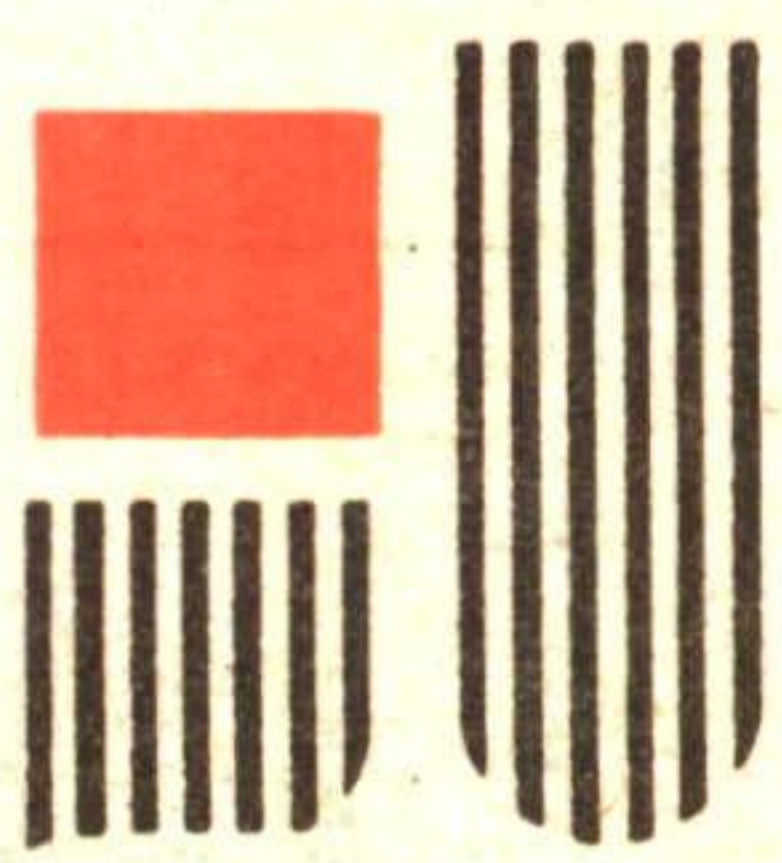


ROYAL LEPAGE



170 GUELPH STREET
GEORGETOWN
Toronto Line 846-2005
Out-of-Town 1-800-387-2230
877-0173

It's you that counts the most.



Peter Blundell
Associate Broker/
Manager



Maureen Plucinsky
Sales Representative
877-2702



Karen Hall
Sales Representative
(519) 941-4248



Mary Maan
Sales Representative
456-0509



Martha Summers
Sales Representative
873-0655



Richard Judd
Sales Representative
(519) 833-2576



Felix Kurschner
Sales Representative
873-2778



Carole Macleod
Sales Representative
877-9515



Tillie Harvey
Sales Representative
877-9550



Marilyn Champ
Sales Representative
877-9625



Anne Lich
Sales Representative
(519) 855-4732



Dean Jackson
Sales Representative
877-9192



Reg Cooper
Sales Representative
877-9458



Shelia Hum
Sales Representative
877-3478



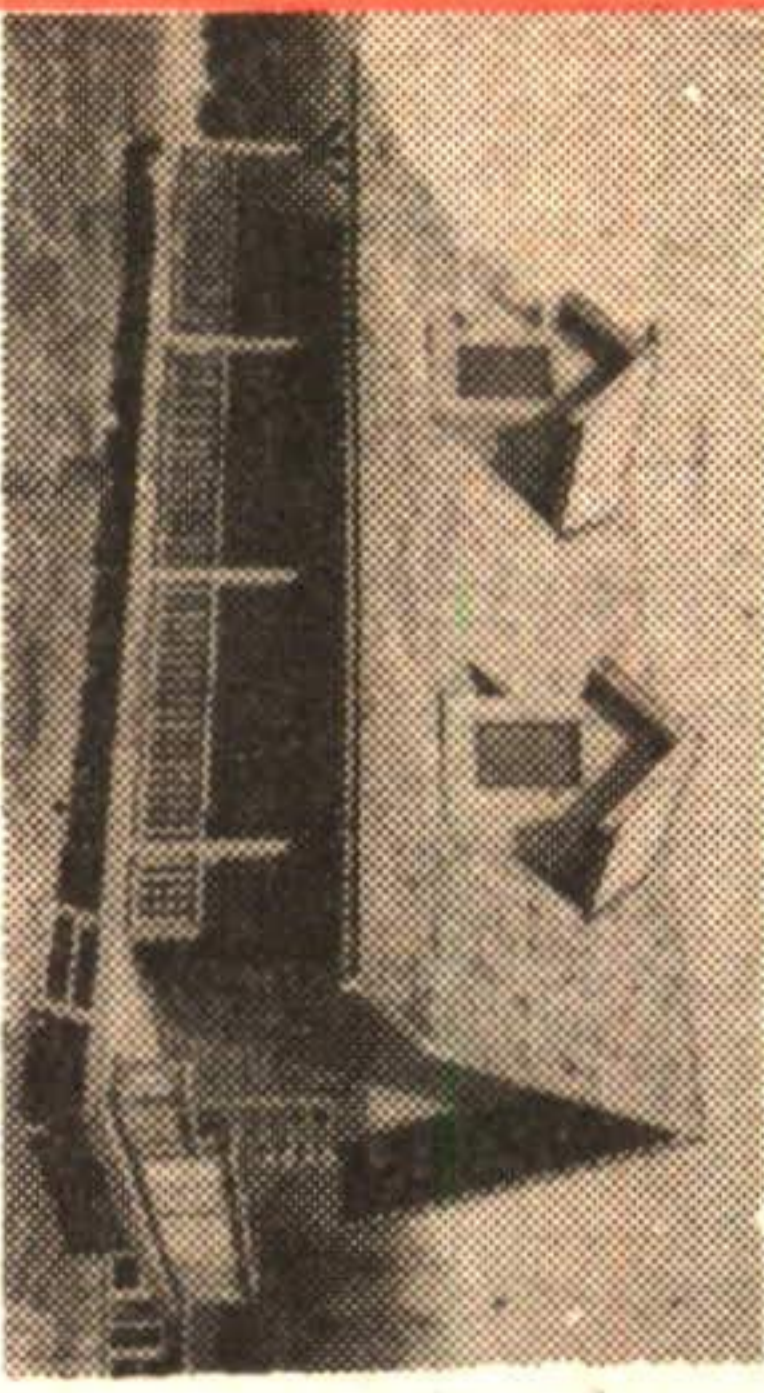
Bertha Moran
Sales Representative
877-6345



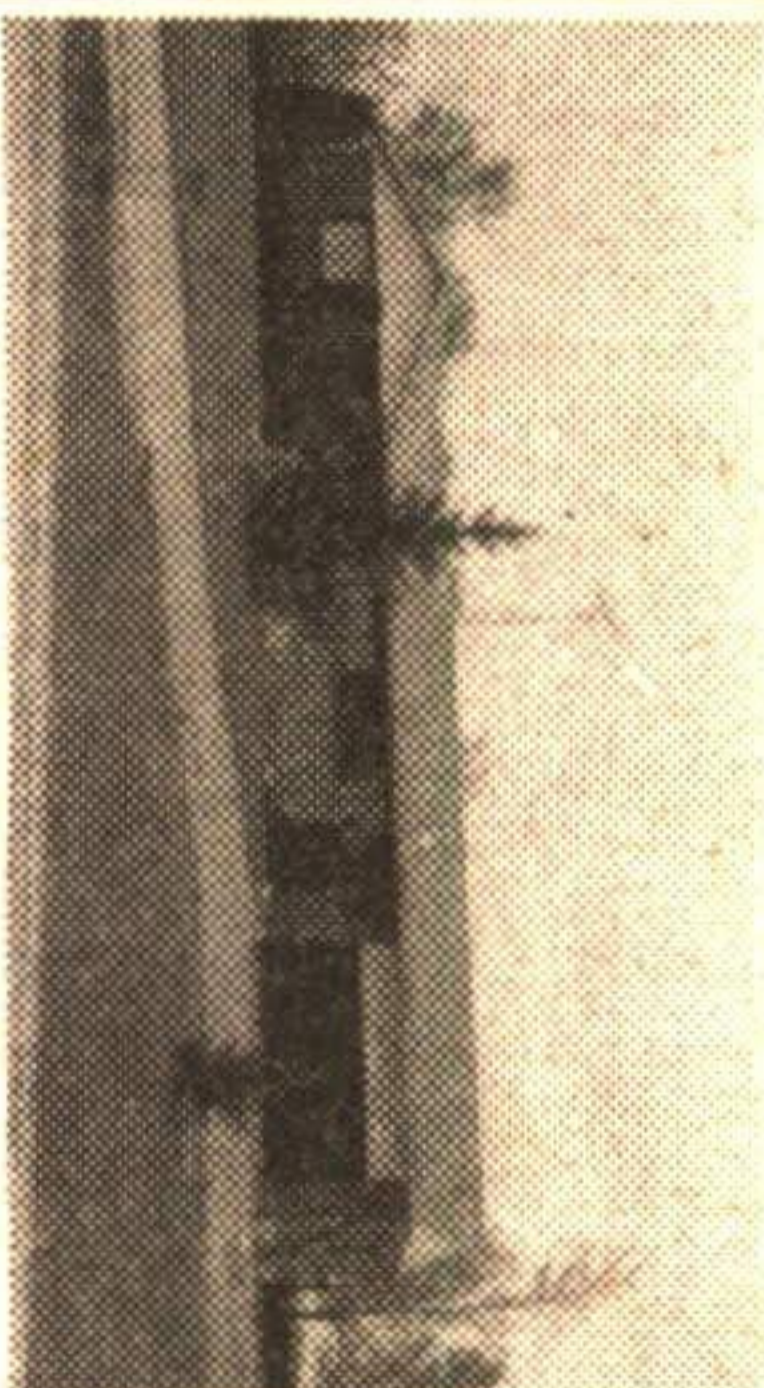
Brian Robinson
Sales Representative
877-5081



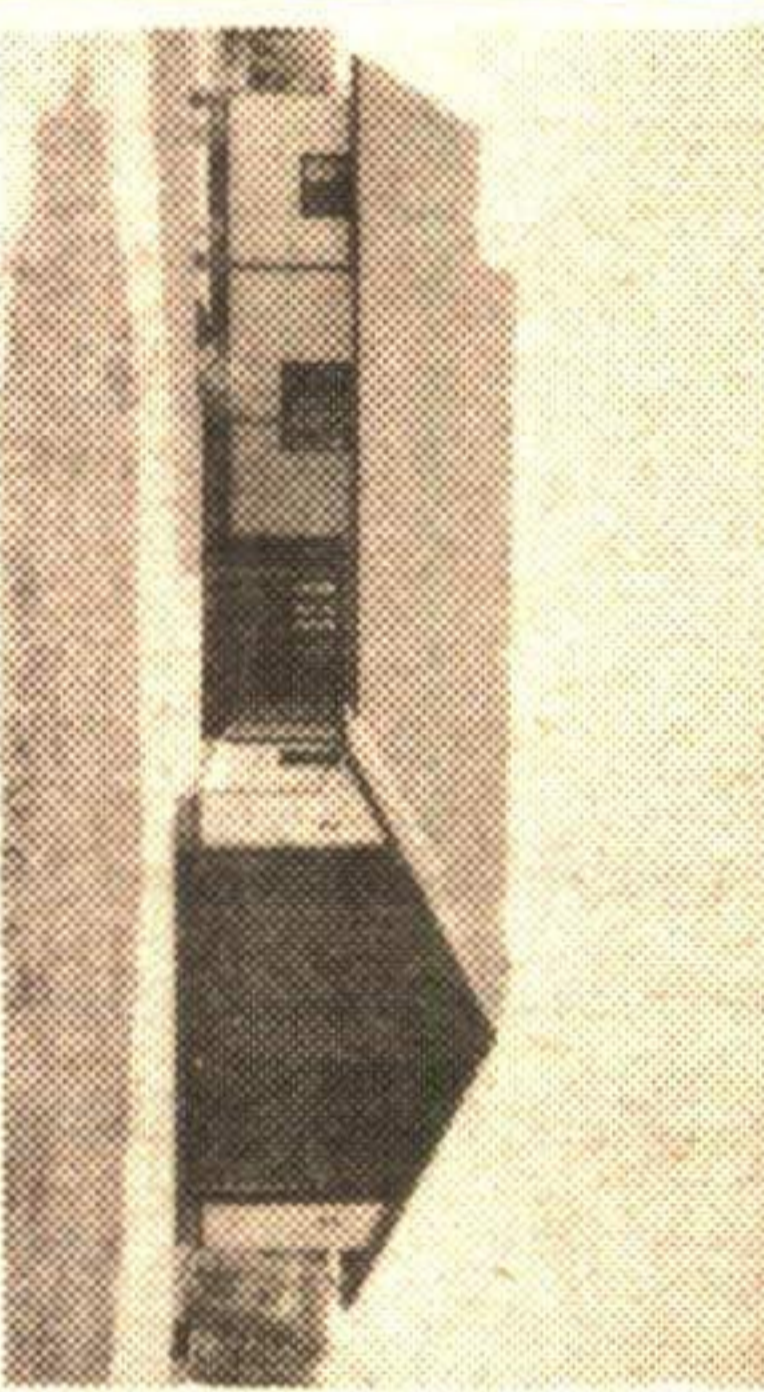
Betty Mckend
Sales Representative
(519) 856-2170



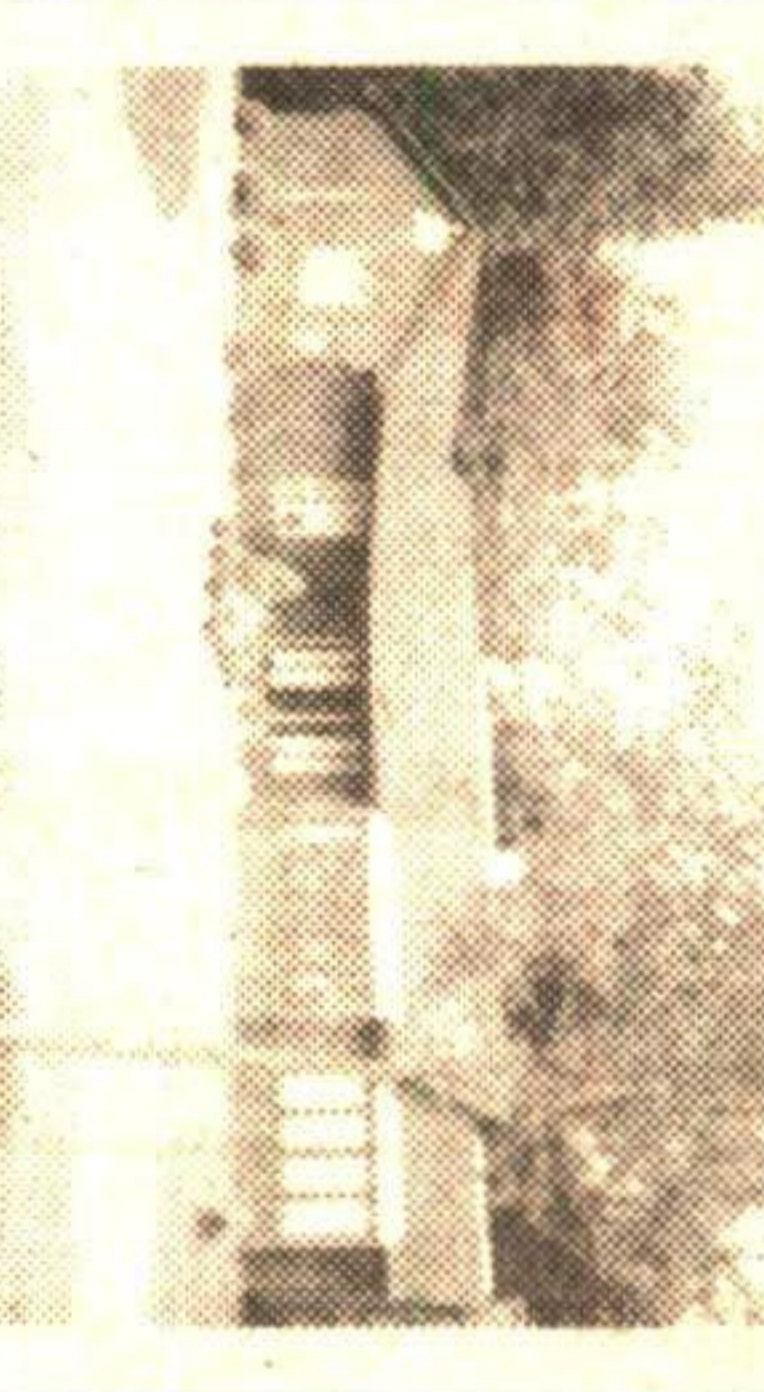
A NATURAL BEAUTY!
Hand peeled Northern White Cedar logs are enhanced by a cedar shake roof on this charming home on 2 scenic acres. Call Anne Lich*.



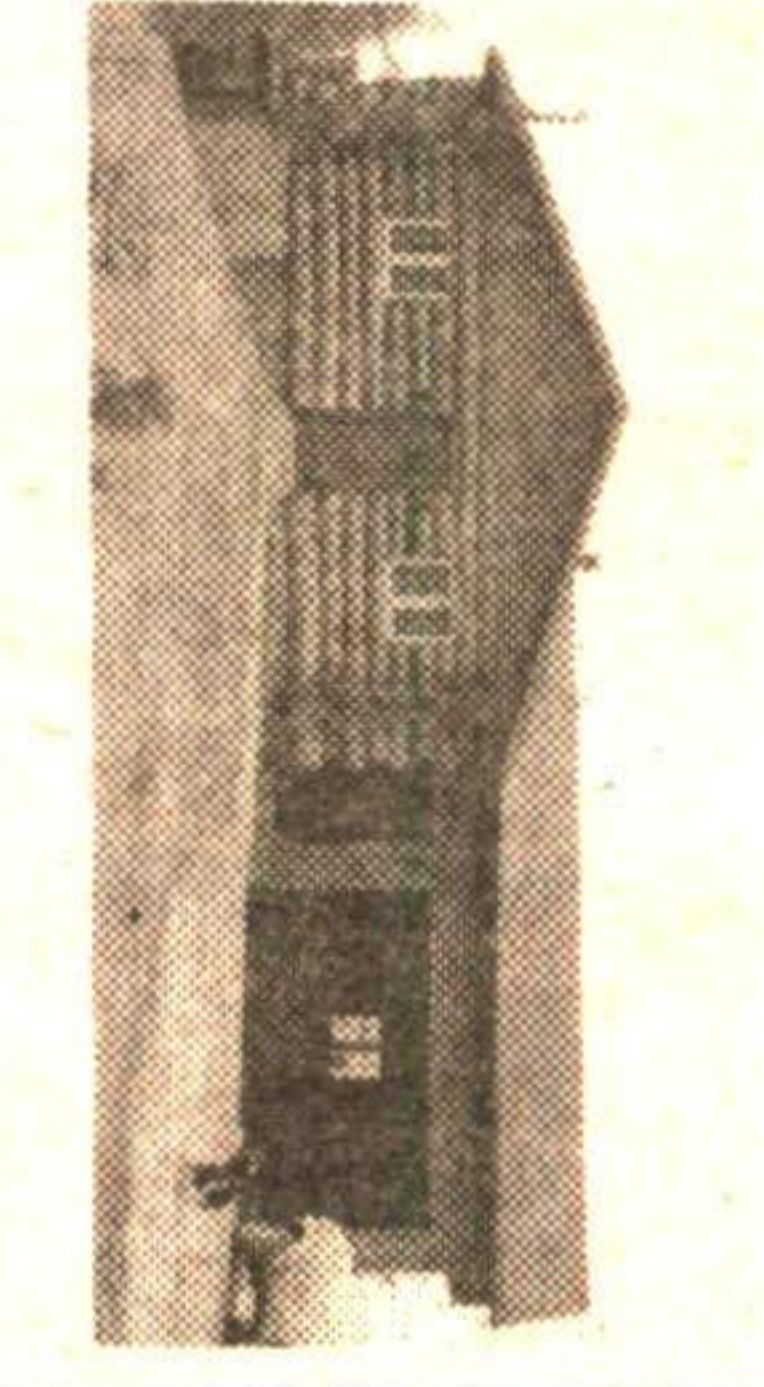
WINSTON CHURCHILL BLVD.
South of town. Ranch bungalow with 4 bdrms, family room, 2 baths, huge lot. 1700 sq. ft. outbuilding. \$429,000. Carole Macleod*.



REDUCED TO \$95,000
Brand new bungalow featuring 6 walk-outs overlooking 20 scenic acres. Ceramic tile, pine kitchen & huge rec room with fireplace. Anne Lich*.



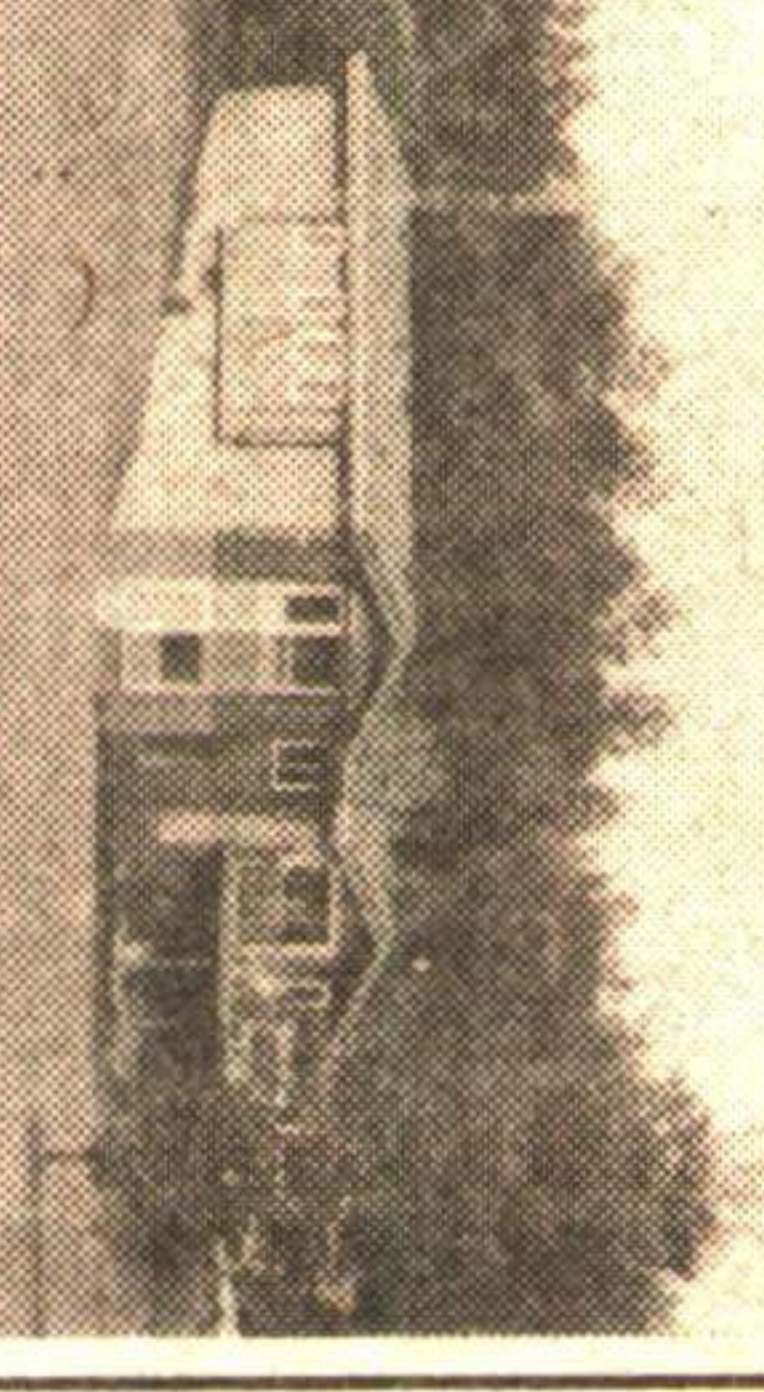
FABULOUS CONTEMPORARY HOME
Located on 2 acres with pond. Featuring European-style kit., cathedral ceilings, stone FP - \$374,900. Martha Summers*.



RUSTIC COUNTRY LIVING!
55 acres of bush & pasture, a delightful pine log home, 8 stall barn & 1/2 mile track are ready for you. \$589,000. Richard Judd*.



NEW LISTING \$221,000
Large 4 bedroom home - bright & airy. Great cres. location. Walkout from kitchen & dining room to huge deck. Mary Maan*.



TERRA COTTA \$439,000!!
9 acres - lovely log home with w/o basement, spring-fed pond. Adjacent 18 acres vacant land available at \$275,000. Martha Summers*.



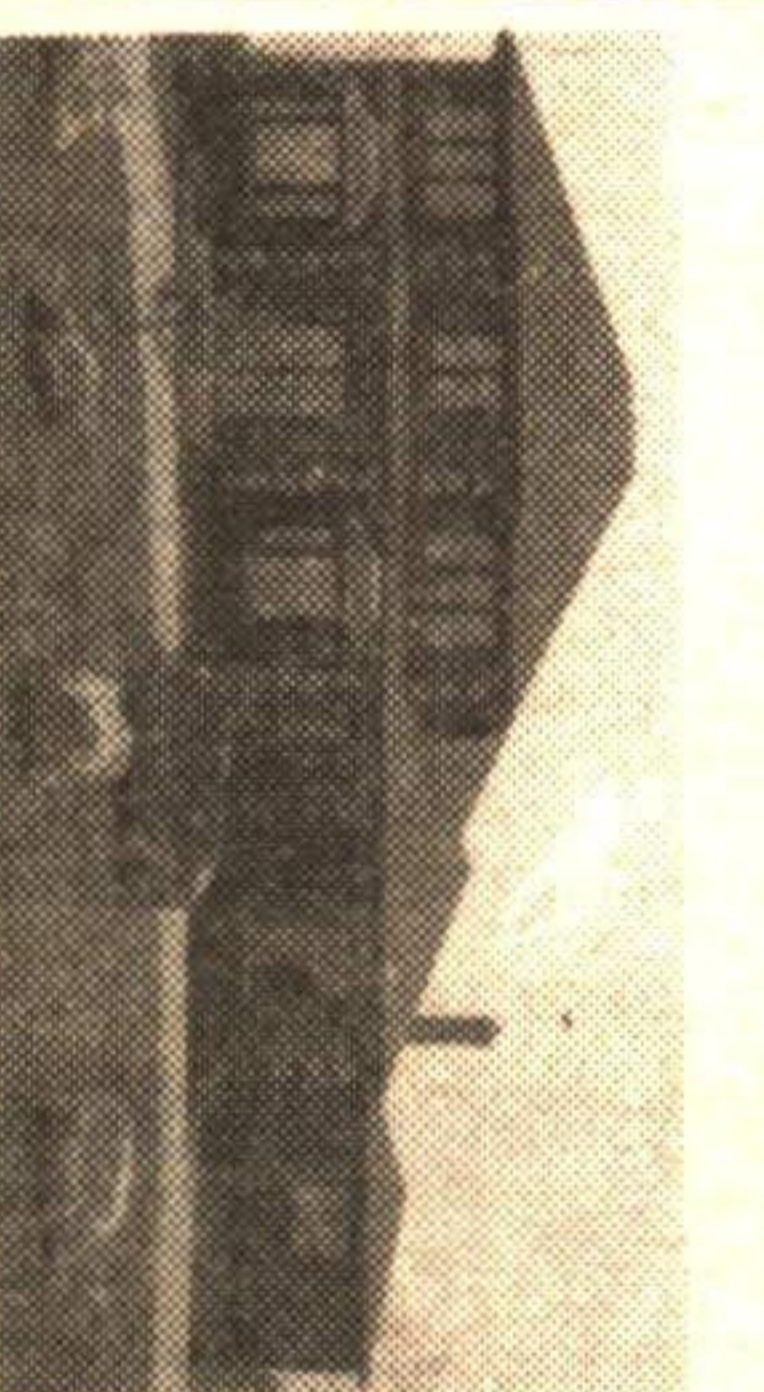
"THE OLD HUXLEY HOUSE" ON "HURRICANE HILL."
\$350,000. Exquisite Victorian home ardously restored. Orig. summer kit. now a charming fam. rm. Anne Lich*.



GREAT COURT LOCATION
6 years new bungalow backing onto park, close to schools & shops. Fully finished basement with walkout, professional landscaping. Mary Maan*.



PARK DISTRICT \$225,000
Beautiful brick & stone bungalow - pride of ownership shows - mature treed lot, landscaped & fenced. Inground pool. Mary Maan*.



REDUCED TO \$498,000
Grand foyer leads to formal liv & din rms. Florida room, huge kit., office, fam. rm with FP. Inground pool & 4 car garage. Anne Lich*.



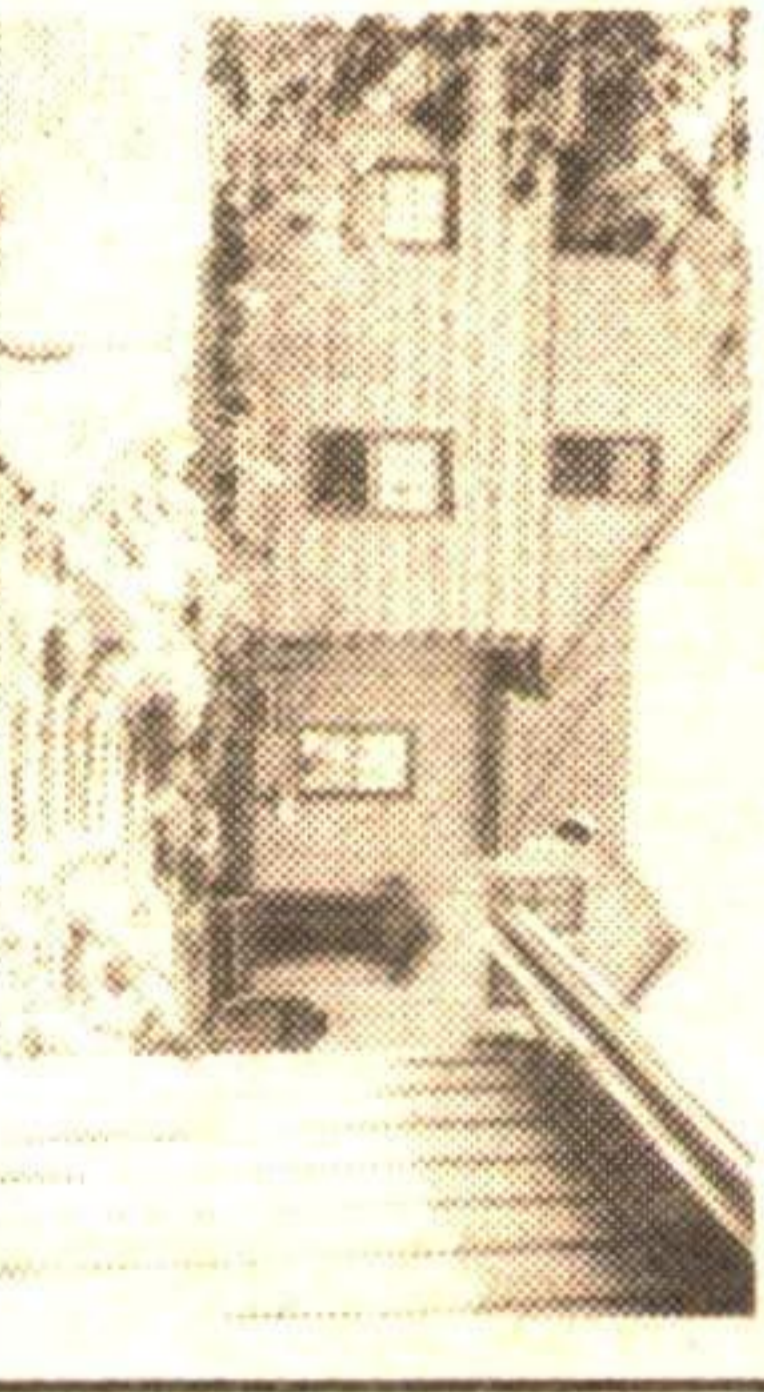
GRAB YOUR KEYS
And drive to beautiful Terra Cotta to view this lovely 4 pillar 4 bedroom home on 1/2 acre. Well treed lot - \$279,900. Bertha Moran*.



THOROUGHbred HORSE FARM
Horton Hills, 147 acres, century home, barn, stables, 60 x 160 ft. arena, ponds, 45 acres hardwood. \$14,000 per acre. VTB. Maureen Plucinsky*.



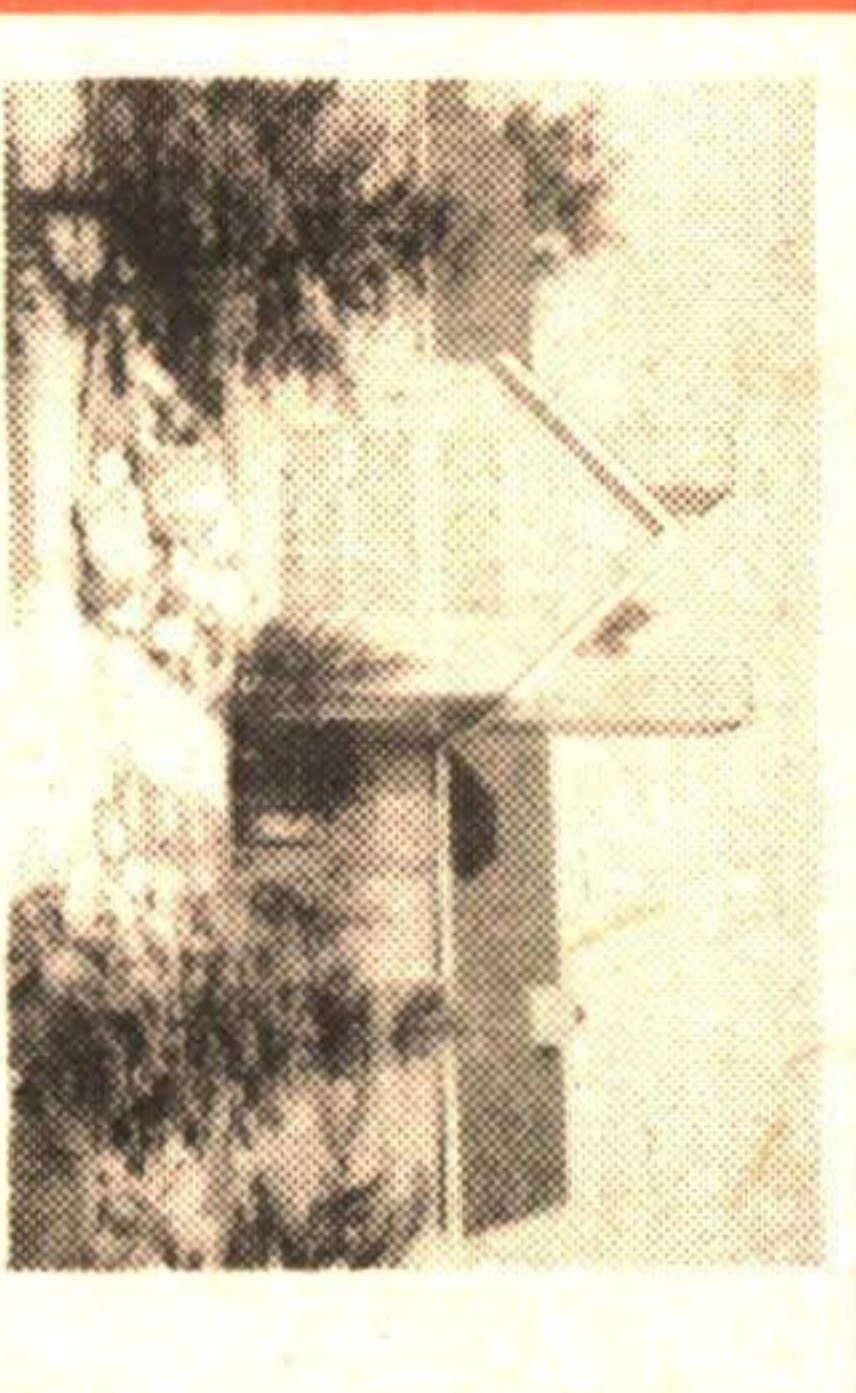
CLOSE TO SCENIC ERIN MILLS
Sprawling 110 acre farm. Beautiful rolling land with Eramosa River running through. Cozy bungalow & excellent barn. Anne Lich*.



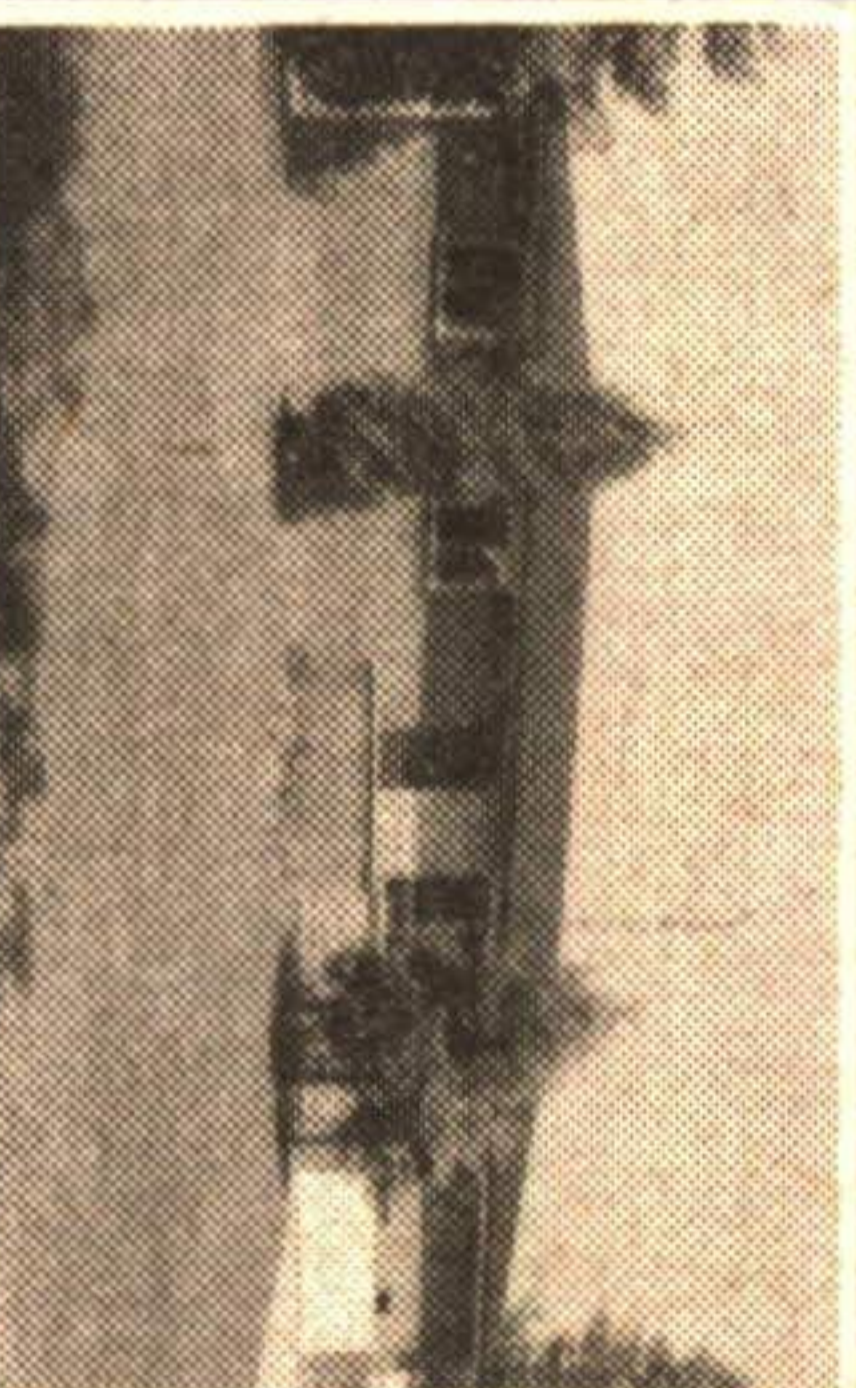
TIME STANDS STILL!!
The period details of this historic homestead become apparent on close inspection. See for yourself!! 26 acres. Anne Lich*.



GO FOR IT! YOU'LL WIN!
Pretty home - neutral decor! Attractive garden. Privacy deck. New competitive price with extra values. \$234,900. 3 bdrms. Betty Mckend*.



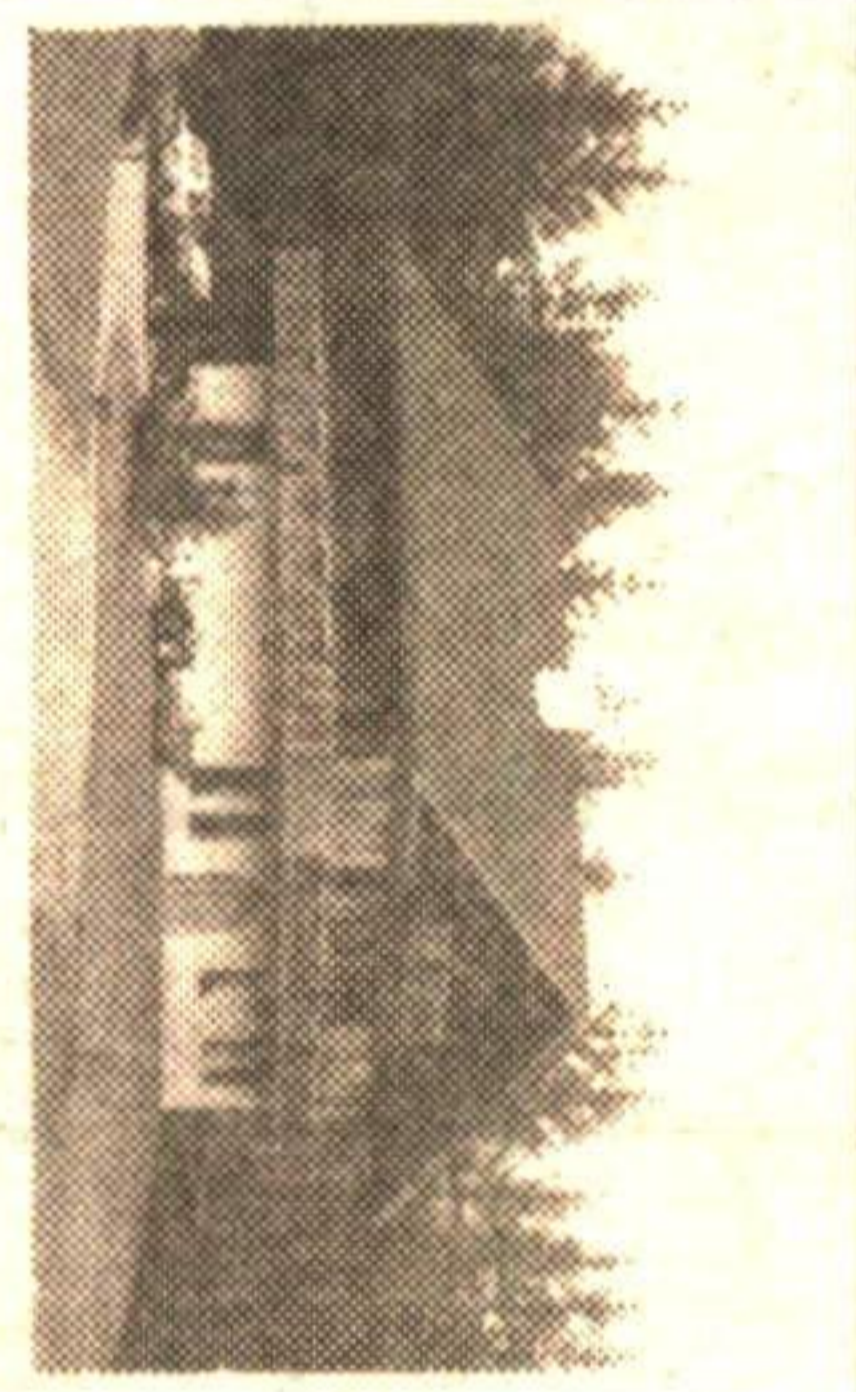
79 ACRE ESTATE - MILTON
\$1,200,000 private drive thru acres of hardwood bush leads to a huge contemporary home set impressively on a stone ridge. Anne Lich*.



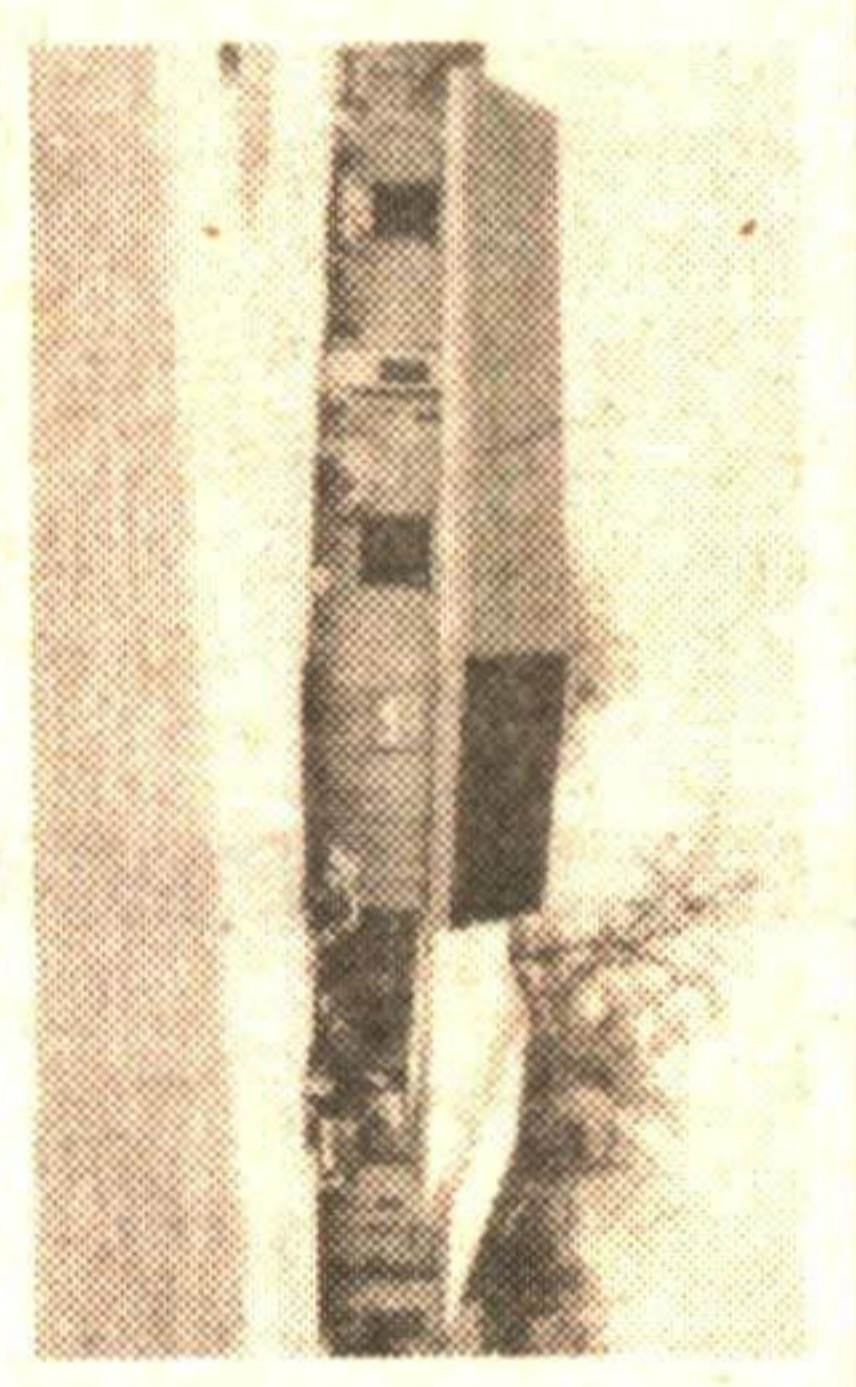
10.4 ACRES HALTON HILLS
8 miles to 401, 3 bdrms, ensuite, eat-in kit + DR, FP, patio, garden, C.A.C., ample parking. Severance granted subject to cond. M. Plucinsky*.



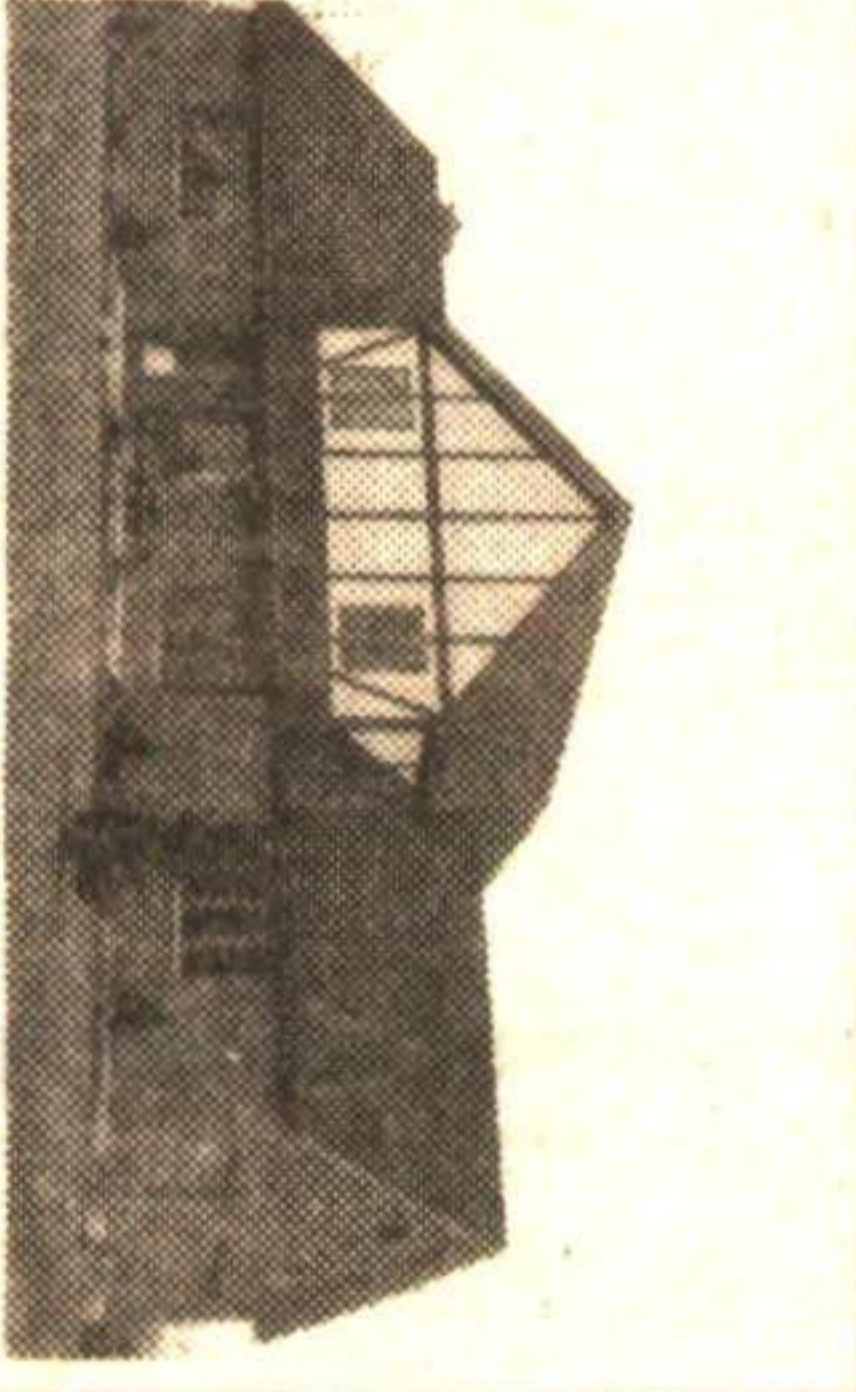
TOWN & COUNTRY \$359,000
Country rancher, mbr with ensuite & deck. Party room, stone FP, in-law suite, lovely 3-3/4 acre property. Tillie Harvey*.



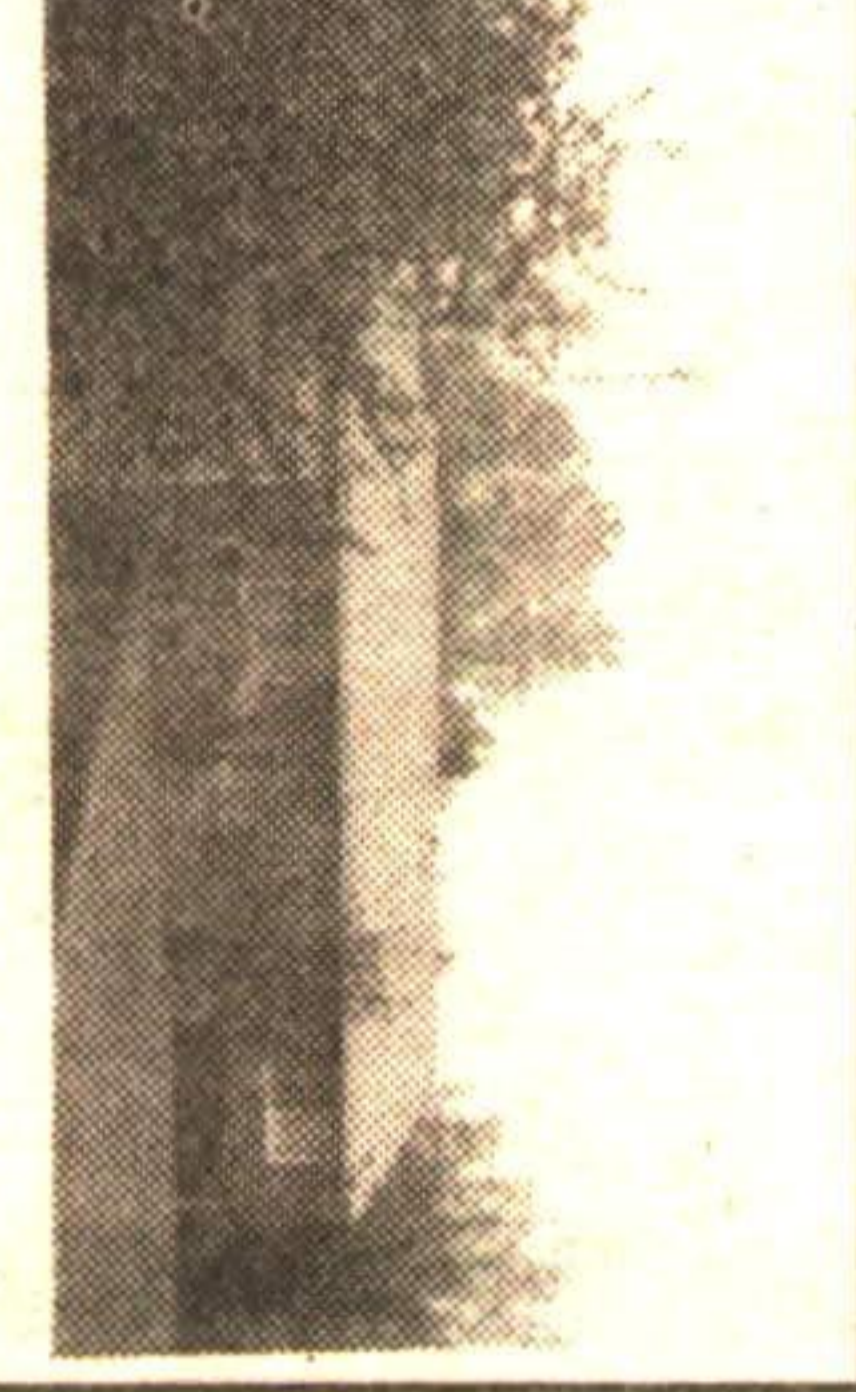
FABULOUS WEEKENDER!
Only 1 hour from Toronto. 5 bedroom Alpine Chateau on 5 acres. Close to Cedar Ski Club/Millcroft Inn. \$675,000. Richard Judd*.



"BUSY HIGHWAY EXPOSURE"
2 offices, open show space - reception area, days to rent, close to Guelph on Hwy. #6. Lots of parking - landscaped. Call Karen Hall*.



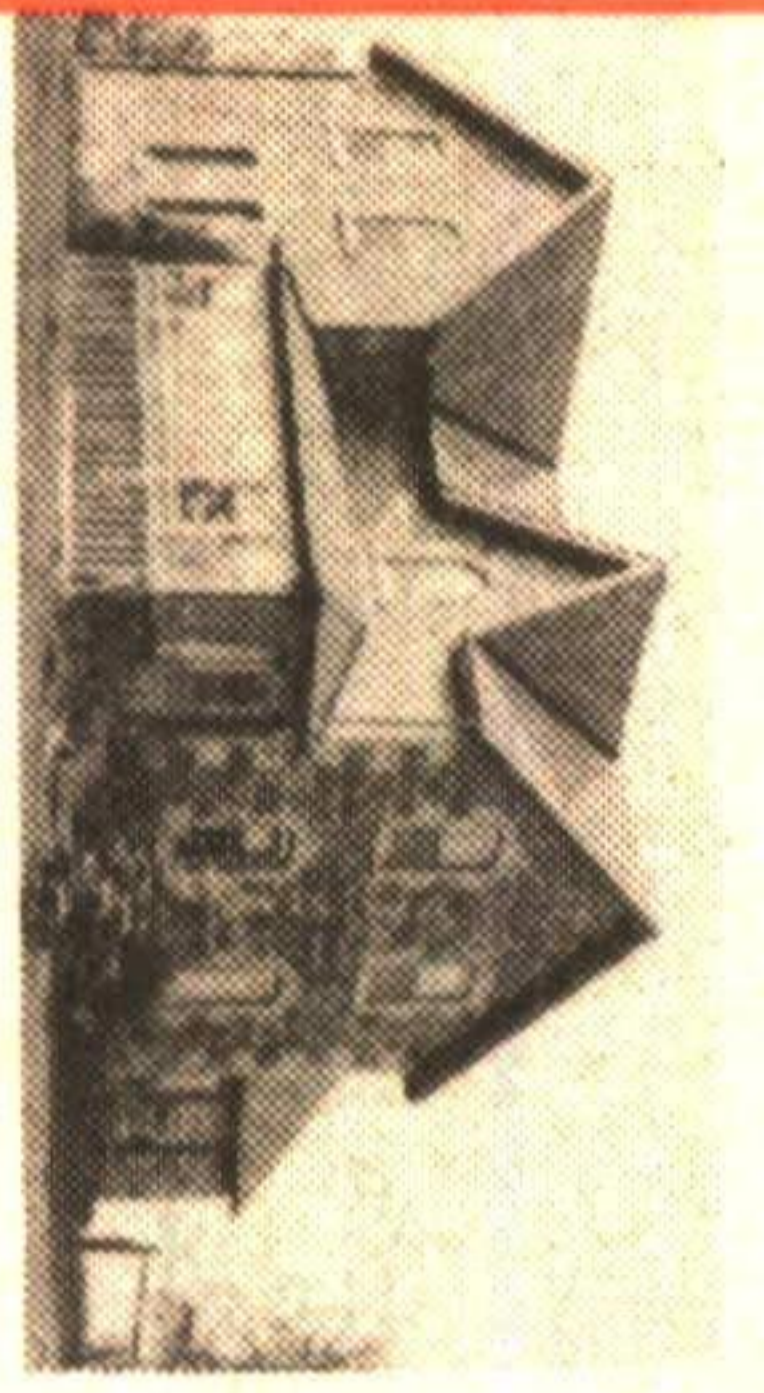
WHEN YOU'RE ONLY BUYING ONE!
Quality counts! This beautiful home offers many fine features + 5 gorgeous acres, with stream and bush. \$419,000. Tillie Harvey*.



ENTICING ECONOMY LIVING!
This gleaming 3 bedroom bungalow is just outside Erin on 1.5 acres. Just move in and enjoy all the extras. \$235,000. Richard Judd*.



COMMUTE TO MISSISSAUGA
Only 25 mins. from Mississauga Rd./401 to paradise! 4 bdrm executive bungalow on 27 acres of red pine. \$579,000. Richard Judd*.



CENTURY STONE FARMHOUSE
\$269,000. Beautifully restored 5 bdrm home with orig. flrs & trim. Huge new country size kit. inc. driveway & pastoral views. Anne Lich*.



LARGE WELL TREED LOT
Bright modern upgraded kitchen, large pine rec rm, 2 bathrooms, extra bdrm in basement. Now only \$189,000. Marilyn Champ*.



BUSINESS IN YOUR HOME??
Excellent location - 3 bdrm brick bungalow with large corner lot. Vendor currently operating a successful hair salon. \$204,600. Carole Macleod*.



SATURDAY AUGUST 4TH, 1-4 PM OPEN HOUSE
Trafalgar Rd. N. to 22nd Sideroad. Hills-burgh. Follow the signs to this spacious family home on 9 acres - \$399,000. Dean Jackson* will see you here. 15-18



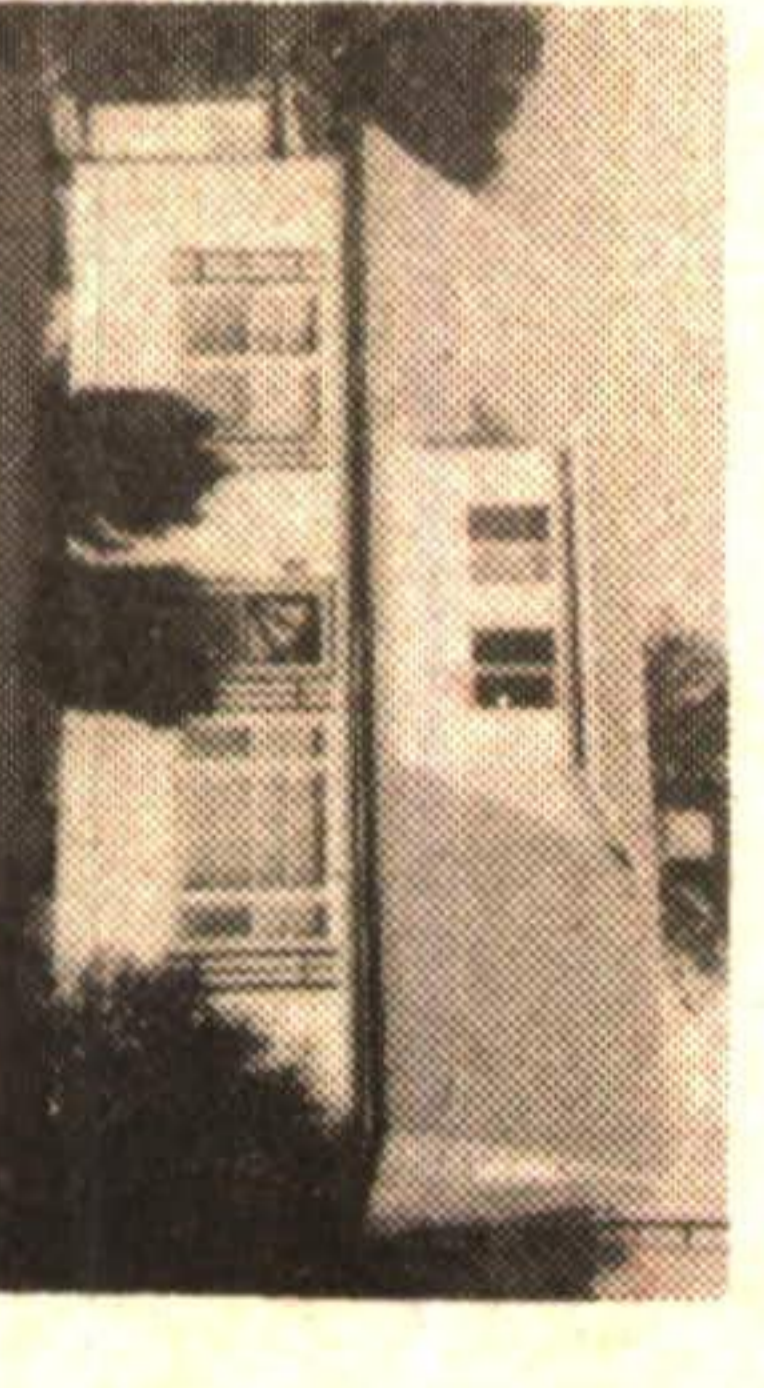
A CHARMER IN THE PARK AREA
Only \$219,000 for this one-of-a-kind home with formal dining rm, separate breakfast room off kitchen & much more. Call Marilyn Champ*.



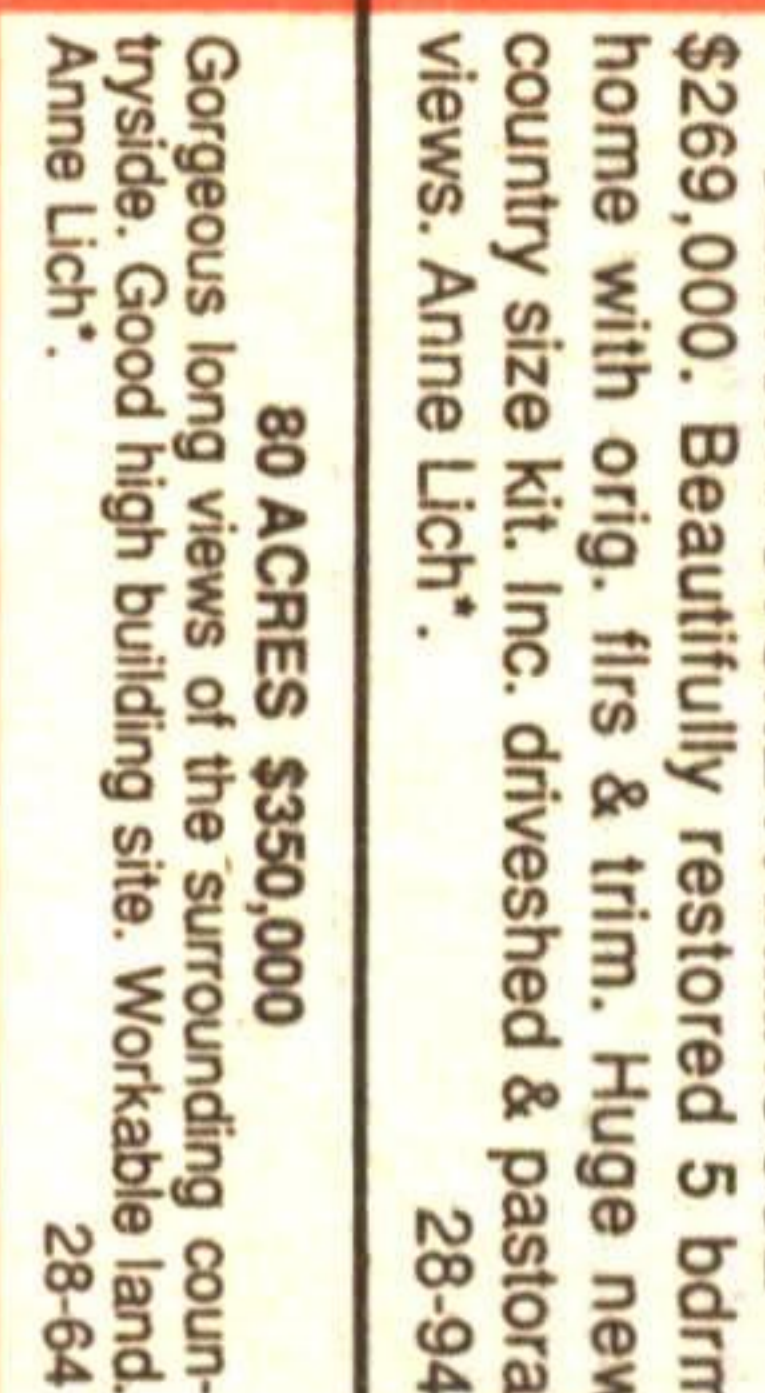
AN OLD FASHIONED SETTING
\$299,000 - mature spruce create complete privacy. Turn of the century brick home. Orig. pine flrs, 4 bdrms, barn, paddocks. Call Anne Lich*.



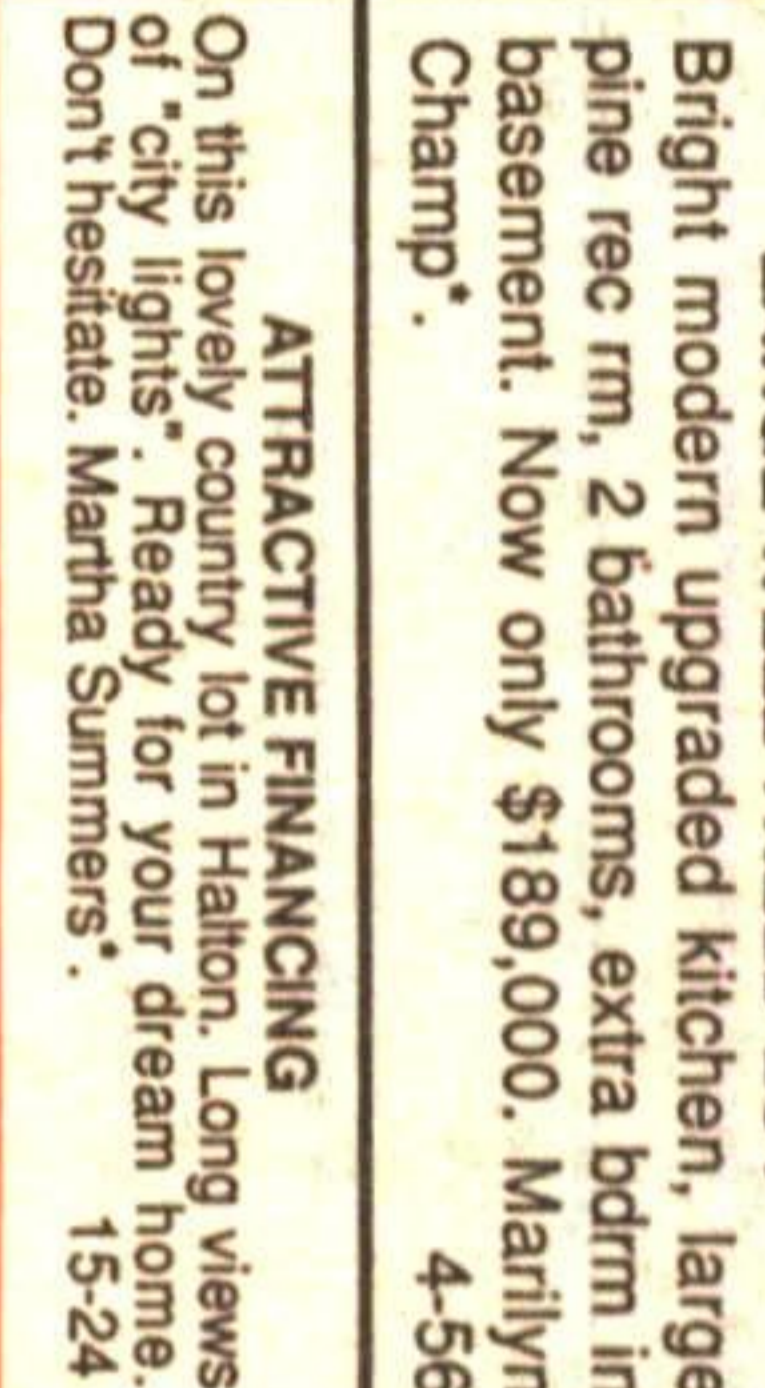
VILLAGE CHARM \$224,900
4 bdrms recently renovated kit & family rm, private yard backing onto nursery land, separate living & dining rooms. Martha Summers*.



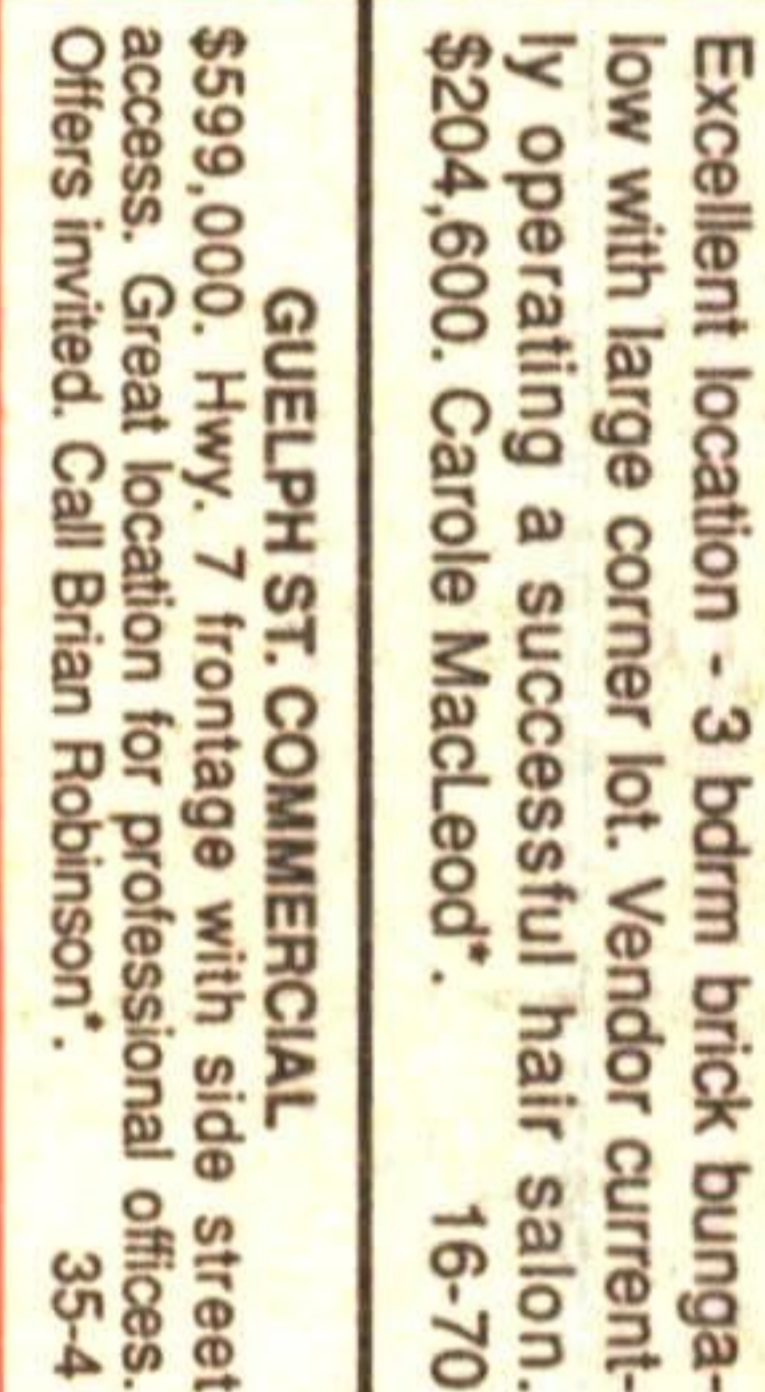
INVESTMENT STARTER HOME
3 bdrms on 1/3 acre make this a great starter with development potential later. A "best buy" at \$162,000. Call Richard Judd*.



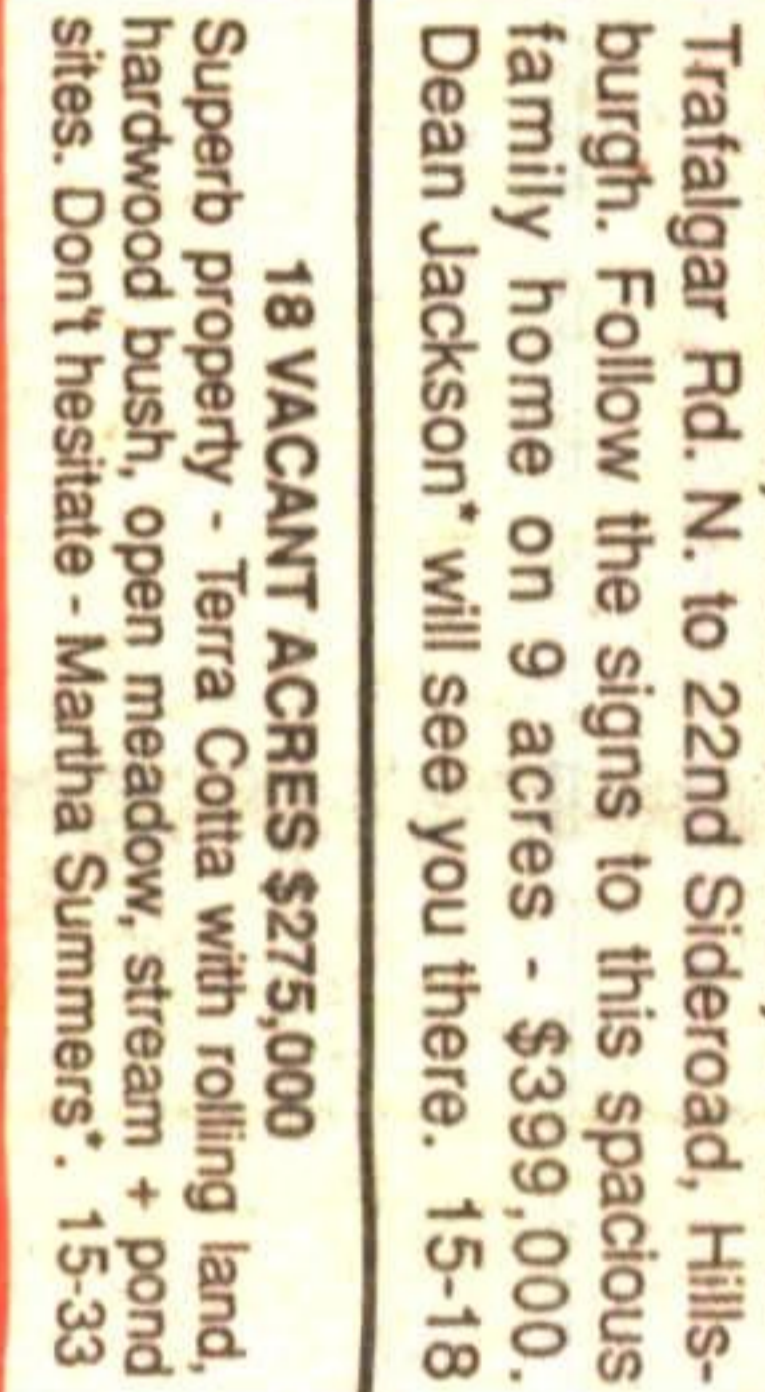
80 ACRES \$390,000
Gorgeous long views of the surrounding countryside. Good high building site. Workable land. Anne Lich*.



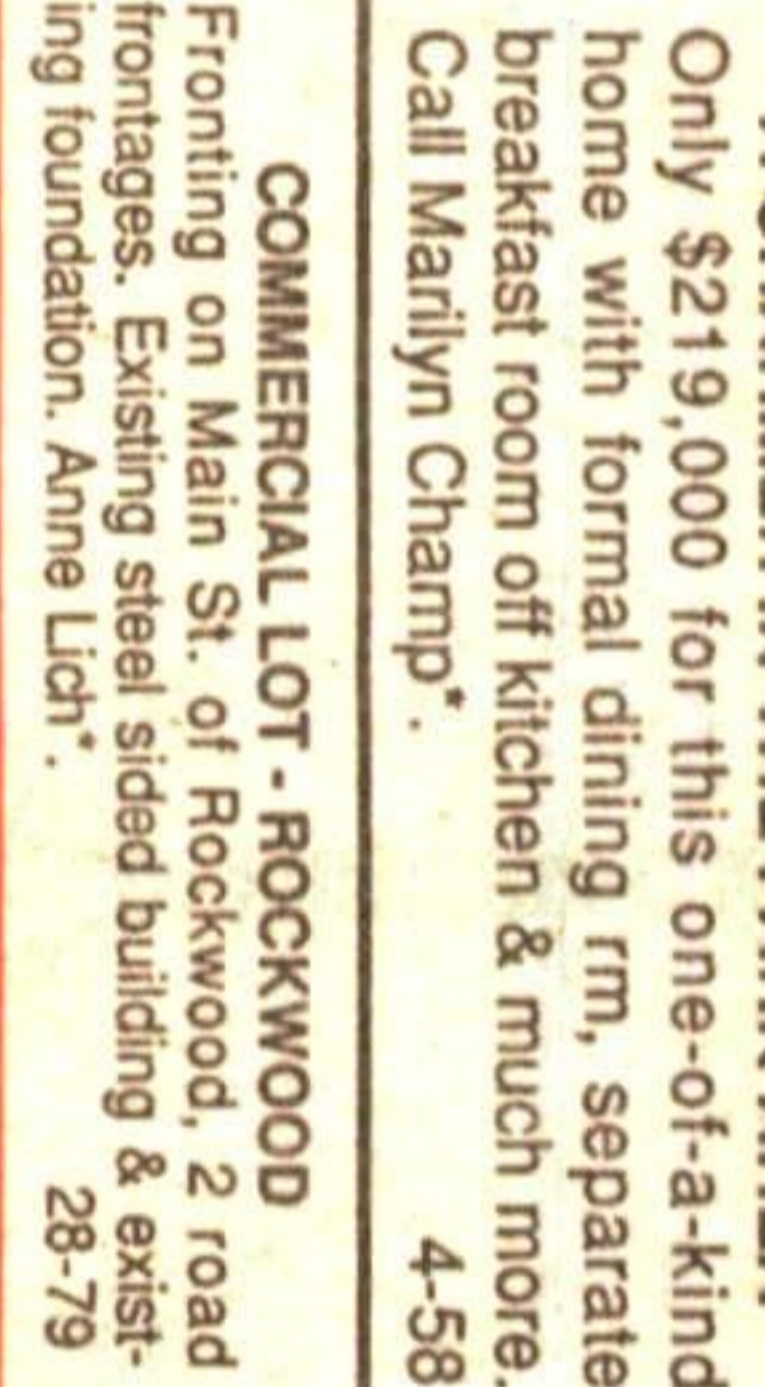
ATTRACTIVE FINANCING
On this lovely country lot in Halton. Long views of city lights. Headed for your dream home. Don't hesitate. Martha Summers*.



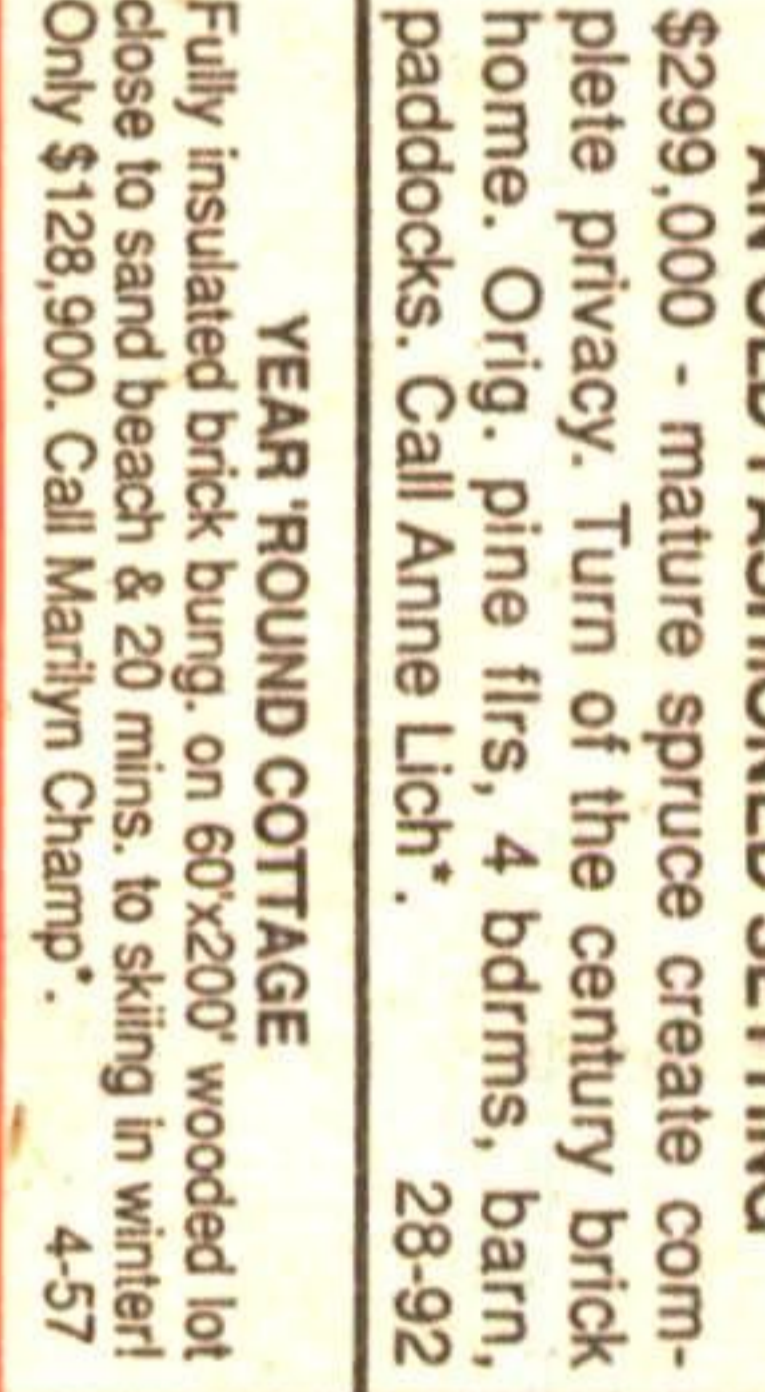
GUELPH ST. COMMERCIAL
\$599,000. Hwy. 7 frontage with side street access. Great location for professional offices. Others invited. Call Brian Robinson*.



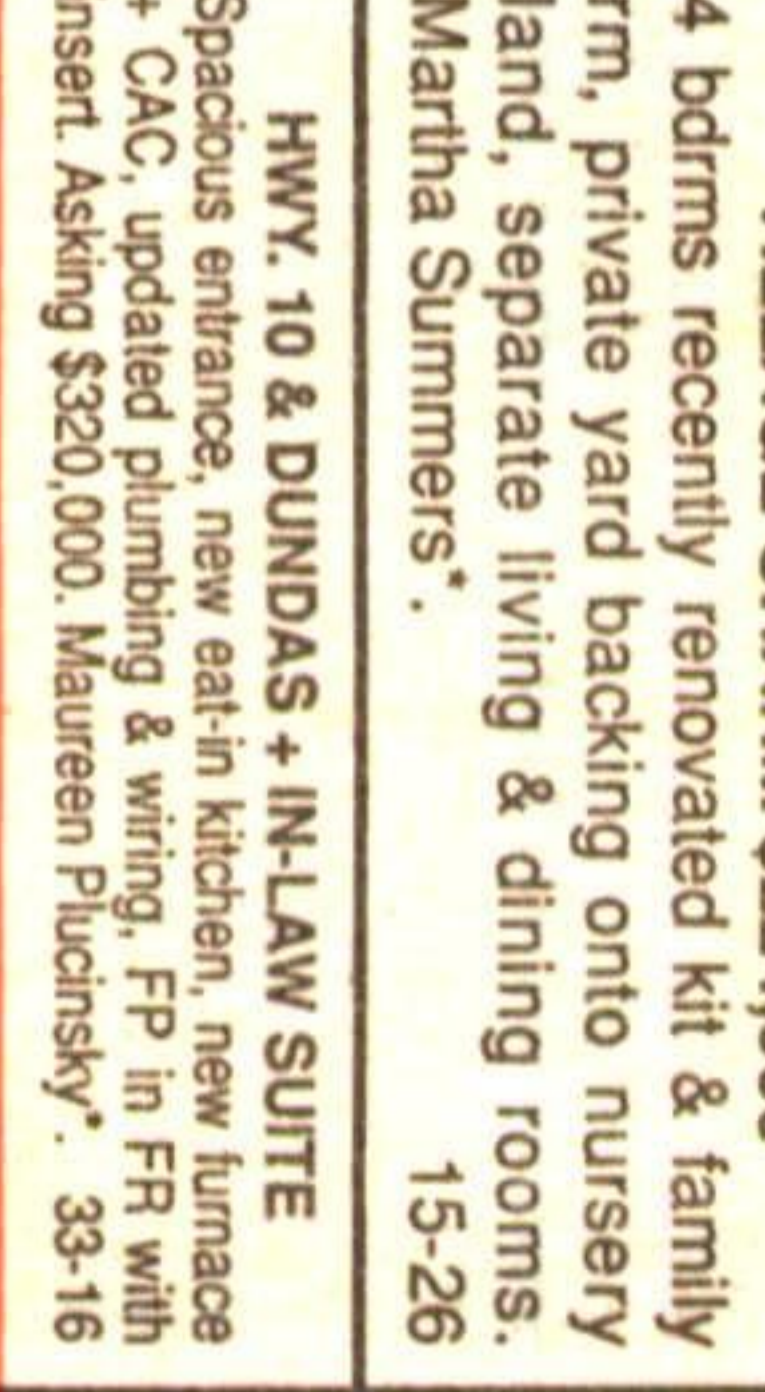
18 VACANT ACRES \$275,000
Superb property - Terra Cotta with rolling land, hardwood bush, open meadow, stream + pond sites. Don't hesitate - Martha Summers*.



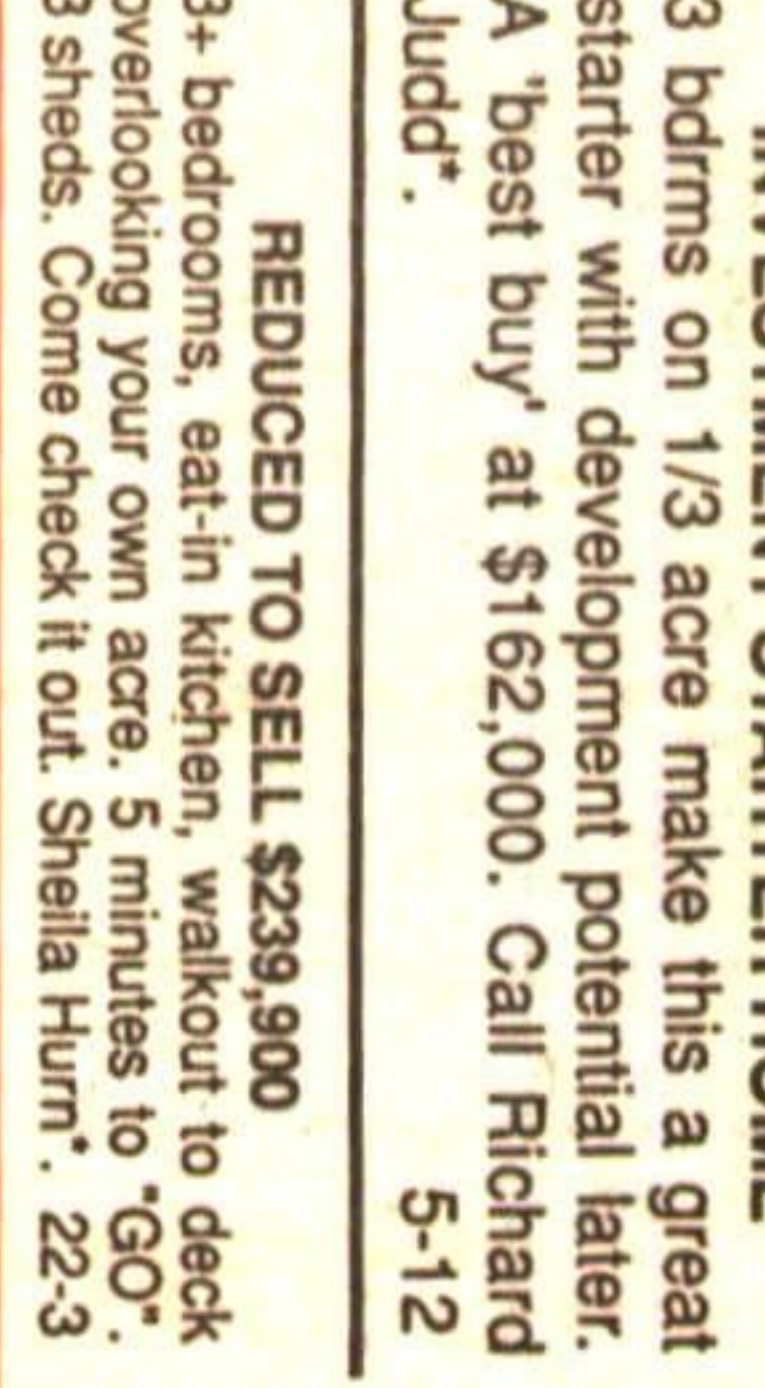
COMMERCIAL LOT - ROCKWOOD
Fronting on Main St. of Rockwood, 2 road frontages. Existing steel sided building & existing foundation. Anne Lich*.



YEAR ROUND COTTAGE
Fully insulated brick bungalow on 60x200 wooded lot close to sand beach & 20 mins. to skiing in winter! Only \$129,900. Call Marilyn Champ*.



HWY. 10 & DUNDAS + IN-LAW SUITE
Spacious entrance, new eat-in kitchen, new furnace + CAC, updated plumbing & wiring. FP in FR with insert. Asking \$320,000. Maureen Plucinsky*.



REDUCED TO SELL \$239,900
3+ bdrms, eat-in kitchen, walkout to deck overlooking your own acre. 5 minutes to "GO". 3 sheds. Come check it out. Shelia Hum*.