

1990 HONDAS
ARE HERE



THE ALL NEW ACCORD
GEORGETOWN HONDA
203 GUELPH ST. (Hwy. #7)
873-1818

VOLUME 6 -- NO.30

HALTON HILLS

Marketplace

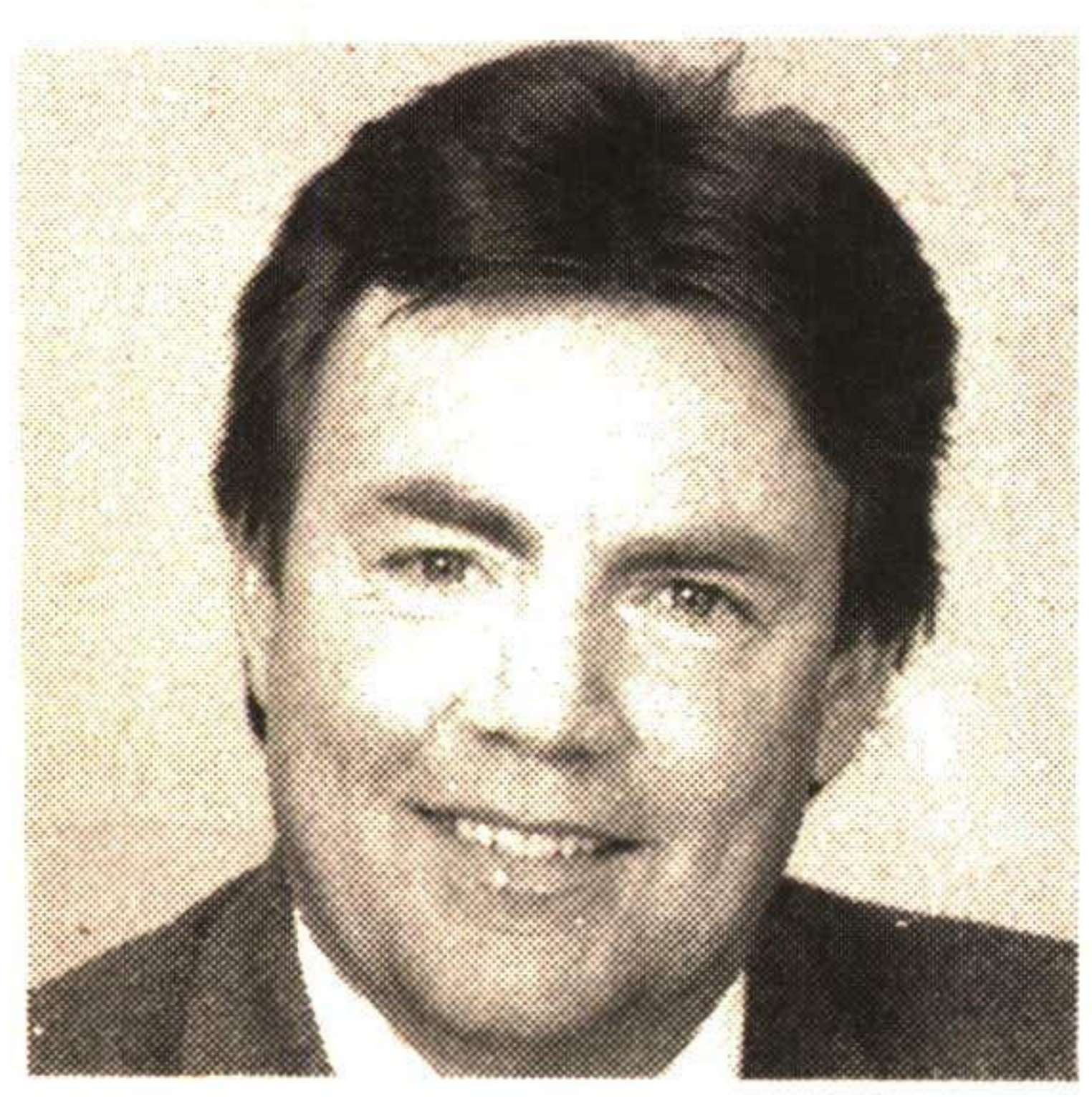
Your weekly guide to Fantastic Bargains, Specials,
Real Estate and Classified Listings!

SATURDAY, MAY 5, 1990



360 Guelph St., Georgetown
877-5211

873-0301



BILL McKEOWN
Sales Representative



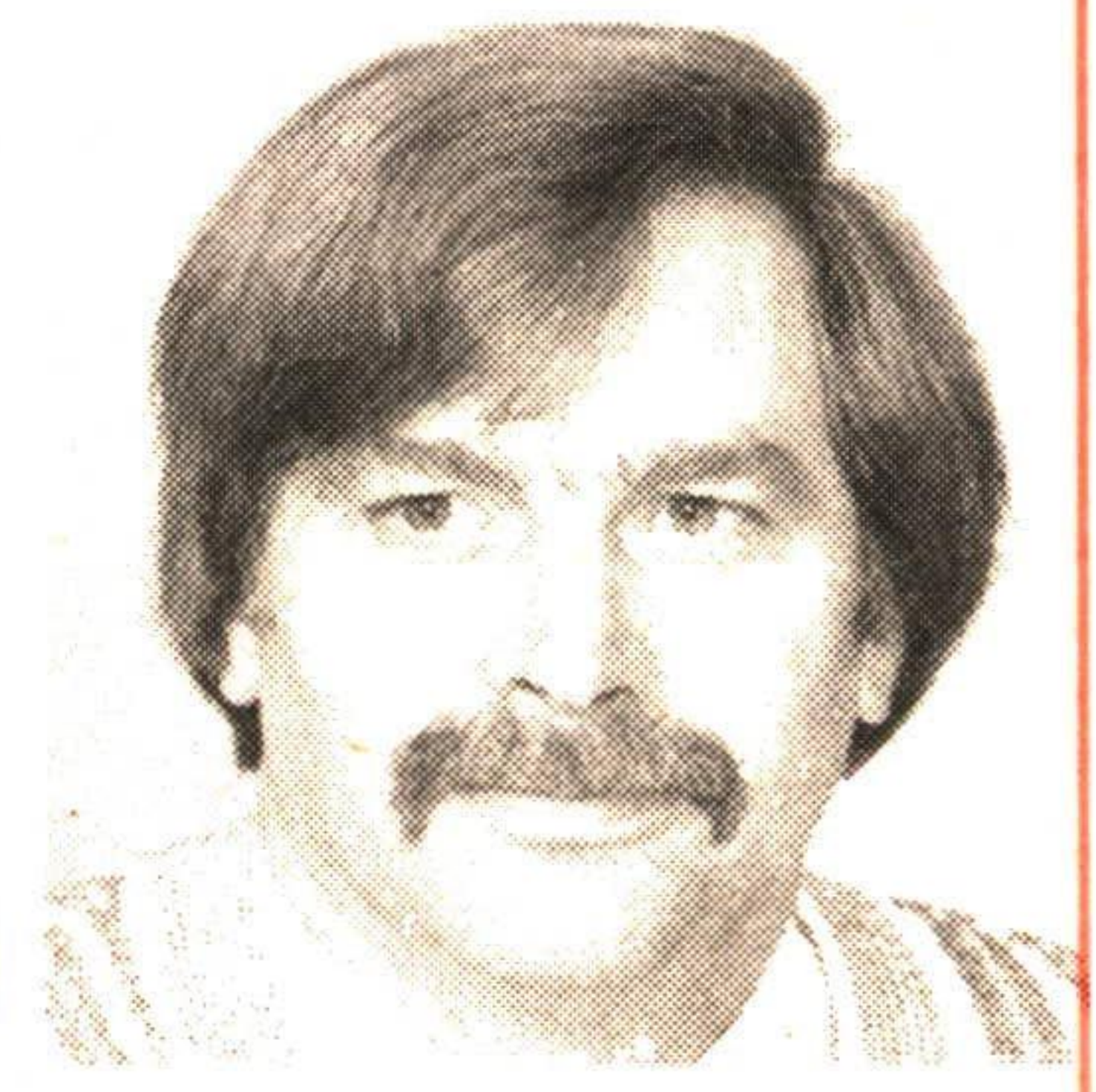
RE/STAR®

the "Choice" in Real Estate™

RE/STAR Marlatt Realty Group Inc. (Realtor)

*Members of Brampton and Toronto Real Estate Boards to better serve your needs.

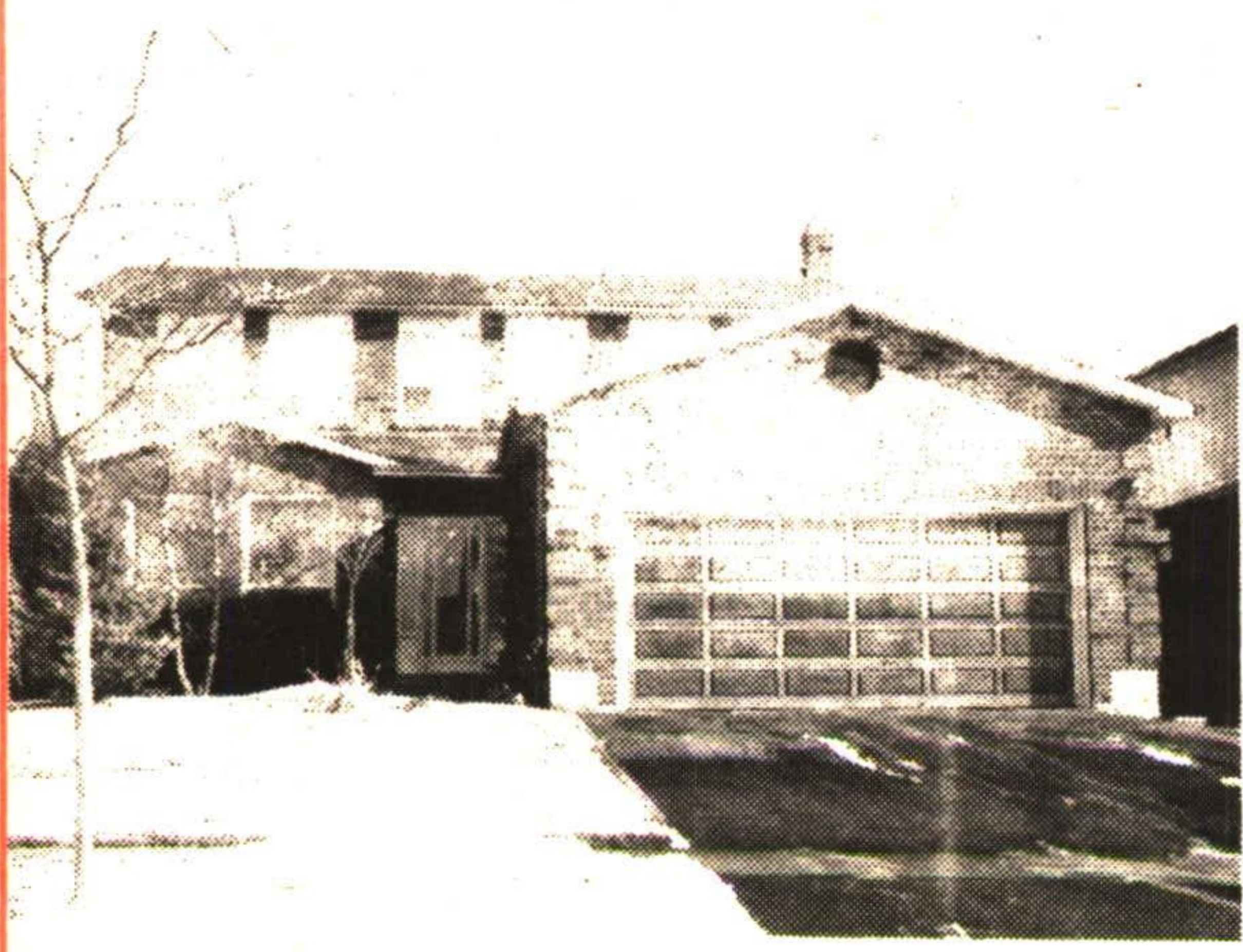
873-2437



ANDY KING
Associate Broker

★ ★ ★ ★ ★ 5 STAR ★ ★ ★ ★ ★

EXECUTIVE LIFESTYLE



This exquisite home boasts 3 bedrooms, greenhouse kitchen, main floor family room and laundry, central air, intercom and much more on a 50 x 265 foot deep lot. Call Bill or Andy for your personal viewing. Offered at \$339,900.

193-89

GAS BAR SITE

North of Georgetown, 216 ft. of frontage, zoning in place, with existing convenience store and residence. Offered at \$485,000.

02-90



2+ ACRES BUILDING LOT WITH POND WAITING FOR YOUR DREAM HOME

Lovely rolling land on paved road close to Belwood. Call for details and an exclusive preview with Bill or Andy. Offered at \$129,900.

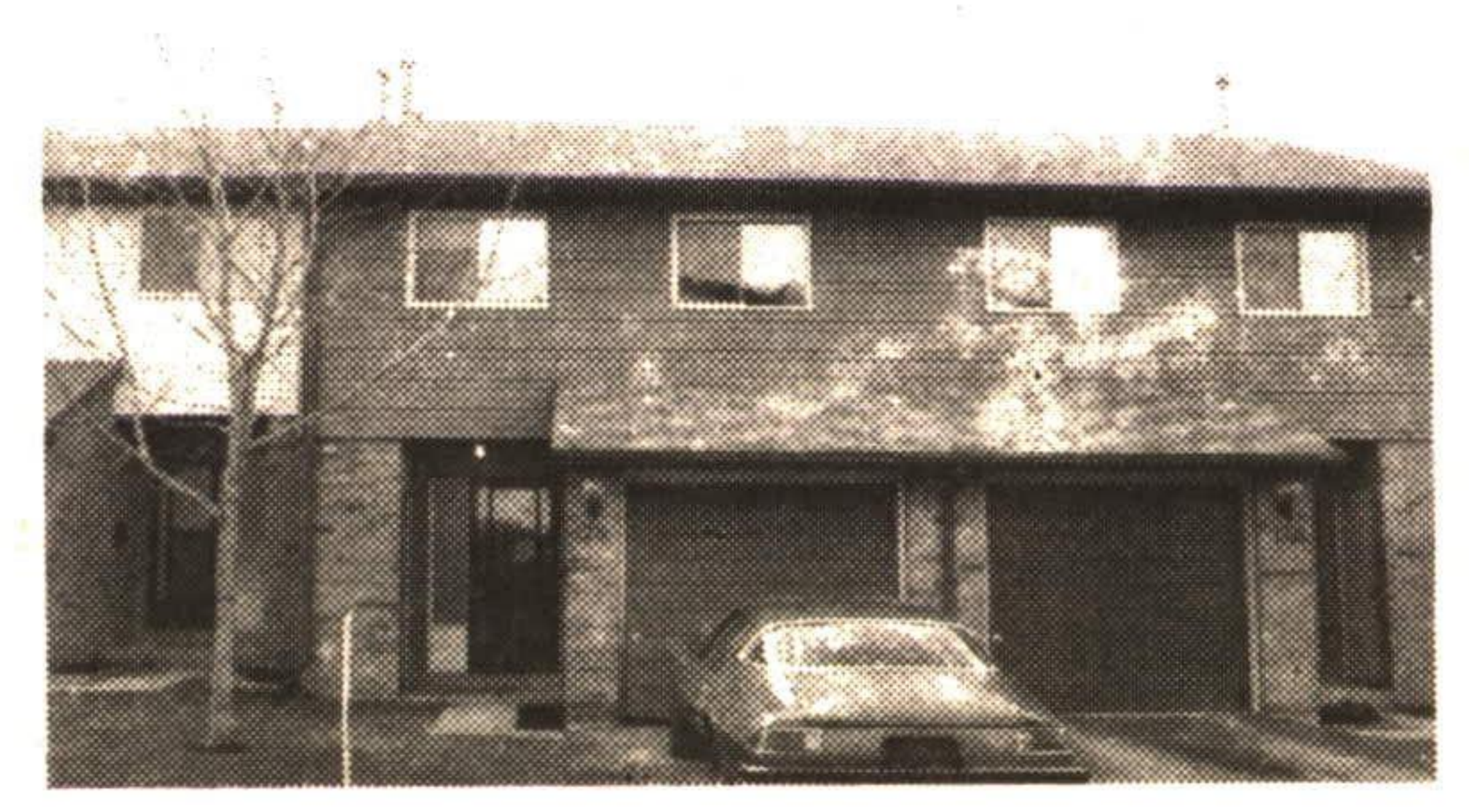
165-89



McLAUGHLIN ROAD 1/2 ACRE

Just 1.1 miles north of Hwy. 7 and close to the industrial area above Brampton. This property boasts a recently renovated 3 bedroom bungalow to make you proud. Call for your viewing with Bill or Andy today. Offered at \$379,900.

1-90



"A" MODEL LYNDEN CIRCLE

Townhouse, eat-in kitchen, 3 bedrooms, walkout to deck from living room, walkout from finished rec. room and more. Offered at \$169,900.

42-90

If you're thinking of selling your home checkout
the "Choice" in Real Estate™



OUR 4 STAR



Program offers an innovative approach to home marketing that could save you thousands!

For More Information Call:

Bill McKeown, Sales Representative, or Andy King, Associate Broker

873-2437

Not intended to solicit homes already listed for sale.