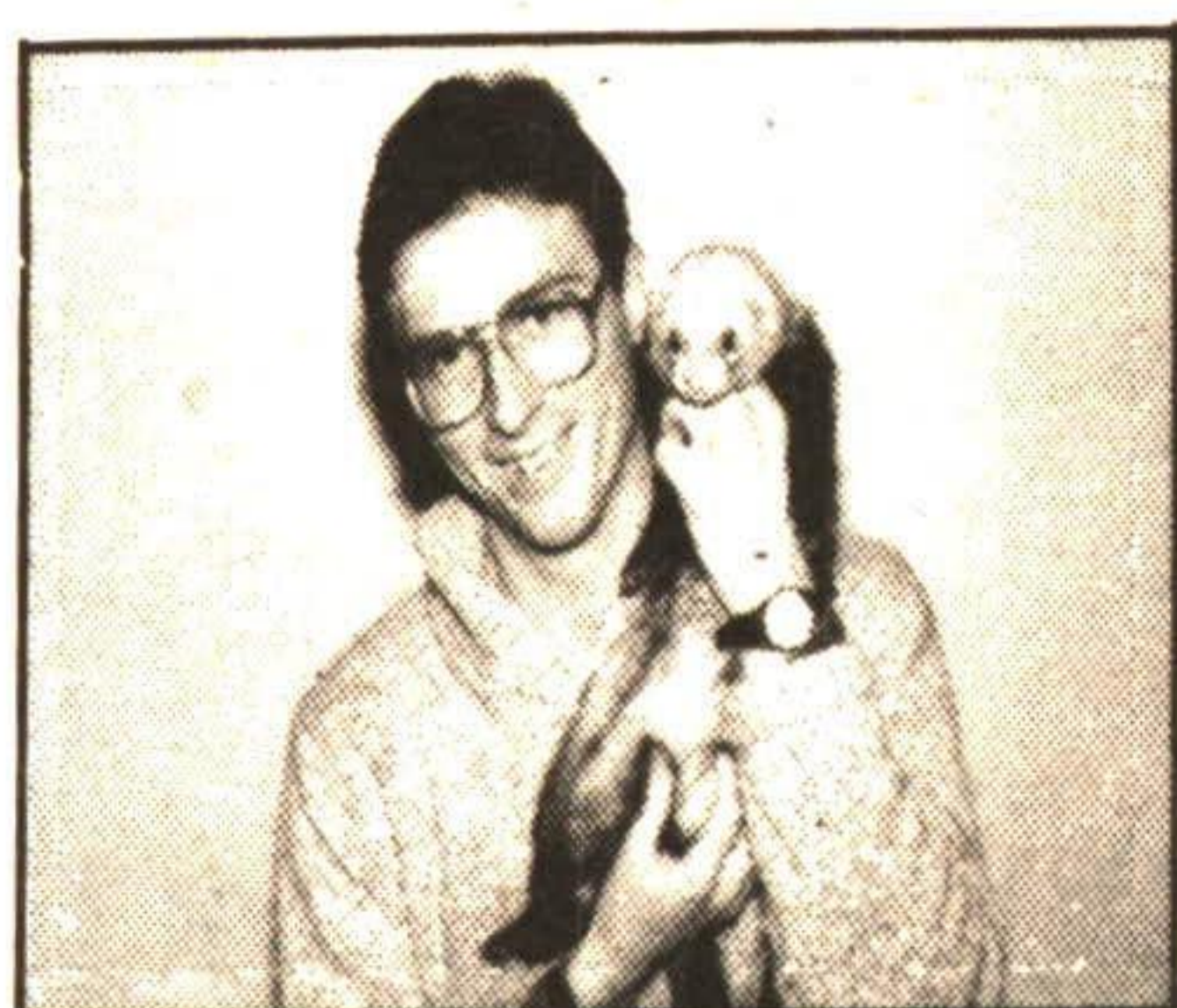


Defining the art of angling on opening day

With the opening day of trout season today I decided this year to once again prepare eager anglers in Halton with a number of 'unique' definitions from Henry Beard and Roy McKie's, "A Dictionary For Constant Anglers, Weekend Waders, And Artful Bobbers."



Nature's Way

By KEVIN CALLAN

Advice - Two or more pieces of contradictory angling information contained in a single phrase or sentence.

Bedrock - 1. Type of stream bottom consisting of bare rock. 2. Bothersome stony object found under sleeping bag.

Can - The only place where salmon are sure to be found with any degree of certainty.

Catch-and-release - 1. Term for stretch of public stream where fish caught must be released alive. 2. Term for stretch of private stream where trespassers caught are released after a lecture, a series of threats, and a brief introduction to a large dog.

Dope - 1. Any fluid applied to a dry fly to make it float. 2. Any individual who applies this substance to a wet fly.

Fishing Trip - Journey undertaken by one or more anglers to a place where no one can remember when it has rained so much.

Flying Fish - Any undesirable fresh-water or salt-water fish,

such as carp or scup, which, after being caught by an angler seeking more valuable fish, is propelled violently through the air with a brisk arm movement.

Habitat - Place where a particular species of fish was last week.

Hot Spot - 1. Place on any given stream or lake, usually known only to locals, where fish can be found. 2. Place in the centre of the palm of the right hand of locals where money may be placed to help find #1.

Insect repellent - One of a number of "gag" items available in bait and tackle shops.

Leader - Short length of nylon or wire that connects a snagged lure to a tangled line.

Lie - 1. A place in a stream, river, or lake where fish lurk. 2.

Any simple declarative statement made by an angler about the location of such a place; or the number, size, and type of fish observed there; or the circumstances under which one or more of them escaped capture.

Minnow - Embryonic stage of a large fib.

Portage - The shortest distance between two hernias.

Rod - Flexible, tapered stick that is the basic tool of angling. Many fishermen find rods of even average length to be awkward to carry, but they can easily be shortened to a more convenient size by removing the top few inches with an ordinary car door, station wagon tailgate, or trunk lid.

Troll - Legendary creature thought to dwell in secluded spots in rivers from which it lures people to their doom.

Trout - Legendary creature thought to dwell in secluded spots in rivers from which it lures people to their doom.

Zzzzzzz - 1. Sound made by patient angler waiting for a bite. 2. Sound made by insect about to deliver one.

To further define the art of angling, refer to the rest of Beard and McKie's dictionary published by Workman Publishing, New York, Copyright 1983

Recreation Report

ADULT FUN

The Halton Hills Recreation and Parks Department has an interesting variety of programs for you to choose from this spring including:

Beginner Lawn Bowling

- fun, healthy activity in the great outdoors.

Tai Chi

- enhance your health by learning this historic Chinese art of gentle exercise and stretching.

Tennis Lessons

- beginner and intermediate classes for children and adults.

Also being offered are programs in Sewing, Golf, Special Needs Drop In, Fitness and Seniors T.V. and Games. Be sure to check your Brochure for more details on these and other exciting programs or call 873-2600 ext.268.

THE BIWAY

45-47 MAIN ST. SOUTH

COUPON



DUVET

BATHROOM TISSUE

1.29

Reg. 1.99

LIMIT 2 PER COUPON

VALID ONLY AT GEORGETOWN LOCATION FROM APRIL 30 - MAY 4

ADHS performs L'il Abner May3-5

The time is nearing for Acton High School's (A.H.S.) production of L'il Abner on May 3, 4 and 5.

The cast of the musical consists of many colorful characters. The star of the show, L'il Abner himself, is played by Peter Wilcox. Daisy May, the flower of his life, is portrayed by Mary Moore. Julian Sark and Lisa Nikkifork play the

couple of Pappy and Mammy Yolckham. Sean Coleman as Earthquake Magnam, and lots of other talented people who help make this show work.

The sets are almost done, the hard work put into them is starting to show.

The musical takes place at the school starting each show at 7:30

p.m. and tickets are available at the door.

A lot of time and effort has went into producing L'il Abner, the cast and all those helping out have put a lot of work into it. A.H.S.'s musical promises to be very entertaining for the whole family. Everyone is encouraged to come and watch the show.

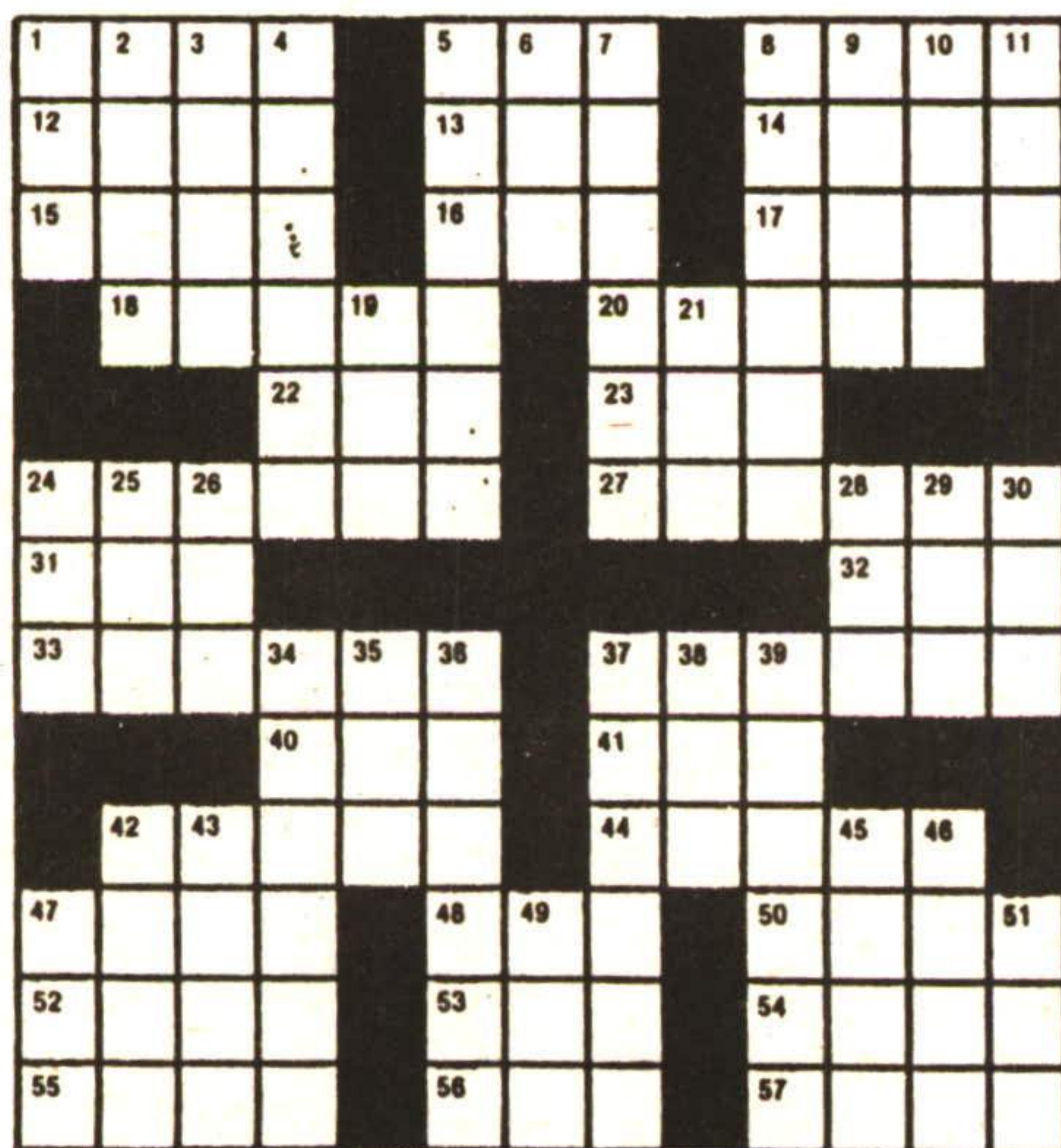
ACROSS

- Shoo!
- Mr. Gibson
- Helen's place
- Actress Raines
- Rage
- Boast
- African gully
- Rodent
- "Rock of ..."
- Actor Tyrone
- Detroit player
- Past
- Mr. Whitney
- Actress Janet
- New
- Indebted
- Uncle (Sp.)
- Refused
- Loop
- Born
- Eggs
- Sat
- Subway
- Ballet outfit
- One (Fr.)
- Related
- Seed covering

THIS WEEK'S PUZZLE ANSWER

DOWN

- Baste
- Applaud
- Actor Ray
- Formerly Formosa
- Reflect
- Time period
- Correspondence
- Terrible
- Fury
- Above
- Affirmative
- Sell
- Island (Fr.)
- "Agnes of ..."
- Wonder
- Desire
- And so forth
- Nothing
- Foot part
- Offend
- Shoe size
- Subtract
- Farce
- "... Got a Secret"
- Baby item
- Unadulterated
- Mr. Skinner
- Cross
- Ye ... Shoppe
- Label
- Or not
- Lair



FOR TRAVEL INFORMATION - GIVE US A CALL



232 GUELPH ST., UNIT 10, GEORGETOWN 873-2000

EDUCATION WEEK

April 29 - May 5, 1990
29 avril au 5 mai 1990

L'éducation: l'affaire de tout le monde / Education: it's everybody's business

Une invitation spéciale à célébrer avec nous

A special invitation to celebrate with us

On vous invite cordialement à vous joindre à votre communauté scolaire durant les heures de classe ainsi qu'aux activités de "portes ouvertes".

The public is cordially invited to visit all of our schools throughout the week during regular school hours and Open Houses.

CÉLÉBRONS ENSEMBLE!

COME CELEBRATE WITH US!



HALTON ROMAN CATHOLIC SCHOOL BOARD
LE CONSEIL DES ÉCOLES CATHOLIQUES DE HALTON

D. W. Schrenk, Chair

C. G. Bymes, Director