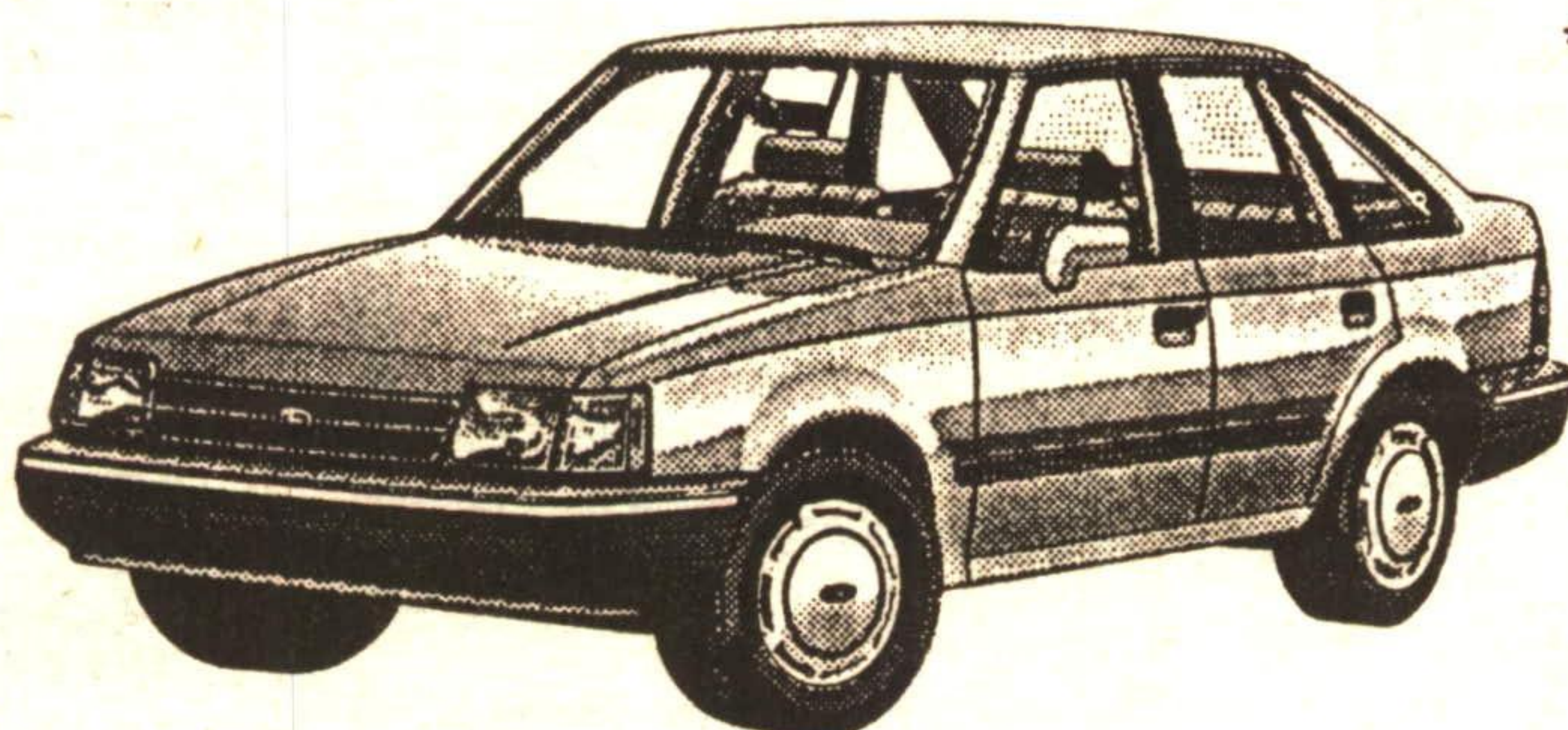


# CAN YOU AFFORD TO WAIT?

**6.9% FINANCING  
UNTIL APRIL 30TH!**

**HURRY!**



## ESCORT

- \* AM/FM STEREO CASSETTE
- \* AIR CONDITIONING
- \* SPEED CONTROL
- \* TILT STEERING
- \* TINTED GLASS
- \* INTERVAL WIPERS

FROM  
**\$221<sup>40\*</sup>**  
PER MONTH

**10.9% FINANCING  
UP TO 48 MONTHS  
OR  
\$750.00 CASH!!**

**TOPAZ  
FROM  
\$263<sup>54\*\*</sup>  
PER MONTH**

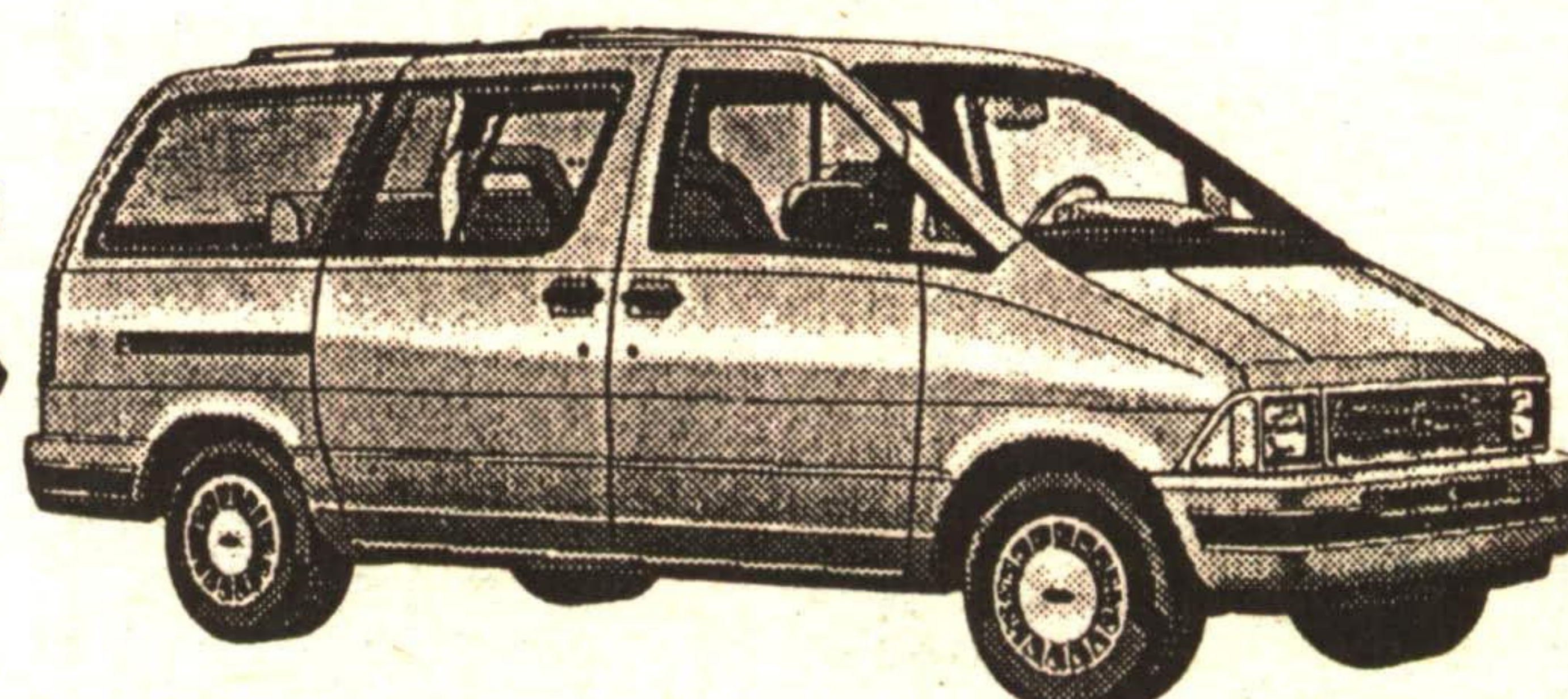
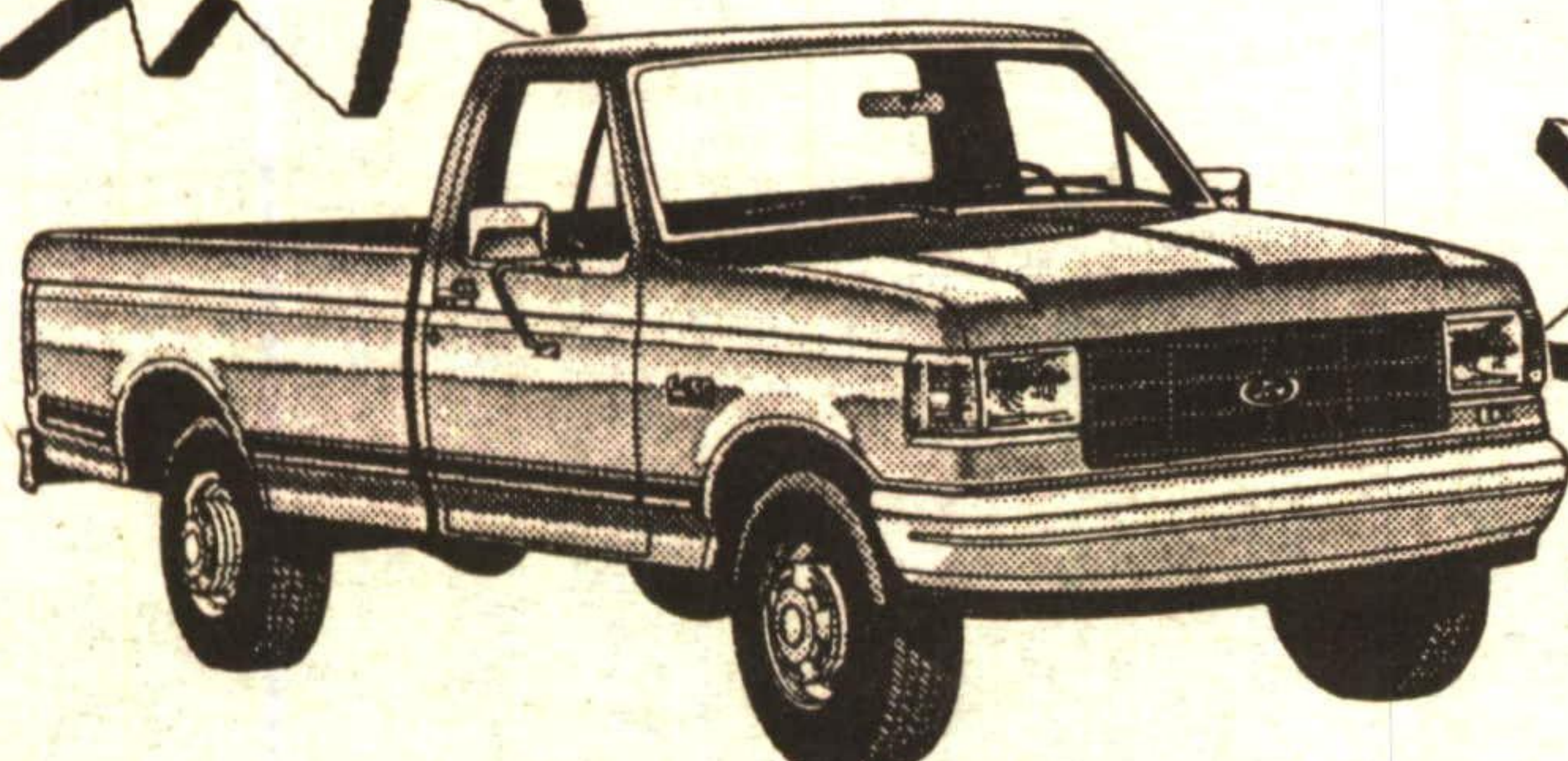


**RANGER  
FROM  
\$224<sup>48</sup>  
PER MONTH**

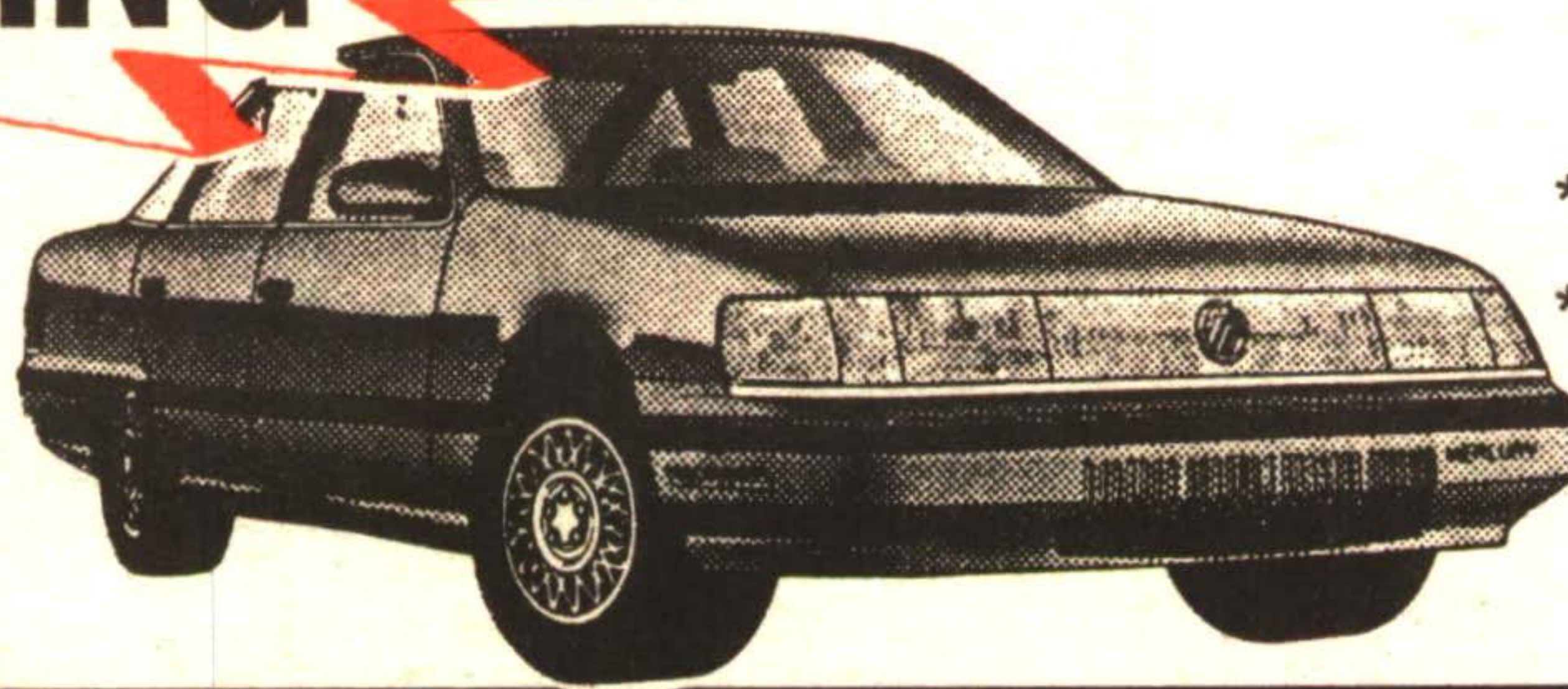
**F-SERIES REGULAR CAB  
FROM  
\$279<sup>55\*\*</sup>  
PER MONTH**



**AEROSTAR  
WAGON  
FROM  
\$322<sup>56</sup>  
PER MONTH**



**10.9% FINANCING**



## SABLE

- \* AIR CONDITIONING
- \* ELECTRONIC AM/FM STEREO CASSETTE
- \* POWER LOCKS
- \* POWER SIDE WINDOWS

LEASE PRICE **\$399<sup>99</sup>** PER MONTH

# PARK LINCOLN - MERCURY

**877-2261**

*Located Conveniently in Halton Hills  
on Highway 7 - between Georgetown and Acton*

**453-4421**



6.9% FINANCING FOR ESCORT ENDS APRIL 30TH. PRICE SHOWN IS FOR 48 MONTHS AT 8.9%\*\* . THESE OFFERS MAY NOT BE COMBINED. RETAIL BUYERS CHOOSING A REDUCED FINANCING RATE IN LIEU OF CASH REBATE ARE ELIGIBLE FOR 10.9% FINANCING OVER A MAXIMUM 48-MONTH TERM, ON APPROVED CREDIT. SPECIAL FINANCING IS AVAILABLE WHEN YOU PURCHASE OR LEASE ANY NEW 1990 OR PRIOR YEAR RANGER, F-SERIES REGULAR CAB, SABLE OR TOPAZ. ASSUMING A REBATE OF \$750.00 AS THE ALTERNATIVE, LEGISLATION REQUIRES THAT THE AMOUNT OF THE REBATE MUST BE INCLUDED IN THE COST OF BORROWING IN ORDER TO ARRIVE AT AN EFFECTIVE INTEREST RATE. COST OF BORROWING WILL VARY DEPENDING UPON THE AMOUNT FINANCED, TERM OF LOAN AND FINANCING RATE. SEE DEALER FOR DETAILS. PRICES SHOWN ARE FOR 48-MONTH LEASES AT 10.9%. DEPOSIT, FREIGHT AND TAXES EXTRA. VEHICLES NOT EXACTLY AS SHOWN.