

Children's Aid praised

Halton Children's Aid Society has received an unconditional license to provide foster care for the next year from the Ministry of Community and Social Services.

The letter granting this license included these words of praise from Program Supervisor Don Blanchet:

"Your foster care department is to be commended...I can also say that the meeting with a selection of your foster parents was, for both Jeanette and myself, one of the most positive experiences to date in

licensing. It was abundantly evident that your foster care staff have extended themselves in every direction required to meet the needs of the program and to be sensitive to the needs of the foster parents. I cannot remember when last I heard such an overwhelmingly positive response..."

Foster care is an essential service, providing family environments for children who must be separated from their own families.

Your Week Ahead Horoscope

ARIES
Mar. 21-Apr. 19

The Sun and Saturn combine to put you in the limelight. Look for an opportunity to enhance your status with power and prestige.

TAURUS
Apr. 20-May 20

Organizing and planning are your strong points. You could establish a study group, with serious objective or just enjoyment.

GEMINI
May 21-June 20

Something of the old, established way of life passes to make room for the new. Powerful changes take place.

CANCER
June 21-July 22

Throw off any feelings of loneliness or depression. Concentrate on putting out positive vibrations. You'll get positive feedback.

LEO
July 23-Aug. 22

It's a good time to examine techniques and procedures on the work front. Look for a better way of doing things.

VIRGO
Aug. 23-Sept. 22

Social gatherings bring much enjoyment. Feel free to express yourself--through actions as well as words and deeds.

LIBRA
Sept. 23-Oct. 22

Concentrate your energies on the tasks that really must be done. Leaving a lot of loose ends can be a drain on the energies.

SCORPIO
Oct. 23-Nov. 21

Seize any opportunity that comes your way to change circumstances that have been slowing you down. Move forward.

SAGITTARIUS
Nov. 22-Dec. 21

Let go of old patterns of behavior that are holding you back. Positive creative changes are waiting for expression.

CAPRICORN
Dec. 22-Jan. 19

What you accomplish at this time, with the Sun in your sign of Capricorn, will have lasting significance through the year.

AQUARIUS
Jan. 20-Feb. 18

A sudden release from some limiting circumstance or way of life leaves you with a feeling of relief--and dismay.

PISCES
Feb. 19-Mar. 20

Team effort is effective when everyone on the team is recognized as a contributor. Cooperate with others.



ANNE GENOE

RE/MAX

leathertowne realty limited

An Independent Member Broker
(519) 853-2086 Res. 853-1505
Tor. Line (416) 454-9101



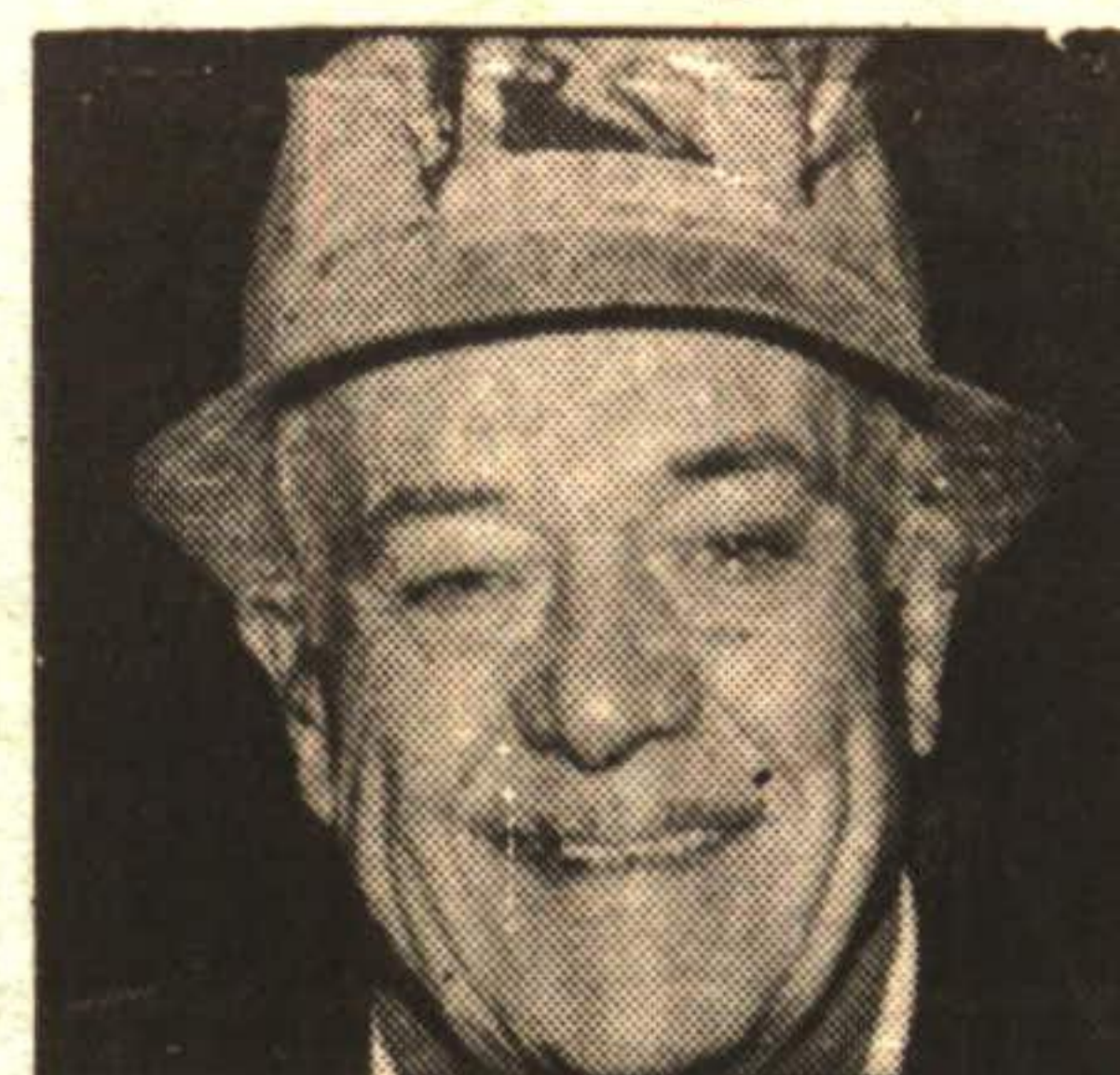
Trophy-sized black bear taken in the Killarney mountains

The black bear in the accompanying picture was shot while the writer was hunting in the rough and hilly country of the Killarney mountains with others who knew the country very well.

Several good-sized deer were also taken.

Some of the party were AVRO-employed, others were from Collingwood.

The beagle hound I'm holding was a veteran of the area. It was owned by Jack Patrick and was also well known by the other hunters. The black and tan beagle did a good job of pushing the big bear out of the swamp where he was holed up. It was a big job for such a small dog.



Outdoors

By GEORGE HOARE

The beagle also got credit for the four deer taken. We flew out by plane so most of the slugging was by-passed.

The boys were quite experienced at roping the bear to skids, which was done to protect the hide. It was a downhill job after that because we were 1,500 feet above sea level.

This story has been in mothballs for several years but several other hunters knew I had the trophy made into a rug, and asked me to make up a short story of the hunt in general.

Jack Patrick was a companion of mine when we fished Lake Simcoe in the winter.

But then that's another story for another time.

Now Enjoy the Outdoors and Tight Lines while jigging and safety as always.

Special service workers

Are you interested in working six to 15 hours per week with developmentally handicapped children in their homes? Are you 18 years of age or older? Workers are urgently required in the Halton region to assist parents in teaching life skills to their developmentally handicapped child. Call Halton Support Services at 416-849-8000.

Host families sought

The Respite Program is a service offered to parents of the developmentally handicapped to ensure that they get "time away" from the challenges that face them every day. Host families are urgently needed to help provide short term relief. Training and wages are provided. If interested call Halton Support Services at 849-8000.

CRIME STOPPERS



Phone

1-800-668-5151

Milton theft police puzzle

By SERGEANT D. ATKINSON

Halton Regional Police in Milton are requesting assistance in identifying the person or persons responsible for the entry and theft of \$2,800 in jewellery and silverware from a Milton residence.

On Tuesday, December 12, 1989, a home situated on the north side of Childs Drive at Coxe Boulevard was entered by forcing the side entrance to the house. This was a daylight entry, taking place sometime between 7:00 a.m. and 4:00 p.m.

Jewellery and silverware valued at \$2,800 was stolen. Included in the missing property are two sets of silverware, one for a setting of 6 and the second for a setting of 8.

Among the jewellery taken was a gold charm bracelet with about 20 gold charms which included an anchor, a heart, a lady bug, several small keys and two gold lockets.

Crime Stoppers will pay up to \$1,000 for information that leads to an arrest in this case or any other case. Callers are not required to reveal their identities or to testify in court. The Crime Stoppers toll-free number is 1-800-668-5151.

LEN TUITMAN AND STAFF PRESENT

CHRISTMAS TREE USES

Another Christmas is over, and soon you will be removing the tree decorations to store away until next season. But, do not be too anxious to get rid of your Christmas tree. After the holidays your Christmas tree has many uses.

Standing in the snow or tied to a post, the tree provides shelter and a perching area for birds. Suet and seed balls or orange slices can be attached to the branches to attract birds to your temporary back yard tree.

Another suggestion is to cut the branches off of the tree and place them in a tee-pee fashion around tender shrubs. The Christmas tree branches protect the shrub from the drying effects of the wind and at the same time holds snow around the shrub. (Snow is a natural insulator.) This works especially well with broad leaved evergreens such as: Rhododendrons, Euonymus, Holly and Boxwood. Once the needles have dropped off of the branches they will help amend the soil around the shrub as well. You can leave the needles on top of the soil to act as a mulch, or incorporate them to improve the organic matter and/or acidity of the soil.

You do not have to throw your tree out right after Christmas. You can let it benefit you for several months in your backyard.

Each week Christine Cole of Tuitman's Garden Centre and Landscaping, Highway 25, 1 mile south of Acton, 853-2480, will be presenting helpful tips and information to assist you in creating your garden showplace!

DEVELOP YOUR CHRISTMAS MEMORIES NOW ASK FOR YOUR

15% OFF



COLOUR PRINT PROCESSING

35 mm ONLY

JAN. 2nd to 20th

(with this coupon)

HALTON CAMERA EXCHANGE

130 GUELPH ST.

877-4433