

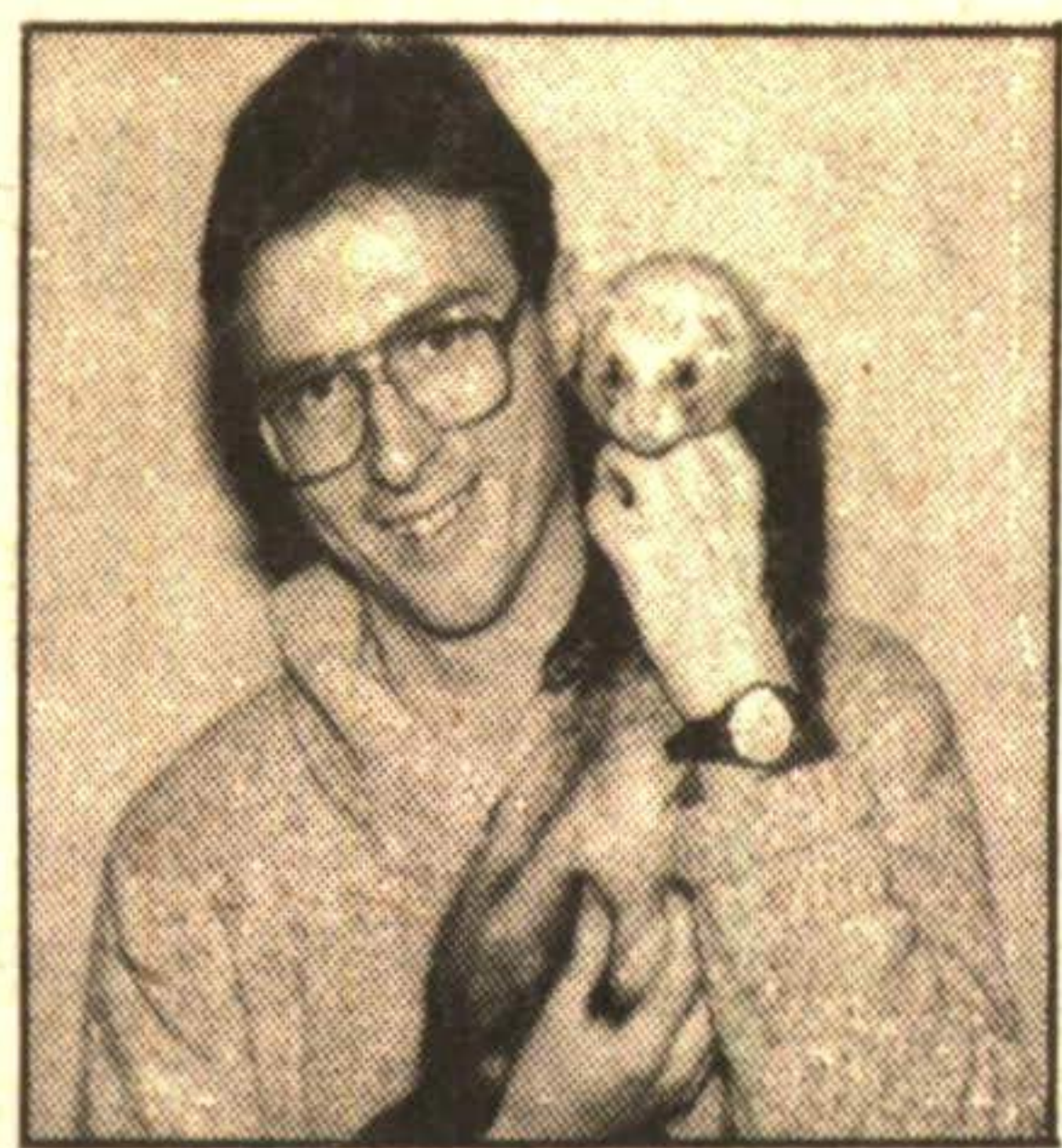
Nature's Way Waterwalker

By KEVIN CALLAN

"I am grateful for men and women who have created great monuments, but when I compare these with the natural world, it's no contest. I could take you along the shore of Superior in my canoe, and we could track, pole, and portage up rapids and falls to a place where heaven itself seems to open up and spill down a cascading torrent of pure white foam and spray."

Path of the Paddle
Bill Mason

On Saturday, Oct. 29, 1988 a legendary paddler, who left an endless number of amateur and experienced canoeists with the ability to witness the powerful magic hidden within the mist covered lakes, angry rivers, and secluded campsites, fought his last battle against our war with the environment and sadly lost. At age 59



William Clifford Mason died of duodenal cancer.

From his collection of unforgettable films, 18 in total with 58 national and international awards, I especially give homage to his last achievement - Waterwalker.

This unforgettable film captivates one man's romance with the beauty, mystery and power of the big lake the Ojibway call Gitchi Gumee. His relationship with this magnificent fresh water ocean clearly characterizes my personal feelings toward this great body of water for I once lived along the

shores of Lake Superior.

Just as Mason, historic explorers, fur traders and canoe enthusiasts, I too fought against the demon of the lake who the Ojibway say waves his spiny tail back and forth to create waves to swallow any intruder into his realm. I portaged up stream into the life-giving veins, exploring its wild splendor; and I have feared, faithfully respected, and deeply loved this majestic inland sea surrounded by rugged seclusion.

I have memories of canoeing along the bottom of 500 foot cliffs marked by ancient Ojibway paintings and topped with lush forest. My campsites were situated along lonely beaches laden with polished rocks, blowing sand, and bleached skeletons of sculptured timber. I have said good-bye to the most beautiful sunsets and greeted the morning's burst of sun and wind - I have seen the great spirit Waterwalker.

Miles and miles of shoreline

frame this perfect artistic creation. From Sault Ste. Marie to Agawa Bay and beyond, Highway 17 follows the coast giving easy access to short hiking trails into the rough interior or along the beaches and rocky ledges.

North of Lake Superior Provincial Park the TransCanada swings in and between Michipicoten Bay and Hattie Cove, leaving Pukaskwa National Park's coastline. Pukaskwa suits the multi-day trippers best. There are lots of excellent spots to camp along the way as well as along the interior coast. Wherever you camp there's plenty of driftwood for the evening fire.

This land also has its share of whitewater adventures. Beyond the coast, there are more than 60 rivers that flow into Mason's favorite shoreline. "When I look up those Lake Superior rivers, I just have to go and see what's up there," says Mason in his film Waterwalker.

Apart from Mason's favorite University River, with its deadly drops and pools, canoeists can challenge themselves against the spring run down the Pukaskwa River; a nine day trip taking you through nearly 60 class I and II rapids (this is not a novice river).

Another option is the Magpie River from the CPR station at Swanson Dam to the mouth - an eight day, 88 kilometre trip. Then there's my favorite, the Sand River, from Sand Lake.

All these veins filled with roaring foam cut through rugged landscape, made up of painful portages and adventurous rapids which Bill Mason lived for—a path for his paddle.

"I've shared with you many of my favorite places . . . because I think the only hope for what's left of the natural world is to rediscover that love and compassion for it that the native peoples talk about."

Bill Mason 1929-1988

Insurance rates. . .

Continued from page 1

evaluated by the insurance companies to determine their premiums.

The driver's insurance rates will be determined by the driver's experience and history (ie: number of tickets, accidents), and not strictly by the age and sex of the person, he explains.

"There will be pluses and minuses all over the place, and not just an average 7.6 per cent increase," Denny says. "A brand new driver, though, is going to feel one helluva wallop."

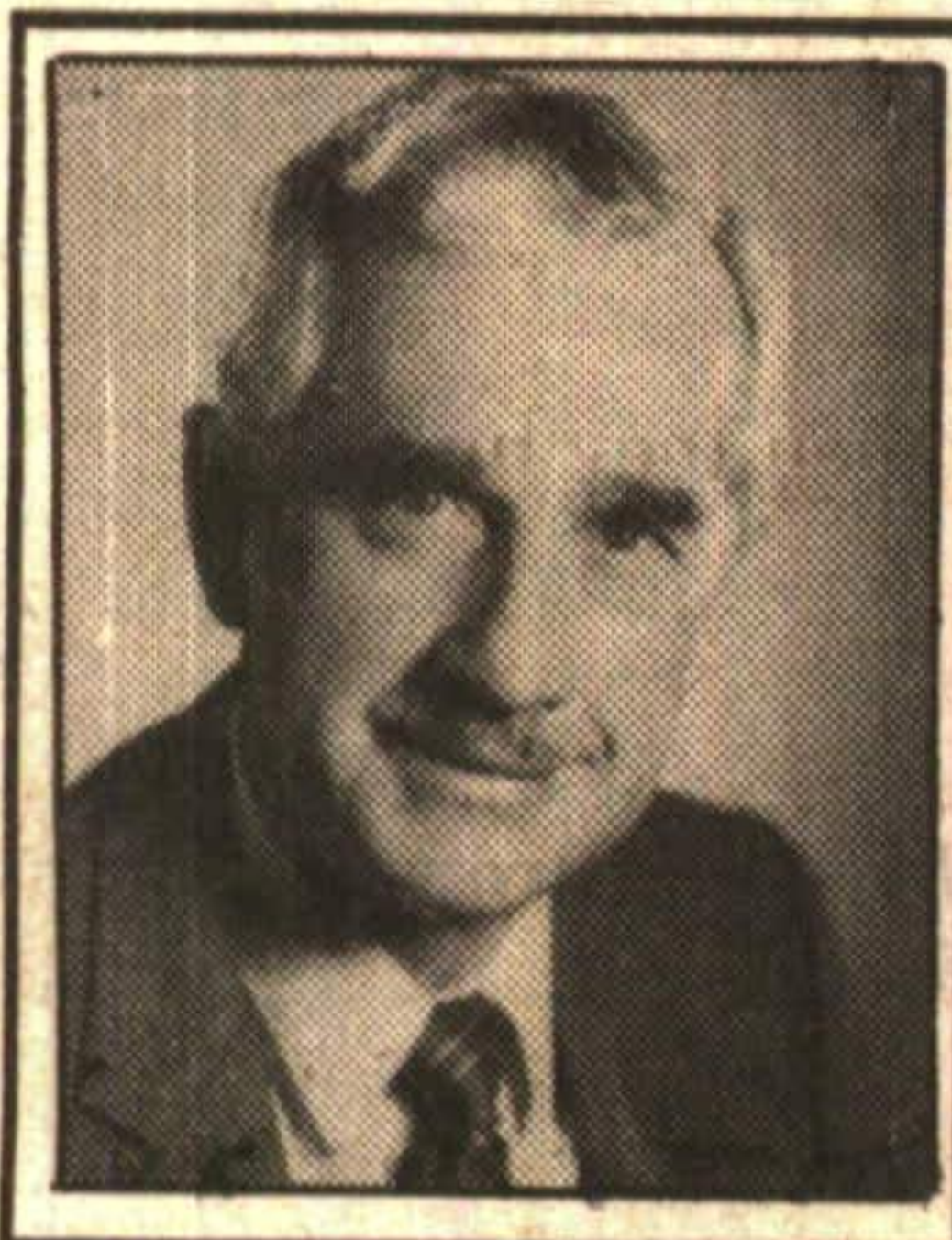
Last week's announcement of the insurance increase was premature, he adds. People won't begin to notice any

difference until they begin to renew their policies, because the policy changes are not due until June 1, says Denny. "We're going to go crazy then when all the policies start to change," he adds.

But for now, insurance companies such as Acton's Daly Farnworth

McGregor Insurance are suggesting for the next three months that their clients renew their insurance policies for one year, to put off the increases expected in June and again next January. Once a policy is renewed under your current rate, you won't see the increase tacked onto your policy until it comes up for renewal again.

HELPFUL HOME HINTS



DON PARKER, B.A.
Sales Representative

TOLL FREE PAGER 1-551-7007



MARG PARKER
Associate Broker

TOLL FREE PAGER 1-551-7034

TOWN
&
COUNTRY

HOW TO OPERATE SNOW BLOWERS SAFELY

Did Santa leave you a snow blower for Christmas? Have you used it yet? No? Good, then read this first.

Snow blowers are excellent work-saving devices. They will move more snow faster and farther than any man ever born, regardless of how macho he may be!

They are also very good at picking up stones from your driveway and hammering them into the side of your car, or your neighbor's car, or your wife's car! (Can't you just imagine it? Hear the ricochet whine of the stones zinging through the frosty air, followed by the Pinnggg! Pinnggg! Pinnggg! as they hit the door panels, or whatever sound they make when they hit the windshield! Gad! Send shivers up our spines too!

They are also excellent at chewing off fingers (sometimes hands) when thoughtless operators try to clear clogged augers while the machine is running!

Are you ahead of us now? Have you just got this week's lesson down pat? Let's review it just the same.

Plan your circuits BEFORE starting. Consider the direction and distance of the discharge flow. Will the wind be a factor? Think of the CONSEQUENCES OF misjudgement!

NEVER attempt to unclog the auger while the engine is running. Stop the engine, then use a stick, not your hand.

NRS BRAND REALTY INC. Realtor

45 Mountainview North, Georgetown CALL (416) 873-0300
Res. (519) 833-9151 Tor. 840-1268

Len Tuitman and Staff present

Green Thumb Gardening

Soil Salts

Have you ever noticed a white deposit or crust develop on the soil surface or pot of your houseplants? If you have, it's an indication that there is a build-up of mineral salts in the soil. A build-up or accumulation of these salts can slowly damage a houseplant. They will burn the roots and any foliage that comes into contact with the pot. In extreme cases, leaf tips and margins will turn brown (scorched) and new foliage that develops could be distorted or misshapen.

Most mineral salts originate from the fertilizer fed to the houseplants, but they can also arise from tap water. Fertilizer given to plants may not always be completely used by the plant and over time they build up in the soil. Therefore, the more you fertilize a plant, or leave it in the same pot of soil, the greater the accumulation of salts. Obviously, a plant with visible symptoms of salt accumulation should not be fertilized. This would only make the situation worse.

At the first sign of salt build-up the soil should be leached out. Salts are soluble and can therefore be leached out of the soil. Slowly running water through the soil for an extended period of time would accomplish this. However, in severe cases leaching the soil will be of no value. The soil will have to be replaced with fresh soil.

Each week Christine Cole of Tuitman's Garden Centre and Landscaping, Highway 25, 1 mile south of Acton, 853-2480, will be presenting helpful tips and information to assist you in creating your garden showplace!



DENTURE THERAPY CLINIC

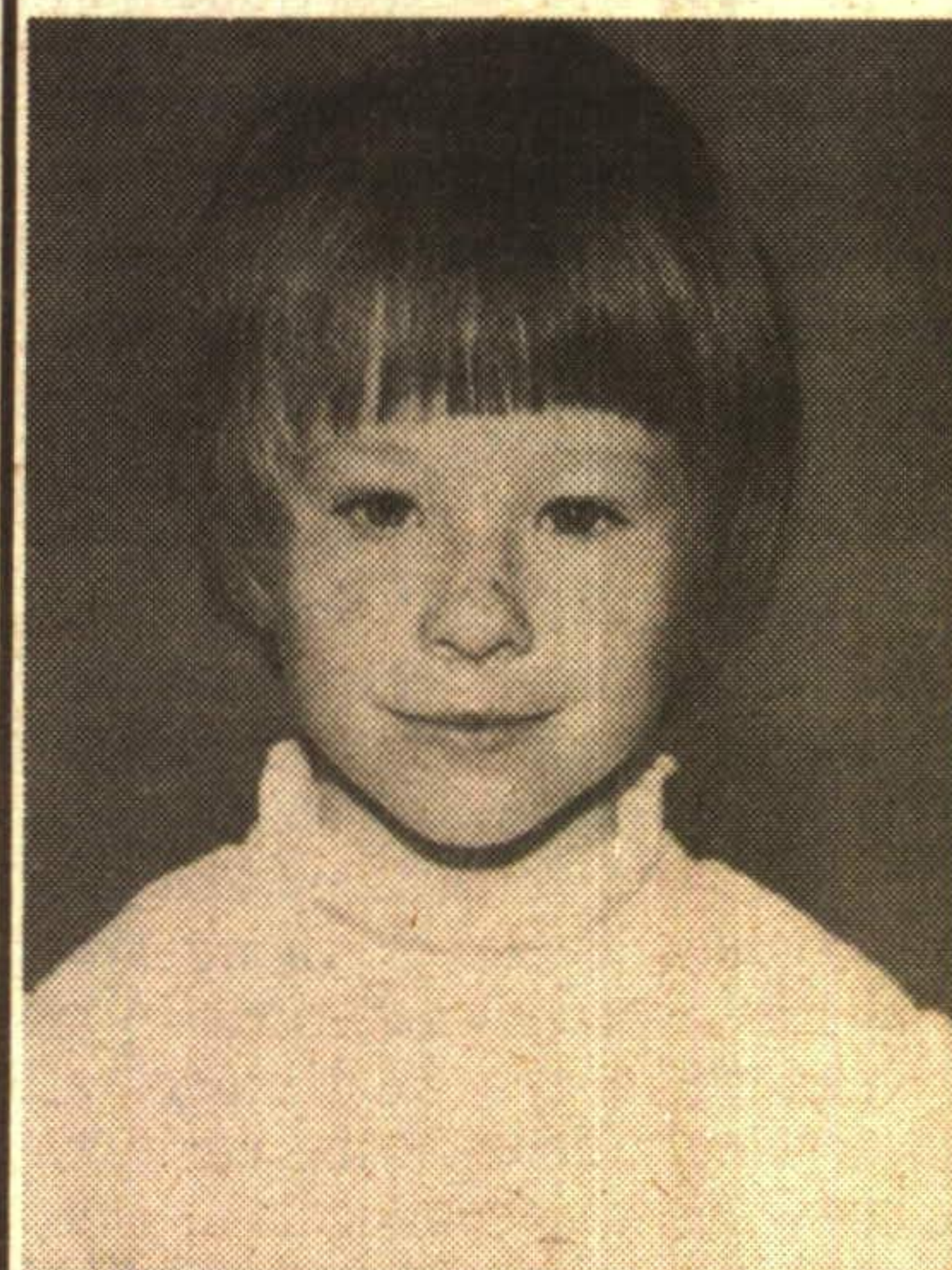
A.W. TRENTON, D.T.

18 CHURCH STREET
GEORGETOWN

ACROSS FROM LIBRARY
AND CULTURAL CENTRE

877-2359

HAPPY 18th SHIELA



LOVE,
MOM, DAD,
IAN & LIZ



Jack TANNERS
TABLE
LL.B.O.

Friday & Saturday Dinner Buffet

This buffet features all your favorite dishes, including carved Roast Prime Rib of Beef and Flambeed Shrimp. Our regular a-la-carte menu is also available along with our daily seasonal blackboard specials. Come out and treat yourself this weekend!

Dinner is served 5:00-10:00 p.m.

\$16⁹⁵ Adults

\$7⁹⁵ Children (12 & under)

Reservations Recommended 853-3440