

LEADER

GO TO...



MARIA BRITTO
Sales Representative
905.456.3232
1.866.251.3232
maria@maria.britto.com
www.mariabritto.com

RE/MAX REALTY
SPECIALISTS INC.
BROKERAGE

THE LEADING REAL ESTATE PUBLICATION SERVING THE 26,740 HOMES OF HALTON HILLS AND SURROUNDING AREAS • THE INDEPENDENT & FREE PRESS
CONTACT: SUE SPIZZIRI 905-873-0301 EXT. 234 OR EMAIL REALESTATE@INDEPENDENTFREEPRESS.COM



OPEN 24/7
HeyRay.ca

Member of REALTOR
Ray Chesher
905-877-9001

Holly Light • Jennifer Sarqueant • Karen Pedersen

unleash the power
of your home ... to sell for more!

free *with listing* home staging
furniture, artwork & accessories included!

Your Home Today

75 Guelph St. Georgetown, ON L7G 3Z8
*sales representative

YOUR REALTOR® FOR LIFE



5 Minute
Call Back
Policy

Denise Dilbey
Broker

Direct: 416-919-9802
Office: 905-877-8262

ddilbey@royallepage.ca
www.ddilbey.com

Offering a complete package
of real estate services including

- free market evaluation • counselling
 - estate planning • investment
- Call to see how we can customize
our services to meet your needs.

"Moving Beyond Expectations"



ROYAL LEPAGE

Meadowtowne Realty, Brokerage
Independently Owned and Operated

OPEN HOUSE SAT. 2-4 PM
4 PINE STREET, ERIN



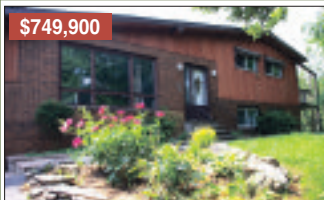
\$314,900

AN "IDEAL" LOCATION - ERIN

This charming 1+1 bedroom brick bungalow, nestled on a private 66' x 165' lot, lets you stroll to everything in the quaint Village of Erin. Walk-out to a deck overlooks a fully fenced park-like backyard oasis. Gleaming hardwood flrs accent the open concept living/dining area. Updated Central air, steel roofing, access to garage plus a sep entry to 2nd bdrm in bsmt for more living space.

MLS X2401111

\$749,900



ROOM FOR HORSES ON 10 ACRES - MILTON

A winding paved driveway leads to a spacious 3 bdrm home offering country comforts on a scenic 10 acres. In-law suite w/sep. entry. 3 stall barn w/ track & wash area, fenced paddocks, pastures, riding ring & hiking trails thru open meadows & mature forest. Close to Hwy 401, Guelph, Milton & Halton Hills.

MLS# W2390152

\$524,900



QUALITY, LIFESTYLE & LOCATION - ERIN

Updated 2+2 bdrm, 2 bath, open concept raised bungalow on 125' x 282' lot. Above ground, sun filled, fin'd walk-out bsmt gives you 2,300 sq. ft of living space. Stunning kitchen w/granite counters, built in appl's & walkout to deck. Wet bar, propane fireplace & sep. entry. 2 car garage. Boardwalk leads to paradise. Paved rd. Updated Roof, Windows, Kitchen and more.

MLS# X2372590

\$389,900



SOME FIXIN' NEEDED ON
4 ACRES - HILLSBURGH

Bring your vision and tool belt to transform this 4 bdrm, 1.5 storey, open concept home nestled in the trees, into something special. A 1,800 sf addition added in 2000 to provide 2,300 sq ft of living space. 200 amp hydro & drilled well. A 30'x13' separate "Cabin" offers 2nd well & hydro hook up. Call for more details.

MLS# X2294879

OPEN HOUSE SUN. 2-4 PM 8770 WELLINGTON RD. 124, ERIN



\$399,900

COUNTRY BUNGALOW OFFERING A MIX OF OLD & NEW—ERIN

Spacious 3 bdrm 3 bath bungalow on a 120' x 130' lot. Open concept principal rooms are ideal for entertaining. Stainless appl's accent a kitchen w/2 breakfast bars & walk-out to private 16' x 30' deck. Master ensuite. 2011 Fin'd bsmt & 5 pc bath w/jet tub, glass shower, granite vanity and heated flr. 2 car garage & room for large equipment parking w/access to paved road. Updates since '07 include drilled well; septic; roofing; insulation; forced air furnace & air conditioning.

MLS# X2350904

\$1,469,000



HIGHWAY COMMERCIAL/RESIDENCE - ERIN

With multiple retail & hwy commercial uses on 3.86 acres your business belongs here. 2,400 sq. ft of retail; 3,600 sq. ft greenhouse; 1,600 sq. ft garage; 1,250 sq. ft poly shed & private 4 bdrm, 1,800 sq. ft residence. Parking for 80+ cars and 330 ft highway exposure.

MLS# X2297024

\$498,000



PRIME CORNER EXPOSURE - ROCKWOOD

Build a profitable business from this updated Village Commercial (C1) property. Hrdwd, 10.8 ft ceilings, French pocket doors & beamed ceilings. 2 hydro meters, natural gas furnace & A/C, town water & sewer, 2 entrances, parking lot, covered porch & more.

MLS# X2091854

\$269,000

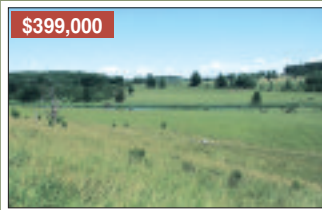


READY TO BUILD YOUR DREAMS - ERIN

Blanketed by mature trees and open meadows, this stunning 4 acre lot offers enchanting areas to build your dream home. Driveway access installed and offers 450 ft frontage on a paved road. Backs onto farmland. Survey available. Close to Guelph, Acton, Erin & Orangeville.

MLS# X2349037

\$399,000



STUNNING RIVER VIEWS - SOUTH BRUCE

This is more than just farm land and mature forest - personally I have to say this is one of the most beautiful properties I have seen. 43.5 acres of stunning scenery. Ideal site for your dream home with walk out basement overlooking gentle rolling hills & magnificent meandering river.

MLS# X2349020

\$260,000



22.76 ACRES - CALEDON

Once in a lifetime opportunity to own 22.76 acres with nature at your doorstep. Mixed forest, streams & grassy meadows. Ideal getaway w/ potential to build your dream home on designated Credit Valley Conservation building site. Driveway access from paved rd. 500+ ft on Winston Churchill Rd. Close to Erin, Orangeville and Caledon Village.

MLS# W2154640

Committed to Residential, Farm and Country Properties - Acton, Amaranth, Brampton, Caledon, East Garafraxa, Eramosa, Erin, Georgetown, Guelph, Halton Hills, Hillsburgh, Milton, Mississauga, Mono Oakville, Orangeville, Rockwood and surrounding areas.