



HaltonHomes.com
 905.877.5165 OFFICE
 For more info such as floor plans and virtual tours visit www.HaltonHomes.com



SALES REPRESENTATIVES
 John Hill, Glenda Hughes, Matthew Hill, Anita Huggins



OPEN HOUSE SATURDAY 2-4 PM



CENTURY HOME ON A HUGE LOT IN THE PARK DISTRICT!
16 GEORGE ST., GEORGETOWN

This is an opportunity that doesn't come along very often. This charming two-storey home with three bedrooms and an eat-in kitchen has been updated while retaining much of its vintage charm. You couldn't ask for a better location than the Park District, within walking distance to downtown shops and restaurants. You'll enjoy the large private family-friendly yard with mature trees.
\$499,900 **MLS W2401209** **16George.ca** **12-298**



\$399,900

OPEN HOUSE SUNDAY 2-4 PM



AWESOME UPDATED CENTURY HOME!
182 MAIN ST., ERIN

No need to live in the past! Beautiful kitchen & baths; updated plumbing, furnace, wiring and stunning décor. 12' ceilings and 12" baseboards! Main floor FR & office! Gorgeous treed flat lot with no neighbours behind! Walk to town, schools & Rec Centre. Live the good life in Erin!
\$399,900 **MLS X2389024** **182Main.ca** **12-272**



OPEN HOUSE SUNDAY 2-4 PM



BIG, BEAUTIFUL BUNGALOW ON ONE+ ACRE!
17 SHORTILL ROAD, BALLINAFAD

Sprawling beauty on a stunning tree, private lot w/ground pool. Big country kitchen; family room overlooks tranquil gardens. A Homes & Gardens Winner! Gracious foyer with spiral staircase down to finished lower level. Big open concept kitchen opens to a fabulous family room and wet bar. 3+1 big bedrooms. Don't miss out on this one!
\$849,900 **MLS W2395681** **ShortillRoad.ca** **12-283**



\$674,900

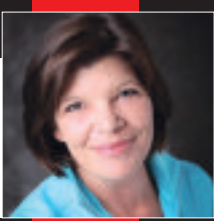
WELCOMETO ELEGANT LIVING!
19605 MAIN ST., (ALTON) CALEDON

Just 10 mins to Erin; 25 mins to Georgetown! Fabulous spacious home with dream kitchen. Half an acre beside Osprey Golf Club. 2 bedroom in-law suite. Fabulous!
\$674,900 **MLS W2390570** **MainStreetAlton.ca** **12-274**



RENTAL IN PRIME DOWNTOWN LOCATION
61 MAIN ST., S., GEORGETOWN

Brand new 2nd flr professional office space. High ceilings, exposed brick walls, lots of natural light. Includes washroom & kitchenette.
\$1,400/month **MLS W2385091** **12-033**



Elizabeth Doell
 Sales Representative

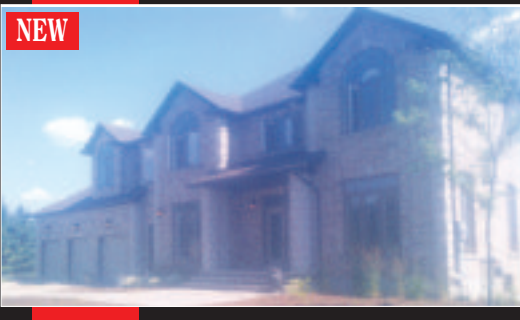
Johnson Associates
 REAL ESTATE LTD., BROKERAGE
905-877-5165
www.lizsellshomes.com
 email: edoell@trebnet.com



Dr. Presswood Team
 REAL ESTATE LTD., BROKERAGE
 905-877-5165 (24hr) / 1-888-877-5165
www.presswoodteam.com

Johnson Associates
 REAL ESTATE LTD., BROKERAGE
 905-877-5165 (24hr) / 1-888-877-5165
www.presswoodteam.com

OPEN HOUSE SATURDAY 2-4 PM
46 ANDERSON CLOSE, ERIN



DID YOU SAY YOU WANTED A VIEW...?

This is Glorious! Sit on your deck overlooking the pond, your pool, the valleys and the trees! This almost new Pidel built home is located only minutes to Guelph, Erin and Halton. Gorgeous landscaped 2 acres with a huge salt-water pool. Beautifully finished throughout, with granite, hardwood floors, wrought iron staircase, massive kitchen and great room, 4 bedrooms, office/den, plus a huge walk-out basement! Call Liz Doell for your appointment to view!

4 BEDROOMS! \$424,900
WHAT A DEAL!

Four bedrooms family home in Georgetown South ready for the next family. All the big stuff is done, windows, shingles, furnace, CAC, doors! Main floor family room with fireplace, eat-in kitchen, main floor laundry. Yup we've got it here. Come and see for yourself. Call Liz Doell to view this home today . . .



OPEN HOUSE SUNDAY 2-4 P.M.
22 HILLSIDE DRIVE, GEORGETOWN

ENTERTAINER'S DREAM
 Located in Marywood Meadows, walk to the park, downtown.
\$575,000



PERFECT LOCK AND LEAVE TOWN HOME
 Executive Town Home, granite, hardwood, finished basement.
\$469,900



TWO LOTS
 1 building lot 1.246 acres and larger lot 48.75 acres.



MEDICAL OFFICE FOR LEASE
 Great location, lots of parking, zoned for medical use.



LOCATION! LOCATION! LOCATION!
 Rarely offered retail space that is located in the heart of Georgetown retail strip. High traffic location that offers high visibility/exposure w/steady traffic all day long. Call today!!



PROFESSIONAL OFFICE SPACE
 Ideal location for medical, business professional located in great plaza anchored by MM Meats, Little Caesars and well established medical and professional offices.
 2048 sq. ft, \$13.00
MLS# W2227135