

**lynnandjohn.ca**  
 E-mail: lynn@lynnandjohn.ca  
**905-873-0440**  
 Office: 1-800-268-3434  
**Lynn Drewry & John Drewry**  
 \*Salesperson \*\*Broker



**RE/MAX**  
 REALTY  
**SPECIALISTS**  
 Inc., Brokerage.

**Your Home Today**  
 Realty Inc. Brokerage  
**GingerHomes.ca**

**Julie Scarlett**  
 sales representative  
 cell 905-699-9010  
 office 905-877-9001

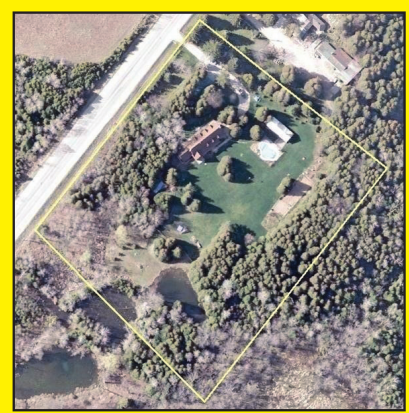


**BEAUTIFUL STONE FRENCH CANADIAN POST & BEAM HOME  
 5.5 PRIVATE ACRES + INGROUND POOL + POOL HOUSE**



**JUST LISTED**

**\$799,000**



- Adjoining protected conservation lands
- Includes 1.3 acres of wooded forest + Pond
- Great for fishing or watching ducks & herons
- Stone country home hidden down a private driveway
- Full of country character and charm + 3 fireplaces
- Hardwd flring thruout both floors; teak, cherry, maple
- 4 Bedrms, 3 Bathrms renovated open concept design
- Over 3000 square foot on two levels
- Newer separate detached oversized 4-Car garage
- Inground heated Pool fenced with flagstone deck
- Screened Pool House enclosure
- Upgrades include Shingles, Furnace, Windows
- Major renovation stunning granite gourmet Kitchen
- Huge L shaped Granite Island and Breakfast Bar
- Travertine Marble radiant in-floor heating
- Floor to Ceiling matching china cabinets & hutch
- 2 renovated Bathrooms w/ granite and 2 claw foot tubs
- Mn flr reno 20 x 20 Office, Kids Playroom or Workshop
- Bonus! W/ up to full attic with 14' ceilings easy to finish

**BRIGHT & BEAUTIFUL**  
 This 4+2 bedroom, 3.5 bath home is located on a friendly street close to Park Public school. There is more than enough room for your entire family with an incredible walkout basement that features 2 bedrooms, full bath and kitchen.

**\$639,900** **MLS W2301405**

**Ilda Luberi**  
 \*Sales Representative  
 Fluent in Portuguese

DIR: (416) 729-5116  
 BUS: (905) 793-5000  
 (24 Hr Pager)  
 FAX: (905) 793-5020  
 TOLL FREE: 1-800-631-5216  
 ildaluberi@royallepage.ca  
 www.ilda.ca



**ROYAL LEPAGE**  
 CREDIT VALLEY, Brokerage  
 INDEPENDENTLY OWNED AND OPERATED

10045 Hurontario St., Unit 1, Brampton, L6Z 0E6

**\$1,075,000** **Absolutely stunning views on this picturesque 37+ acre gentlemen's farm! Boasting a beautiful quality custom built approx 2800 sq. ft. sidesplit with 4 car garage and insulated barn with water & hydro.**

**Thinking of Selling?? Call Me Today For Your Free Market Evaluation. I Have Numerous Buyers Looking in Georgetown!!**

**ROYAL LEPAGE**  
**ROYAL CITY REALTY**  
 INDEPENDENTLY OWNED AND OPERATED BROKERAGE




**Heather Morison**  
 Broker & CLHMS  
 DIRECT: 905 873 4266  
 OFFICE: 519 853 9924

**Jennie Stanhope**  
 Sales Representative  
 DIRECT: 519-362-4148  
 OFFICE: 519 853 9924

**NEW PRICE**  
**The Work's All Done!**  
 From the 40 year shingles on the roof to the finished Rec Room, with stone gas fireplace & pot lights, plus all the windows, bathrooms, flooring, lights, kitchen counter, wiring & plumbing in between, this 3 bedroom, 2 bath Stone & Aluminum home is "move in ready". Oh, did I mention the mature trees, pond & big backyard? Better hurry on this one! Asking \$344,900

**NEW**  
**OPEN HOUSE**  
 SAT., MARCH 31 ~ 2-4 PM  
 SUN. APRIL 1 ~ 2-4 PM  
 6666 2ND LINE,  
 CENTRE WELLINGTON  
 2799 sq. ft. Heritage Home near Fergus on almost 2 acres with workshop. Asking \$599,900.

**NEW**  
**Circa 1885 - Overlooks the River**  
 This truly unique property, located in a quaint & artistic village just an hour west of Toronto, has stood the test of time! Tasteful renovations with antique fixtures, pine planks, barn boards & hand pegged beams enhance the original features of this stone & wood structure. The 2 bdrm "Gallery" & 1 br "Loft" apartment offer exciting possibilities for the entrepreneur! Asking \$599,900.

**NEW**  
**OPEN HOUSE**  
 SAT., MARCH 31 ~ 2-4 PM  
 SUN. APRIL 1 ~ 2-4 PM  
 5779 3RD LINE,  
 GUELPH ERAMOSA  
 2700 sq. ft. Newer custom built stone house on nearly 2 acres in rural Guelph/Eramosa. Asking \$669,900.

**Invest In Your Future**  
 Here's a great investment opportunity: Live in the spacious 3 Bedroom Bungalow with its large Deck and big Backyard, set up your "in-laws" in the 2 Bedroom lower level Suite with above grade windows (or legalize it for rental income) and utilize the storage space in the Detached Heated Workshop/Man Cave! Asking \$329,900

**NEW**  
**OPEN HOUSE**  
 SAT., MARCH 31 ~ 2-4 PM  
 SUN. APRIL 1 ~ 2-4 PM  
 21 TRILLIUM TERRACE,  
 ACTON  
 4028 sq. ft. Custom built home backing onto Blue Springs golf course. Asking \$979,900.

**RE/MAX**  
 Real Estate Centre Inc., Brokerage  
**1-800-834-5516**  
 \*based on mls sold statistics 2010.




**NEW** **\$209,900**  
**SAY BYE TO YOUR LANDLORD...**  
 with this very affordable, freshly painted, 3 bdrm, 3 bath end unit. Pond in a private, fenced backyard. Hurry! Great home with low carrying costs!

**NEW PRICE** **\$356,900**  
**EMPTY NESTERS AND FIRST TIME BUYERS**  
 Will love this stylish, affordable, newer home located on a quiet cres in an idyllic family neighbourhood. Cozy living rm w/ fireplace, hardwood flr & vaulted ceiling. Spacious eat-in kit, w/out to deck, open concept din rm. Relax in the massive 4 pc bath w/jet tub plus C/air, C/Vac, WS, bsmt bth R/L, Gdo & 1 remote.

**1ST AD** **\$374,900**  
**STUNNING MATTAMY OPEN CONCEPT 'HILLSVIEW' MODEL**  
 In the desirable Hawthorne Village on the Escarpment. Features hrwd on main flr, 3 bdrms, eat-in kitchen with upgraded cabinets, quartz counters, backsplash, island w/raised breakfast bar, pantry, b/i appliances & w/out to yard. Watch your favourite show on a 52" Toshiba HD TV in the cosy fam rm with b/in ceiling speakers

**\$404,900**  
**FUTURE HOCKEY STARS WILL LOVE KENNEY ST.**  
 Nicely decorated 3+1 bdrm, 4 bath home located in idyllic family neighbourhood on sought after, child-friendly street.

**NEW PRICE** **\$239,000**  
**VIEW OF THE LAKE!**  
 Solid, 3 bedroom, detached home where all the major work has been done, new flooring throughout, freshly painted, newer roof, windows and furnace.

**NEW** **\$489,900**  
**THIS ALMOST NEW HOME IS SURE TO PLEASE**  
 Open concept design, spacious LR/DR, family size eat-in kit. w/ upgraded cabinets & w/o to rear yard, 2nd floor fam rm. Bsmt is almost finished with a sep. side entrance.