



**Elizabeth Doell**

Sales Representative



**Johnson Associates**  
REAL ESTATE LTD., BROKERAGE

**905-877-5165**

www.lizsellshomes.com  
email: edoell@trebnet.com



**ONLY ONCE IN A BLUE MOON....**

Do you come across a home as fine as this. There is virtually no detail overlooked in this magnificently finished home. Hardwood, granite, views, location! You name it...it's here. 4 + bedrooms, wet bar, games room, dual staircases, gas fireplaces. All this on 2 acres located in a prestigious Glen Williams estate. Contact Elizabeth Doell\* for your private viewing today. \$1,349,000.

Thinking of buying or selling?

**NOW** is the time to ask for your **FREE MARKET EVALUATION**



**The Presswood Team**  
never too busy for your referrals  
PRESIDENTS  
**JA**  
CIRCLE

**Johnson Associates**  
REAL ESTATE LTD., BROKERAGE  
905-877-5165 (24hr) / 1-888-877-5165  
www.presswoodteam.com

**OPEN HOUSE SAT. & SUN. 2-4 P.M. 5 ROSEFIELD DRIVE, GEORGETOWN**



**GREAT FAMILY HOME**  
Located on desirable street, large yard, garage, very bright and open home with hardwood. \$409,900.



**PERFECT LOCK AND LEAVE TOWN HOME**  
Executive Town Home, granite, hardwood, finished basement. \$499,900.  
MLS# W2189181



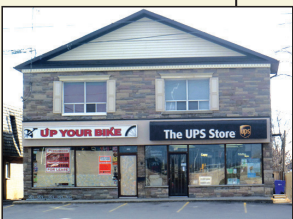
**PRESTIGIOUS GLEN ABBEY CONDO**  
Located in prime Oakville location with easy access to shops, parks, recreation facilities, public transit & major highways. \$232,900  
MLS# W2245732



**RETAIL AND OFFICE SPACE**  
1080 sq. ft., located on corner of Hwy. 7 & Winston Churchill. \$1500 per month.  
MLS# W2225852



**EXECUTIVE OFFICE SPACE**  
Great location, high end finishes, perfect location for a professional business!



**LOCATION! LOCATION! LOCATION!**  
Rarely offered retail space that is located in the heart of Georgetown retail strip. High traffic location that offers high visibility/exposure w/steady traffic all day long. Call today!!



**TOP SPOT IN TOWN!**  
Great location at the heart of Erin. High traffic strip mall situated at the corner of Highway 24 and Main Street. Well maintained complex with great tenants and busy Coffee Time chain. 3826 sq. ft. and can be divisible into 1543 or 2283.

Market is very active, thinking of selling call The Presswood Team today for Free Evaluation



**HaltonHomes.com**

905.877.5165 OFFICE

For more info such as floor plans and virtual tours visit [www.HaltonHomes.com](http://www.HaltonHomes.com)



SALES REPRESENTATIVES

John Hill, Glenda Hughes, Matthew Hill, Anita Huggins



**HERE'S A FANTASTIC OPPORTUNITY!**  
4901 ERAMOSA ERIN TOWNLINE, ACTON

Beautifully updated property with a guest house and a separate heated garage/workshop in addition to the main home which has been elegantly renovated. Lovely perennial gardens. This one is unique!  
\$524,000 MLS W2297082 TownlineRoad.ca 12-082



**RESIDENTIAL & COMMERCIAL ZONING!**  
8 GUELPH ST., GEORGETOWN

Great opportunity to own this solid building with lots of character close to downtown Georgetown. Multiple uses possible.  
\$525,000 MLS W2302229 MLS W2302256 12-090



**OPEN HOUSE SUNDAY 2-4 PM**

**POOL - WITH A MAGNIFICENT VIEW!**  
16 TRILLIUM TERRACE, HALTON HILLS

Magnificent views from this elegant home on 1.3 acres. Over 4000 sq. ft. finished on all levels, stunning yard and pool. The modern kitchen offers granite counters, pot lights, built-in oven plus an eat-in area surrounded by breathtaking views! Be in for the summer and entertain by the pool!  
\$1,225,500 MLS W2294594 TrilliumTerrace.ca 12-079



**SOLD**

258 McDONALD BLVD., ACTON



**SOLD WITH MULTIPLE OFFERS**

16 CEDARVALE COURT, GEORGETOWN



**WATERFRONT MODULAR HOME**  
8 MILLCREEK PARK, PUSLINCH

Well maintained home in the adult lifestyle community of Millcreek Country Club. 2 level deck overlooking water.  
\$139,900 MLS X2290017 MillcreekCountryClub.ca 12-069



**AWESOME! 3.5 TREETD ACRES TO FALL IN LOVE!**  
13 CEDAR DRIVE, CALEDON

Lovely spacious 4 level backsplit with beautiful views of the surrounding countryside. Kitchen has 2 walkouts to a cedar deck.  
\$729,900 MLS W2276670 CedarDrive.ca 11-299