

# LEADER

**MARIA BRITTO**  
Sales Representative  
905.456.3232  
1.866.251.3232  
maria@maria Britto.com  
www.mariabritto.com  
RE/MAX REALTY SPECIALISTS INC. BROKERAGE

**Bill McKeown**  
Broker  
877-5211  
www.mcqwin.com  
RE/MAX REAL ESTATE CENTRE INC. BROKERAGE

THE LEADING REAL ESTATE PUBLICATION SERVING THE 26,740 HOMES OF HALTON HILLS AND SURROUNDING AREAS • THE INDEPENDENT & FREE PRESS  
CONTACT: SUE SPIZZIRI 905-873-0301 EXT. 234 OR EMAIL REALESTATE@INDEPENDENTFREEPRESS.COM



**Ray Chesher**  
holly light • jennifer sargeant • karen pedersen  
sales representatives  
YourHomeToday Realty Inc. Brokerage  
**905-877-9001**  
**HeyRay.ca**  
promo code: NPL2012

**thinking of listing?**  
visit our website for valuable information & a chance to **win!** a kindle fire

## Working Hard To Be Your REALTOR® For Life



**Denise Dilbey**  
Broker  
Direct: 416-919-9802  
Office: 905-877-8262  
ddilbey@royallepage.ca  
www.ddilbey.com

Offering a complete package of real estate services including  
• free market evaluation • counselling  
• estate planning • investment  
Call me to see how we can customize our services to meet your needs.

"Moving Beyond Expectations"

RELO PRO, SRES, REALTOR, REALTOR ASSOCIATION, REALTOR INSTITUTE, REALTOR COUNCIL ON ETHICS, REALTOR BOARD OF STANDARDS AND PRACTICES, REALTOR NATIONAL BOARD OF REALTORS

**ROYAL LEPAGE**  
Meadowtowne Realty, Brokerage  
Independently Owned and Operated



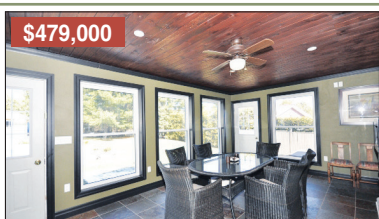
**\$649,000**  
**SIMPLY SENSATIONAL ON 1.86 ACRES!**  
Stunningly and professionally updated Bungalow w/3 spacious bdrms & 4 baths. Updated kitchen w/granite counters & new SS appls. Oversized windows accent gleaming hrdwd flrs. Huge Family rm w/French doors to office/dining rm. Breathtaking views from walk out bsmt w/WP & wet bar. Access to oversized garage from laundry room.



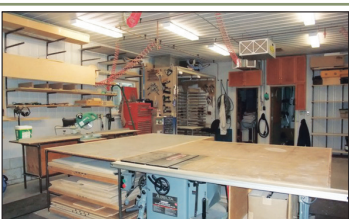
**\$424,900**  
**NESTLED ON 4 ACRES**  
4 bdrm, 1.5 storey, open concept 2,300 sq. ft home nestled in the trees. 2000 built 1,800 sq. ft addition to a 1950s dwelling. Ideal opportunity to complete finishing touches & vision. Main flr master w/walk-in closets. 50 ft x 20 ft organic garden, separate cabin for guests/play house. Located near Lake Roman and Village of Hillsburgh. Less than 1 km to paved road.  
MLS# X2294879



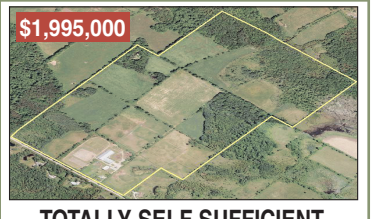
**\$824,000**  
**EXECUTIVE BUNGALOW**  
Impressive '06 built stone bungalow w/2 bdrm In-Law Suite on 131x161 ft estate lot. 5,000 sq. ft of luxurious living space w/stunning craftsmanship. Coffered 10 ft & cathedral ceilings & 8 ft doorways. Brazilian cherry, granite, ceramic & maple flrs thru-out. California shutters, Barzotti kitchen & granite counters. Fin'd 9 ft bsmt w/maple wood flrs, 5 pc bath, 2 bdrms, full kitchen & sep entry. Oversized 2 car garage, detached shop & 2nd driveway.  
MLS# X2210193



**\$479,000**  
**STUNNING BUNGALOW W/44 X 24 ft HEATED SHOP**  
There is no compromising to downsizing in this move in ready 2+1 bedroom, 2 bath bungalow w/open concept flr plan on a 66.5' x 141.58' private oasis. Stunning sun/family room. Finished basement. Hot tub, outdoor shower and stunning salt water pool for entertaining. Detached heated 44 ft x 24 ft shop & 28 ft x 16 ft shed. Lots of parking.  
MLS# X2203649



**\$1,469,000**  
**IMPRESSIVE C2 FACILITY ERIN**  
Retail with greenhouse, offices & storage areas. Stylish private 4 bedroom 1,800 sq. ft residence on 3.86 acres. Work/live opportunity with zoning for multiple retail & highway commercial uses. Formal landscaped grounds, 1,600 sq. ft garage with truck entry with separate 800 sq. ft office area; 2,400 sq. ft retail area; 3,600 sq. ft greenhouse with spa and waterfall; 1,250 sq. ft poly storage shed. Updated 50 year metal roof and windows. Parking for 80+ cars plus 330 ft highway exposure.  
MLS# X2297024



**\$1,995,000**  
**TOTALLY SELF SUFFICIENT ORGANIC 150 FARM**  
Olympic 200x80ft indoor arena [02], 100' x 64' heated STABLE & REGISTERED KENNEL, 74' x 48' bank barn & 88' x 50' drive shed [07]. Dressage ring, tracks & trails. Seeded paddocks. 3 bdrm 2 bath Century home. Paved rd close to Mohawk Raceway.  
MLS# W2202125



**\$549,000**  
**ROCKWOOD PRIME LOCATION**  
Village Commercial (C1), build a profitable business from this updated property. Hrdwd, 10.8' ceilings, French pocket doors & beamed ceilings. 2 hydro meters, gas furnace and A/C. 2 entrances, parking lot, covered porch & more. \$549,000  
MLS# X2091854

© Trademark owned & controlled by The Canadian Real Estate Association used under license