



HaltonHomes.com

905.877.5165 OFFICE

For more info such as floor plans and virtual tours visit www.HaltonHomes.com

Johnson Associates
REAL ESTATE LTD., BROKERAGE



SALES REPRESENTATIVES
John Hill, Glenda Hughes, Matthew Hill, Anita Huggins

OPEN HOUSE SATURDAY 2-4 PM



HERE'S A FANTASTIC OPPORTUNITY!
4901 ERAMOSIA ERIN TOWNLINE, ACTON
Beautifully updated property with a guest house and a sep. heated garage/workshop in addition to the main home which has been elegantly renovated. Lovely perennial gardens. This one is unique!
\$524,000 MLS W2297082 TownlineRoad.ca 12-082

NEW



RAVINE LOT!
16 CEDARVALE CRT, GEORGETOWN
Wonderful home with finished walkout basement. Lots of upgrades including beautiful kitchen. Gate to access ravine.
\$424,900 MLS W2301647 CedarvaleCourt.ca 12-089

NEW



ZONED RESIDENTIAL & COMMERCIAL!
8 GUELPH ST., GEORGETOWN
Great opportunity to own this solid building with lots of character close to downtown Georgetown. Multiple uses possible.
\$525,000 MLS W2302229 MLS W2302256 12-090



OPEN HOUSE SATURDAY 2-4 PM



YOU CAN SEE FOR MILES!
16 TRILLIUM TERRACE, HALTON HILLS
Magnificent views from this elegant home on 1.3 acres. Over 4000 sq. ft. finished on all levels, stunning yard and pool. The modern kitchen offers granite counters, pot lights, built-in oven plus an eat-in area surrounded by breathtaking views! Be in for the summer!
\$1,225,500 MLS W2294594 TrilliumTerrace.ca 12-079



JUST MOVE RIGHT IN!
258 MCDONALD BLVD., ACTON
Lovely two-storey, three bdrm home in immaculate move-in condition. Great location in a popular family-friendly neighbourhood.
\$372,500 MLS W2297089 McDonaldBlvd.ca 12-081



SOLD
5 NAZER STREET, GEORGETOWN



WATERFRONT MODULAR HOME
8 MILLCREEK PARK, PUSLINCH
Well maintained home in the adult lifestyle community of Millcreek Country Club. 2 level deck overlooking water.
\$139,900 MLS X2290017 MillcreekCountryClub.ca 12-069



ELEGANT PARK DISTRICT HOME
7 EDITH ST., GEORGETOWN
Mint condition home features a fabulous renovated kitchen; new main bath; fireplace in living room; 4 bdrms; and a large finished rec room with gas fireplace.
\$739,900 MLS W2285999 EdithStreet.ca 12-056



3.5 FABULOUS ACRES!
13 CEDAR DRIVE, CALEDON
Lovely spacious 4 level backsplit with beautiful views of the surrounding countryside. Kit. has 2 walkouts to cedar deck.
\$729,900 MLS W2276670 CedarDrive.ca 11-299

Elizabeth Doell
Sales Representative
PRESIDENTS (JA) CIRCLE
FIVE STAR (JA) CIRCLE

Johnson Associates
REAL ESTATE LTD., BROKERAGE
905-877-5165
www.lizsellshomes.com
email: edoell@trebnet.com



ONLY ONCE IN A BLUE MOON....
Do you come across a home as fine as this. There is virtually no detail overlooked in this magnificently finished home. Hardwood, granite, views, location! You name it...it's here. 4 + bedrooms, wet bar, games room, dual staircases, gas fireplaces. All this on 2 acres located in a prestigious Glen Williams estate. Contact Elizabeth Doell* for your private viewing today. \$1,349,000.

Thinking of buying or selling?
NOW is the time to ask for your
FREE MARKET EVALUATION



The Presswood Team
never too busy for your referrals
PRESIDENTS (JA) CIRCLE
***** (JA) CIRCLE
*Sales Representative **Broker ***Administrator

Johnson Associates
REAL ESTATE LTD., BROKERAGE
905-877-5165 (24hr) / 1-888-877-5165
www.presswoodteam.com



GREAT FAMILY HOME
Located on desirable street, large yard, garage, very bright and open home with hardwood. \$409,900.

LOCATION! LOCATION! LOCATION!
Rarely offered retail space that is located in the heart of Georgetown retail strip. High traffic location that offers high visibility/exposure w/steady traffic all day long. Call today!!

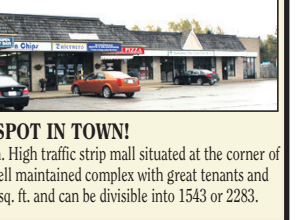


PERFECT LOCK AND LEAVE TOWN HOME
Executive Town Home, granite, hardwood, finished basement. \$499,900.
MLS# W2189181

EXECUTIVE OFFICE SPACE
Great location, high end finishes, perfect location for a professional business!



EXCELLENT INDUSTRIAL UNIT
Office space and lots of warehouse storage for Lease or Sale.



TOP SPOT IN TOWN!
Great location at the heart of Erin. High traffic strip mall situated at the corner of Highway 24 and Main Street. Well maintained complex with great tenants and busy Coffee Time chain. 3826 sq. ft. and can be divisible into 1543 or 2283.

Market is very active, thinking of selling call The Presswood Team today for Free Evaluation