



HaltonHomes.com
905.877.5165 OFFICE
 For more info such as floor plans and virtual tours visit www.HaltonHomes.com



SALES REPRESENTATIVES
 John Hill, Glenda Hughes, Matthew Hill, Anita Huggins



ELEGANT PARK DISTRICT HOME
7 EDITH ST., GEORGETOWN

This mint condition home features a fabulous renovated kitchen; new main bath; fireplace in living room; 4 bdrms; and a large finished rec room with gas fireplace. Huge yard with mature trees, deck, and hot tub.
\$739,900 MLS W2285999 EdithStreet.ca 12-056



IMPRESSIVE 4+1 BEDROOM HOME
5 NAZER ST., GEORGETOWN

Lovely eat-in kitchen with granite countertops and backsplash has walkout to multi-season deck and hot tub. Master with coffered ceiling, 4 pc ensuite and walk-in closet. Wonderful media room with wet bar.
\$642,500 MLS W2285271 NazerStreet.ca 12-054



NEW
YOU CAN SEE FOR MILES!
16 TRILLIUM TERRACE, ACTON
 Magnificent views from this elegant home on 1.3 acres. Over 4000 sq. ft. finished on all levels, stunning yard and pool. Be in for the summer!
\$1,225,500 TrilliumTerrace.ca



3.5 FABULOUS ACRES!
13 CEDAR DRIVE, CALEDON

Lovely spacious 4 level backsplit with beautiful views of the surrounding countryside. Kit. has 2 walkouts to cedar deck. Huge ground level great room with media/office area and bay window. Beautiful views outside every window!
\$729,900 MLS W2276670 CedarDrive.ca 11-299

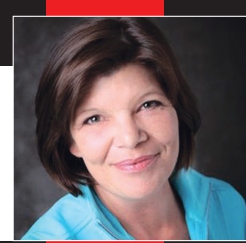


NEW
WATERFRONT MODULAR HOME
8 MILLCREEK PARK, PUSLINCH

Well maintained home in the active adult lifestyle community of Millcreek Country Club. 2 level deck overlooking water. Bright, spacious living areas. Large storage shed/workshop.
\$139,900 MLS X2290017 MillcreekCountryClub.ca 12-069

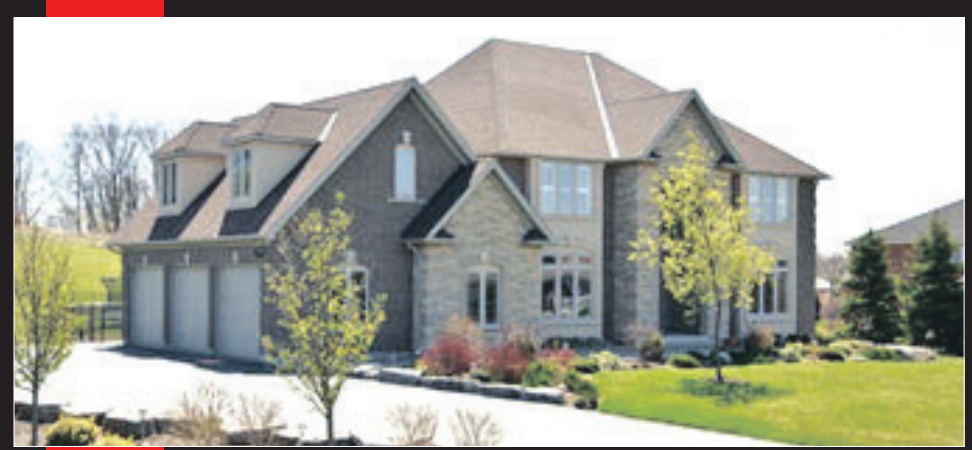


SOLD
73 MARY STREET, GEORGETOWN



Elizabeth Doell
 Sales Representative

Johnson Associates
 REAL ESTATE LTD., BROKERAGE
905-877-5165
www.lizsellshomes.com
 email: edoell@trebnet.com



ONLY ONCE IN A BLUE MOON....

Do you come across a home as fine as this. There is virtually no detail overlooked in this magnificently finished home. Hardwood, granite, views, location! You name it...it's here. 4 + bedrooms, wet bar, games room, dual staircases, gas fireplaces. All this on 2 acres located in a prestigious Glen Williams estate. Contact Elizabeth Doell* for your private viewing today. \$1,349,000.

Thinking of buying or selling?
NOW is the time to ask for your
FREE MARKET EVALUATION



The Presswood Team
never too busy for your referrals
 PRESIDENTS
JA
 CIRCLE
 *Sales Representative **Broker ***Administrator

Johnson Associates
 REAL ESTATE LTD., BROKERAGE
 905-877-5165 (24hr) / 1-888-877-5165
www.presswoodteam.com

OPEN HOUSE SAT. & SUN. 2-4 P.M.
5 ROSEFIELD DRIVE, GEORGETOWN
NEW
GREAT FAMILY HOME
 Located on desirable street, large yard, garage, very bright and open home with hardwood.
\$409,900.

PERFECT LOCK AND LEAVE TOWN HOME
 Executive Town Home, granite, hardwood, finished basement.
\$499,900.
 MLS# W2189181

NEW
LOCATION! LOCATION! LOCATION!
 Rarely offered retail space that is located in the heart of Georgetown retail strip. High traffic location that offers high visibility/exposure w/steady traffic all day long. Call today!!

NEW
LEASED
HIGH TRAFFIC RETAIL
 Located in the heart of Georgetown, across from High School. 1116 sq. ft.
 MLS# W2271093

TOP SPOT IN TOWN!
 Great location at the heart of Erin. High traffic strip mall situated at the corner of Highway 24 and Main Street. Well maintained complex with great tenants and busy Coffee Time chain. 3826 sq. ft. and can be divisible into 1543 or 2283.

GREAT INDUSTRIAL SUITE FOR SALE OR LEASE

NEW
580/526 SQ. FT. RETAIL

NEW
OFFICE SPACE FOR LEASE

NEW
LARGE OPEN OFFICE SPACE

DOWNTOWN PROFESSIONAL OFFICES

Market is very active, thinking of selling call The Presswood Team today for Free Evaluation