

REAL ESTATE

LEADER

**MARIA BRITTO**  
Sales Representative  
905.456.3232  
1.866.251.3232  
maria@maria Britto.com  
www.mariabritto.com  
RE/MAX REALTY SPECIALISTS INC. BROKERAGE

**Bill McKeown**  
Broker  
877-5211  
www.mcqwin.com  
RE/MAX REAL ESTATE CENTRE INC. BROKERAGE

THE LEADING REAL ESTATE PUBLICATION SERVING THE 26,740 HOMES OF HALTON HILLS AND SURROUNDING AREAS • THE INDEPENDENT & FREE PRESS  
CONTACT: SUE SPIZZIRI 905-873-0301 EXT. 234 OR EMAIL REALESTATE@THEIFP.CA



905-877-9001  
**Ray Chesher**  
Holly Light • Jennifer Sarqueant • Karen Pedersen  
\*sales representative



visit often  
**HeyRay.ca**  
... we keep the offers coming!

Working Hard For You. Your REALTOR® For Life



**Denise Dilbey**  
Broker  
Direct: 416-919-9802  
Office: 905-877-8262  
ddilbey@royallepage.ca  
www.ddilbey.com

Offering a complete package of real estate services including  
• free market evaluation • counselling  
• estate planning • investment  
Call me to see how we can customize our services to meet your needs.

"Moving Beyond Expectations"



**ROYAL LEPAGE**  
Meadowtowne Realty, Brokerage  
Independently Owned and Operated



**\$262,900**  
**DREAM CATCHER Erin**  
Ideal starter or investment. 2 bdrm bungalow in a quaint village setting. Main floor living & dining room w/ walkout. Main flr 4 piece bath, laundry & family sized kitchen.  
MLS# X2251050



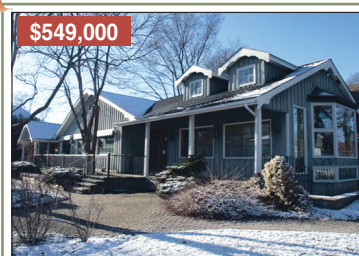
**\$624,900**  
**COUNTRY ELEGANCE Erin**  
3000+ sq ft 3 bdrm 2 storey w/3rd flr loft. Hrdwd flrs, 9 ft ceilings & impressive room sizes all on 2 acres. 4 walkouts. Main flr family rm, laundry & access to 2 car garage.  
MLS# X2231713



**\$2,195,000**  
**FIELD OF DREAMS Milton**  
Totally self sufficient organic 150 acre farm offers professional equestrian operation equipped w/Olympic indoor arena, heated stall barn, bank barn and drive shed. Century home.  
MLS# W2202125



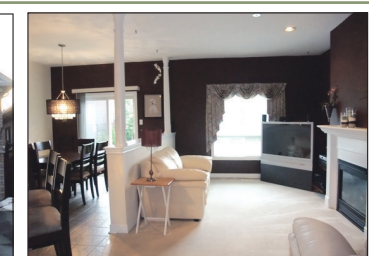
**\$399,900**  
**ONE OF A KIND SCHOOL HOUSE Dufferin**  
Bright & beautiful converted 1872 school house situated on almost an acre lot. Soaring ceilings w/hrdwd flrs accent 2,335 sq ft of living space. 24 x 24 ft double garage. MLS X2264764



**\$549,000**  
**LIVE WORK OPPORTUNITY Rockwood**  
Prime location. Gleaming hardwood floors, 10.8' ceilings, pocket doors and beamed ceilings accent this exquisite property. Zoned for multiple commercial and retail uses. 2 hydro meters, gas furnace and A/C. 2 entrances, parking lot, covered porch and more.  
MLS# X2091854



**\$484,900**  
**1900 SQ FT. BRICK BUNGALOW W/IN-LAW SUITE Georgetown**  
3+2 bdrm w/9 ft ceiling open concept main floor design. Updated kitchen offers a breakfast bar & opens to a family rm w/gas FP. Town approved 2 bdrm In-Law suite. 2 ensuite bathrms w/walk-in showers, corner tubs & 'Jack & Jill' closets complete this 2002 built home. Oversized 2 car garage & 4 car driveway.  
MLS#W2230908



**\$449,900**  
**NEED A HEATED SHOP? Hillsburgh**  
Ready to move in & completely updated brick bungalow on a 66 x 141 ft lot. Main flr family rm walks out. Gleaming hrdwd & slate flrs enrich a bright open concept design. Play in your private hot tub & saltwater pool or work in a heated detached 44ft x 24ft 2 car garage/shop. Plus a 2nd detached 28 x 16 ft Storage shed.  
MLS #X2203649



**\$845,000**  
**5000 SQ FT EXCELLENCE Erin**  
This elegant Executive stone bungalow offers a shop and in-law suite. Value and excellence are top priority in this R-2000 style, 3+2 bdrms home on a 131' x 161' estate lot. Words along can not describe the exquisite finishes, soaring 9+ ft crown moulded ceilings, 8ft tall doorways and gleaming Brazilian cherry & maple flrs. Brazotti kitchen w/granite counters. 2 car garage & detached shop & 2nd driveway.  
MLS# X2210193



**\$2500/MO**  
**IDEAL RENTAL Campbellville**  
Live amongst ponds, mature trees & serenity gardens close to major commuter routes. Bright & spacious open concept w/ soaring vaulted ceilings. Granite kitchen, 3+1 bdrm Finished lower level. 3 Car Garage, Cac, Cvc. Natural Gas Heating. Paved Road. Min 1 Year Lease preferred. Available now. MLS# W2266067

Committed to Residential, Farm and Country Properties - Acton, Amaranth, Brampton, Caledon, East Garafraxa, Eramosa, Erin, Georgetown, Guelph, Halton Hills, Hillsburgh, Milton, Mississauga, Mono Oakville, Orangeville, Rockwood and surrounding areas.

© Trademark owned & controlled by The Canadian Real Estate Association used under license