

iPro Realty is Proud to WELCOME



Evelyn Chaulk
Sales Representative



Professional Grade REALTORS®

iPro Realty Ltd. Brokerage

905-873-6111

1-877-306-IPRO (4776)

iProRealty.com

369 Mountainview Rd. S., Georgetown (in the Metro Plaza)

Six locations to serve you: Toronto, Mississauga, Georgetown, Brampton, Orangeville, Shelburne

\$329,900



NEW PRICE



MUST SEE GEORGETOWN BEAUTY!
3 bedroom townhome on quiet cul-de-sac boasts gorgeous eat-in kitchen with walk-out to deck & fully fenced yard. Oversized living/dining room, master with walk-in closet & semi-ensuite & professionally finished walk-out basement. Upgrades include crown moulding, professionally painted interior & upgraded berber carpeting.

Luisa Boyd
Sales Representative



MOBILE PARADISE IN ERIN!

Pristine property features 2 bedroom, open concept, well maintained modern home. Kitchen with window overlooks living room filled with sunlight from large bay & side windows. Bathroom features modern fixtures & master boasts walk-out to backyard. Please call agent on duty today for more information.



RUSTIC COUNTRY CHARMER!

Open concept 6 bedroom, 4 washroom home sits on 6.5 acres. Inground pool, 6 car garage, & huge heated workshop great for trades or the car enthusiast! Please call agent on duty today for more information.



SEASONAL LIVING

Enjoy the season in this 40' trailer with sunroom situated on a double lot on the water in Mini Lakes Park. Please call agent on duty today for more information.

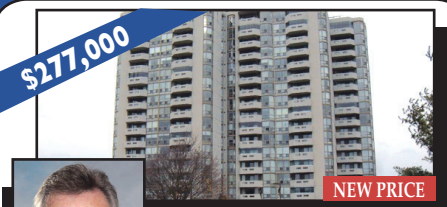


LUXURY SUITES

Live in the prestigious "Sands" and enjoy the pool, hot tub, tennis, bbq, sun deck lounge, patio, exercise room, board room, hobby room, party room, sauna, tanning beds, locker and parking. Please call or email thesandscondo@aol.com



Fred Harrison
Sales Representative



POPULAR 2 BEDROOM MODEL

The Sands 2 bedroom, 2 washroom layout with spacious living area with walk-out to enclosed year round balcony. Ensuite laundry & painted in neutral tones. Call Glenn today to view this home.



Glenn Sproule
Sales Representative

A WINNING COMBINATION

Low interest rates & awesome price for 1800+ sq ft home backing onto woods in Shelburne! Call Helen for more details.



homesbyhelen@hotmail.com



Helen McLean
Sales Representative
Direct Line: 905-691-8934



CUTE BUNGALOW

on a spectacular 1/3 acre wooded lot. Country living close to town. Please call Arlene for view.

homesbyarlene@hotmail.com



Arlene Lindsay
Sales Representative
Direct Line: 905-691-4775



OWN A PIECE OF HISTORY

1879 school house has been lovingly renovated into a 4,400 sq. ft. showpiece. Raised bungalow features cathedral ceilings, hardwood floors, above grade windows & manicured gardens. Property includes new drive shed, two silos & an inground pool. Call Glenn for your private viewing of this home!



Glenn Sproule
Sales Representative



Rui Alves
Broker/Manager



Pat Akers
Sales Representative



Mark Argiriou
Sales Representative



Luisa Boyd
Sales Representative



Roy Brock
Sales Representative



Shelly Butt
Sales Representative



Sandy Byckowski
Sales Representative



Amanda Campbell
Sales Representative



Lisa Campbell
Sales Representative



Mark Campbell
Sales Representative



Liza Carr
Sales Representative



Evelyn Chaulk
Sales Representative



Jason Cole
Sales Representative



Valerie Giorgi
Sales Representative



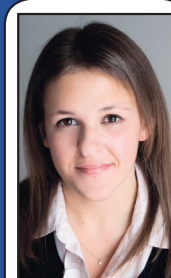
Chantelle Granlund
Sales Representative



Fred Harrison
Sales Representative



Amy Hollohan
Sales Representative



Sara Lajeunesse
Sales Representative



Arlene Lindsay
Sales Representative



Helen McLean
Sales Representative



Jason Peschell
Sales Representative



Glenn Sproule
Sales Representative



Aundene Strauss
Sales Representative



Shenela Tavarayan
Sales Representative



Andrea Trencianska
Sales Representative



Elaine Turkington
Sales Representative



Joanne Vranic
Sales Representative



Steve White
Sales Representative



Ross Wilson
Broker