



HaltonHomes.com

905.877.5165 OFFICE

For more info such as floor plans and virtual tours visit www.HaltonHomes.com



SALES REPRESENTATIVES

John Hill, Glenda Hughes, Matthew Hill, Anita Huggins



**A RARE OFFERING IN THE PARK DISTRICT!
19 MARKET STREET, GEORGETOWN**

Beautifully maintained and upgraded 1800 sq. ft. bungalow on a 70 x 132 ft. lot with established perennials. Master ensuite has corner whirlpool tub with light therapy and thermotherapy. Large addition with bright picture windows. Fully finished lower level.

\$694,900 **MLS W2230215** **Parkdistrict.ca** **11-463**



NEW

OPEN HOUSE SUNDAY 2-4 PM



**MODERN HOME WITH 3 BEDROOMS AND 3 BATHROOMS
31 MOWAT CRES., GEORGETOWN**

Upgraded home with dark hardwood and ceramics on the main level. Walkout from kitchen to huge fenced yard. Master suite with walk-in closet and ensuite.

\$367,500 **MLS W2250691** **Mowatcrescent.ca** **11-492**



**SPACIOUS FAMILY HOME
30 DAVIS CRESCENT, GEORGETOWN**

Wow! This is a great home in a great location. Four bedrooms including large master suite.

\$599,900 **MLS W2246733** **DavisCrescent.ca** **11-488**



**3.5 FABULOUS ACRES!
13 CEDAR DRIVE, CALEDON**

Lovely spacious 4 level backsplit with beautiful views of the surrounding countryside. Kit. has 2 walkouts to cedar deck. Living, dining and family rms plus ground level great room.

\$749,900 **MLS W2141982** **CedarDrive.ca** **11-299**



**GREAT VALUE FOR THIS 2 BEDROOM UNIT!
26 HALL RD., #208, GEORGETOWN**

Big square kitchen with views of the outside from the nice pass through. Lovely L-shaped Living & Dining Room with room for a large table to entertain. The Master Bedroom has a gigantic walk-in closet and ensuite with a walk-in shower stall. Another full bath for guests and a second bedroom.

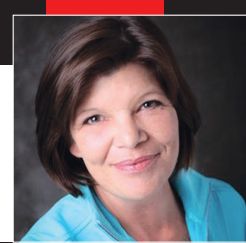
\$229,900 **MLS W2186304** **RoyalAscotClub.ca** **11-158**



**DOWNTOWN GEORGETOWN
OFFICE SPACE**

125 MAIN ST. S., GEORGETOWN
Renovated modern space with true character. Large windows, private entrance and a great layout. Price includes utilities.

\$750.00/MONTH **MLS W2223596** **11-129**



Elizabeth Doell

Sales Representative



Johnson Associates
REAL ESTATE LTD., BROKERAGE

905-877-5165

www.lizsellshomes.com

email: edoell@trebnet.com



ONLY ONCE IN A BLUE MOON....

Do you come across a home as fine as this. There is virtually no detail overlooked in this magnificently finished home. Hardwood, granite, views, location! You name it...it's here. 4 + bedrooms, wet bar, games room, dual staircases, gas fireplaces. All this on 2 acres located in a prestigious Glen Williams estate. Contact Elizabeth Doell* for your private viewing today. \$1,349,000.



The Presswood Team
never too busy for your referrals!

Johnson Associates
REAL ESTATE LTD., BROKERAGE

905-877-5165 (24hr) / 1-888-877-5165

www.presswoodteam.com

OPEN HOUSE SUNDAY 2-4 P.M. ~ 1450 Bishops Gate #406
Directions: Upper Middle and Bishops Gate



PRESTIGIOUS GLEN ABBEY CONDO
Located in prime Oakville location with easy access to shops, parks, recreation facilities, public transit & major highways.
\$232,900
MLS# W2245732



PERFECT LOCK AND LEAVE TOWN HOME
Executive Town Home, granite, hardwood, finished basement.
\$499,900.
MLS# W2189181



NEW PRICE \$484,900

STEWART MILL GEM
Great 4 bdrm home, new concept, hardwood neutral colours.
\$484,900
MLS# W2204162



NEW PRICE \$559,000

RAVINE PROPERTY BACKING ONTO CREDIT RIVER
2 car o/s garage, workshop or home office, hot tub. Beautiful gardens front and back.
\$559,000
MLS# W2167065



NEW

TOP SPOT IN TOWN!
Great location at the heart of Erin. High traffic strip mall situated at the corner of Highway 24 and Main Street. Well maintained complex with great tenants and busy Coffee Time chain. 3826 sq. ft. and can be divisible into 1543 or 2283.



NEW

PROFESSIONAL OFFICE SPACE
Ideal location for medical, business professional located in great plaza anchored by MM Meats, Little Caesars and well established medical and professional offices. 2048 sq. ft., \$13.00
MLS# W2227135



NEW

GREAT INDUSTRIAL SUITE
Centrally located, end unit, offices, kitchen, large roll up door and huge mezzanine.
For Lease.



RETAIL AND OFFICE SPACE
1080 sq. ft., located on corner of Hwy. 7 & Winston Churchill.
\$1500 per month.
MLS# W2225852

Prime Office Space - 2170 sq. ft. divisible | 600 sq ft studio ideal for spinning, yoga and other uses. \$1000 gross