

Continued from pg. 28

Monday, June 6

Evening Bruce Trail Hike: Meet at the Limehouse School parking lot for 6:30 p.m. A level 1 easy hike from the trailhead of the Radial Line Trail into the Limehouse Conservation Area to see the lime kilns and powder house that are being restored along Black Creek. Learn more about the forgotten industry that flourished and was integral to the village of Limehouse in the 1800's. Also a walk on the Bruce Trail through the geological heart of the escarpment at the "Hole in the Wall", a fissure in the escarpment rock. Bring bug repellent. Duration 1.5 hours. Leaders: Janet, 519-853-1285, Kathy, 519-836-9147.

Halton Hills Toastmasters: meets 7:30-9:30 p.m. at St. Alban's parish hall, 537 Main St., Glen Williams. Info: www.haltonhillstm.org.

TOPS-Acton meets Mondays at St. Joseph Church, Church St. E. Weigh-in: 6-7 p.m. Meetings follow until 8 p.m. Info: Jacquie, 519-853-1019.

Celebrate Recovery: Many have experienced freedom through this internationally recognized, Christ-centred 12-step recovery program. All are welcome every Monday night, 7 p.m. at Georgetown Alliance Church. Info: Doug, 905-873-0249 or CR@togetheratgac.com or www.celebraterecovery.ca

Tuesday, June 7

Alzheimer Support group: 7-9 p.m. at the Halton Regional Police Station Community Room, 217 Guelph St. Info: 1-800-387-7127. Open to all family caregivers.

Summer registration: for Library preschool programs at both branches begins June 7 online at www.hhpl.on.ca.

Wednesday, June 8

Esquising Historical Society: Limehouse Presbyterian Celebrates 150 Years — Bill Sanford will lead a tour and a talk about the progress of the congregation since 1861. This meeting will be preceded by our annual potluck dinner. Bring a dish and cutlery for supper or come a little later. The meeting location is at Limehouse Presbyterian Church, Sixth Line at 22 Sideroad. Walk at 6 p.m. followed at 7 p.m. by meeting only.

Silver Wood Women's Institute: meets at Limehouse Memorial Hall at 7 p.m. Info: Hazel Armstrong, 905-877-1325.

Thursday, June 9

Ballinafad Hall Board euchre: at the Ballinafad Community Centre, 7:30 p.m. Cost: \$3 per player.

See **EVENTS**, www.theifp.ca

2011 Hall of Fame Induction Gala

Date: Thursday, June 16, 2011
Location: Christ the King Secondary School



Bob Hooper
Builder Category - Hockey



Bert Zonneveld
Builder Category - Soccer



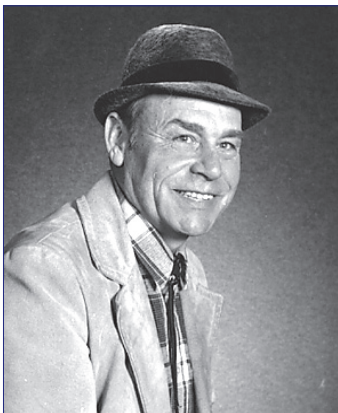
John Dallison
Builder Category - Tennis



Gordon Alcott
Builder Category - Hockey



Clive Llewellyn
Athlete Category - Wrestling



Gerry Inglis
Athlete/Builder Category - Hockey



Bob Goldham
Athlete Category - Hockey



The Ontario Trillium
Foundation is an agency of
the Government of Ontario

Special Guest Speaker:
CLIVE LLEWELLYN



TICKETS \$40 EACH

Join us at the Induction Gala.

6:00 pm - Reception

7:00pm - Induction Ceremony • 9:00pm Congratulatory Reception

Tickets for the Gala ceremony can be reserved through

Glenda Nixdorf at 905-873-1360 or info.hhsm@bell.net