



Martha Summers  
Sales Representative



Betty D'Oliveira  
Sales Representative



Brenda Hamilton  
Sales Representative



**OPEN HOUSE SAT. APRIL 16 & SUN. APRIL 17, 2-4 PM**  
19 VALLEYVIEW ROAD, GEORGETOWN



**PRIME PARK AREA \$529,000**

Great location, quiet street. Well maintained custom stone and brick 3 bedroom home with quality oak kitchen, corian counter, updated windows, Marley roof, interlock drive and more. Irislrwin.com

**OPEN HOUSE SAT. APRIL 16 & SUN. APRIL 17, 2-4 PM**  
38 WATSON ROAD, GEORGETOWN



**MATURE LOT AND THOUSANDS IN UPGRADES**

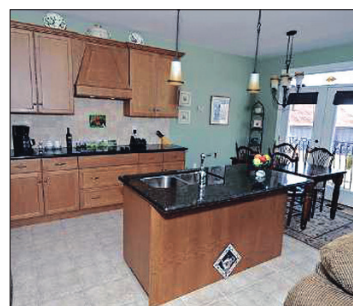
Granite, hardwood, main floor office, finished lower level, French doors, superb open concept kitchen with huge pantry. \$549,000. Irislrwin.com



**NEW**

**EXQUISITE BUNGALOW WITH WALKOUT**

In quaint Aberfoyle just minutes from the 401. Nothing to do! All the Bells and Whistles, granite counters, maple kitchen, 9' ceiling and landscaping. One level living at its finest. \$559,900. Irislrwin.com



**NEW**

**SOLD IN 2 DAYS**

**CUSTOM COUNTRY - MINUTES TO TOWN**

Awesome 1/2 acre mature, private lot. Beautifully appointed home with welcoming foyer and large principal rooms. \$599,000. . Irislrwin.com



**COUNTRY LIVING - GLEN WILLIAMS**

New home to be built by Ricciuto Custom Homes on approx. 2/3 of an acre with lovely views. Choose your own colours and finishes. \$899,000. Irislrwin.com



**DESIGNED WITH DISTINCTION**

Front porch charm in Glen Williams on large lot with views. New home to be built by Ricciuto Custom Homes with quality finishes and your choice of colours. \$949,000. Iris Irwin.com



**NEW PRICE**

**SUPERB ESTATE LOT - APPROX. 4 ACRES**

Last one available on Abbutt Cres. 40 acre private wooded park with hiking trails, creek and pond owned by the residents. Close to Bruce Trail and riding facilities. 10 minutes to Georgetown, Terra Cotta, Erin and 'GO". \$479,000. Irislrwin.com



**PRETTY 3.9 ACRE BUILDING LOT**

Great south Erin location. Westerly views, may be suitable for walkout. Close to Village, skiing and riding facilities. \$249,000. Irislrwin.com



**NEW**



**GLEN WILLIAMS - SUPERB HORSE FACILITY**

Almost 50 acres with 10 stall barn, drive shed, paddocks, bush, creek and views plus 2500 sq. ft. custom bungalow with large principal rooms and walkout lower level. \$1,395,000. Irislrwin.com



**SOLD**

**1 TERRY COURT**



**NEW PRICE**



**PERFECTION PLUS - EXCLUSIVE WILDWOOD ESTATES!!**

Beautifully maintained and updated to perfection. Cherry kitchen, granite counters, porcelain tile floors, walkout from kitchen to a fabulous outdoor living space with large covered verandah and private mature yard. Finished basement with inlaw potential. \$949,000. Irislrwin.com



**SOLD**

**15837 RIVER DRIVE**



**SOLD**

**5881 THIRD LINE**



**NEW**

**SOLD**

**10612 SIXTH LINE**



**SOLD**

**25 OAK RIDGE DRIVE**



**SOLD**

**41 SAMUEL CRES.**



**SOLD**

**31 RUSSELL ST.**



**SOLD**

**6 FOREST RIDGE CRES.**