

**ROYAL LEPAGE**  
**Meadowtowne Realty, Brokerage**  
 Independently Owned and Operated

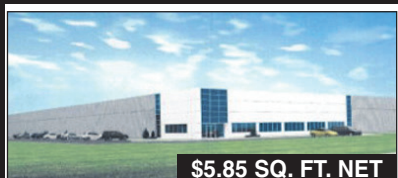
**324 Guelph Street**  
**Georgetown**  
**905-877-8262**

Aeromove aeroplan  
 ASK ABOUT EARNING  
**AEROPLAN MILES**

**Acton**  
**519-853-8467**  
 TOLL FREE:  
**1-866-865-8262**  
**www.meadowtowne.com**



Kate Banks\*



\$5.85 SQ. FT. NET

**INDUSTRIAL 401 CORRIDOR**  
 Peter Scholz\*\*  
[peterscholz@royallepage.ca](mailto:peterscholz@royallepage.ca)



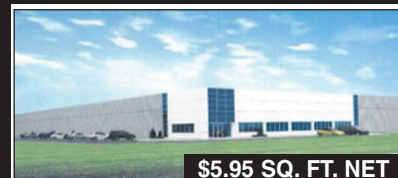
\$849,000

**SPECIAL 9 ACRES & 5 OUTBUILDINGS**  
 Denise Dilbey\*\*  
[www.ddilbey.ca](http://www.ddilbey.ca)



\$1,499,900

**GLEN WILLIAMS ESTATE SUBDIVISION**  
 Lisa Hartsink\*  
[www.lisahartsink.com](http://www.lisahartsink.com)



\$5.95 SQ. FT. NET

**DESIGN BUILD FOR LEASE**  
 Peter Scholz\*\*  
[peterscholz@royallepage.ca](mailto:peterscholz@royallepage.ca)



Susan Lougheed\*



Silvana Bezina\*



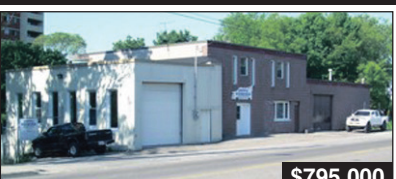
\$849,000

**CUSTOM LOG BUNGALOW ON 14 ACRES**  
 Denise Dilbey\*\*  
 Direct: 416-919-9802



\$1,150,000

**CUSTOM EX ESTATE 48 ACRES ERIN**  
 Barb McLeod\*  
[www.barbarmcleod.ca](http://www.barbarmcleod.ca)



\$795,000

**GUELPH STREET COMMERCIAL**  
 Peter Scholz\*\*  
[peterscholz@royallepage.ca](mailto:peterscholz@royallepage.ca)



\$5.85 SQ. FT. NET

**DIST'N CENTRE 200,000 S.F.**  
 Peter Scholz\*\*  
[peterscholz@royallepage.ca](mailto:peterscholz@royallepage.ca)



Barbara McLeod\*



David Dayman\*



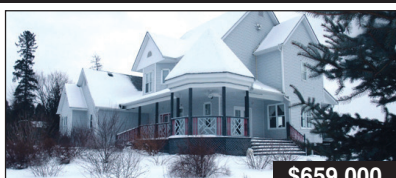
\$2,195,000

**HORSE STABLES & KENNELS ON 150 ACRES**  
 Denise Dilbey\*\*  
 Direct: 416-919-9802



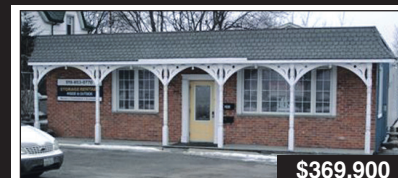
\$579,900

**CUSTOM HOME ON 9.78 ACRES**  
 Silvana Bezina\*  
 Direct: 416-996-7355



\$659,000

**BRIGHT & BEAUTIFUL ON 2 ACRES**  
 Denise Dilbey\*\*  
[www.ddilbey.ca](http://www.ddilbey.ca)



\$369,900

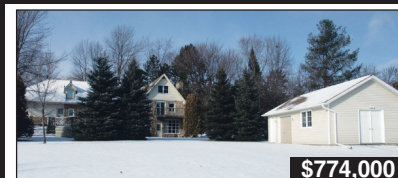
**INDUSTRIAL INVESTMENT**  
 Peter Scholz\*\*  
[peterscholz@royallepage.ca](mailto:peterscholz@royallepage.ca)



Christine Monckton\*



Denise Dilbey\*\*



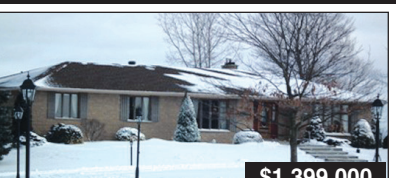
\$774,000

**OFFERS SELF CONTAINED 1200 SQ. FT. OFFICE**  
 Peter Zarins\*  
 Direct: 905-702-4404



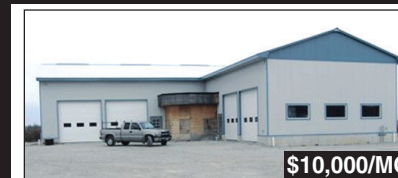
\$799,900

**COME HOME TO THE COUNTRY**  
 Lisa Hartsink\*  
[www.lisahartsink.com](http://www.lisahartsink.com)



\$1,399,000

**80.4 ACRES FLAM. POTENTIAL FOR HORSE FARM**  
 Barb McLeod\*  
[www.barbarmcleod.ca](http://www.barbarmcleod.ca)



\$10,000/MO

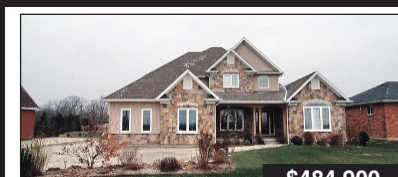
**OPEN STORAGE - 2 ACRES + 2 BLDGS**  
 Peter Scholz\*\*  
[peterscholz@royallepage.ca](mailto:peterscholz@royallepage.ca)



Kati Nuttall\*

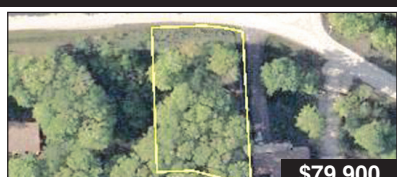


Peter Droog\*



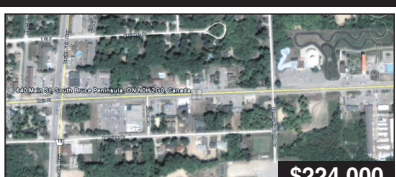
\$484,900

**EXECUTIVE HOME ON 1 ACRE**  
 Lisa Hartsink\*  
[www.lisahartsink.com](http://www.lisahartsink.com)



\$79,900

**FIELD OF DREAMS - COTTAGE COUNTRY**  
 Denise Dilbey\*\*  
 Direct: 416-919-9802



\$224,000

**SAUBLE BEACH COMMERCIAL OPPORTUNITY**  
 Denise Dilbey\*\*  
 Direct: 416-919-9802



\$35,000

**BEAUTIFUL LOTS ON COSTA RICA'S PACIFIC COAST**  
 Silvana Bezina\*  
 Direct: 416-996-7355



Michael & Lynn Oles\*



Lisa Hartsink\*



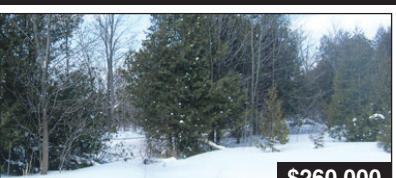
\$569,000

**UPSCALE IN GEORGETOWN SOUTH**  
 Silvana Bezina\*  
 Direct: 416-996-7355



\$595,000

**SPEYSIDE PUBLIC SCHOOL**  
 Peter Scholz\*\*  
[www.peterscholz.ca](http://www.peterscholz.ca)



\$260,000

**PASSION FOR PARADISE - 22 ACRES - CALEDON**  
 Denise Dilbey\*\*  
 Direct: 416-919-9802



\$349,900

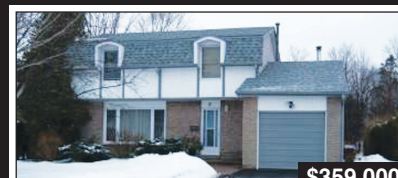
**BUNGALOW WITH IN-LAW SUITE**  
 Lynn Oles\*  
[www.ListWithLynn.ca](http://www.ListWithLynn.ca)



Leslie Powers\*

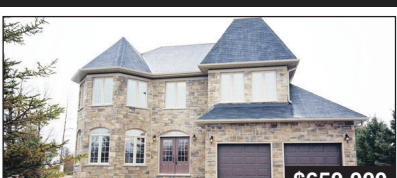


Renee Herrera\*



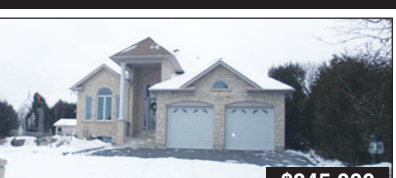
\$359,000

**IT'S WORTH THE DRIVE TO ACTON!**  
 David Dayman\*  
 Direct: 416-526-2789



\$650,000

**CUSTOM BUILT HOME IN BALLINAFAD**  
 Susan Lougheed\*  
 Direct: 905-702-4772



\$845,000

**SUPERIOR QUALITY - CUSTOM BUILT BUNGALOW**  
 Denise Dilbey\*\*  
 Direct: 416-919-9802



\$899,000

**THE IN-BETWEEN GENERATION**  
 Kati Nuttall\*  
 Direct: 905-691-7717



Peter Scholz\*\*



Michael Imrie\*



Heather Thomson\*



Kevin Kennerly\*



Peter Zarins\*

**Helping you is what we do**

\*Salesperson \*\*Broker