

**ROYAL LEPAGE**  
**Meadowtowne Realty, Brokerage**  
 Independently Owned and Operated

**324 Guelph Street**  
**Georgetown**  
**905-877-8262**



**Acton**  
**519-853-8467**  
 TOLL FREE:  
**1-866-865-8262**  
**www.meadowtowne.com**



Kate Banks\*



\$509,900

**RAVINE! RAVINE!**  
**Lisa Hartsink\***  
**www.lisahartsink.com**



\$595,000

**SPEYSIDE PUBLIC SCHOOL**  
**Peter Scholz\*\***  
**www.peterscholz.ca**



\$269,000

**FIRST TIME BUYERS OR EMPTY NESTERS**  
**Tony\* & Carol\*\* Walraven**  
**carolandtony@royallepage.ca**



\$158,000

**STYLISH CORNER UNIT, MOVE IN READY**  
**Jenn Rosart\***  
**Direct: 416-602-8969**



Barbara McLeod\*



Silvana Bezina\*



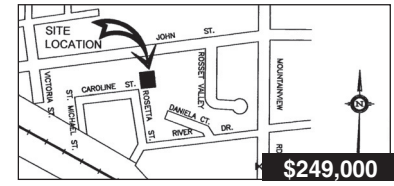
\$1,550/MO

**RETIREMENT COMMUNITY-A MUST SEE**  
**Christine Monckton\***  
**www.christinemonckton.com**



\$5.85 SQ. FT. NET

**INDUSTRIAL 401 CORRIDOR**  
**Peter Scholz\*\***  
**peterscholz@royallepage.ca**



\$249,000

**2 SEPARATE BUILDING LOTS 132 x 132**  
**Denise Dilbey\*\***  
**Direct: 416-919-9802**



\$849,000

**SPECIAL 9 ACRES & 5 OUTBUILDINGS**  
**Denise Dilbey\*\***  
**www.ddilbey.ca**



Christine Monckton\*

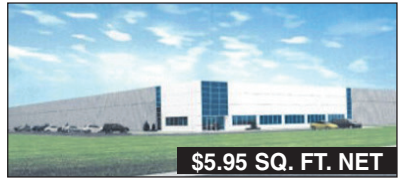


Stuart Colvin\*



\$1,569,999

**GLEN WILLIAMS ESTATE SUBDIVISION**  
**Lisa Hartsink\***  
**www.lisahartsink.com**



\$5.95 SQ. FT. NET

**DESIGN BUILT FOR LEASE**  
**Peter Scholz\*\***  
**peterscholz@royallepage.ca**



\$849,000

**CUSTOM LOG BUNGALOW ON 14 ACRES**  
**Denise Dilbey\*\* & Kate Banks\***  
**Direct: 416-919-9802**



\$1,260,000

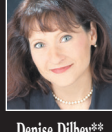
**CUSTOM EX ESTATE 48 ACRES ERIN**  
**Barb McLeod\***  
**www.barbaramcleod.ca**



Kati Nuttall\*



David Dayman\*



Denise Dilbey\*\*



\$795,000

**GUELPH STREET COMMERCIAL**  
**Peter Scholz\*\***  
**peterscholz@royallepage.ca**



\$5.85 SQ. FT. NET

**DIST'N CENTRE 200,000 S.F.**  
**Peter Scholz\*\***  
**peterscholz@royallepage.ca**



\$899,000

**THE IN-BETWEEN GENERATION**  
**Kati Nuttall\***  
**Direct: 905-691-7717**



\$2,195,000

**HORSE STABLES & KENNELS ON 150 ACRES**  
**Denise Dilbey\*\***  
**Direct: 416-919-9802**



Michael & Lynn Oles\*



Peter Droog\*



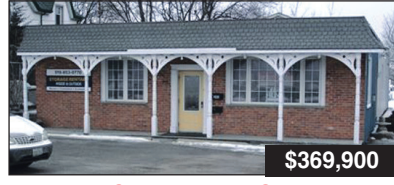
\$579,900

**CUSTOM HOME ON 9.78 ACRES**  
**Silvana Bezina\***  
**Direct: 416-996-7355**



\$659,000

**BRIGHT & BEAUTIFUL ON 2 ACRES**  
**Denise Dilbey\*\***  
**www.ddilbey.ca**



\$369,900

**INDUSTRIAL INVESTMENT**  
**Peter Scholz\*\***  
**peterscholz@royallepage.ca**



\$799,000

**OFFERS SELF CONTAINED 1100 SQ. FT. OFFICE**  
**Denise Dilbey\*\***  
**Direct: 416-919-9802**



Andelka Pejic\*



Lisa Hartsink\*



Renee Herrera\*



\$559,900

**BEAUTIFUL OPEN CONCEPT**  
**Christine Monckton\***  
**Direct: 416-420-6662**



\$819,900

**COME HOME TO THE COUNTRY**  
**Lisa Hartsink\***  
**www.lisahartsink.com**



\$274,900

**CLOSE TO UNIVERSITY**  
**Kati Nuttall\***  
**Direct: 905-691-7717**



\$1,399,000

**80.4 ACRES FLAM. POTENTIAL FOR HORSE FARM**  
**Barb McLeod\***  
**www.barbaramcleod.ca**



Leslie Powers\*



Michael Imrie\*



Kevin Kennery\*



\$395,000

**WELL MAINTAINED LOG HOME WATERFRONT**  
**Tony\* & Carol\*\* Walraven**  
**carolandtony@royallepage.ca**



\$10,000/MO

**OPEN STORAGE - 2 ACRES + 2 BLDGS**  
**Peter Scholz\*\***  
**peterscholz@royallepage.ca**



\$484,900

**EXECUTIVE HOME ON 1 ACRE**  
**Lisa Hartsink\***  
**www.lisahartsink.com**



\$79,900

**FIELD OF DREAMS - COTTAGE COUNTRY**  
**Denise Dilbey\*\***  
**Direct: 416-919-9802**



Jenn Rosart\*



Peter Scholz\*\*



Heather Thomson\*



Carol Walraven\*\* & Tony Walraven\*



Peter Zarins\*

**Helping you is what we do**

\*Salesperson \*\*Broker