

Schools in the holiday spirit



Thirteen-year-old James Gunn spun up a storm of cotton candy during the recent Georgetown Christian School Christmas bazaar. *Photo by Jon Borgstrom*



Students Kyle Morgan (centre) and Joe Uliana of St. Brigid Elementary School in Georgetown present Sandra Melhuish, CEO and executive director of Links2Care Georgetown, with a classroom full of toys this week. It's the fourth straight year that St. Brigid has organized a toy drive for Links2Care, which will use the items for its Holiday Hamper program to help families in need for the holidays. *Photo by Eamonn Maher*

Longest-serving Catholic trustee to serve as school board chair

The longest serving trustee with the Halton Catholic District School Board is once again its chair while a returning trustee is the new vice-chair.

Alice Anne LeMay, an Oakville trustee since 1980, was acclaimed as chair of the board for a one-year term at the trustee inauguration and swearing-in ceremony

held last Tuesday at Holy Trinity Secondary School in Oakville.

Arlene Iantomasi, re-elected in Burlington in the Oct. 25 municipal election, begins her second go-round at the board table as its vice-chair after being acclaimed.

LeMay was nominated for board chair

by new Burlington trustee John Morrison with the motion seconded by longtime Oakville trustee Ed Viana.

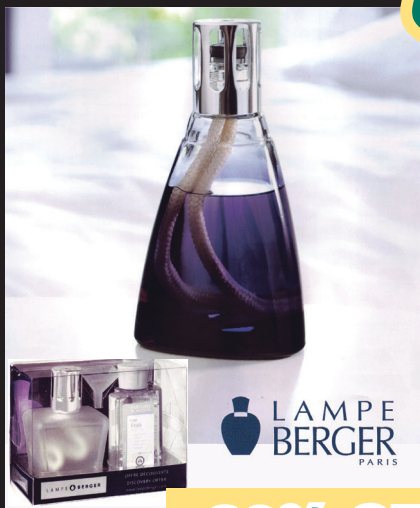
LeMay takes over the chair's role from Burlington's Bob Van de Vrande, who lost his trustee seat to Morrison.

The nine-member slate of trustees for the board is rounded out by newcomers

Mark Rowe (Halton Hills), Paul Marai (Oakville) and Diane Rabenda (Milton).

A brief board meeting was held following the swearing-in with trustees unanimously passing motions related to cheque-signing authority and borrowing and investing resolutions, policies of the former board and the board's by-laws.

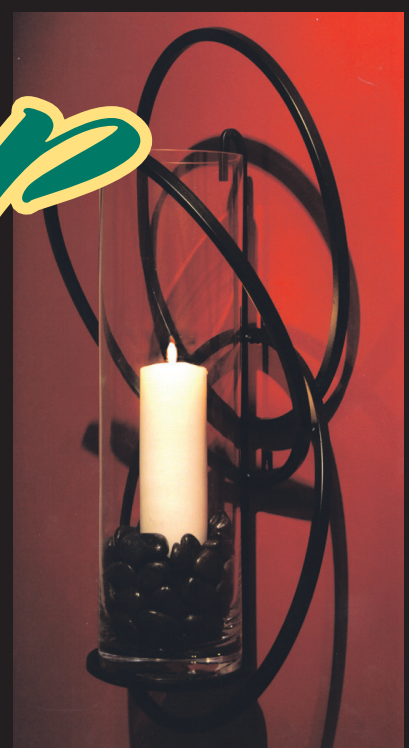
Wrap it up



LAMPE BERGER PARIS



30% OFF CHRISTMAS



Emerald Isle
HOME FURNISHINGS

265 GUELPH ST., GEORGETOWN
905-873-2753 OPEN 7 DAYS A WEEK

SIMMONS
MATTRESS GALLERY