



**ROYAL LEPAGE**  
Meadowtowne Realty, Brokerage  
Independently Owned and Operated

**324 Guelph Street  
Georgetown  
905-877-8262**



ASK ABOUT EARNING  
**AEROPLAN MILES**

**Acton  
519-853-8467**  
TOLL FREE:  
**1-866-865-8262**  
www.meadowtowne.com



royal lepage  
shelter foundation  
AWARD WINNER

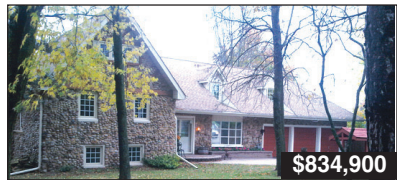


Kate Banks\*



\$649,000

**AN INVITATION TO SPACIOUSNESS**  
Heather Morison\*\*  
Direct: 647-808-1919



\$834,900

**OFFERS SELF CONTAINED 1100 SQ. FT. OFFICE**  
Denise Dilbey\*\*  
Direct: 416-919-9802



\$489,900

**DISTINCT CHARM**  
Denise Dilbey\*\*  
Direct: 416-919-9802



\$15,000

**GREAT BUSINESS OPPORTUNITY/LOW RENT**  
Denise Dilbey\*\*  
Direct: 416-919-9802



Barbara McLeod\*

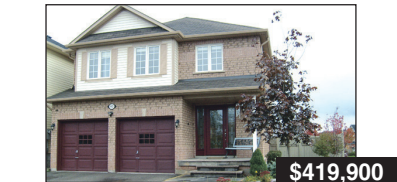


Silvana Bezina\*



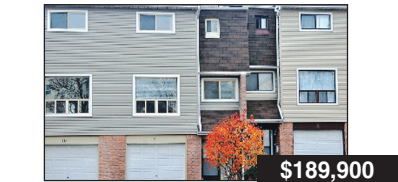
\$1,150/MO.

**ELEGANTLY DECORATED 2 BEDROOM**  
Peter Droog\*  
Direct: 647-282-5010



\$419,900

**UPGRADED & FINISHED TOP TO BOTTOM**  
Susan Lougheed\*  
Direct: 905-702-4772



\$189,900

**AN AFFORDABLE DREAM**  
Lisa Hartsink\*  
www.lisahartsink.com



\$178,900

**GREAT BEGINNINGS**  
Lisa Hartsink\*  
www.lisahartsink.com



Lynn Miron\*

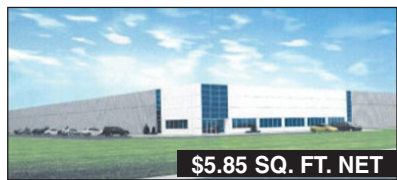


Stuart Colvin\*



\$575,900

**BEAUTIFUL OPEN CONCEPT**  
Christine Monckton\*  
Direct: 416-420-6662



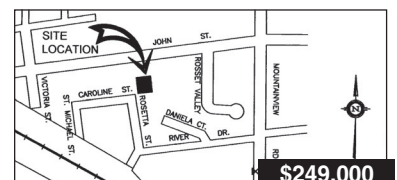
\$5.85 SQ. FT. NET

**INDUSTRIAL 401 CORRIDOR**  
Peter Scholz\*\*  
peterscholz@royallepage.ca



\$289,900

**GREAT FAMILY NEIGHBOURHOOD**  
Kate Banks\*  
Direct: 416-997-4161



\$249,000

**ATTENTION DEVELOPERS**  
Denise Dilbey\*\*  
Direct: 416-919-9802



Christine Monckton\*



David Dayman\*



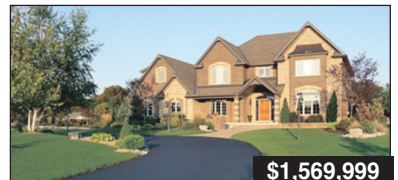
\$284,000

**22.76 ACRES CALEDON BUILDING LOT**  
Len MacIvor\*  
Direct: 416-209-7962



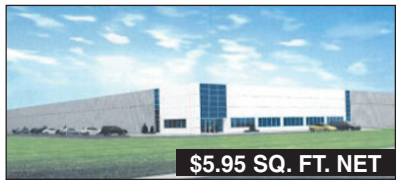
\$849,000

**A HOME FOR ALL SEASONS ON 9 ACRES**  
Denise Dilbey\*\*  
Direct: 416-919-9802



\$1,569,999

**GLEN WILLIAMS ESTATE SUBDIVISION**  
Lisa Hartsink\*  
www.lisahartsink.com



\$5.95 SQ. FT. NET

**DESIGN BUILT FOR LEASE**  
Peter Scholz\*\*  
peterscholz@royallepage.ca



Heather Morison\*\*



Denise Dilbey\*\*



\$849,000

**14 ACRES TOO SPECIAL TO BUILD THE ORDINARY**  
Denise Dilbey\*\* & Kate Banks\*  
Direct: 416-919-9802



\$579,900

**ONE OF A KIND ESTATE HOME IN ERIN**  
Susan Lougheed\*  
Direct: 905-702-4772



\$550,000

**WONDERFUL WATERDOWN BUNGALOW**  
Barb McLeod\*  
www.barbaramcleod.ca



\$1,260,000

**WONDERFUL HORSE PROPERTY IN ERIN**  
Barb McLeod\*  
www.barbaramcleod.ca



Kati Nuttall\*



Peter Droog\*



\$795,000

**GUELPH STREET COMMERCIAL**  
Peter Scholz\*\* & Heather Morison\*\*  
peterscholz@royallepage.ca



\$3,350,000

**72 UNIT APT BLDG., SARNIA**  
Peter Scholz\*\*  
peterscholz@royallepage.ca



\$272,000

**FIRST TIME BUYERS OR EMPTY NESTERS**  
Tony\* & Carol\*\* Walraven  
carolandtony@royallepage.ca



\$564,000

**FAMILY SIZED - QUIET AREA!**  
Denise Dilbey\*\*  
Direct: 416-919-9802



Lynn Oles\*



Lisa Hartsink\*



\$5.85 SQ. FT. NET

**DIST'N CENTRE 200,000 S.F.**  
Peter Scholz\*\*  
peterscholz@royallepage.ca



\$209,900

**LOCATION CAN'T BE BEAT!**  
Lynn Oles\*  
Direct: 905-460-4700



\$227,000

**FANTASTIC LAYOUT**  
Lisa Hartsink\*  
www.lisahartsink.com



\$819,900

**COME HOME TO THE COUNTRY**  
Lisa Hartsink\*  
www.lisahartsink.com



Jenn Rosart\*



Michael Imrie\*



\$209,900

**LOCATION CAN'T BE BEAT!**  
Lynn Oles\*  
Direct: 905-460-4700



\$227,000

**FANTASTIC LAYOUT**  
Lisa Hartsink\*  
www.lisahartsink.com



\$819,900

**COME HOME TO THE COUNTRY**  
Lisa Hartsink\*  
www.lisahartsink.com



Peter Scholz\*\*



Kevin Kenney\*



\$209,900

**LOCATION CAN'T BE BEAT!**  
Lynn Oles\*  
Direct: 905-460-4700



\$227,000

**FANTASTIC LAYOUT**  
Lisa Hartsink\*  
www.lisahartsink.com



\$819,900

**COME HOME TO THE COUNTRY**  
Lisa Hartsink\*  
www.lisahartsink.com



Heather Thomson\*



Susan Lougheed\*



\$209,900

**LOCATION CAN'T BE BEAT!**  
Lynn Oles\*  
Direct: 905-460-4700



\$227,000

**FANTASTIC LAYOUT**  
Lisa Hartsink\*  
www.lisahartsink.com



\$819,900

**COME HOME TO THE COUNTRY**  
Lisa Hartsink\*  
www.lisahartsink.com



Karen Walker\*



Len MacIvor\*



\$209,900

**LOCATION CAN'T BE BEAT!**  
Lynn Oles\*  
Direct: 905-460-4700



\$227,000

**FANTASTIC LAYOUT**  
Lisa Hartsink\*  
www.lisahartsink.com



\$819,900

**COME HOME TO THE COUNTRY**  
Lisa Hartsink\*  
www.lisahartsink.com



Carol Walraven\*\* & Tony Walraven\*\*

**Helping you is what we do**

\*Salesperson \*\*Broker



Peter Zarins\*