

REAL ESTATE

LEADER

PLEASE PACK BEFORE YOU CALL!
GLENN SPROULE
Sales Representative
Direct: 416-553-0054
Office: 905-877-5211
email: gsproule@trebnet.com



Bill McKeown
Broker
877-5211
www.mcqwin.com



THE LEADING REAL ESTATE PUBLICATION SERVING THE 24,950 HOMES OF HALTON HILLS AND SURROUNDING AREAS • THE INDEPENDENT & FREE PRESS
REALESTATE@INDEPENDENTFREEPRESS.COM



OPEN 24/7
HeyRay.ca
Member of Trebnet
Ray Cheshier
905-877-9001
Holly Light • Jennifer Sarqean • Karen Pedersen

unleash the power of your home ... to sell for more!

free home staging
with listing



YourHomeToday
75 Guelph St., Georgetown ON L7G 3Z8
*sales representative



Denise Dilbey
Broker



24 hr paging: 905-877-8262
Toll free: 1-866-865-8262
Direct: 416-919-9802

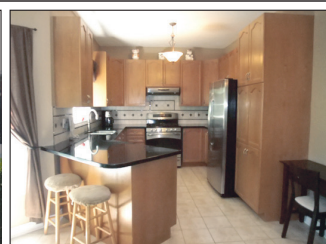
ddilbey@royalpage.ca
www.ddilbey.com

ROYAL LEPAGE
Meadowtowne Realty, Brokerage
Independently Owned and Operated

Top 3% in Canada for Royal LePage (2009)



\$574,000



OPEN HOUSE SAT. & SUN. 2-4 PM
38 CALLAGHAN, GEORGETOWN

FABULOUS FAMILY FRIENDLY NEIGHBOURHOOD

Relax in the privacy of your stately 2700 sq ft 4 bdrm home on a cul de sac style street. Expansive main flr plan w/gleaming ceramic & hrdwd flrs, gourmet kitchen w/granite counters and formal living and dining rooms. Master retreat w/pampering Jacuzzi tub and flr to ceiling glass shower, walk in closet and sitting area. Private treed backyard and professionally landscaped. Walking access to trails, park and pond. MLS# W1902256



\$899,000

PRIVATE 9 ACRE COUNTRY ESTATE - HALTON

A double paved drive leads to an oasis of forest, manicured lawns and a bright and spacious 2,700+ sq. ft 3 bdrm house. Offering endless possibilities are a heated 66x34 ft 5 Car Garage, 2,400 sq ft steel clad Shop/Barn, 45x27 ft Drive Shed and 2 other detached outbuildings to let your imagination run wild. 20 ft x 40 ft heated in-ground pool with gazebo & lights for summer fun and a spring feed pond for a winter hockey rink. Enjoy a private hiking trail through the forest. House heated by propane. AC, CVC, roof (00) & windows (02). Cable & high-speed internet! Quiet paved road. MLS# W1797370



\$874,000

IMPRESSIVE LOG HOME ON 14 ACRES - CAMPBELLVILLE
Bright and spacious custom built 3+1 bdrm Log Bungalow nestled on 14 acres is sure to impress you. Professional landscaped grounds finished with interlocking walk ways are complemented with an open concept design interior w/granite kitchen. The bright and spacious finished basement offers large above grade windows and more living space. Access to oversized 3 car garage & heated 2 car garage with lots of outside room for toys. Heated by natural gas and High speed internet. MLS# W1854677



NESTLED IN THE FOREST - HALTON

3 Bdrm 3 Bath updated Bungalow nestled on a private 4 acre wooded lot. Open concept main flr design & walk out to large deck is ideal for entertainers. Updated Kitchen w/SS Appliances offers everything for a gourmet cook. Woodburning fireplace adds warmth to a large living room. Mstr ensuite and walk out to private balcony. Almost finished walk out basement gives more living space w/potential for a bright & spacious In-Law suite. 2 Car Garage w/ Interlock Driveway. Too many updates to list.



\$369,900

MODERN DECOR - QUICK CLOSING AVAILABLE

This is an amazing Price with no disappointments for this beautiful, modern, all brick, 3 bdrm, 3 bath executive home. Stunning, bright and spacious open concept floor plan is accented w/roman pillars, hrdwd flrs, and tasteful finishes. Upgraded Kitchen offers generous eat-in area and walk out. Mstr retreat w/ oversized ensuite. Detached 2 car garage and too many upgrades to list. Ideal location within minutes to Georgetown South, shops, schools, parks and Tim Hortons.



\$449,000

ONE OF A KIND ON 10 ACRES - MILTON

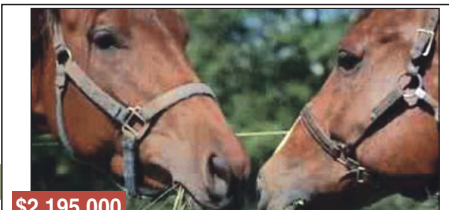
Don't miss out on this once in a life time opportunity to complete this home stately open concept 6 bdrm 5000 sq ft home (all above grade) under construction since 1974 (approx 60% complete) waiting for your personal touches. Nestled on 10 Acres of lush forest and spring feed pond. Desirable North Milton location on paved road. Bring your imagination, designs and estimated \$275K to complete. 400 amp hydro service. Call for more details. MLS# W1871274



\$579,900

EXECUTIVE STYLE AND FLARE - ERIN

Charleston built home with finished walk out basement on an enclave of executive homes. Soaring ceilings, open concept design and walk out w/ stunning hill top views are perfect for any entertainer. Family sized kitchen with breakfast bar. Luxurious Mstr 6 pc ensuite and walk in closet. Finished lower levels offer 2 bdrms, family room and equipped w/kitchenette perfect as a suite for teens or nanny. This home is a must see!



\$2,195,000

DREAM CATCHER - MILTON

Rare 150 Acre Equestrian Farm offering a totally self sufficient operation and business investment. Caters to all riding disciplines with room for expanding to more than 25 horses and 200x80 indoor arena. Dressage, jumping and lunges rings plus cross country trails. Self producing organic crops and hay. Plus detached Bank barn and drive shed. Includes renovated 3 bdrm farm house.



\$249,000

BUILDING LOTS

Medium density commercial / residential lands available for development under the proposed amendment to the Town's official plan. Offers 2 separate deeded lots of 66ft x 132ft . Site ideally suits a duplex/triplex or multiple dwellings. Vendor may consider VTB mortgage to qualified buyers. Call today for more information and details.



\$284,000

22 ACRE BUILDING LOT - CALEDON

Build your dream home on a little piece of heaven with nature and wildlife at your doorstep yet on a paved road close to shops, schools, trails and towns. Mixed forest and lush meadows make it ideal for your recreational pleasure. Driveway and culvert already installed. Conservation authority has established 2 proposed building sites.

Proudly serving Residential, Farm and Country Properties - Acton, Caledon, Eramosa, Erin, Georgetown, Guelph, Halton Hills, Hillsburgh, Milton, Oakville, Mono, Orangeville, Rockwood and surrounding areas.

"Moving Beyond Expectations"