



Martha Summers
Sales Representative



Betty D'Oliveira
Sales Representative

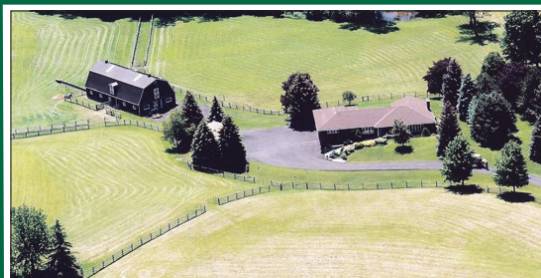


Brenda Hamilton
Sales Representative

SEE VIRTUAL TOURS AT
IRISIRWIN.COM

905-877-5165

20+ Years of REAL ESTATE Experience



ALMOST 50 ACRES ON THE EDGE OF GLEN WILLIAMS!

Sprawling bungalow, 10 stall barn, paddocks, drive shed, 3-car garage and amazing views. \$1,575,000. Irislrwin.com



SUPERB BUNGALOW \$344,900

Shows like a model home. Outstanding lower level with gorgeous gas fireplace and large above grade windows. Bright eat-in kitchen with walk-out. Irislrwin.com

OPEN HOUSE SUNDAY JUNE 27 ~ 2-4 p.m.
10469 SIXTH LINE, GEORGTOWN



COUNTRY CLOSE TO TOWN - \$599,000



SPOTLESS 4 BEDROOM + LOFT!

Great family home with new granite kitchen on quiet crescent. Shows superb! French doors, main floor family room & laundry, shingles 2010. Just move in! \$489,000. Irislrwin.com



EXECUTIVE HOME IN THE PARK

Superb large mature, private lot with inground pool. Beautiful updated kitchen with walkout to deck and pool, gleaming hardwood, 4 spacious bedrooms and finished lower level. \$589,000. Irislrwin.com



RESORT LIKE YARD - IN GROUND POOL

Bright open concept floor plan, gorgeous granite kitchen open to family room with gas fireplace and views of the yard. Outstanding lower level. Gorgeous yard with cedar cabana. \$545,000. Irislrwin.com



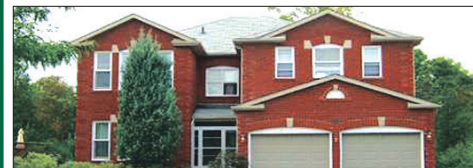
6.5 ACRE COUNTRY RETREAT

Views over fabulous spring fed pond and hobby vineyard from a sun-filled spacious and gracious home with lower level at walkout. \$799,000. Irislrwin.com



PRIME PARK AREA \$559,000

Great location, quiet street. Well maintained custom stone and brick 3 bedroom home with quality oak kitchen, corian counter, updated windows, Marley roof, interlock drive and more. Irislrwin.com



SPACIOUS AND GRACIOUS ON RAVINE

Fabulous floor plan - 3330 sq. ft! Wow kitchen/family room combo with soaring ceiling and walkouts to deck with views over gorgeous ravine lot. Lower level at walkout!! \$699,000. Irislrwin.com



GLEN WILLIAMS - HUGE LOT

Lovely setting! 3 bedroom home with large updated eat-in kitchen open to family room. Walk to Artisan's Village, Credit River and more. \$319,000. Irislrwin.com



CENTURY HOME/HOBBY FARM

Well set back on approx. 3+ acres. Lovingly maintained and updated with lots of original charm. Country close to town!! \$579,900. Irislrwin.com



2+ ACRES WITH POND

Gorgeous totally renovated open concept home with fabulous kitchen, gleaming hardwood floors and private mature lot. \$508,900. Irislrwin.com



ERIN - 98 ACRE FARM, 1 ACRE LOT

Fabulous views, good crop land, 12+ acres wetland. A great country escape. \$800,000. Lot \$170,000. Both only 45 minutes from Toronto. Irislrwin.com



2 ACRE BUILDING LOT

Lovely country lot in great Erin location. High and dry and just waiting for your dream home. \$189,500. Irislrwin.com



5 ONTARIO STREET

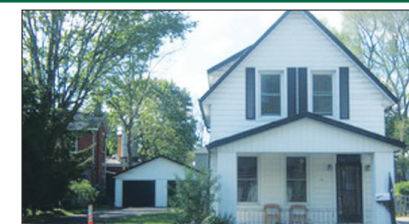


28 SPROWL STREET



TORONTO - LOTS OF CURB APPEAL

Lovingly maintained 3 bedroom raised bungalow on large mature lot. Bright spacious lower level. \$495,000. Irislrwin.com



DOWNTOWN GUELPH

Great century home updated with beautiful hardwood. 2 car detached garage on huge mature lot. \$299,900. Irislrwin.com



504 MAIN STREET



59 MAPLE AVENUE



102 SNOWBERRY CRES.



1443 MILL STREET



18 VISTA GREEN CRES.