



Dive

The automatic pool cleaner, a worthwhile luxury!

In order to make the most of your pool, how about treating yourself to an automatic pool cleaner? It will clean your entire pool while saving you a lot of time and work.

There are two types of these cleaners: one which works by suction and the other which works by pressure. They are either automated or electric. Some models include brushes which can clean the liner as well as vacuuming up any debris.

Suction-side models are connected directly to the skimmer so any debris is collected there. As they work directly with the pool's filtration system, it is important to do a backwash before using it in order to ensure good suction. Because it moves at random, it is recommended for regular shaped pools without a lot of nooks and corners.

The pressure-side models work with high water pressure. They may include a booster pump. If this is the case, the electric booster pump is connected to the filtration system which provides the energy to drive the cleaner around the pool. On the other hand, the automatic cleaner without a booster pump is connected directly to the pool pump which provides the necessary water pressure. In both cases, the water pressure also drives impurities into a special filtration bag which must be replaced on a regular basis. Pressure-side models work

very efficiently with small debris but are not entirely autonomous as they sometimes need to be moved manually.

More recent innovations include automatic leaf skimmers which float on the surface and pick up any floating debris. This would be a marvellous acquisition if your pool is surrounded by trees!

With an automatic pool cleaner you can finally enjoy a spotless pool without having to spend hours cleaning it!



Daily maintenance... for perfect water

You've just purchased a pool and you've forgotten some of the advice given to you by your salesperson regarding daily maintenance procedures? Don't worry; here are a few tips to help you remember!

First of all, try and establish a daily maintenance routine; this will turn into a habit which you won't forget. After all, it would be a pity to spoil your swimming because of negligence! The evening is the best time of day to check your water. Because chlorine loses its effectiveness in the sun and because it is harmful to the skin (and swimwear!), it is always recommended to add chlorine when swimming is finished for the day. This will also maximize its efficiency.

When using chlorine it is always better to add a small amount on a daily basis. Chlorine content should be around 0.5 and 1.5 mg/litre, that is 0.3 ppm. After adding chlorine, check the pH. The ideal level should be around 7.6, although a pH between 7.2 and 7.8 is acceptable. A helpful tip: chlorination is more efficient if the pH is low. Over a level of 7.8, chlorine has virtually no effect.

Too much chlorine is extremely harmful to



Try and establish a daily maintenance routine to keep your pool beautiful all summer long!

all your pool equipment as well as to the liner of your pool. High chlorine and/or pH are a major cause of premature ageing of your pool and your filtration equipment. It encourages osmosis, porosity, cracking and discoloration of the pool liner.

Your final daily task will be to install the solar cover or blanket on your pool every evening, thus preventing heat loss in the cool night air. This cover can be left in place on cooler days but it is important to remove it after a couple of days to avoid the formation of algae.



Wilson
POOL & HOT TUB

See us for all
your
**POOL &
HOT TUB
SUPPLIES**

• Chemicals • Equipment • Service

55 Sinclair Ave., Georgetown
905-873-8355

SHOP LOCAL
SHOP SMART... SHOP HALTON HILLS

Zero Carbon Foot Print

Eliminates costly pool heating bills

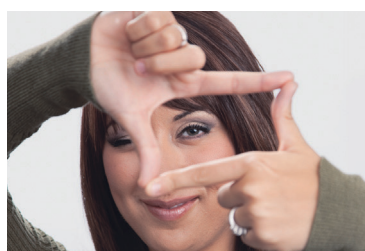


Call the solar pool heating professionals or consult our web site for a dealer near you

GO SOLAR

Go-Solar a name you can trust
Established 1999 • Made in Canada

www.go-solar.ca
905-873-4075



Picture yourself shopping at our local merchants

SHOP SMART... SHOP HALTON HILLS



SHOP LOCAL
SHOP SMART... SHOP HALTON HILLS

... it's smart to
shop local.

THE INDEPENDENT
& FREE PRESS
YOUR COMMUNITY NEWSPAPER
905.873.0301