



Martha Summers
Sales Representative



Betty D'Oliveira
Sales Representative

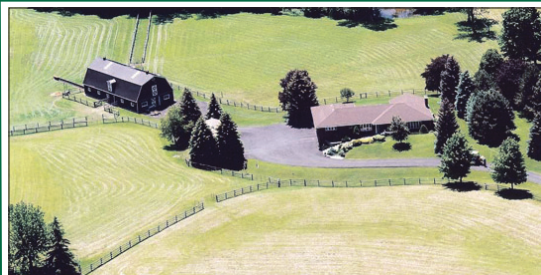


Brenda Hamilton
Sales Representative

SEE VIRTUAL TOURS AT
IRISIRWIN.COM

905-877-5165

20+ Years of REAL ESTATE Experience



SPECTACULAR ON THE EDGE OF GLEN WILLIAMS!

Sprawling bungalow, 10 stall barn, paddocks, drive shed, 3-car garage and amazing views. \$1,575,000. Irislrwin.com



NEW

GRANITE! GRANITE! GRANITE!

Open concept boasting granite in kitchen & 3 bathrooms! Maple hardwood, bonus room and superb finished rec room - Stunning home! \$449,000. Irislrwin.com

OPEN HOUSE Sat. & Sun. May 29th & 30th ~ 2-4 p.m.
102 Snowberry Cres., Georgetown



NEW

OPEN CONCEPT 4 BEDROOM SEMI! \$389,000



SPACIOUS AND GRACIOUS ON RAVINE

Fabulous floor plan - 3330 sq. ft! Wow kitchen/family room combo with soaring ceiling and walkouts to deck with views over gorgeous ravine lot. Lower level at walkout!! \$699,000. Irislrwin.com



GLEN WILLIAMS - HUGE LOT

Lovely setting! 3 bedroom home with large updated eat-in kitchen open to family room. Walk to Artisan's Village, Credit River and more. \$319,000. Irislrwin.com



2+ ACRES WITH POND

Gorgeous totally renovated open concept home with fabulous kitchen, gleaming hardwood floors and private mature lot. \$508,900. Irislrwin.com



QUIET CRESCENT LOCATION!

Beautifully presented with granite kitchen, neutral decor, open concept main floor family room w/fire-

place. Above ground pool and mature lot! Great family home on superb street! \$489,000. Irislrwin.com



PRIME PARK AREA \$559,000

Great location, quiet street. Well maintained custom stone and brick 3 bedroom home with quality oak kitchen, corian counter, updated windows, Marley roof, interlock drive and more. Irislrwin.com



RARE 'PARK' AREA OFFERING

Walkout from dining room to 3 season sunroom & deck overlooking large mature yard. Well maintained 4 bdrm home decorated in neutral tones. \$399,900. Irislrwin.com



6.5 ACRE COUNTRY RETREAT

Views over fabulous spring fed pond and hobby vineyard from a sun-filled spacious and gracious home with lower level at walkout. \$799,000. Irislrwin.com



DOWNTOWN GUELPH

Great century home updated with beautiful hardwood. 2 car detached garage on huge mature lot. \$299,900. Irislrwin.com



NEW PRICE

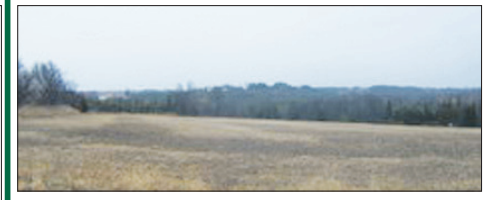
CENTURY HOME/HOBBY FARM

Well set back on approx. 3+ acres. Lovingly maintained and updated with lots of original charm. Country close to town!! \$579,900. Irislrwin.com



2 ACRE BUILDING LOT

Lovely country lot in great Erin location. High and dry and just waiting for your dream home. \$189,500. Irislrwin.com



ERIN - 98 ACRE FARM, 1 ACRE LOT

Fabulous views, good crop land, 12+ acres wetland. A great country escape. \$800,000. Lot \$170,000. Both only 45 minutes from Toronto. Irislrwin.com



NEW

SOLD

21 HARDING STREET



SOLD

48 WYLIE CIRCLE



SOLD

3 STEWART MACLAREN RD.



NEW

SOLD

504 MAIN STREET



SOLD

59 MAPLE AVENUE



SOLD

157 RAYLAWN CRES.



SOLD

26 HALL ROAD



NEW

SOLD

1443 MILL STREET



NEW

SOLD

18 VISTA GREEN CRES.