

Tuesday, May 25, 2010

12 Pages

REAL ESTATE

LEADER



**PLEASE PACK BEFORE YOU CALL!**  
**GLENN SPROULE**  
 Sales Representative  
 Direct: 416-553-0054  
 Office: 905-877-5211  
 email: gsproule@trebnet.com



**Bill McKeown**  
 Broker  
 877-5211  
 www.mcqwin.com  
 RE/MAX REAL ESTATE CENTRE INC., Brokerage

THE LEADING REAL ESTATE PUBLICATION SERVING THE 24,950 HOMES OF HALTON HILLS AND SURROUNDING AREAS • THE INDEPENDENT & FREE PRESS  
 REALESTATE@INDEPENDENTFREEPRESS.COM



OPEN 24/7  
**HeyRay.ca**  
 Member of Team  
**Ray Cheshier**  
 905-877-9001  
 Holly Light • Jennifer Sarqean • Karen Pedersen

unleash the power of your home ... to sell for more!

free home staging  
 with listing



**YourHomeToday**  
 75 Guelph St., Georgetown ON L7G 3Z8  
 \*sales representative



**Denise Dilbey**  
 Broker  
 5 Minute Call Back Policy

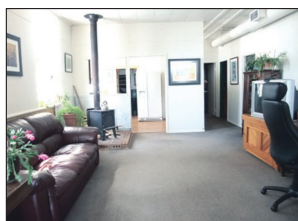
24 hr paging: 905-877-8262  
 Toll free: 1-866-865-8262  
 Direct: 416-919-9802  
 ddilbey@royalpage.ca  
 www.ddilbey.com

**ROYAL LEPAGE**  
 Meadowtowne Realty, Brokerage  
 Independently Owned and Operated

Top 3% in Canada for Royal LePage (2009)



\$284,000

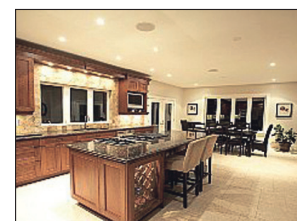


**BRING YOUR INSPIRATION — 1873 SCHOOL HOUSE - ERIN**

Converted in the 60's, this all brick 1,400 sq. ft. 3 bdrms home gives you an open concept living/dining w/wood stove, 9.6ft ceilings, 4 pc bath w/Jacuzzi tub & main floor laundry. Nestled on a mature treed 165' x 115' lot on paved road. Offers Tremendous Potential w/many original features and updated septic, hydro & forced air furnace. Detached shed for more storage and double driveway for 4+ cars. MLS# X1801078

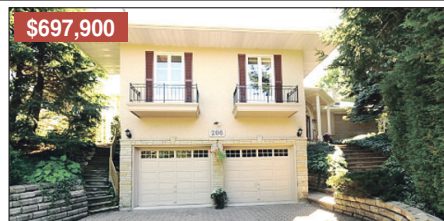


\$1,199,000



**HOME OF DISTINCTION 10 ACRES R-2000 INSPIRED 4+1 BDRM HOME**

w/fin'd walk-out bsmt offering a total of 5,000 sq. ft of luxurious living space w/spectacular hilltop views. Sun filled rms, w/ Jatoba hrdwd & travertine flrs. Stunning gourmet cherry kitchen w/granite island & counters and prof. grade SS built-in appl's, WI pantry & walk-out to private balcony — a haven for entertaining. King-sized master. Main flr laundry. BI Lawn Sprinkler sys, CAT5 and integrated speaker system. This is Country living at it's best. Paved Rd. MLS# W1828279



\$697,900



**HIDDEN GEM WITH A MILLION DOLLAR VIEW**

Walk to downtown Georgetown. Once in a lifetime does a property present itself with magnificent views like this — fit for weddings/family reunions on a 145 x 124 ft lot. Gleaming hrdwd flrs and granite kitchen counters are only a few benefits offered in this stately updated 3 bdrm bungalow. Wall of windows enhance the Sunroom overlooking the Ravine. Bright and spacious main floor family. Formal living/dining rooms. 2 car garage. A must see! MLS# W1853365



\$874,000



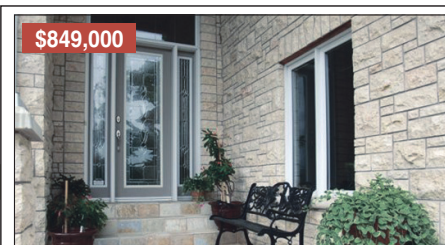
**LOG HOME ON 14 ACRES - CAMPBELLVILLE**

Hidden from the road this 3+1 bdrm custom built White Pine Log Bungalow w/open concept design has vaulted ceilings thru-out & kitchen w/granite countertop. Completely fin'd lwr lvl w/sep. entrance. Forest & ponds. A3 zoning allows for many home based business and ideal for anyone needing room for toys. 3 car & heated 2 car garage are perfect year round shops. Natural gas & hi-speed internet. Paved rd. MLS# W1854677



\$949,000

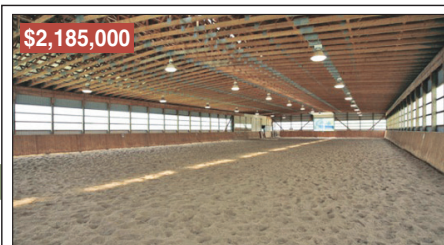
**ENDLESS POSSIBILITIES W/5 OUTBUILDINGS ON 9 ACRES**  
 Offers so many opportunities and uses on a private 9 acre lot. Double paved drive leads to 2,700+ sq. ft, 3+1 bdrm Spanish inspired home with walk-out bsmt. Heated 5 and 2 car garages, 2,400 sq. ft Barn, 2 Drive Sheds, Pond and heated in-ground Pool. Paved rd. MLS# W1797370



\$849,000

**MASTERPIECE — BALLINAFAD**

Superb 3+2 bdrm stone bungalow. Soaring 10'+ ceilings, 8' high doorways, crown moulding with only granite, ceramic & hrdwd flrs throughout! Generous cherry kitchen w/granite counter & fin'd lwr lvl w/a large summer kitchen fit for In-laws. 3+1 car garages. Private .51 acre lot. MLS# W1826879



\$2,185,000

**IT'S ALL ABOUT HORSES — 150 ACRE FARM**

Totally self sufficient farm set up for any riding discipline. Truly state-of-the art facilities. Olympic-sized indoor arena, 25 box stalls w/2 wash & 5 grooming stalls. 10 paddocks. 50 acres in pasture & 50 acres of trails. Updated 1,800 sq. ft, 3 bedroom residence. MLS# W1706662



**BEAT THE HST - VACANT BUILDING LOTS**

**CALEDON** - 22 acres - Once in a lifetime opportunity to own a little piece of heaven with nature and wildlife at your doorstep. Ideal for recreational hunting or pleasure.  
**GEORGETOWN** - \$284,000 - An ideal location for future medium density for duplex/triplex dwellings or commercial/residential. 2 sep. deeded lots, total of 132 ft x 132 ft. \$249,000

Proudly serving Residential, Farm and Country Properties - Acton, Caledon, Eramosa, Erin, Georgetown, Guelph, Halton Hills, Hillsburgh, Milton, Oakville, Mono, Orangeville, Rockwood and surrounding areas.

"Moving Beyond Expectations"