

HaltonHomes.com
Matthew Hill • Glenda Hughes • John Hill
Sales Representatives
 Johnson Associates REAL ESTATE LTD., BROKERAGE
 www.HaltonHomes.com 905.877.5165

For more information such as floor plans and virtual tours visit www.HaltonHomes.com



FIRST TIME OFFERED ~ PARK DISTRICT RAVINE HOME



Stunning home, with all the bells and whistles. Beautiful eat-in kitchen with granite countertops; island with breakfast bar, plus an eat-in kitchen that walks out to the glorious ravine yard and inground pool. Four big bedrooms; Master with ensuite and fireplace, plus office and bedroom downstairs. Main floor family room with gas fireplace and California shuttered windows that overlook extraordinary views of manicured gardens. Gleaming hardwood flooring on main level with decorator colours throughout. The lower level has an entertainer's dream bar and large games room. Recently upgraded decking; roof; and all new top of the line windows throughout. This house takes your breath away. Call Glenda Hughes 905-877-5165 to view this honey of a home in one of the nicest areas of Georgetown. **\$925,000.**

List with Bill & Lia McNally *Sales Representatives

- Outstanding Service & Results
- Many references from Satisfied Clients
- Free Market Evaluations and advice

905-877-5165 Johnson Associates REAL ESTATE LTD., BROKERAGE

Search all local listings at www.willsell.ca



\$334,900 **NEW LISTING**

OPEN HOUSE SUNDAY 2-4 P.M.
52 Doctor Moore Court, Acton

Beautifully decorated bungalow with finished basement!
 Great curb appeal • Set on quiet street close to park • Glassed in front porch • Modern kitchen overlooking living room • Glossy, light coloured hardwood flrs • Large windows fill home w/natural light • Walk thru patio drs to deck in yard • Enjoy the privacy of no neighbours behind! • Semi fin bsmt boasts a lrg rec room, 3rd bedroom & bath with shower - great for a teen or guest! • Cold cellar • See virtual tour at www.willsell.ca and call Bill McNally to book your showing!

\$519,900

SOLD in competition

30 FORSTYH, GEORGETOWN

1ST AD

SOLD in 2 days in competition

28 MAPLE AVE., GEORGETOWN

The MAAN Team
The Best Move You'll Ever Make!



Emma Fedor
 *Sales Representative

You Can't Go Wrong When You have The Right MAAN For The Job

www.TheMaan.Ca
905-877-5165

Johnson Associates
 REAL ESTATE LTD., BROKERAGE



Mary Maan
 *Sales Representative



Unit. Spacious and bright open concept floor plan, 2 large bdrms both with ensuite baths and 2 pc powder rm. Outstanding kit. with upgraded cabinets & granite countertops, 9'6" ceilings, crown moulding, hardwood floors in living room and dining room, gas fireplace, newer broadloom in master and good sized office or den. Huge tiled 32 foot balcony.

THIS IS THE ONE YOU HAVE BEEN WAITING FOR!

The largest unit in the building and finished to perfection! Highly Sought After Victoria Gardens Penthouse



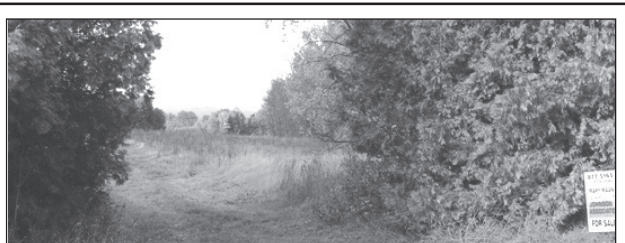
GREAT 2 STOREY FAMILY HOME IN PARK DISTRICT'S "MARYWOOD MEADOWS"
 3+1 Bedrooms, 4 bathrooms, formal LR/DR combination, family room with walkout to large deck and Japanese Gardens. Newer metal roof, furnace, air condition all newer maintenance free windows and doors.

COMING SOON



BEAUTIFUL BRIGHT 2 BDRM, 3 BATHROOM UNIT
 Large windows and great views overlooking the treed grounds and gardens. Private and secluded location within walking distance to park district and all downtown amenities. Master has 4pc ensuite w/separate shower, 2 mirrored closets. Living room boasts engineered hardwood floors, built in floor to ceiling bookcase, gas fireplace and walk out to tiled balcony. All windows fitted with California shutters. This unit is a must see! Call Mary or Emma to view.

SOLD



PICTURE PERFECT LOCATION \$230,000
 Are you looking for the perfect spot to build your new home? How does 5-1/4 acres with a tree lined perimeter for your privacy close to trails in the picturesque rolling terrain of Hillsburgh sound? 5 minutes to Hillsburgh shopping, 10 mins to Erin Village. Call Mary* or Emma* to view.
 10-104-91

SOLD