

ROYAL LEPAGE
Meadowtowne Realty, Brokerage
 Independently Owned and Operated

324 Guelph Street
Georgetown
905-877-8262

Aeromove aeroplan
 ASK ABOUT EARNING
AEROPLAN MILES

Acton
519-853-8467
 TOLL FREE:
1-866-865-8262
www.meadowtowne.com



Kate Banks*



\$599,900

HILLSIDE HOME ON 12 TREED ACRES
 Susan Lougheed*
 Direct: 905-702-4772



David Baptie*



\$1,049,000

CUSTOM BUNGALOW ON 38 PRISTINE ACRES
 Michael Imrie*
 Direct: 416-318-7167



Stuart Colvin*



\$5.85 SQ. FT. NET

DIST'N CENTRE 200,000 SF
 Peter Scholz**
 peterscholz@royallepage.ca



\$293,000

BRIGHT AND SPACIOUS BUNGALOW
 Peter Zarins*
 Direct: 905-702-4404



\$2,195,000

150 ACRE EQUESTRIAN CENTRE
 Denise Dilbey**
 Direct: 416-919-9802



Lynn Miron*



Christine Monckton*



Barbara Sinclair McLeod*



David Dayman*



\$334,900

SUMMER WILL BE BACK - BE READY
 Kati Nuttall*
 Direct: 905-691-7717



Denise Dilbey**



\$209,900

RIVER VIEW BUILDING LOT
 Heather Morison**
 Direct: 905-873-4266



Peter Droog*



\$775,000

OVER 4000 SQ FT IN ARBOR GLEN ESTATES
 Susan Lougheed*
 Direct: 905-702-4772



\$1,669,000

GLEN WILLIAMS ESTATE SUBDIVISION
 Lisa Hartsink*
 www.lisahartsink.com



\$12.00 SQ. FT. NET

UPGRADED OFFICE IN ACTON
 Heather Morison**
 Direct: 905-873-4266



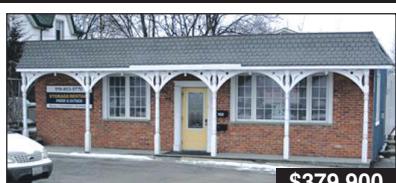
Heather Morison**



Kati Nuttall*



Ruth Germain*

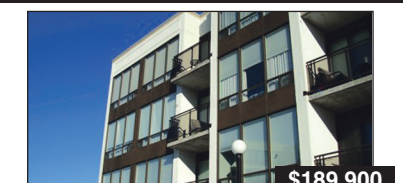


\$379,900

ZONED M2
 Heather Morison**
 Direct: 905-873-4266



Lisa Hartsink*



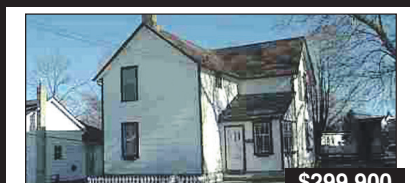
\$189,900

3 BEDROOM PENTHOUSE UNIT
 Heather Morison**
 Direct: 905-873-4266



\$194,900

HEART OF MISSISSAUGA
 Susan Lougheed*
 Direct: 905-702-4772



\$299,900

INVESTMENT OPPORTUNITY
 Ruth Germain*
 www.ruthgermain.ca



Lynn Oles*



Peter Scholz**



Michael Imrie*



\$209,900

TASTEFULLY UPDATED
 Christine Monckton*
 Direct: 416-420-6662



\$1400/MTH

ELEGANT 2 BEDROOM TOWNHOUSE
 Peter Droog*
 Direct: 647-282-5010



\$949,000

EVERYTHING YOU CAN IMAGINE!
 Denise Dilbey**
 Direct: 416-919-9802



\$255,000

THINKING OF RETIRING?
 Tony* & Carol** Walraven
 carolandtony@royallepage.ca



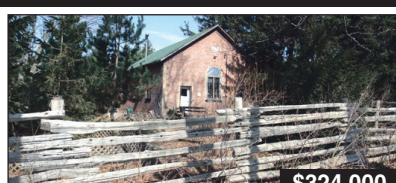
Heather Thomson*



Carol Walraven** & Tony Walraven*

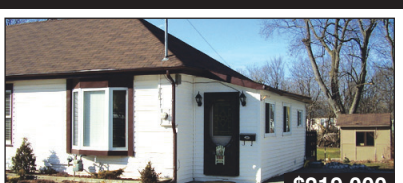


Kevin Kennerly*



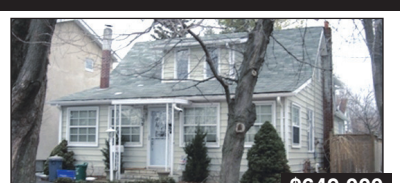
\$324,000

FROM THE PAGES OF HISTORY - ERIN
 Denise Dilbey**
 Direct: 416-919-9802



\$219,000

HOME & SHOP 5% DP/\$1082/MO
 Heather Morison**
 Direct: 905-873-4266



\$649,000

PORT CREDIT CENTURY HOME
 Denise Dilbey**
 Direct: 416-919-9802



\$285,000

STATE OF THE ART FACILITIES
 Lynn Oles*
 Direct: 905-460-4700



Peter Zarins*

Helping you is what we do

*Salesperson **Broker