

REAL ESTATE

LEADER



PLEASE PACK BEFORE YOU CALL!
GLENN SPROULE
 Sales Representative
 Direct: 416-553-0054
 Office: 905-877-5211
 email: gsproule@trebnet.com



Bill McKeown
 Broker
877-5211
 www.mcqwin.com
 RE/MAX REAL ESTATE CENTRE INC., Brokerage

THE LEADING REAL ESTATE PUBLICATION SERVING THE 22,500 HOMES OF HALTON HILLS AND SURROUNDING AREAS • THE INDEPENDENT & FREE PRESS
 REALESTATE@INDEPENDENTFREEPRESS.COM

Your Home Today

realtor
Ray Chesher

905-877-9001

call today and find out what your home is really worth

Holly Light • Jennifer Sargeant • Karen Pedersen

unleash the power of your home ... to sell for more!

free home staging consultation with listing

home staging consultation

HeyRay.ca

75 Guelph St., Georgetown ON L7G 3Z8
 *sales representative



Denise Dilbey
 Broker



Top 3% in Canada for Royal LePage (2009)

24 hr paging: 905-877-8262
 Toll free: 1-866-865-8262
 Direct: 416-919-9802

ddilbey@royallepage.ca
 www.ddilbey.com

ROYAL LEPAGE

Meadowtowne Realty, Brokerage
 Independently Owned and Operated



\$949,000

SOMETHING FOR EVERYONE ON 9 ACRES - HALTON HILLS
 Incredible property offers a park-like setting equipped with an updated 4 bdrm home w/walk-out bsmt, forest area for ATV & hiking and multi-use heated 66 ft x 34 ft 5 car garage, 23 ft x 24 ft 2 car garage, heated 2,400 sq. ft barn, 45 ft x 27 ft drive shed plus room for outside storage! 5+ acres of manicured irrigated lawns, grass paddocks, skate & swim pond, decks & heated in-ground pool. You'll never need a cottage having this property! 10 minutes north of Milton and Highway 401 on a paved road.
 MLS# W1797370



\$849,900

EXECUTIVE COMFORT AND LUXURY - BALLINAFAD
 Oh my! Look no further, this is it! Absolutely stunning custom 2005 built stone bungalow on .5 acre lot. 3 bdrms, 4 baths & 2 bdrm in-law suite w/sep. entry. Soaring 10 ft, cathedral & coffered ceilings. Gleaming Brazilian cherry, maple & granite floors. Entertainer's dream granite kitchen w/eat-in area & walk-out to patio. Master retreat offers walk-in closet & luxurious 5 pc ensuite. Outstanding quality materials & workmanship. 4,500 sq. ft of living space, 2 driveways, 2 car garage & sep. garage/shop. Minutes north of Highway 401.
 MLS# W1702879



\$394,000

HIDDEN GEM - ERIN
 Ultimate updated 3 bdrm raised bungalow on a fully fenced 66' x 164' lot backing onto forest. Huge kitchen w/island & Corian counters open to eat-in area w/access to deck & hot tub. King-size mstr w/walk-in closet & ensuite. Hrdwd flrs & crown moulding. Partly fin'd bsmt w/access to 2 car garage & bright rec room. Quaint village setting, friendly dead-end street close to Credit River and downtown.



\$1,199,000

PICTURE PERFECT ON 10 ACRES - MILTON
 Appreciate the finer things in life? Then, you'll approve this exceptional quality custom built R2000 style 4 bdrm home with finished walk out bsmt. Boasting 3,000+ sq ft of grace and elegance. Stunning Gourmet Cherry Kitchen w/granite island & counters, WI pantry and walk out to a private balcony w/breathtaking views. Double sided gas FP opens to a formal dining rm. Spacious and luxurious main flr Mstr retreat. Main flr laundry and breezeway to oversized 2 car garage. Mins from Milton and HWY 401 on paved rd.



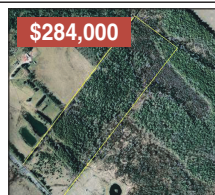
\$324,000

ONCE IN LIFETIME OPPORTUNITY - ERIN
 From the pages of history comes this 1873 schoolhouse. Now is a one-of-a-kind 1,400 sq. ft, 3 bedroom home nestled on a mature treed 165 ft x 115 ft country lot. 9.6 ft ceilings and wood stove. Main floor family and laundry rooms and 2nd floor loft. Jacuzzi tub. Updates include septic 2009, hydro and furnace. Paved road.
 MLS# X1801078



\$293,000

FOR THE WHOLE FAMILY GEORGETOWN
 3+2 bedroom semi-detached Bungalow with neutral décor and separate side entrance to bsmt. 2nd flr loft gives you more room to play. Hrdwd under carpet. Bsmnt offers hook up for 2nd kitchen makes it ideal as an IN-LAW or TEEN suite. 2 Garden Sheds. Double paved driveway w/parking for 6 cars. Updated roof, hydro panel and furnace. Great family area, walk to schools, parks, shops and more. Immediate possession available.
 MLS# W1808762



\$284,000

INVESTMENT & PRIVATE GET AWAY
 CALEDON - 22 acres for your dream home or use as hunters paradise or getaway. Building envelope established by CVC. Paved road. MLS# W1769498
 GEORGETOWN - Future residential/office zoning under the new Town of Halton Hills OP. 2 deeded lots of 66x132' ideal for duplex/triplex dwellings, commercial/residential or office development.
 MLS# W17029026



\$249,000

Lasting Impressions Balloon Company

GRAND RE-OPENING
 119 Mill Street, Georgetown

Come in for a complimentary coffee or tea and browse the newly renovated store.

Enter to win Marie Osmond door prize (value \$400) plus many more prizes.