

MAKE YOUR MOVE WITH JOY!

NEW



4 bedroom home centrally located
\$364,000

SOLD SOLD

23 STONEBROOK

38 EWING STREET

Office: 905.877.5211

Direct: 416.951.8604

*Sales Representative **JOY NOLAN**



STEVE TANCOO

**Broker

RE/MAX REAL ESTATE CENTRE

1-800-834-5516

www.LindaRagona.com



Over 20 years Combined Experience



LINDA RAGONA

*Sales Rep.



1ST AD

OPEN HOUSE
SUN. 2-4 PM,
215 CHURCHILL
RD. S., ACTON

\$389,900

• gorgeous 4 br, 3 bth home • fin. top to bottom • huge backyard • beautiful views

www.RealEstateActon.ca



LARGE BUNGALOW LARGE LOT

• 3 bedrooms, 2 baths • Renovated kitchen with maple cabinets, and much more

\$259,900



HUGE PRIVATE BACKYARD

• 3 BR/2 Baths • Private Entrance to Basement • Close to All Amenities

\$319,900



NEW

www.RealEstateActon.ca

GREAT POTENTIAL

• Serene 10 acres 311 x 1406 feet • 2 road frontages

\$249,000



WHAT AN OPPORTUNITY!

• 1800 sq ft 4 Bay Heated Garage • Corner of Trafalgar & Maple • Great Location

\$2,700/mth Lease



NEW

CHEAPER THAN RENT

• Freshly painted • New floors • Close to all amenities

\$129,900

Ask about our list of available homes. Call for a FREE MARKET EVALUATION



JOHN PANNOZZO

Sales Rep.

905-275-9400

Direct

416-573-9795

www.jprealproperty.com

ROYAL LEPAGE

Real Estate Services Ltd., Brokerage



Magnificent quality-built, executive home by small custom builder in Georgetown South. Open concept! 9' ceiling on main flrs & large eat-in kitchen with french doors

walkout to deck. Gas fireplace in family room, crown moulding & wainscoting throughout! Spacious master with 5 pc ensuite with soaker tub, entrance to garage. Main floor laundry, r/i central vac. Exceptional value with this pie-shaped deep lot' 54' x 147'. Move in and enjoy!!!



Maureen Plucinsky B.Sc.
Sales Representative

HALL OF FAME

Town & Country

RE/MAX
Real Estate Centre Inc.

(905) 877-5211

1-800-834-5516

Directions & Photos
<http://maureen.ca>



Michael Baron
Sales Representative



Rear View

Rear view of Main House with w/o lower level with 9' ceilings. Note the wrap around deck & many walk-outs

Home + Coach House

In-law suite



~ 28 Ac

~ 5 min to Georgetown & GO

Awesome oasis. Totally private. Rolling land surrounded by conservation land & Bruce Trail. **Bungalow with walk-out, 9' high bsmt.** 2 large rooms in unfinished loft. Huge kitchen overlooks the Great rm with wood FP, cathedral ceiling, 3 skylights, walls of windows & walk-outs to large cedar deck. Gorgeous hickory hrdwd floors. MBR with walk-out to hot tub. Coach house (29'x 40') with upper level, 2 bdrm in-law suite.

Halton Hills: 13107 Hwy 7 MLS#: W1762367

Passive Solar

R-2000



SOLD

~ 10 Ac

~ 15 min to 401

Open concept! Bright! 2900Sft. 4bdrm or 3+den. 3 WRs. Inspired by Frank Lloyd Wright. **R-2000 certified.** Won prize: Enerquality R-2000, "Best Overall Design". 11ft & 9 foot ceilings! **Passive solar design**, i.e. orientated for sun. **Geo-Thermal furnace. VanEE. Low energy cost!** **Hi speed internet. Low taxes!! Pond (20' x 24')!** Fenced for dogs & horse. Trails through woods. ~15 min to 401, Milton & GO train.

Milton: 12720 Fifth Line, Nass MLS #: W1763680

Not in Greenbelt

NEW 25 Acres

INVESTMENT



Front View

25ac! **INVESTMENT land**(1120.19' x 989.25') **Not in Greenbelt.** Adjacent to 300 acre Piper's Heath Golf Course. 6 min to 401; 2 min to 407! Natural gas! 2 wells! 2 driveways! **Magnificent new 5800+ sq ft stone clad home:** 4+1 bdrms, 7 washrms, 6+ fireplaces. 10' ceilings. Built to extremely high standards. Main floor

Milton: 13670 Britannia Rd E MLS#W1801858



Rear View

MBR with FP, hardwood; 5pc ensuite, walk-in closet & 2 walk-outs. LR with palladium window & floor to ceiling wood FP. Open concept kit (walk-in pantry; granite countertops; huge centre island with breakfast bar; 3 sinks; Sub-Zero fridge; 2 bli ovens; stove top with 4 burners, flat grill & BBQ; pot filler;) o/l the great Fam Rm with a flr to ceiling stone FP. Open concept DR. Enjoy living here & golf while your land investment grows!

NEW

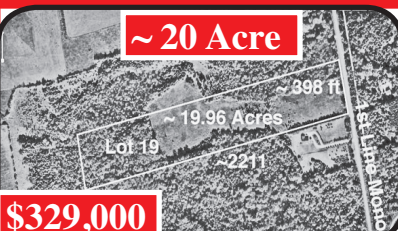
10 Ac



\$575,000

Halton: Lot 16 Fifth Line, HH

Outstanding 10 ac parcel. On a knoll with **panoramic views** towards Lake Ontario & To. ~ 388' x 1126'. SW of Georgetown. Min to 401 & 407. South of & adjacent to 11178 Fifth Line, H.H. Amazing views day & night. In Greenbelt. Perfect for your dream home. MLS#: W1814145



~ 20 Acre

\$329,000

Mono: Lot 19 First Line

EHS: Rare, scenic 20 acre parcel of gently rolling land with meadows & treed areas. No hydro towers or train tracks nearby! **Not in NEC, Greenbelt nor in the Oak Ridges Moraine.** 10 min N of Orangeville. Minutes to hundreds of acres of recreation in Mono Cliffs Provincial Park.