



# Sandi Melro

Sales Representative

Office: 905-671-4004 Direct: 647-888-3335  
sandimelro1@century21.ca



Modern Realty Inc., Brokerage

## OPEN HOUSE - SATURDAY & SUNDAY 2-4 P.M. 3 Killaloe Cres., Georgetown



4+1 bedroom and 2.5 bath POPULAR Westminster located in Georgetown South!! Freshly painted, prof landscaped yard with interlock walkway and patio. Find Maple and pear trees out back with space for a pool. Plus find a formal dining rm, family rm with woodburning FP and living rm with french door entry. Kit. has a butler pantry, a great breakfast area with w/o to patio. You have an entrance through the garage into the main floor laundry. 4 large bdms, master has a 5 pc bath and cath ceiling. Bsmt is finished with glorious solid oak wet bar, TV niche, surround sound system and an extra bdrm for your convenience. Furnace (09), AC (07) and new roof (08). Great area for the kids, excellent layout, walking distance to 4 schools, shopping and parks. Listed at \$474,900. Call 647-888-3335 for more information.



Small Service companies, Home businesses, hobbyist - this place is for you. 1.5 acre property available w/a 3 bed bungalow (TLC needed) and an 1800 sq. ft. shop w/20' height clearance. Interested? Call Sandi\* for more details.

bed bungalow (TLC needed) and an 1800 sq. ft. shop w/20' height clearance. Interested? Call Sandi\* for more details.

Looking For Financing? 5.5% Cash Back Available OAC.  
Call The Abreu Team and let us open the door to your future memories!



# CARRIERS NEEDED GEORGETOWN

Baylor Cres.  
Hall Rd.  
Hamilton Cres.

If interested, please call  
CIRCULATION 905-873-0301

THE INDEPENDENT & FREE PRESS



STEVE TANCO  
\*\*Broker

# RE/MAX REAL ESTATE CENTRE

## 1-800-834-5516

www.LindaRagona.com



Over 20 years Combined Experience



LINDA RAGONA  
\*Sales Rep.



## HUGE PRIVATE BACKYARD

- 3 BR/2 Baths
- Private Entrance to Basement
- Close to All Amenities

**\$319,900**

www.LindaRagona.com



NEW PRICE

LARGE BUNGALOW  
**\$259,900**



- 3 bedrooms, 2 baths • Renovated kitchen with maple cabinets, and much more



NEW

## GREAT POTENTIAL

- Serene 10 acres 311 x 1406 feet
- 2 road frontages

**\$249,000**

www.RealEstateActon.ca



NEW

## CHEAPER THAN RENT

- Freshly painted
- New floors
- Close to all amenities

**\$129,900**

Ask about our list of available homes. Call for a FREE MARKET EVALUATION



HALL OF FAME

Town & Country

Maureen Plucinsky B.Sc.  
Sales Representative

# RE/MAX Real Estate Centre Inc.

(905) 877-5211  
1-800-834-5516

Directions & Photos  
<http://maureen.ca>



Michael Baron  
Sales Representative



## Rear View

Rear view of Main House with w/o lower level with 9' ceilings. Note the wrap around deck & many walk-outs

## Home + Coach House

## In-law suite



~ 28 Ac

~ 5 min to Georgetown & GO

Awesome oasis. Totally private. Rolling land surrounded by conservation land & Bruce Trail. Bungalow with walk-out, 9' high bsmt. 2 large rooms in unfinished loft. Huge kitchen overlooks the Great rm with wood FP, cathedral ceiling, 3 skylights, walls of windows & walk-outs to large cedar deck. Gorgeous hickory hrdwd floors. MBR with walk-out to hot tub. Coach house (29' x 40') with upper level, 2 bdrm in-law suite.

Halton Hills: 13107 Hwy 7 MLS#: W1762367

## Not in Greenbelt

25 Acres

## INVESTMENT



## Front View

25ac! INVESTMENT land (1120.19' x 989.25') Not in Greenbelt. Adjacent to 300 acre Piper's Heath Golf Course. 6 min to 401; 2 min to 407! Natural gas! 2 wells! 2 driveways! Magnificent new 5800+ sq ft stone clad home: 4+1 bdms, 7 washrms, 6+ fireplaces. 10' ceilings. Built to extremely high standards. Main floor Milton: 13670 Britannia Rd E MLS#W1801858



## Rear View

MBR with FP, hardwood; 5pc ensuite, walk-in closet & 2 walk-outs. LR with palladium window & floor to ceiling wood FP. Open concept kit (walk-in pantry; granite countertops; huge centre island with breakfast bar; 3 sinks; Sub-Zero fridge; 2 bli ovens; stove top with 4 burners, flat grill & BBQ; pot filler;) o/l the great Fam Rm with a flr to ceiling stone FP. Open concept DR. Enjoy living here & golf while your land investment grows!

## Passive Solar

## R-2000



~ 10 Ac

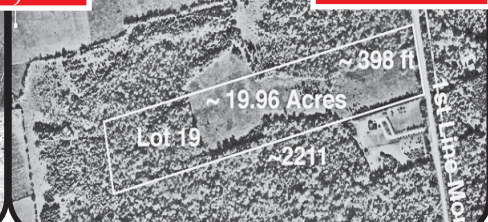
~ 15 min to 401

Open concept! Bright! 2900Sft. 4bdrm or 3+den. 3 WRs. Inspired by Frank Lloyd Wright. R-2000 certified. Won prize: Enerquality R-2000, "Best Overall Design". 11ft & 9 foot ceilings! Passive solar design, i.e. orientated for sun. Geo-Thermal furnace. VanEE. Low energy cost! Hi speed internet. Low taxes!! Pond (20' x 24')! Fenced for dogs & horse. Trails through woods. ~15 min to 401, Milton & GO train. \$749K Milton: 12720 Fifth Line, Nass MLS #: W1763680



\$329,000

~ 20 Acre



## Mono: Lot 19 First Line

EHS: Rare, scenic 20 acre parcel of gently rolling land with meadows & treed areas. No hydro towers or train tracks nearby! Not in NEC, Greenbelt nor in the Oak Ridges Moraine. 10 minutes North of Orangeville. Minutes to hundreds of acres of recreation in Mono Cliffs Provincial Park. MLS #: X1754670