

REAL ESTATE

LEADER

**PLEASE PACK BEFORE YOU CALL!**  
**GLENN SPROULE**  
 Sales Representative  
 Direct: 416-553-0054  
 Office: 905-877-5211  
 email: gsproule@trebnet.com

**Bill McKeown**  
 Broker  
 877-5211  
 www.mcqWin.com  
 RE/MAX REAL ESTATE CENTRE INC., BROKERAGE

THE LEADING REAL ESTATE PUBLICATION SERVING THE 22,500 HOMES OF HALTON HILLS AND SURROUNDING AREAS • THE INDEPENDENT & FREE PRESS  
 REALESTATE@INDEPENDENTFREEPRESS.COM



**Ray Cheshier**  
 broker of record

- Customer Care Team  
 Holly Light\*  
 Jennifer Sargeant\*  
 Karen Pedersen\* sales representative

75 Guelph St., Georgetown ON L7G 3Z8

**Your Home Today** Realty Inc. Brokerage



direct: **905-877-9001**  
 e-mail: **Ray@HeyRay.ca**  
 proven performance in any market



**Denise Dilbey**  
 Broker



Top 3% in Canada for Royal LePage (2009)

24 hr paging: 905-877-8262  
 Toll free: 1-866-865-8262  
 Direct: 416-919-9802  
 ddilbey@royallepage.ca  
 www.ddilbey.com

**ROYAL LEPAGE**  
 Meadowtowne Realty, Brokerage  
 Independently Owned and Operated

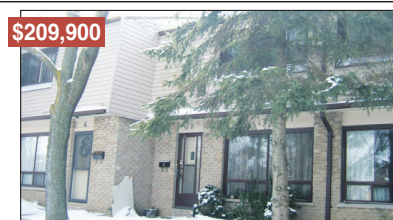


\$949,000



**FOR HIM AND HER ON 9 ACRES**

Incredible 9 Acre Country Estate offering something special for everyone. A gated tree lined paved driveway leads to an updated Spanish style home, heated 5+2 car garages, a versatile heated 2400sf Barn ideal for many uses & 2 Drive sheds w/more outside storage space. Amazing hiking/ATV trail thru 4 acres of forest w/more room to play manicured lawns, paddocks, skate/swim pond, open & covered decks & heated inground pool. Bright & spacious Country kit opens to stunning rms w/vaulted ceilings, FP & WO to a wrap around deck. Mstr ensuite, w/ closet & private balcony. Main Fir Family offers WO, Wood Stove & large Games room or 4th bdrm. House offers too many updates to list. MLS# W1797370



\$209,900

**VALUE WITHOUT COMPROMISE - GEORGETOWN**

Tastefully updated & well maintained home in a great central location. Updated Kitchen with open concept living dining rooms. Large Bdrms, King Sized Master! Walk out to fenced yard. Backs onto Park. Almost finished basement. Lots of storage. Family friendly area within walking distance from Mall, GO bus stop and more. MLS# W1794648



\$324,000

**FROM THE PAGES OF HISTORY - ERIN**

This 1873 school house now is a one-of-a-kind family, 1,400 sq. ft 3 bedroom Bungalow, nestled on mature treed country lot. Wood stove enhances an open concept living space. Main flr family rm, laundry & 2nd flr loft/library. Updates incl. septic, hydro & furnace. Paved road. A must see!!!



\$534,000



**IDEAL FOR RENOVATORS AND INVESTORS - ERIN**

19 acres outside the Greenbelt and no conservation restrictions 10 minutes north of Acton. This property offers modest 1890 built 2 storey, 1,600 sq. ft century home with updated windows, shingles, wiring, heating and 200 amp hydro service but requires a Hug & Kiss. Fully equipped 10 stall bank barn with hot and cold water and hay loft, 70 ft x 104 ft indoor riding arena equipped with halogen lighting & 2 overhead doors. 8 fenced paddocks & 13 acres in grass for hay or cultivated for cash crops. Paved road. A must see! MLS# X1720688



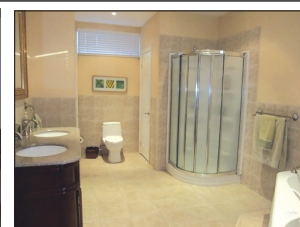
\$2,195,000

**DREAM CATCHER ON 150 ACRES - MILTON**

Make your passion a business. This 'state-of-the-art' facility is totally self sufficient and boasts amenities for every riding discipline. Olympic-sized 200 x 80 ft indoor arena ('02), 100 x 64 ft 25 box stall stable ('02) with indoor wash stalls, heated tack rooms and washroom, security system, versatile 88 ft x 50 ft drive shed ('07) and 2 hopper bins for feed storage. Riding/jumping rings and cross country trails. All season paddocks with water and shelters and renovated 1,660 sq. ft, 3 bedroom century home. Paved Road. MLS# W1706662



\$849,900



**ALMOST NEW EXECUTIVE WITH IN-LAW SUITE - ERIN**

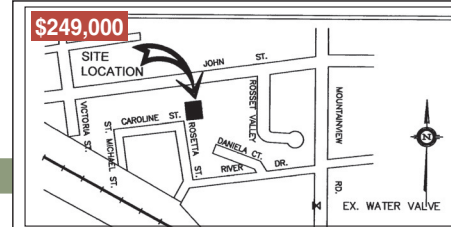
Custom stone built bungalow with the finest attention to detail and top quality materials. You'll be impressed the minute you walk through the door. 9/10 ft, cathedral & coffered ceilings are finished w/crown moulding, 7 ft doorways & gleaming cherry, maple & granite flrs. Luxurious granite kit., master retreat w/walk-in closet, ensuite oasis & walkout. Main flr laundry. Oversized 2 car garage and separate 1 car/workshop with it's own driveway. Bright fully fin'd open concept in-law suite w/9ft ceilings, 2nd huge kit. & 2 bdrms and garage entry. MLS# W1702879



\$284,000

**RECREATIONAL BUILDING LOT - CALEDON**

22.76 Acres of heaven with nature & wildlife at your doorstep. Ideal location within 45 mins of the Airport on a paved road. Offers mixed forest, streams & meadow areas. Ideal getaway for recreational hunting or pleasure purposes with potential to build your dream home on designated building sites established by Credit Valley Conservation. Deer, wild turkey, rabbits & more. Driveway access from road. Over 500 ft on Winston Churchill Blvd. MLS# W1769498



\$249,000

**INVESTMENT LAND - GEORGETOWN**

2 separate deeded lots of 66 x 132ft offers a total of 132 x 132 building lot awaits your future investment dreams. Offer a great location for future medium density residential/office buildings for zoning of duplex/triplex dwellings, commercial/residential or office use. This is a unique property so call for more details. MLS# W1729026

Proudly serving Residential, Farm and Country Properties - Acton, Caledon, Eramosa, Erin, Georgetown, Guelph, Halton Hills, Hillsburgh, Milton, Oakville, Mono, Orangeville, Rockwood and surrounding areas.

**"Moving Beyond Expectations"**