

**ROYAL LEPAGE**  
**Meadowtowne Realty, Brokerage**  
 Independently Owned and Operated

**324 Guelph Street**  
**Georgetown**  
**905-877-8262**



**Acton**  
**519-853-8467**  
 TOLL FREE:  
**1-866-865-8262**  
**www.meadowtowne.com**



Kate Banks\*



\$189,900

**3 BEDROOM PENTHOUSE UNIT**  
 Heather Morison\*\*  
 Direct: 905-873-4266



David Baptie\*



\$150,000

**HANDYMAN'S SPECIAL**  
 Lynn Oles\*  
 Direct: 905-460-4700



Stuart Colvin\*



Ross Culpin\*



\$179,900

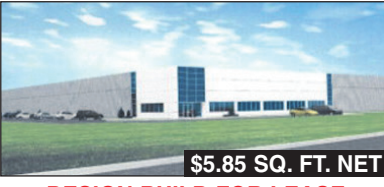
**NOTHING TO DO HERE!**  
 Lynn Miron\*  
 Direct: 905-699-4065



David Dayman\*



Denise Dilbey\*\*



\$5.85 SQ. FT. NET

**DESIGN BUILD FOR LEASE**  
 Peter Scholz\*\*  
 peterscholz@royallepage.ca



Peter Droog\*



\$334,900

**UPGRADED CENTURY HOME**  
 Kati Nuttall\*  
 www.katican.ca



Ruth Germain\*



Lisa Hartsink\*



\$219,000

**WARM AND COZY 2 BEDROOM**  
 Barbara McLeod\*  
 www.barbaramcleod.ca



Michael Imrie\*



Kevin Kennerly\*



\$89,900

**BUILD A HOME ON IRISH LAKE**  
 Kevin Kennerly\*  
 Office: 905-877-8262



Susan Lougheed\*



\$194,900

**HEART OF MISSISSAUGA**  
 Susan Lougheed\*  
 Direct: 905-702-4772



\$5.85 SQ. FT. NET

**DIST'N CENTRE 200,000 SF**  
 Peter Scholz\*\*  
 peterscholz@royallepage.ca



\$1,099,000

**CUSTOM BUNGALOW ON 38 PRISTINE ACRES**  
 Michael Imrie\*  
 Direct 416-318-7167



\$649,000

**RAVINE LOT WITH LOADS OF UPGRADES**  
 Heather Morison\*\*  
 Direct: 905-873-4266



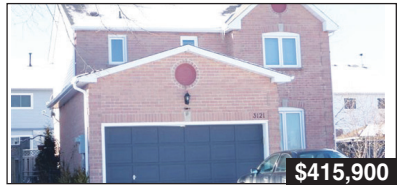
\$289,900

**BUNGALOW ON LARGE LOT**  
 Kate Banks\*  
 Direct: 416-997-4161



\$12 SQ. FT. NET

**UPGRADED OFFICE IN ACTON**  
 Heather Morison\*\* Direct: 905-873-4266



\$415,900

**MEADOWVALE BEAUTY**  
 Lynn Oles\*  
 Direct: 905-460-4700



\$299,900

**INVESTMENT OPPORTUNITY**  
 Ruth Germain\*  
 www.ruthgermain.ca



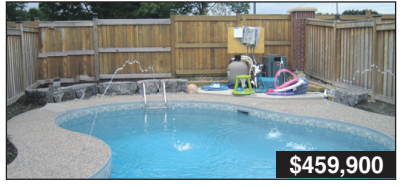
\$849,900

**ABSOLUTELY BREATHTAKING!!**  
 Denise Dilbey\*\*  
 Direct: 416-919-9802



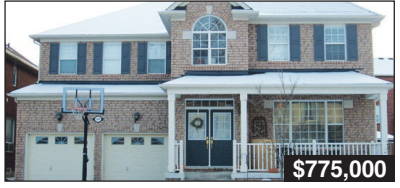
\$494,900

**RESORT LIKE BACKYARD - INGROUND POOL**  
 Ruth Germain\*  
 www.ruthgermain.ca



\$459,900

**EXCLUSIVE**  
 Lisa Hartsink\*  
 www.lisahartsink.com



\$775,000

**OVER 4000 SQ FT IN ARBOR GLEN ESTATES**  
 Susan Lougheed\*  
 Direct: 905-702-4772



\$225,000

**RIVER VIEW BUILDING LOT**  
 Heather Morison\*\*  
 Direct: 905-873-4266



\$539,900

**ALMOST 2500 SQ FT OF ELEGANCE**  
 Ruth Germain\*  
 www.ruthgermain.ca



\$369,900

**TRENDY TUSCAN KITCHEN!**  
 Susan Lougheed\*  
 Direct: 905-702-4772



\$2,195,000

**150 ACRE EQUESTRIAN CENTRE**  
 Denise Dilbey\*\*  
 Direct: 416-919-9802



\$949,000

**ESTATE HOME WITH INGROUND POOL**  
 Ruth Germain\*  
 www.ruthgermain.ca



\$249,000

**ATTENTION DEVELOPERS**  
 Denise Dilbey\*\*  
 Direct: 416-919-9802



\$284,000

**ENCHANTING FOREST**  
 Christine Monckton\*  
 Direct: 416-420-6662



\$374,900

**CHARMING RENO'D 3 BEDROOM BUNGALOW**  
 David Baptie\*  
 Direct: 416-707-2714



\$274,900

**SPACIOUS 2 BEDROOM WITH FIREPLACE**  
 Ruth Germain\*  
 www.ruthgermain.ca



Lynn Miron\*



Christine Monckton\*



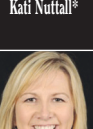
Barbara Sinclair McLeod\*



Heather Morison\*\*



Ruth Germain\*



Kati Nuttall\*



Lynn Oles\*



Peter Scholz\*\*



Heather Thomson\*



Carol Walraven\*\* & Tony Walraven\*\*



Darren Williams\*



Peter Zarins\*

**Helping you is what we do**

\*Salesperson \*\*Broker