



Dianne Penrice

COVERING THE HILLS WITH SERVICE
*Broker
905.877.5165

Johnson Associates
REAL ESTATE LTD., BROKERAGE

OPEN HOUSE SUNDAY, JAN. 24, 2010 Time: 2:00 - 4:00 p.m.
52 Gardiner Drive (just off Maple Ave.)



This executive home is on a wooded ravine lot in the Park area of Georgetown. 4 very good size bedrooms, the master suite comes with 5 piece ensuite and two closets; the family room overlooks the ravine and the breakfast nook adjoins it which makes for a very comfortable family area. Formal dining and living rm give you entertain potential anyone could hope for. This is a very versatile home in its use of space and layout. Close to schools, park and downtown area. Asking \$645,000. W1767900



MATURE LOT - EXCELLENT LOCATION
A 3 bedroom back split with finished recreation rm and extra 2 pc. Many many upgrades in this home, a must to see. Located close to school, and shopping, easy walk to downtown area. Lot is large enough for a pool. Includes all appliances. Asking \$345,000. W1766087



WONDERFUL CONDO APT.
This one bedroom, plus den is located in the Royal Ascot. This is a lovely building with lots of extras. The apartment has 1 full bath, a very good size living rm with combination dining rm, a kitchen with plenty of cupboards & decent in suite laundry facilities. Asking \$217,900. W1728632



Karen McEvoy

Sales Representative

905-877-5165
519-833-9714

100% COMMITTED TO ACHIEVING YOUR REAL ESTATE GOALS



Johnson Associates
REAL ESTATE LTD., BROKERAGE

OPEN HOUSE - SUNDAY JANUARY 24TH, 2-4 PM
9202 NINTH LINE, HALTON HILLS



COUNTRY LIVING CLOSE TO TOWN!

Spacious 5 bedroom home mins. from town and the 401. New gleaming hardwood floors, updated kitchen w/ centre island overlooks huge family room, 5th bdrm & 2nd family room on main level (great for the teens and inlaws). Updated washrooms, newer windows, shingles & furnace. Central air & vac. 3 season sun room with hot tub, interlock walkways & patio, wrap-around deck. Superb family home with great pastoral views. Call for your personal viewing today! \$599,000 W1702690



GUELPH - LISTED AT \$119,000



GEORGETOWN - LISTED AT \$242,900

WHO'S NEXT!

FROM THE ERIN OFFICE TEAM

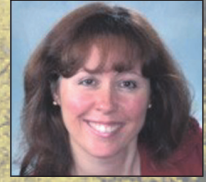
Thank you for your support in 2009



Sandra Brianceau*



Iris Irwin*



Karen McEvoy*



Marilyn Kerr*



Julia Stuart*



Laura Hayward*



Janice Rumley*



Kathy Ellis*



Lesley Honey*



Jill Johnson*



Kevin Latam*

We look forward to serving you in 2010

Johnson Associates
REAL ESTATE LTD., BROKERAGE

ERIN OFFICE
1A SPRING ST., ERIN
519-833-9714
*Sales Representative