

**"CUSTOM DESIGNED..."
WITH YOU IN MIND!**

**BELWOOD KITCHENS
PLUS**

- Traditional Styles
- Extensive Selection of Cabinet Styles
- Kitchen-Bathroom Renovations
- Appliances

QUALITY WORKMANSHIP
AT AFFORDABLE PRICES!

877-7850

**BENTLEY'S WATER
SERVICE LTD.**

WATER COOLERS RENT OR BUY

Water Softening Salt
Bottled & Bulk Water

875-1548

CORE'S WELL DRILLING

4th & 5th Working Generation

COMPLETE WATER SYSTEMS INSTALLED

878-4515 MILTON

**LEROY WILLIAMS
CONSTRUCTION**

BRICK, BLOCK AND STONE

"Fireplaces A Specialty"

(416) 796-8589

ART CONSTRUCTION

Interior - Exterior
Additions - Renovations
Kitchens - Rec Rooms
Commercial - Residential

(519) 853-4824

**Shop
HALTON
HILLS
First!**

CLASSIC HARDWOOD FLOORS

REFINISH & REPAIRS
to Old Floors & New Floor
Sales & Installations

Written Warranty Reasonable Rates

848-0888
Pager 334-8687

**CRITERION
ARPET & RUG CO. LTD.**

Residential - Commercial - Industrial

- BRAND NAME CARPETS
- SHOP-AT-HOME SERVICE

OPEN SATURDAY 10 A.M. - 4:30 P.M.

128 GUELPH ST. **877-1012**

**THIS SPACE
IS AVAILABLE**

CALL DISPLAY
ADVERTISING

- 877-2201 -

**PLUMBING
SUPPLIES**

- Acrylic Bath & Shower Units
- Whirlpools
- Spas • Pedestals
- Vanities & Medicine Cabinets

- Since 1958 -

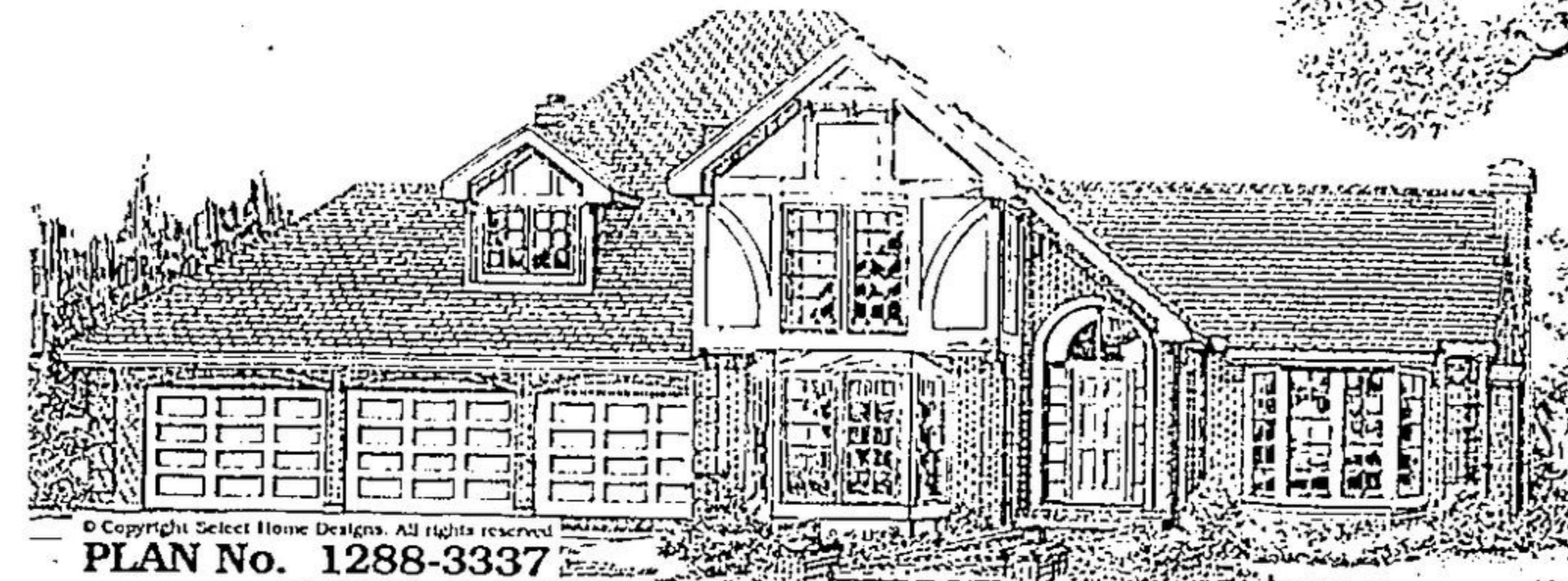
877-2293
798-7786

HOWELL
PLUMBING SHOWROOM

11 Armstrong Ave., Georgetown

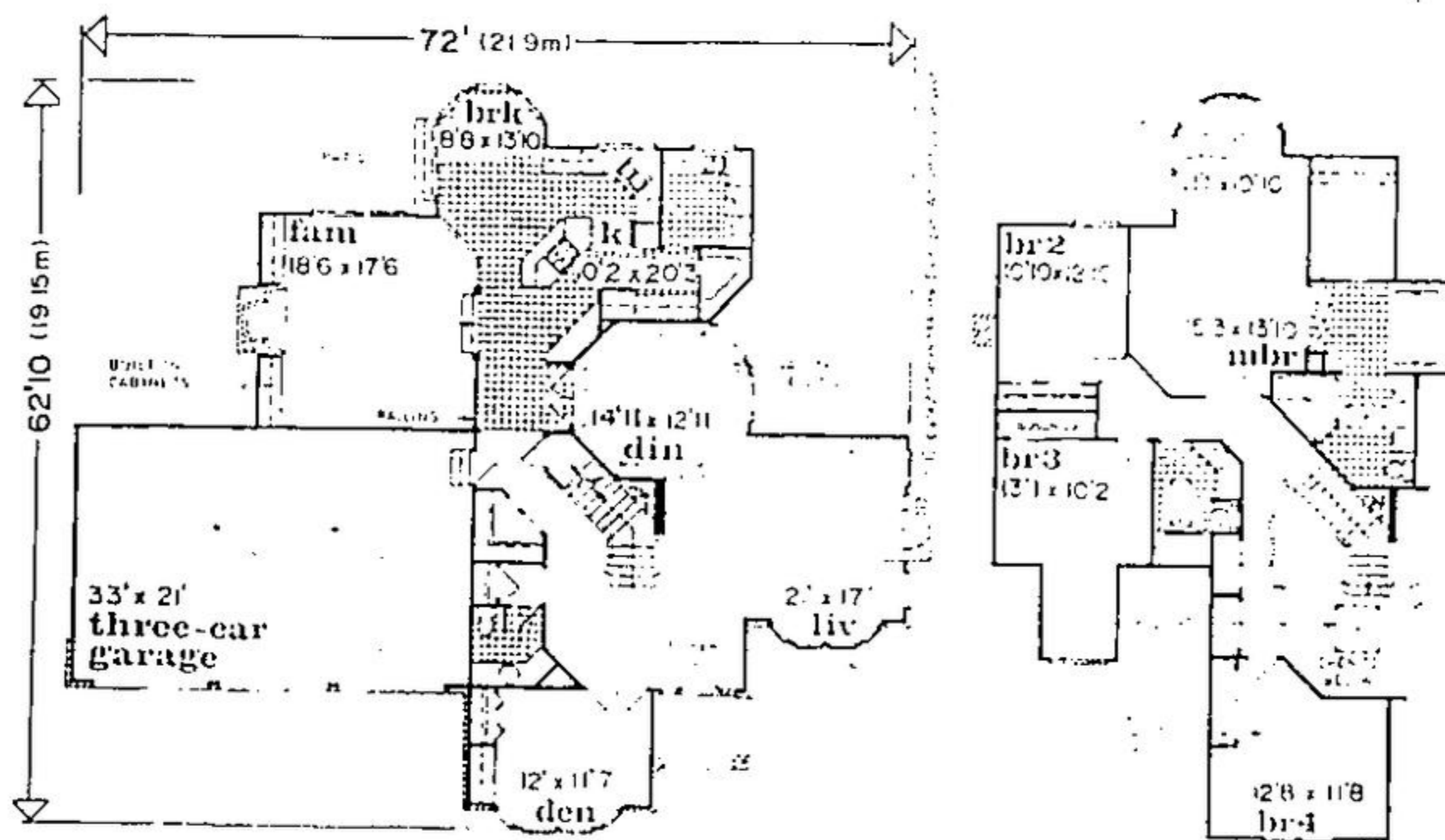
**HOME OF
THE WEEK**

Brought To You By:
HALTDESIGN
ARCHITECTURAL DESIGN SERVICES
873-7105



PLAN No. 1288-3337

**ENTERTAIN ELEGANTLY
IN OCTAGONAL DINING ROOM**



first level 1915 sq. ft.

second level 1548 sq. ft.

Gentle arched entry, brick detailing and tudor accents adorn this 3,463 square foot family home. The plan may also be built with brick and horizontal siding. The skylit foyer flows to an expansive vaulted living room with sitting bay. Adjoining the living room is an opulent octagonal dining room with coffered ceiling. The gourmet kitchen offers a walk-in pantry, centre cooking island and breakfast bay. A connecting laundry room provides ample counter and storage space to ease household chores. A railing separates the large sunken family room from the kitchen area. Built-in cabinets flanking the fireplace provide a

feature wall for the family room. The front facing den, with bay window and double doors, is isolated from the heavy traffic areas. The nearby powder room allows the den to double as an extra bedroom or in-home office. The open staircase ascends to a railed gallery which views the foyer below. The master bedroom boasts a bay window sitting area and skylit ensuite with walk-in closet, whirlpool spa, twin vanities and oversized shower. The three additional bedrooms share a skylit main bath with soaking tub. The fourth bedroom may be built with a vaulted ceiling. Send for Canada's

largest plan book with over 500 home plans, including a wide variety of architectural styles, from luxurious brick manors to affordable bungalows, only \$8.95 (including shipping and GST). To order using Visa or Mastercard call toll free 1-800-663-6739 or send cheque or money order to Home of The Week c/o The Halton Hills Herald, 382 West Broadway, Vancouver, B.C. V5Y 1R2. Trained consultants are standing by Monday to Saturday, to take your order for the plan book or plan no. 1288-3337. Please feel free to request any information you may require before placing your order.

**TWISS FUELS
LTD.**

- LUBRICANTS
- 24 HR. EMERGENCY BURNER SERVICE
- INSTALLATIONS

878-6380

32 Steeles Avenue East
MILTON, ONTARIO

**TO
ADVERTISE
IN
THIS SPACE
CALL**

Kim Haryott
877-2201

HALTDESIGN
ARCHITECTURAL DESIGN SERVICES

- Complete designs for custom homes, additions and renovations
- We offer free consultation as well as very reasonable rates
- Our professionally engineered plans will save you thousands when building

"TOGETHER WE'LL
PLAN YOUR
DREAM"

873-7105

**BOUCHER
ALUMINUM**

NAME BRAND
ALUMINUM SIDING

- Soffit & Fascia
- Seamless
- Eavestrough
- Doors
- Windows

ALCAN

SELECTION OF COLOURS
- FREE ESTIMATES -

877-8830

DREAMSCAPE
LANDSCAPING & LAWN SPRINKLER
WINTERIZING

**SNOW
REMOVAL**

873-1917

**THIS SPACE
IS AVAILABLE**

CALL DISPLAY
ADVERTISING

- 877-2201 -

**HALTON HILLS
MECHANICAL**

Residential & Commercial
Plumbing, Heating & Air Conditioning
SALES - SERVICE - INSTALLATION
25 Years Experience

PROPRIETORS
LARRY DESJARLAIS - GERRY GOSSELIN

CALL RHEEM
AND LIVE
WARMLY
EVER AFTER

BUS. 873-2137
FAX 873-1911

BASEMENT LEAK?
CALL
G. PAYNE CONTRACTING

- MODERN TEST-GOES • FREE EST. MATES
- 10 YEAR GUARANTEE
- POLYED OR BUILT • FOUNDATION

416-455-3425

**FIREPLACES,
WOOD STOVES,
GAS INSERTS**

VISIT OUR SHOWROOM
BURN MODELS ON
DISPLAY

454-0497

MEMBER

**The
Barbque
Clinic**

155 CLARK BLVD., BRAMPTON

**WATER PUMP
Sales & Service**

Serving Mississauga
Erin & Halton Hills

BOYES PLUMBING
for all your
plumbing needs

855-4232

★ AUTO PROPANE ★
RESIDENTIAL - COMMERCIAL
& INDUSTRIAL

GUARANTEED SUPPLY
GUARANTEED 24 HOUR
SERVICE

MILTON 878-2318
GUELPH 822-7780