

SHER-BOND MASONRY

- Block Foundations
- Chimney Repairs
- Retaining Walls
- Fireplaces
- Flagstone
- Brick & Stone Work

FREE ESTIMATES CALL STEVE 878-9360

SILVA TILE & MARBLE CO.

SALES & INSTALLATION OF

- CERAMIC
- MARBLE
- GRANITE/SLATE
- REPAIRS

TELEPHONE 873-4668

CRITERION CARPET & RUG CO. LTD.

Residential - Commercial - Industrial

- BRAND NAME CARPETS
- SHOP-AT-HOME SERVICE

OPEN SATURDAY 10 A.M. - 4:30 P.M.
128 GUELPH ST. 877-1012

CORE'S WELL DRILLING

4th & 5th Working Generation

COMPLETE WATER SYSTEMS INSTALLED

878-4515 MILTON

LEROY WILLIAMS CONSTRUCTION

BRICK, BLOCK AND STONE

"Fireplaces A Specialty"

(416) 796-8589

BAILEY HEATING & COOLING

RESIDENTIAL - COMMERCIAL

SALES - INSTALLATION - REPAIRS

All Types of Heating

- Oil
- Gas
- Electric

ICC HEAT HEATING AND COOLING PRODUCTS

A Total Home Comfort Service

FREE ESTIMATES 878-4821

B & K WINDOWS

ALUMINUM, VINYL, THERMAL REPLACEMENTS

FASCIA - SOFFIT - EAVESTROUGH

FREE ESTIMATES 877-3769

CLASSIC HARDWOOD FLOORS

REFINISH & REPAIRS to Old Floors & New Floor Sales & Installations

Written Warranty - Reasonable Rates

848-0888

Pager 334-8687

TWICE AS GOOD RENOVATIONS

Interior - Exterior

Your Total Home Improvement Specialist

Brian Simpson 875-9964 Barry Simpson 853-0802

DREAMSCAPE LANDSCAPING & LAWN SPRINKLER

* WINTERIZING *
* SNOW REMOVAL *

873-1917

GORDON W. SCHULTZ EXCAVATING INC.

All Phases of Excavation!

875-1548 SNOW REMOVAL

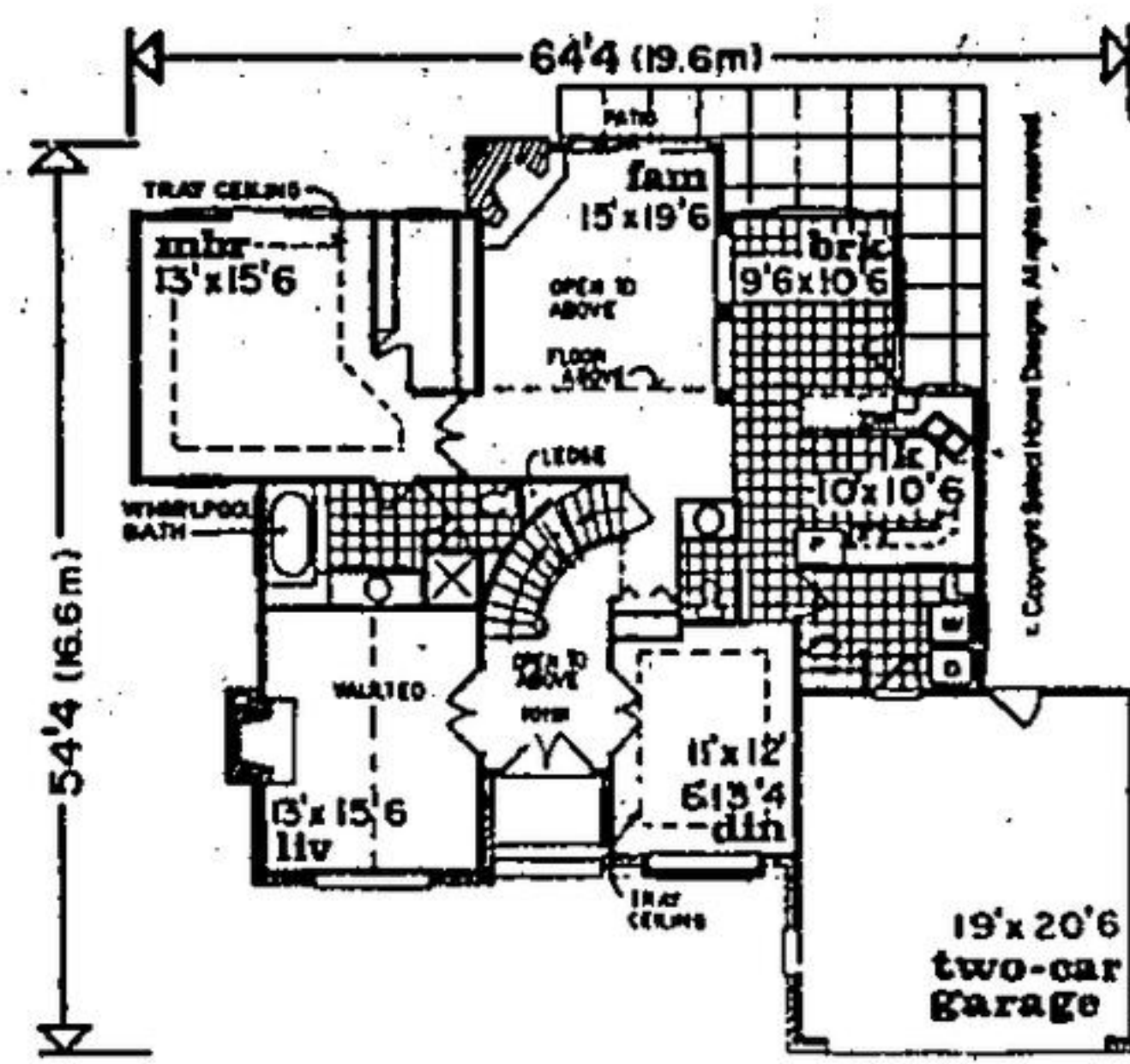
HOME OF THE WEEK

Brought To You By:

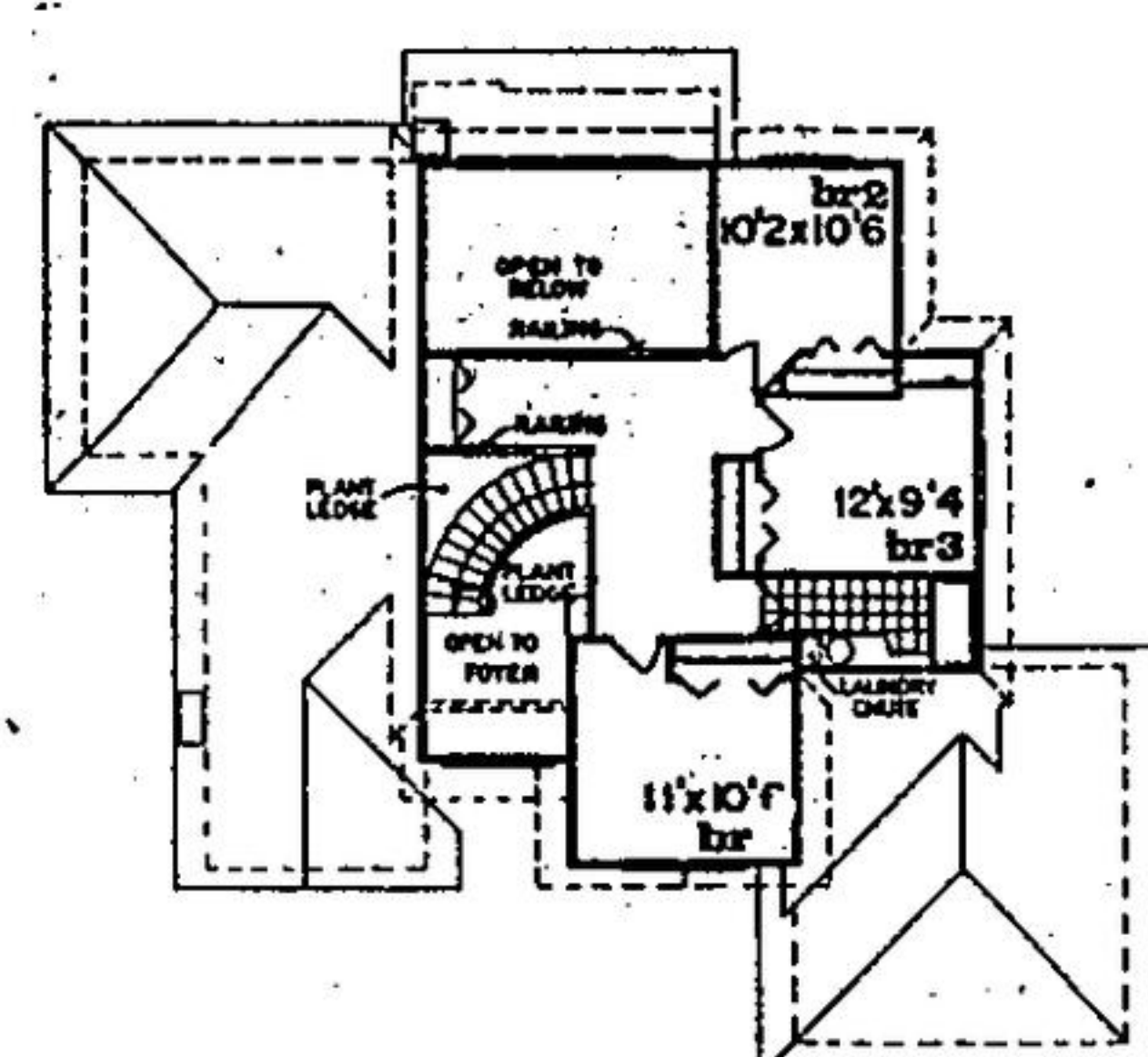
HALTON HILLS MECHANICAL



GALLERY VIEWS FAMILY ROOM BELOW



first level 1725 sq. ft.



second level 698 sq. ft.

Gently arched windows and brick detailing distinguish this four bedroom 2,423 square foot family home. The vaulted foyer opens to a sweeping curved staircase, brightly lit by a tansom window. Double French doors flanking the foyer lead to the cross hall living and dining rooms. Tray ceilings enliven the dining room while vaulted ceiling and fireplace, enhance the living room. The vaulted family room offers a corner positioned fireplace, view of the second level

gallery and sliding glass access to the rear patio. Columns provide visual separation of the family room from the breakfast room and kitchen. The efficient, U-shaped kitchen has abundant counter space and step saving configuration.

The main level master suite boasts a tray ceiling, spacious walk in closet and ensuite with raised whirlpool spa. Upstairs the railed gallery views the foyer and family room below. The three additional bedrooms share a main bathroom with laundry chute and soaking tub.

Send for Canada's largest plan book with over 500 home plans, including a wide variety of architectural styles, from luxurious brick manors to affordable

bungalows, only \$8.95 (including shipping and GST). To order using Visa or MasterCard call toll free 1-800-663-6739 or send cheque or money order to Home of the Week, c/o The Halton Hills Herald, 382 West Broadway, Vancouver, B.C., V5Y 1R2. Trained consultants are standing by Monday to Saturday, to take your order for the plan book or plan no. 91-2409. Please feel free to request any information you may require before placing your order.

BENTLEY'S WATER SERVICE LTD.

WATER COOLERS RENT OR BUY

Water Softening Salt Bottled & Bulk Water

143 HUPPESING MILTON 875-1548

TWISS FUELS LTD.

LUBRICANTS

24 HR. EMERGENCY BURNER SERVICE

INSTALLATIONS

878-6380

32 Steeles Avenue East MILTON, ONTARIO

PLUMBING SUPPLIES

- Acrylic Bath & Shower Units
- Whirlpools
- Spas • Pedestals
- Vanities & Medicine Cabinets

Since 1958 -

877-2293 798-7786

HOWELL PLUMBING SUPPLIES LIMITED

PLUMBING SHOWROOM

11 Armstrong Ave., Georgetown

ART CONSTRUCTION

Interior - Exterior

Additions - Renovations

Kitchens - Rec Rooms

Commercial - Residential

(519) 853-4824

HALTDESIGN

ARCHITECTURAL DESIGN SERVICES

- Complete designs for custom homes, additions and renovations
- We offer free consultation as well as very reasonable rates
- Our professionally engineered plans will save you thousands when building

"TOGETHER WE'LL PLAN YOUR DREAM"

873-7105

BOUCHER ALUMINUM

NAME BRAND ALUMINUM SIDING

ALCAN

- Soffit & Fascia
- Seamless
- Eavestrough
- Doors
- Windows

SELECTION OF COLOURS - FREE ESTIMATES -

877-8830

FIREPLACES, WOOD STOVES, GAS INSERTS

VISIT OUR SHOWROOM BURN MODELS ON DISPLAY

454-0497

MEMBER **The Baroque Clinic**

155 CLARK BLVD., BRAMPTON

HALTON HILLS MECHANICAL

Residential & Commercial Plumbing, Heating & Air Conditioning

SALES - SERVICE - INSTALLATION

25 Years Experience

PROPRIETORS LARRY DESJARDIS - GERRY GOSSELIN

CALL RHEEM AND LIVE WARMLY EVER AFTER

BUS. 873-2137 FAX 873-1911

BASEMENT LEAK? CALL G. PAYNE CONTRACTING

- MODERN METHODS • FREE ESTIMATES
- 10 YEAR GUARANTEE
- POURED OR BLOCK FOUNDATION

416-455-3425

"CUSTOM DESIGNED... WITH YOU IN MIND!"

BELWOOD KITCHENS PLUS

- European Traditional Styles
- Extensive Selection Of Cabinet Styles
- Kitchen-Bathroom Renovations
- Appliances

QUALITY WORKMANSHIP AT AFFORDABLE PRICES!

LES 877-1902 RALPH 877-7850

WATER PUMP Sales & Service

GOULDS WATER SYSTEMS

Serving Mississauga, Erin & Halton Hills

BOYES PLUMBING

for all your plumbing needs

855-4232

Superior

★ AUTO PROPANE ★

RESIDENTIAL - COMMERCIAL & INDUSTRIAL

GUARANTEED SUPPLY GUARANTEED 24 HOUR SERVICE

MILTON 878-2318 GUELPH 822-7780