



# CAPITAL FORD'S MARKDOWN MADNESS

WAS \$14450 NOW \$13650



1988 JEEP CHEROKEE - 4X4, 6 Cyl. Loaded. Stk. No. 9206

WAS \$14999 NOW \$13976



1991 TAURUS - 6 Cyl. Auto, Air. Stk. No. 9131

WAS \$10595 NOW \$9785

**1989 PONTIAC  
6000**

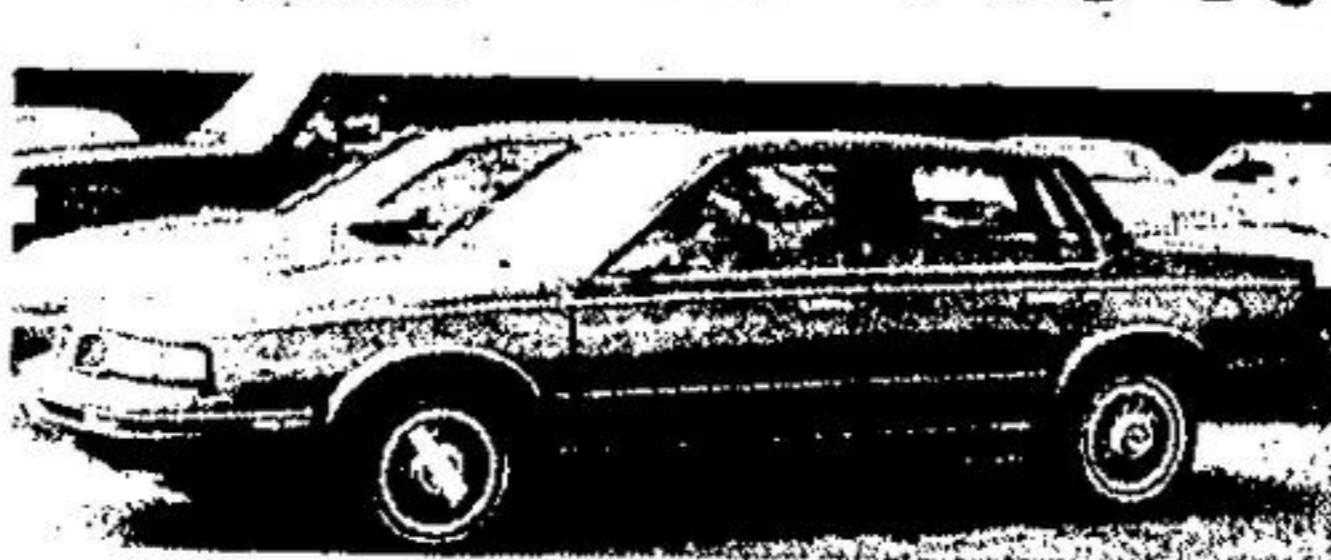
6 Cyl., Automatic, Air  
Stk. No. 9185

WAS \$9999 NOW \$9495



1989 MUSTANG LX - 4 Cyl. Air. Stk. No. 4133A

WAS \$11150 NOW \$10540



1988 CUTLASS CIERA - 6 Cyl. Air. Stk. No. 9186

WAS \$14900 NOW \$13500



1987 LINCOLN TOWNCAR - 8 Cyl. Loaded. Stk. No. 9125

WAS \$5995 NOW \$4999



1987 TEMPO 4 DR. - 4 Cyl. Air. Stk. No. 9104

WAS \$5990 NOW \$4977

**1985 CROWN  
VICTORIA 4 DR.**

8 Cyl, Air Conditioning  
Stk. No. 90116

WAS \$11950 NOW \$9786



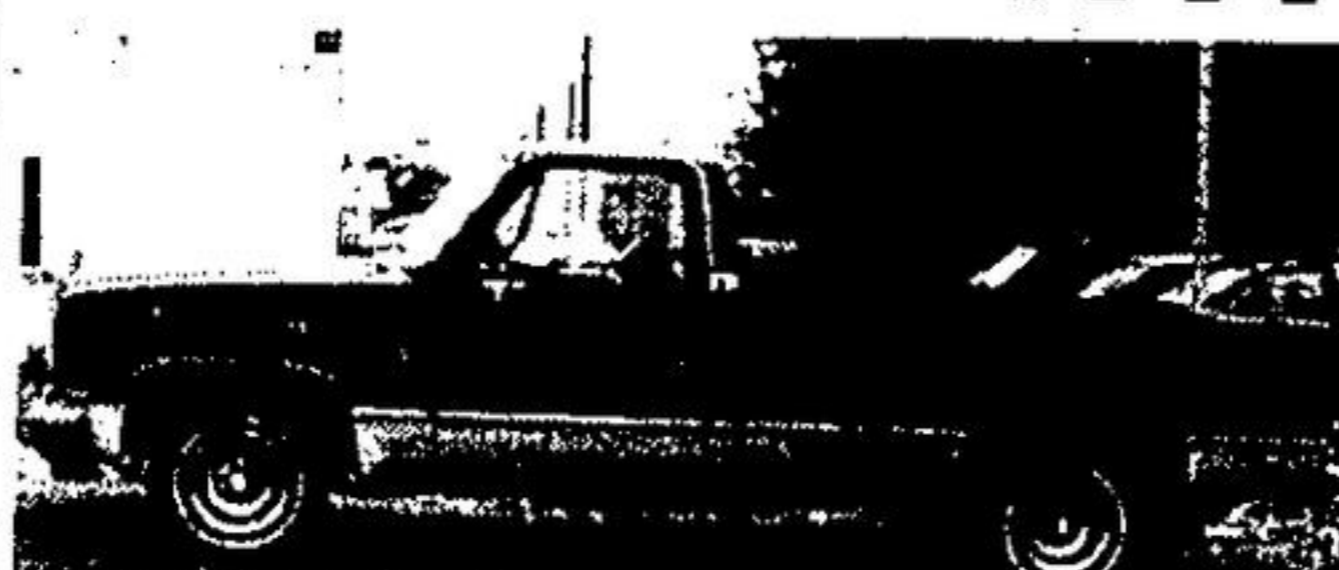
1987 CHEVY BLAZER - 4X4, 6 Cyl. Auto. Stk. No. 9001

WAS \$10995 NOW \$9175



1986 RANGER SUPERCAB - 4X4, 6 Cyl. Auto, Air. Stk. No. 80194A

WAS \$5995 NOW \$4999



1984 GMC PICK-UP - 8 Cyl. Auto. Stk. No. 81129B

WAS \$9875 NOW \$8850



1986 F-250 - 8 Cyl. Auto. Stk. No. 90145

# CAPITAL



SALES • LEASING

PARTS • SERVICE

— 2 LOCATIONS —

**ACTON**  
MAIN ST N  
(HWY. #25)  
853-2370

**and GEORGETOWN**  
HWY #7  
AT DELREX BLVD  
873-1626

A-X-Z PLANS WELCOME

**#1 IN  
CUSTOMER  
SATISFACTION**