

From an open-air fruit & vegetable stand to the World's Largest Retail Food Outlet

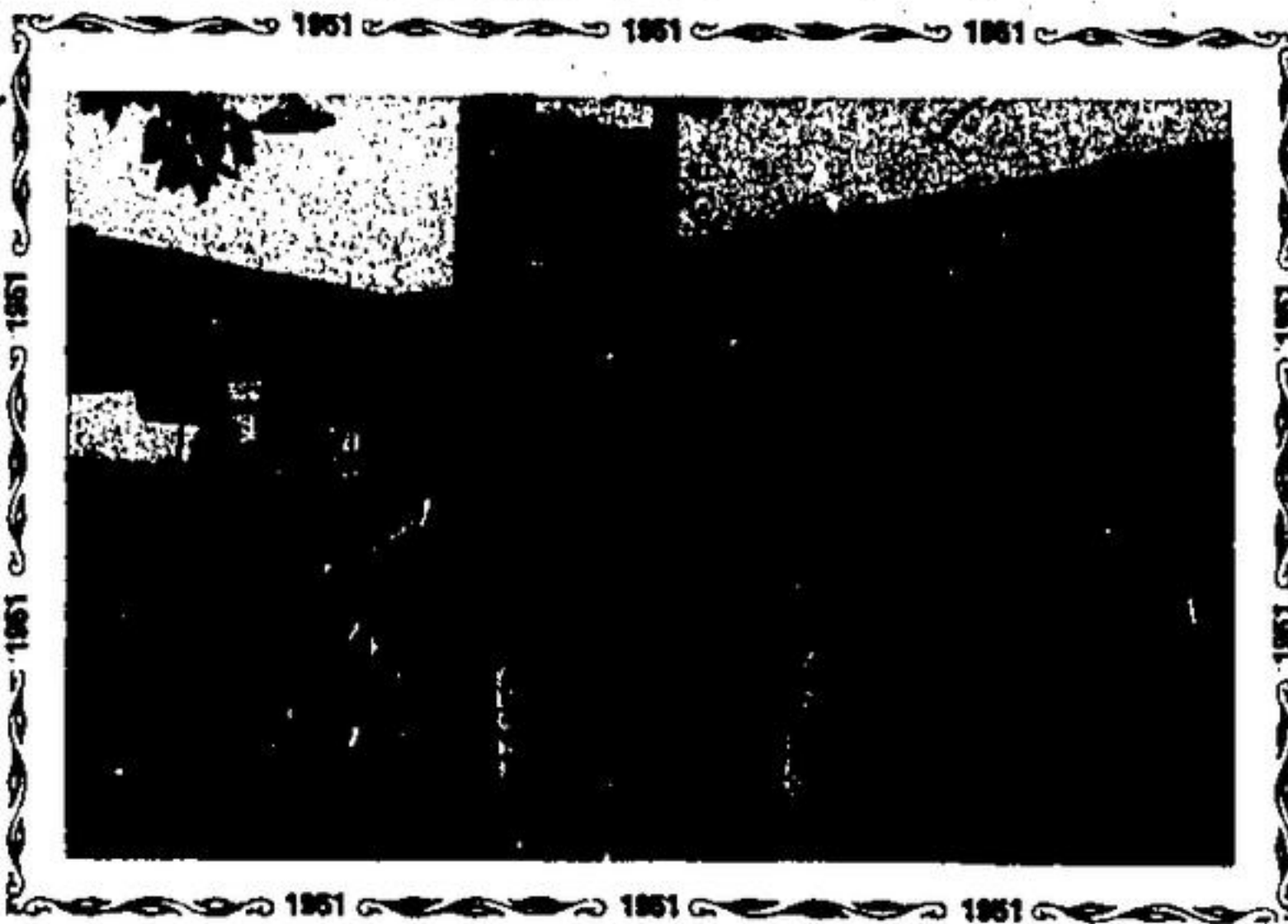
IN THE BEGINNING

The Stavro family came from Europe, but quickly became proud Canadians. "When I was about ten, I marched on the 24th of May carrying the Union Jack," recalls Steve, "and the flag was so big, that I got blown over."

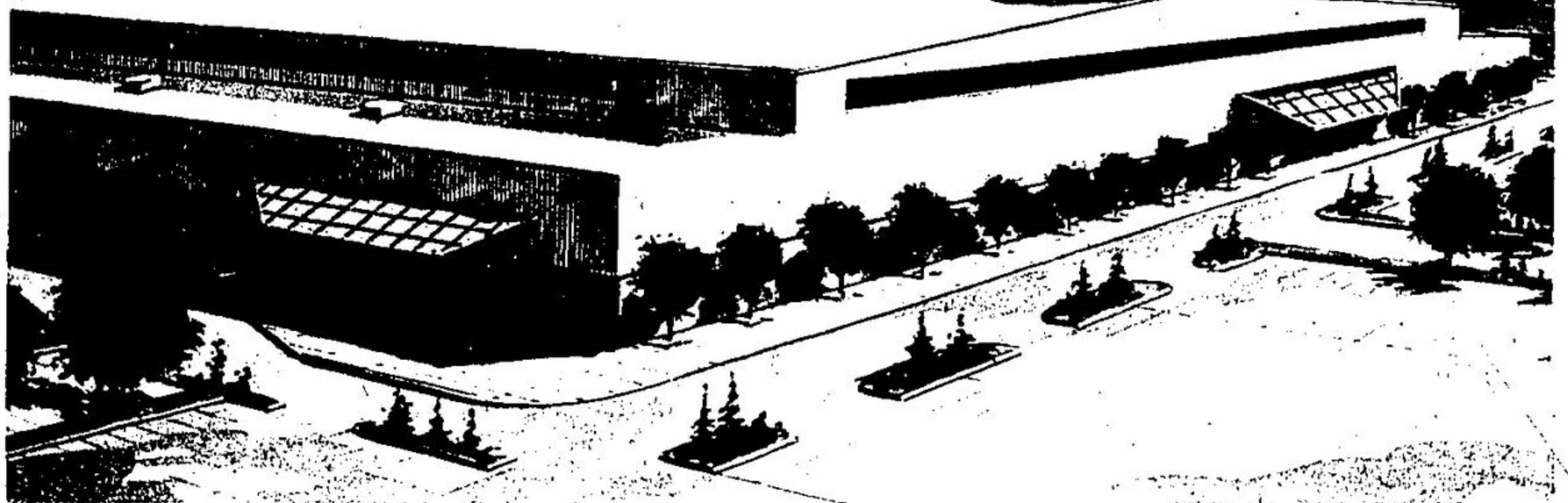
Knob Hill Farms started in 1951 as an open air produce stand in Toronto's east end, with a plywood sign cut and painted by Steve Stavro himself. Who would have thought then that this would grow into Canada's largest independently owned retail food chain?

By 1959 Knob Hill Farms had expanded to nine locations, including four supermarkets, but Stavro sold them all to open one store - bigger than a supermarket - a "Food Terminal".









Now, 40 years later, with several Food Terminals opened in the years indicated, it's food retailing history as detailed in capsule form below.



1991



The Cambridge / Waterloo Food Terminal comes to reality in 1991

| | | |
|--|--|---|
|  <p>1962 Markham Woodbine North at Hwy.7</p> <ul style="list-style-type: none"> • the original retail "Food Terminal" • added tent in summer to increase space • most of today's KHF managers started here as buggie boys • 55,000 sq. ft. with expansion planned |  <p>1971 Pickering Hwy.2 near Brock Rd.</p> <ul style="list-style-type: none"> • much of property was swampy and took tons of gravel to fill • shop by the box introduced here • 50,000 sq. ft. with expansion planned |  <p>1975 Lansdowne 222 Lansdowne Ave at Dundas St. West</p> <ul style="list-style-type: none"> • the old National Cash Register plant was converted into KHF's third Food Terminal • at 140,000 sq. ft. was largest retail food outlet in North America when it opened • has been a training store for many KHF employees |
|  <p>1977 Cherry St. 222 Cherry St. south of lift bridge</p> <ul style="list-style-type: none"> • because located in Toronto dock area, also known as the Harbour Food Terminal • in terms of people per square foot, this is KHF's busiest store • 40,000 sq. ft. with expansion planned | <p>Sally and Steve Stavro have worked hard to build Knob Hill Farms into the largest independently owned retail food chain in Canada. Backed by a loyal staff, many of whom have been with them since the early 1960s, they are friendly, hands-on owners who visit all their stores regularly.</p>  |  <p>1978 Mississauga Dixie Value Mall South of Q.E.W.</p> <ul style="list-style-type: none"> • originally a Savette Store with shopping on two floors • recently expanded so shopping all on one level • combined shopping and storage over 200,000 sq.ft. |
|  <p>1983 Oshawa First Ave. between Simcoe & Ritson</p> <ul style="list-style-type: none"> • renovated and added to main shell of former Ontario Malleable building • was the World's Largest Retail Food Outlet when it opened with its 256,000 square feet | |  <p>1984 Head Office - Distribution Centre Toronto</p> <ul style="list-style-type: none"> • was General Electric plant where turbines used at Niagara Falls generating station were built • over 365,000 sq. ft. with giant coolers and freezers for meat, produce and frozen food |

Meet the Knob Hill Farms store management Team...

| | | | | | | | | |
|---|---|---|---|---|---|---|---|---|
|  |  |  |  |  |  |  |  |  |
| Markham Chris Rapos 20 years with KHF | Pickering/Durham Pat Willems 17 years with KHF | Lansdowne Doug MacDonald 22 years with KHF | Cherry Street Paul Craigie 23 years with KHF | Mississauga Louie Nicolaou 16 years with KHF | Oshawa / Durham Mike Nicolaou 23 years with KHF | North York Jim Stavropoulos 20 years with KHF | Distribution Centre Chris Rametta 20 years with KHF | Cambridge / Waterloo John D'Urso 17 years with KHF |