

### Regional council

Only after Halton Hills councillor Rick Bonnette voiced his concerns over washroom facilities did Halton Regional Council approve Wednesday a recommendation for renovations to go ahead at Halton Centennial Manor.

Coun. Bonnette explained he felt there was an insufficient amount of washroom facilities in the architectural design proposal and that this could hamper the dignity of those living at the manor. He stated that beyond this concern, he is in favor of the renovation project.

In response to Mr. Bonnette's concern, Burlington Coun. James Grieve stated he believed there would be adequate washroom facilities and that there isn't a need for private washrooms.

In the proposal, a washroom is equipped with a sink, toilet and shower, and is to be shared by two residents.

The new manor facility will house 200 residents in eight 25-bed clusters referred to as "houses." The eight "houses" are arranged in four wings of two stories, each with one complete "house" per floor. The new design includes lounges, activity areas and is completely wheelchair accessible.

The level of accessibility provided will be higher than required by Ontario Building Codes in order to meet the needs of the elderly disabled.

According to a staff report, the Ministry of Community and Social Services has confirmed in writing that funding for the renovation of the Halton Centennial Manor will be forthcoming over the next three years with the bulk of the funding being provided in their 1992/93 fiscal year.

### Graduation



Jane Patrice Kerby, daughter of Pearl Kerby and Dr. J.R. Kerby, and sister of Sandy received a Master of Science Degree in Computer Science from the University of Guelph. Convocation ceremonies were held June 6, 1991. Prior to this Jane received a combined Honors Bachelor Degree in Computer Science and Economics. She is currently working on term as a Physical Scientist for Environment Canada and has been nominated as a Young Scientist for the Government of Canada. Her pre-university education was acquired in Georgetown.

### OFFICE MAGIC

877-2300

FOR ALL YOUR OFFICE & STATIONERY NEEDS

265 Guelph St., Georgetown 1

GIC RATE  
**10.4%**

Rate Subject To Change Without Notice



**MONEY CONCEPTS**  
FINANCIAL PLANNING CENTRE

348 Guelph St. Georgetown 873-1877

# Just Announced.....

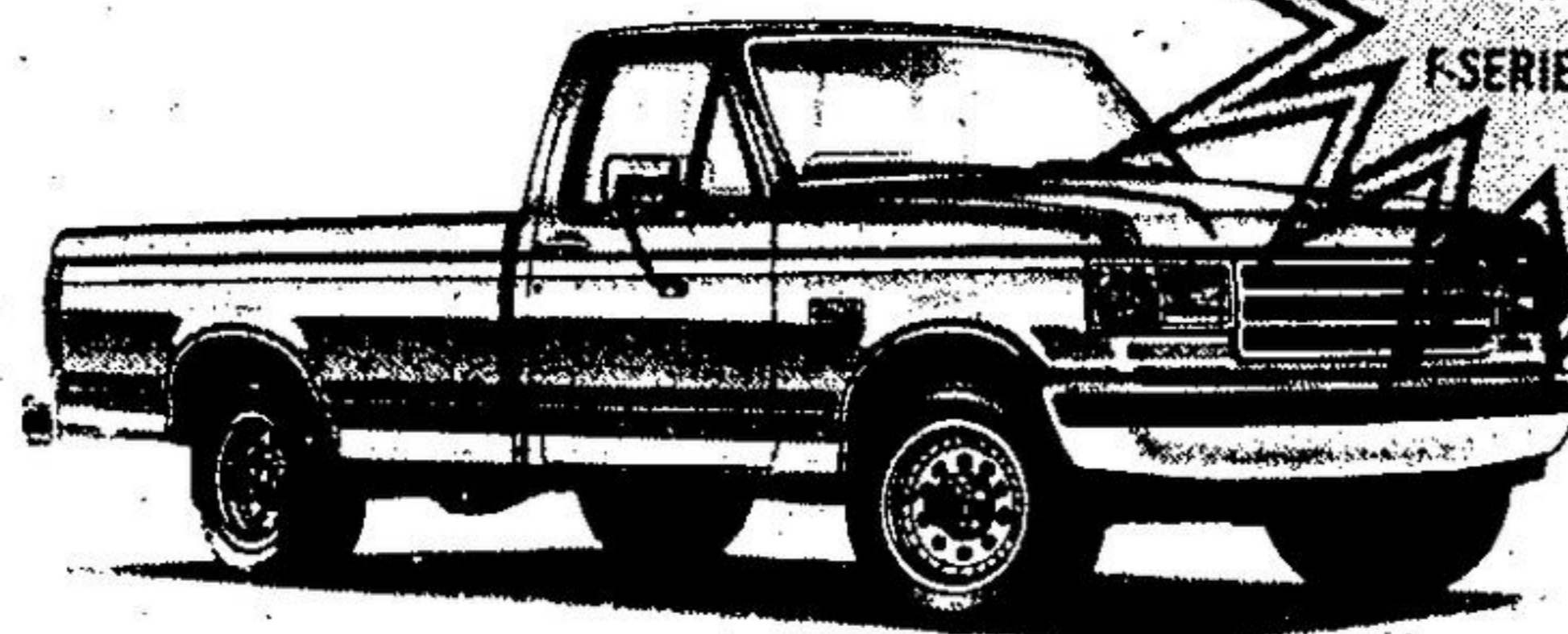
## 6.9%

### FINANCING\*

UP TO  
48 MONTHS  
OR  
\$1500  
CASH BACK

## ON F-150 SERIES

### GREAT SELECTION!



STK No. 1177

ONLY  
**\$14,495\***  
OR  
\$299<sup>95</sup>\*\* MTH.

VALUE PACKED  
"XL PLUS"

featuring

- Fuel Injected 6 Cylinder Engine
- Electronic Automatic Overdrive
- Power Steering & Power Brakes
- XL Trim
- Full Insulation
- Cloth Bench
- Cruise/Tilt
- XLT Carpet
- Forged Aluminum Rims
- AM/FM Stereo Cassette With Clock
- P235 Tires AND Many More Value Features
- Air Conditioning
- Light Group
- Body Side Mouldings
- Dual Paint Stripes
- Block Heater
- Payload Package

\*Freight (\$435), Taxes and Licence Extra. Rebate \$1500 Assigned To Dealer. Offer Mutually Exclusive.  
\*\*Based on 48 Months Red Carpet Lease With Purchase Option, 100,000 Kms. Allowable (6¢/Km. Excess), Freight \$435, All Taxes and Licence Extra. Security Deposit \$350 and 1st Month Required. Rebate Assigned To Dealer. O.A.C.

VALUE PACKED  
"RANGER CUSTOM"

featuring

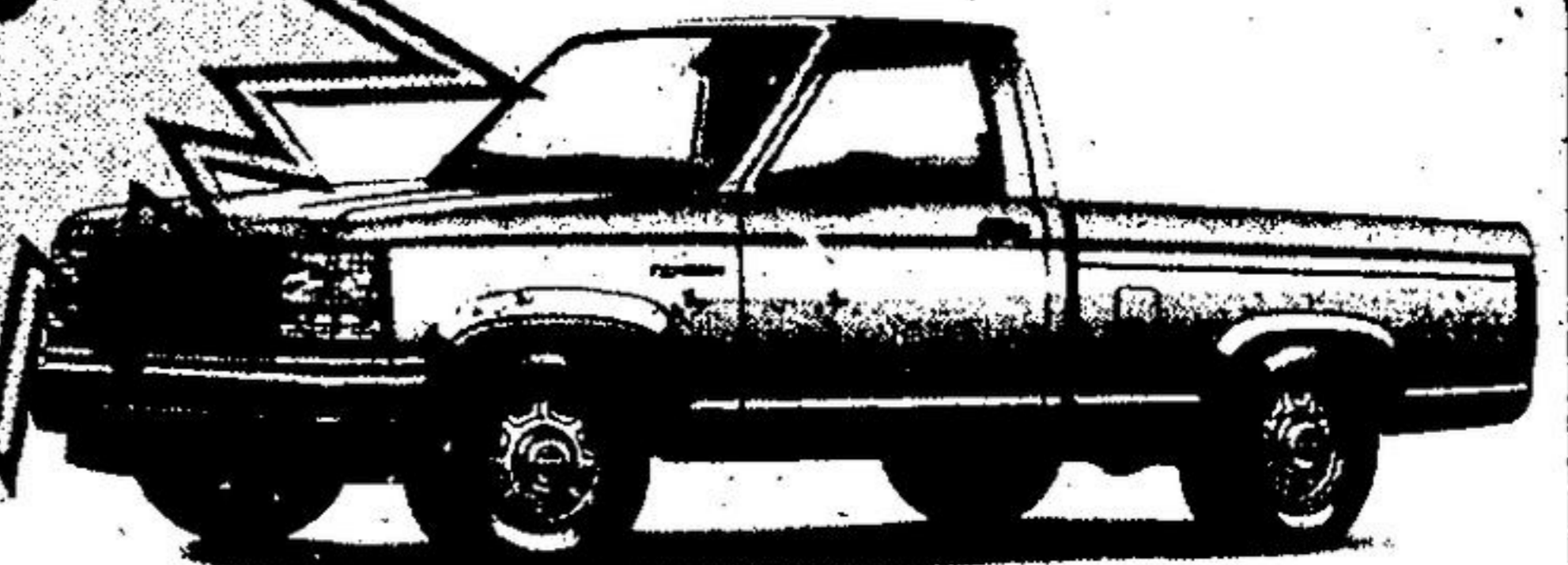
- 2.3 L Electronic Fuel Injected Engine
- 5 Spd. Overdrive Transmission
- Power Steering & Power Brakes
- Deluxe Wheel Trim
- P215 Steel Belted Radials
- Deluxe Split Cloth Bench
- Electronic AM/FM Stereo With Clock
- Halogen Aero Headlights
- Full Headliner & Insulation
- Full Instrumentation Inc. Tachometer
- Interval Wipers
- PLUS All Standard Features!!

ONLY  
**\$9545\***  
OR  
\$206<sup>85</sup>\*\* MTH.

STK No. 1264

## RANGER

— \$750 CASH BACK  
OR 8.9% FINANCING



Re Ranger:

\*\*8.9% financing plus the specific cash back stated in each offer constitutes each offer and cannot be combined with any other offer. Retail buyers choosing a reduced finance rate in lieu of a straight cash rebate are eligible for 8.9% financing over a maximum 48 month term. On approved credit. Example: For \$15,000 financed over 48 months at 8.9% APR, the monthly payment is \$372.37, the cost of borrowing is \$2,883.36, and the total to be repaid is \$17,883.36. Assuming a rebate of \$750 as an alternative, should you choose a reduced financing rate instead of a cash rebate, legislation requires that the amount of the rebate must be included in the cost of borrowing in order to arrive at an effective interest rate. In the example given, the effective rate of interest would be 11.87% over 48 months and the total cost of borrowing including the rebate not taken would be \$3,833.36 for 48 months.

\*Re F-150 — Financing for a maximum of 48 months subject to approval, e.g. \$15,000 at 6.9% APR (Annual Percentage Rate) — \$338.38 monthly for 48 months. Cost of Borrowing \$2,706.96 with \$1,500 rebate not taken, statutorily recalculated C.O.B. in dollars and percentage is \$3,706.96 and 11.3%. Cost of borrowing will vary depending on the amount financed and term of loan.

# PARK LINCOLN-MERCURY

Located Conveniently in Halton Hills  
on Highway 7 - between Georgetown and Acton

798-7822



877-2261