



# DOMINION SEED HOUSE & COUNTRY GARDEN CENTRE

## SUMMER FLOWERING BULBS GREAT SELECTION

- GLADS • TUBEROUS BEGONIA
- LILIES
- MANY OTHER NOVELTY TYPES

**3-TIER LIGHT STAND**  
REG. \$350<sup>00</sup>  
**NOW \$250<sup>00</sup>**

**TABLE TOP LIGHT STAND**  
REG. \$99<sup>00</sup>  
**NOW \$75<sup>00</sup>**

## DORMANT OIL KITS

Make certain over-winter bugs don't damage your trees this summer

REG. \$16<sup>95</sup>  
**ON SALE \$14<sup>95</sup>**

Over 1,300 Varieties

## FLOWER & VEGETABLE SEEDS

- Top Quality
- 1991 All American Selections

**15% OFF**  
**GRASS SEED SALE**

**OSECO**

Canada's Leading Turf Specialists

PRICES VALID UNTIL APRIL 26, 1991

**DOMINION SEED HOUSE**  
Corner of Maple Ave. & Guelph St.  
**GEORGETOWN**

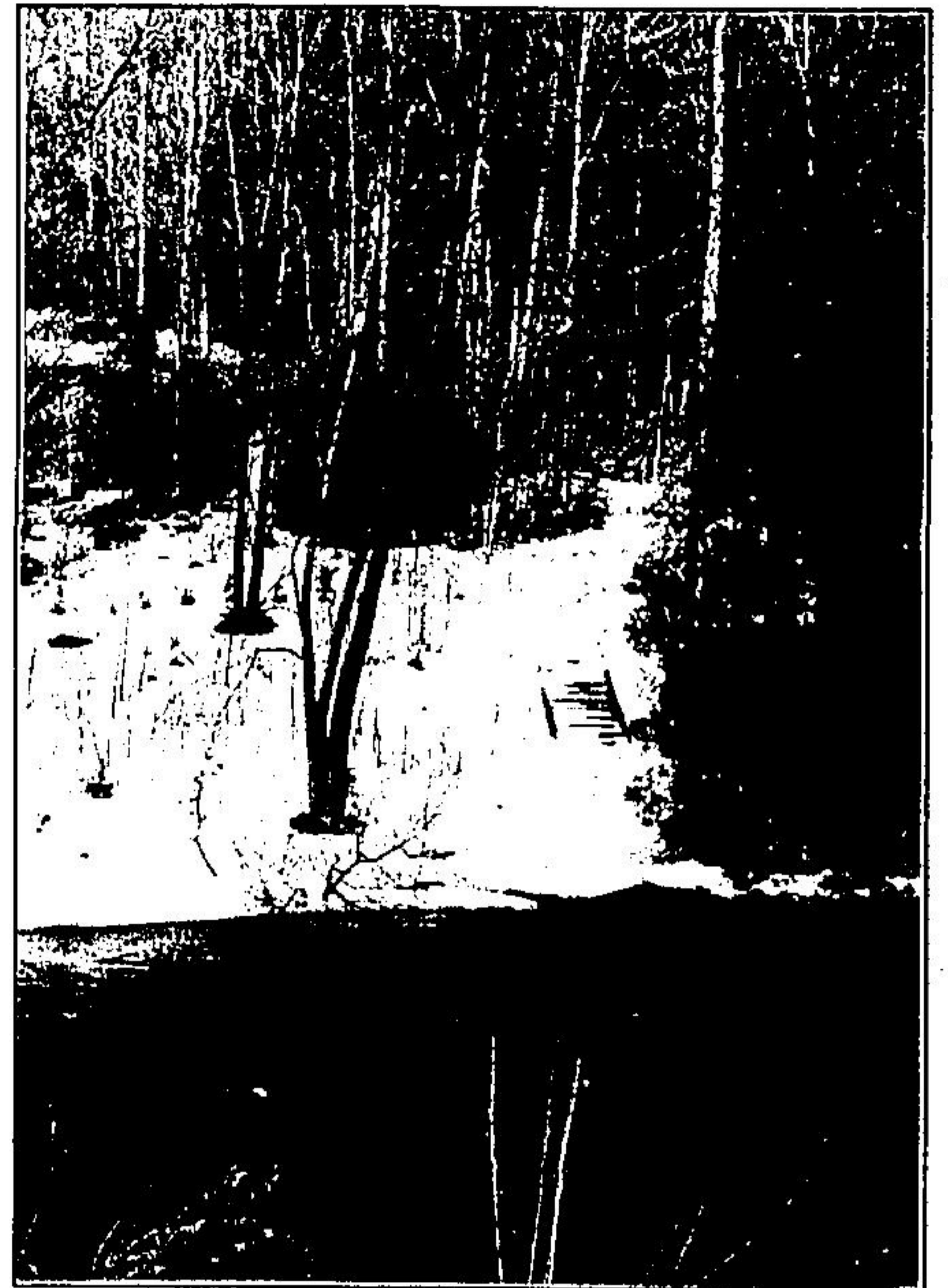
**HOURS:**  
Mon.-Fri. 9-6  
Saturday 9-5  
Sunday 12-4

**877-2460**

## EASTER FLOWERS

POTTED LILIES  
HYDRANGEAS  
MUMS

**CLOSED GOOD FRIDAY and EASTER**



## Discover the world

Walking on the trails running through the Credit Valley Conservation Area near Belfountain is a great way to relax and discover nature. There are many walking trails in the Caledon-Dufferin area that lead walking and hiking enthusiasts to a variety of landscapes.

## Anglers and Hunters love Dufferin's forest

Within the vast expansions of a forest lies a world of wonder and excitement, waiting for admirers to discover nature's bounty.

This is the attraction for George Spuler, a member of the Orangeville Anglers and Hunters Club, who loves to visit the Dufferin County Forest.

The forest, spread over several thousand acres of land, is a popular hiking spot located north on Airport Road, south of Creemore.

### IT'S ALWAYS DIFFERENT

"It's always different," said Mr. Spuler of each walk he takes. "You see something new every day."

The forest is heavily wooded with many trails winding their way through the rows of towering trees, he said.

The trails are quite well groomed and very wide as most of them are fire breaks, routes for the firemen to use in case of fire.

Although there are some areas in the forest that slope, Mr. Spuler said that the trails are, for the most part, easy to travel on.

Besides the incredible show of nature, the big feature for Mr. Spuler is the wildlife. He enjoys turkey hunting and watching the rabbits and deer.

"Turkey hunting is becoming quite popular in the area and there is a beautiful bird population up there," Mr. Spuler said.

It costs nothing to walk through the breathtaking scenery of the Dufferin County Forest and there is a parking lot on the side of the road for users.

Mr. Spuler also pointed out the appeal of the Anglers and Hunters 120 acres of land, located at Blind Line and 5 Sideroad.

"There are numerous trails, four ponds, and incredible wooded areas," Mr. Spuler boasted.

Although much of the countryside is very hilly, he said that are some flat areas to explore.

Entrance to the area is only possible if you're with accompanied by a member. Those who join also gain access to their campground and some great fishing, Mr. Spuler said.

"Once you visit two or three times you love so much you'll join," he said.