



Focus On Agriculture

Taking a bite out of fresh apples from Al Ferri and Sons Country Apple Store at R.R.2, Norval, are (left to right) Amy Palmer, Sherry Benson, Patrice Fendley, Ryan Murray and Chris Lechien. Ray Ferri, handing out the apples, took the Grade 2 class from Park Public School on a tour of the family apple farm to show the children what kind of work is

done when there are no apples to harvest. The trip is part of the school's focus on agriculture. For the month of March, the entire school will be learning about different aspects of agriculture and will present their knowledge and projects about farming at an open house May 2. (Herald photo by Lisa Boonstopple-Pot)

Willow Park residents may get new reprieve

By BEN DUMMETT
The Herald

Norval's Willow Park residents may be permitted to stay in the mobile home park for at least a few months longer than originally expected.

Residents were scheduled to be off the property by May 15. The land has been expropriated by the Credit Valley Conservation Authority because of its location in the Credit River Floodplain. According to the CVCA the residents' lives would be put in danger if a severe flood happened.

However, CVCA Manager of Water Resources Charlie Wrote said Tuesday the authority's Executive Committee decided last Friday an extension to the vacancy deadline would be granted. "It would be in the order of months

and not indefinite," he said.

The executive committee must still decide on the length of the extension and what conditions will be applied to it. That will happen within the week, he added.

Halton Hills council Monday directed Town staff to inform the authority of its support for an extension. Mayor Russ Miller said Monday he understood the extension would apply to mid-August.



NON-DENOMINATIONAL
(PENTECOSTAL)

**ALL PEOPLES CHURCH
DELIVERANCE CENTRE**

41 Finchgate Blvd., Bramalea
(S.W. Corner Finchgate/Hwy. 7)

- Bible Study
- Worship • Deliverance

Sunday 10:30 a.m. & 7:00 p.m.
Wednesday 8:00 p.m.

We Provide:
— Children's Church
— Nursery Service

English-to-Italian Translation



Pastor: George A. LeRoy
792-2176

**CHURCH OF
ST. ALBAN THE MARTYR**

(Anglican Church of Canada)

537 Main St., Glen Williams
(Mountain & Main Sts.)
416-877-8323

RECTOR:
Reverend Carol A. Simmons, L.Th.

Sunday Services
8:00 a.m. & 10:30 a.m.
Church School/Nursery
10:30 a.m.

COME JOIN US
A WARM WELCOME AWAITS YOU

NEW APOSTOLIC CHURCH

"WHERE LIVING APOSTLES ARE ACTIVE TODAY"

Sunday School — 9:00 a.m.
SERVICES

10:30 a.m. & 5:00 p.m.
Wednesdays — 8:00 p.m.

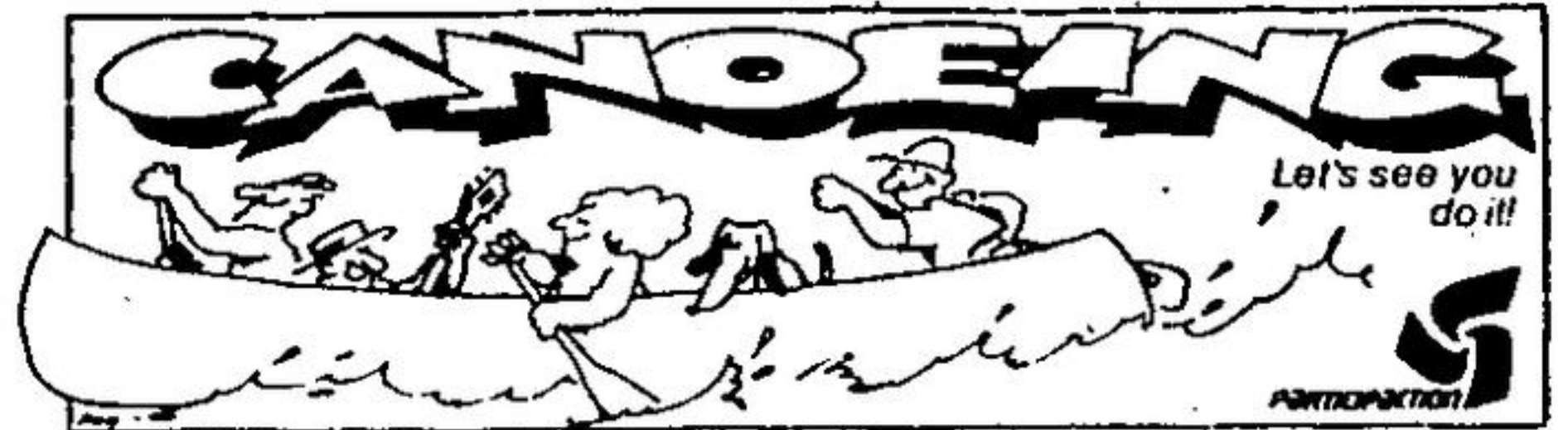
HALTON HILLS CONGREGATION

150 Main St. South, Acton
Rector — Rev. Stephen Wagner
853-4627

"A HEARTY WELCOME TO ALL"

Youth Stampex

Youth Stampex, a stamp show for young people, will hold its annual exhibition on Saturday, April 6 from 9 a.m. to 4 p.m. at White Oaks Secondary School, Oakville. The show, featuring stamp dealers and stamp exhibits by school children in Halton County schools, is open to the public. The show will also feature workshops, games, prizes, giveaways and contests. Everyone welcome. For more information, call (416) 845-0515. W.O.S.S. is on McCraney St. (north of the QEW, west off Trafalgar Road).



The 
Newfie Store

FOR THAT FRESH, FRESH CATCH OF THE DAY
— PLUS A FULL LINE OF PURITY PRODUCTS



• ORANGE ROUGHY \$4⁹⁹ LB.

• MUSSELS \$1⁴⁹ LB.



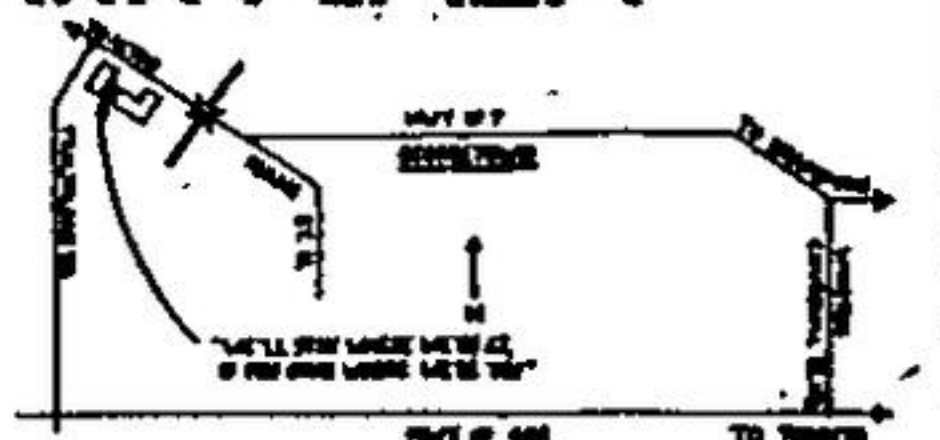
• LARGE SHRIMP (41-50 CT.) \$5⁹⁹ LB.

• SEA SCALLOPS \$6⁹⁹ LB.

MOORE PARK PLAZA

74C Main St. N.,
Georgetown, Ont.

(416) 873-6122



Learn to Drive...
and Survive



with
**Young Drivers of
Canada**

NEXT 4 WEEK COURSE

STARTS

WEDNESDAY, APRIL 10th

6:30-9:38 p.m.

877-0751

16 MOUNTAINVIEW RD. S., SUITE 302
GEORGETOWN

350,000 GRADUATES RECOMMEND



**YOUNG DRIVERS
OF CANADA**



\$2000 REWARD

For information leading to the recovery of a white tandem trailer & white Bolens back hoe & front end loader stolen from Country Lane, Wednesday, February 27th between 11 p.m. and 7 a.m. Persons will remain anonymous. Contact Dave at Country Lane.

- 877-2254 -