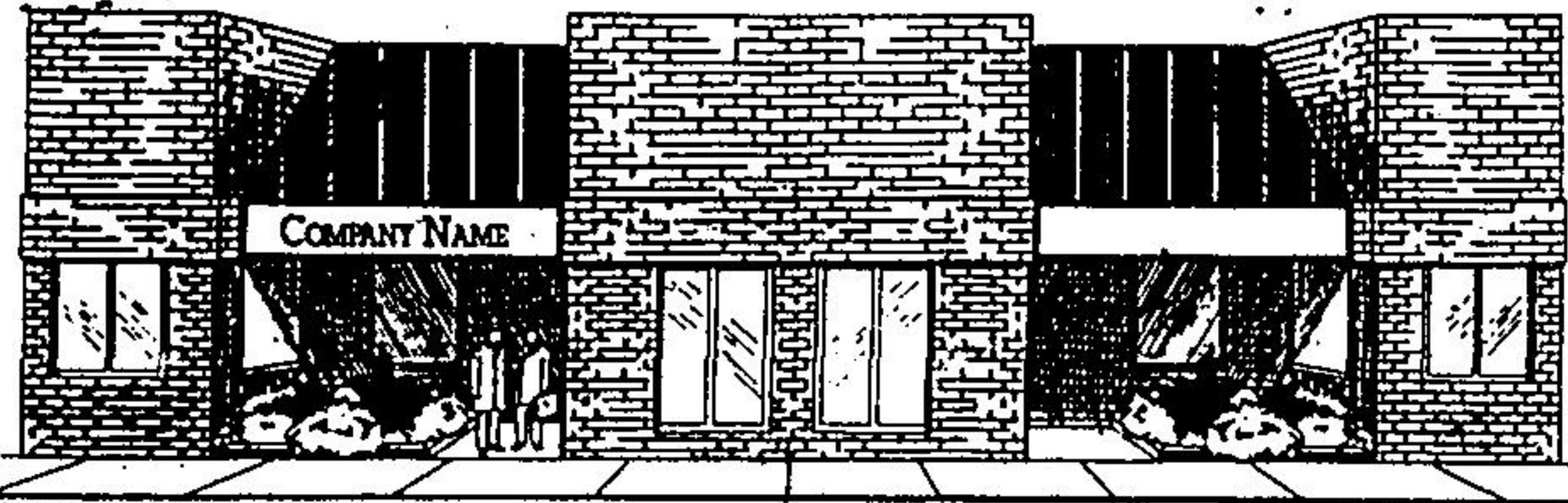


RICCUTO INDUSTRIAL PARK

A Member of the North Halton Construction Association

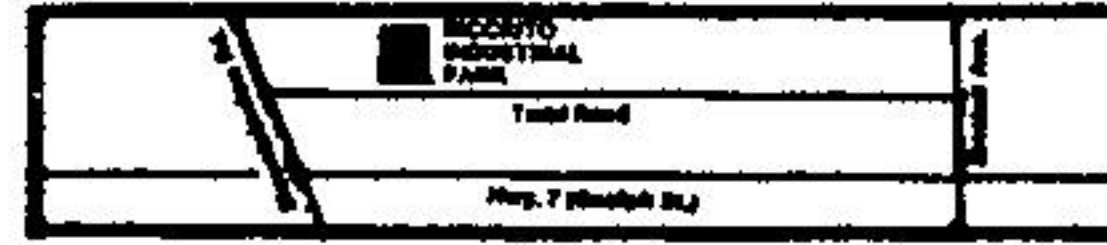


ARTIST CONCEPT

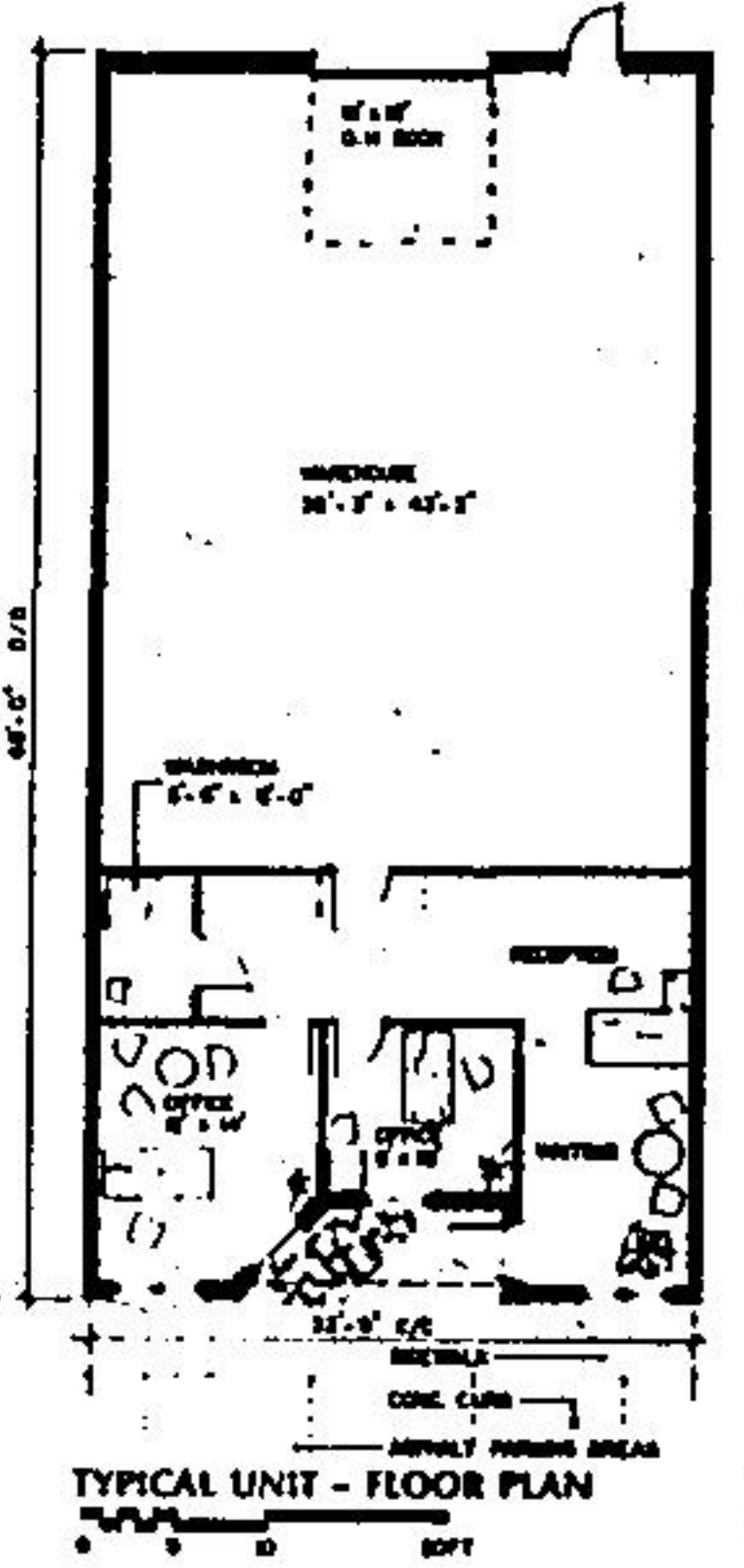
- QUALITY CONSTRUCTION — BRICK EXTERIOR
- ALUMINUM FRAMED WINDOWS AND DOORS
- PAVED PARKING AREAS, CURBS, LANDSCAPING
- BUILDING A 16 FT. CEILINGS
- BUILDING B 20 FT. CEILINGS
- SIGN PANEL
- DRIVE IN OR TRUCK LEVEL DOCK
- 10% OFFICE SPACE
- POWER — 100 AMP — 600 KV

FOR SALE OR LEASE

2100 SQUARE FEET AND UP
FOR SALE from \$85.00/sq. foot



CALL FRED HARRISON
SALES REPRESENTATIVE
873-0300 or 873-6218



NRS NATIONAL REAL ESTATE SERVICE

NRS BRAND REALTY INC., REALTOR
AN INDEPENDENT MEMBER BROKER

"Success Through Service"
Sales Rep. Assoc. Broker

ERIN
(519) 833-2773
24 Hour Answering Service
140 MAIN ST., #3, ERIN
TORONTO LINE 416-796-0640
FAX (519) 833-9354

NEW

CHARMING CENTURY HOME
NEW LISTING: 3 bedrooms, eat-in kitchen, dining room, living room with woodstove, main floor laundry. Suitable for home occupation, professional offices, hair salon, doctor, etc. Shows well. Asking \$184,900. Call Maida Lundy* to view. 06472

GOOD DEAL!
For 1/2 acre building lot in a desirable area just south of Erin Village. Make an offer! Asking \$99,000. Call Maida Lundy*. 06398

A HOME WITH A LIFESTYLE
Are you interested in a pool, spa and exercise room? This 3 bedroom, solid brick raised bungalow on 1/3 acre lot has walkouts to upper and lower decks, gigantic family room, and features too numerous to mention. Call Cathy Buckrell*. 06358

IN A SOLD MONTH

OVERLOOKS CONSERVATION
Quality built all brick family home on almost 1/2 acre landscaped lot on a quiet street in Erin. Walk to all schools and park. A great place for the kids! Call Diana Arnold*. 06308

\$329,000
PRIVATE 10 ACRE TREASURE with cozy, comfortable custom built bungalow with a fireplace, walkout to a sundeck and a large country kitchen. Great barn suitable for horses, workshop, garage, etc. Call Cathy Buckrell*. 06472

COMMERCIAL PROPERTY
SOUND INVESTMENT! Excellent location in downtown Erin. Retail space plus 2 apartments generating good income. Asking \$298,000. Call Maida Lundy*. 06472

NEW

PICTURESQUE 10 ACRES
EXCLUSIVE LISTING. Fenced property suitable for horses, with a 3 bedroom brick home. Living room/dining room combo, family room with fireplace, eat-in kitchen. Double car garage. Steel shed suitable for 3 horses. Priced to sell at \$279,000. For appointment to view, call Maida Lundy*. 06706

PRIVACY PLUS
VALUE AT THIS PRICE! This is an enticing traditional home on 10 beautiful acres. Complete separate in-law apartment. \$369,000. Call Cathy Buckrell*. 06358

ATTENTION HORSE LOVERS!
MINI-FARM LIVING on 10 acres of private seclusion. 3 bedroom home with 2 fireplaces, den or 4th bedroom, family room with walkout to pool. Custom built hip roof barn suitable for horses. \$379,000. Call Cathy Buckrell*. 06472

NEW

\$132,900.
Country living in your 4 bedroom, 2 storey home, in the quiet hamlet of Hopeville. An entrepreneur's haven with a 30' x 50' barn/workshop. Call Rick Curry* for details. 06718

JUST LISTED \$162,900.
Perfect starter or retirement home on quiet dead end street within walking distance of schools, churches and shopping. As neat as a pin, and completely finished including rec room. Gleaming hardwood floors, new broodloom, lots of cupboards, pretty landscaped lot. Call Diana Arnold*. 06308

SUPER HORSE FARM
81 acres, with fabulous views. Spring-fed pond and creek. Century 4 bedroom home, bank barn with 29 stalls. \$495,000. Call Cathy Buckrell*. 06472

AFFORDABLE INVESTMENT!
Located on Hillsburgh's busy main street. The ground floor is a newly renovated store, currently leased, and upstairs is a 2 bedroom apartment. This is an investment you can afford, at only \$138,000. Contact Rick Curry*. 06408

IT'S SPRING...ALMOST!
If your dream is to build your own home on a nearly 2 acre estate lot backing onto mixed bush and the Credit River, then call about this one. We can help you choose a builder too. Ed Bessey* or Diana Arnold*. 06472

DON'T WANT A CONDO?
How about this very spacious mobile home on a nicely treed 50' x 100' lot. You'll be pleasantly surprised at the size of the rooms and the amount of closet space. Approximately 936 sq. ft., 3 bedrooms, eat-in kitchen, separate dining or family room, big living room with woodstove. \$89,000. More details form Marg Parker*. 06372

\$329,900.
Lovely Cape Cod on a well treed "Pine Ridge Estates" lot. New full length rear deck. Studio over garage. Oak floors and fireplace in living room. Large open concept kitchen with ceramic tiles and fireplace insert. Call Maida Lundy*. 06398