

# THE PARK PLAN

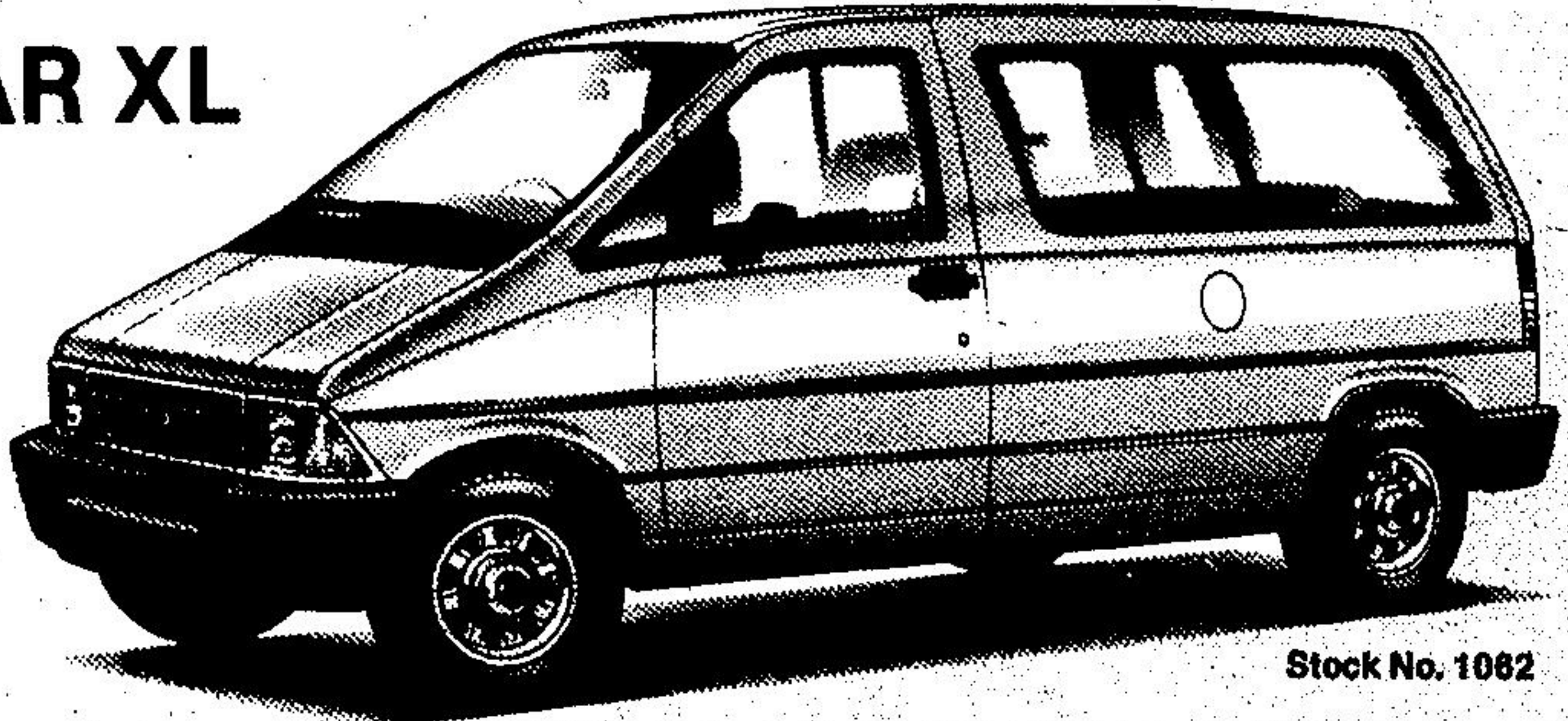
## SET Yourself FREE!

AND HAVE MORE CONTROL OVER YOUR DRIVING COSTS THAN YOU'VE EVER HAD BEFORE.

**GST EXEMPT**

### 1991 AEROSTAR XL

- 7 Passenger
- Dual Captain's Chairs (Cloth)
- Privacy Glass
- AM/FM Stereo Cassette
- Rear Defroster/Washer/Wiper
- Speed Control/Tilt Steering Wheel
- Air Conditioning
- 3.0 L. Engine
- Automatic O/D Transmission



Stock No. 1082

Using **PARK PLAN** Pay Only

# \$10,890.\*

### HAPPINESS IS DRIVING A NEW AEROSTAR EVERY TWO YEARS!

Everyone loves a new vehicle! But how long is a new vehicle new? As time passes, many factors can affect your changing needs...job, family, desires, technology, etc. Don't lock yourself into a vehicle today for five or six years that may not fit your needs or lifestyle long before then.

## IF YOU DIDN'T GET THE PARK PRICE YOU PROBABLY PAID TOO MUCH!!

\* **PARK PLAN** is based on 24 Payments of \$458.00 per month, plus freight (\$605.00), taxes, mileage of 25,000 Km. per annum. Security deposit required. Choice of 3 great options after 24 months.

# PARK LINCOLN-MERCURY

## 877-2261

*Located Conveniently in Halton Hills on Hwy. 7 Between Georgetown And Acton*

## 798-7822