



# GEORGES A. JANSEN

TOWN & COUNTRY SALES REPRESENTATIVE

Milton, Georgetown, Campbellville (416)875-2211  
 North Milton, Rockwood, Acton, Guelph (519)853-2640  
 Oakville, Burlington, Toronto (416)842-1920  
 Fax Number (519)853-3242



**Canada Trust/Realtor**

The Canada Trust Company

## Hi Neighbour.



**MILTON-10 ACRE CLASSIC GEORGIAN ESTATE**  
 Boasting 4800 sq. ft. of grande living space, 4 plus bedrooms, inground pool, manicured sprinklered lawns, super property, large road frontage ensures privacy - offered at \*945,000.



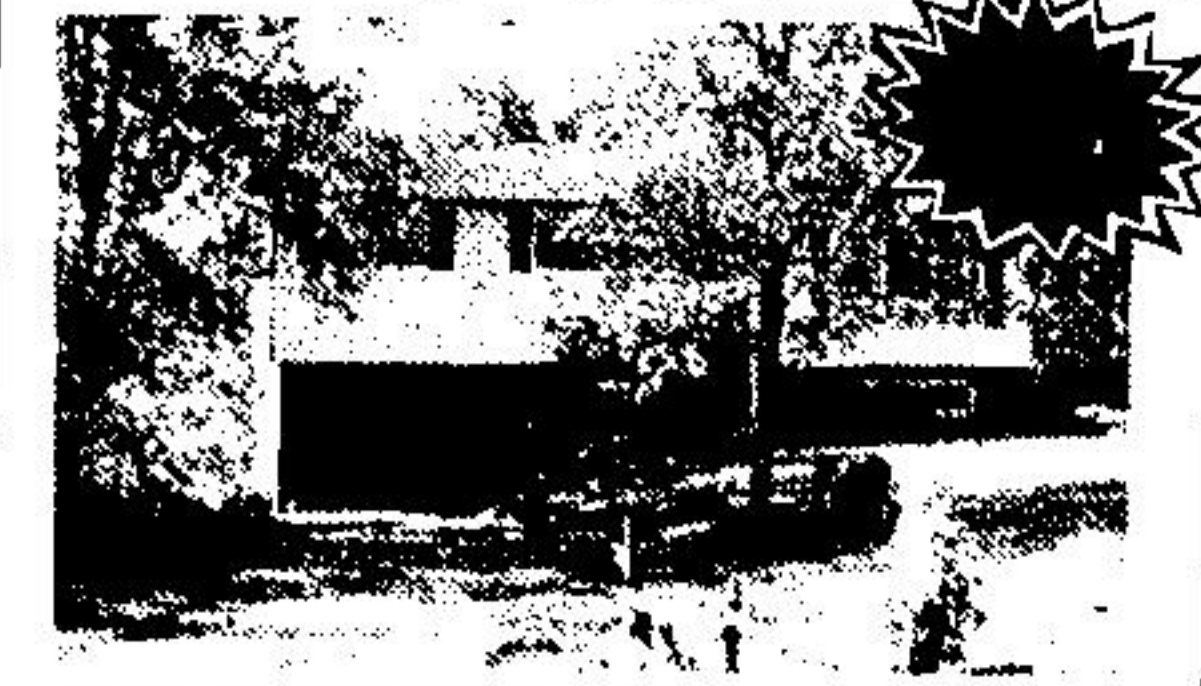
**MILTON - 5 ACRES OF PRIVACY**  
 \*379,000 - One owner, 4 bedrooms, 2200 sq. ft. home, rustic setting.



**HALTON HILLS - 10 ACRE MINI-ESTATE**  
 \*648,000, superb private wooded setting, 4 plus bedrooms, 3200 plus sq. ft., professionally decorated, 3 stall barn, paddock.



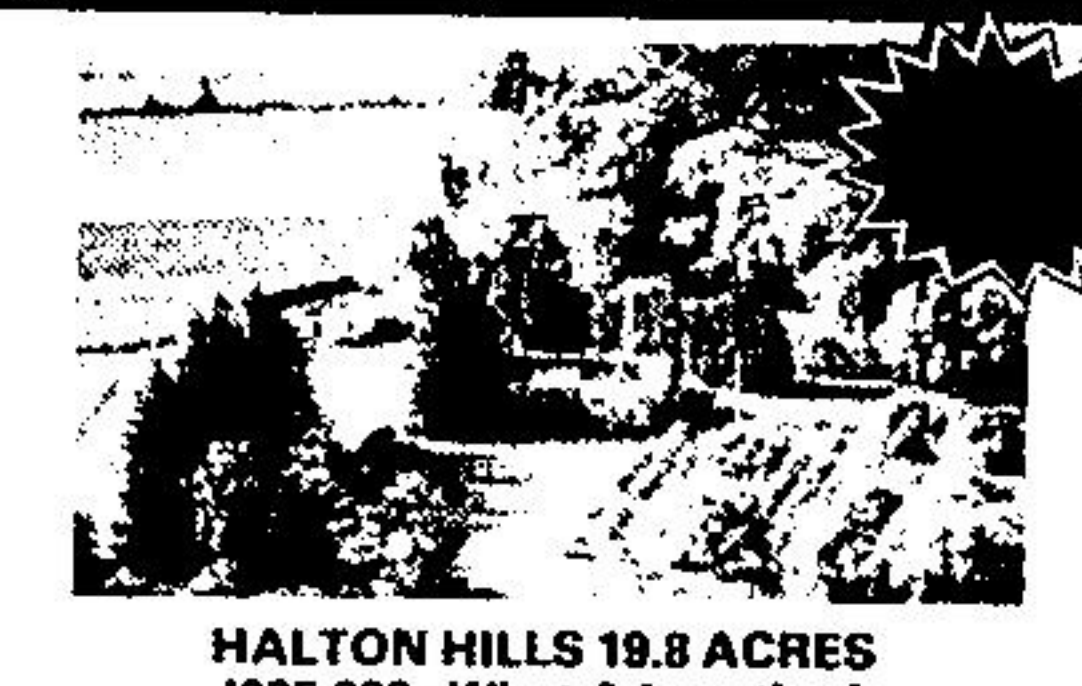
**144 MACDONALD CR., MILTON**  
 \*234,900 - Beautifully decorated 4 bedroom home, 3 bathrooms, full rec room in basement, landscaped, move-in-condition, large deck.



**3045 - 15 SIDEROAD, BROOKVILLE-MILTON**  
 3.3 ACRES  
 Excellent value. 3 bedroom raised bungalow, backing onto future development, pond, good road frontage. Listed at \*288,000.



**11204 - 5TH LINE (NASSA) MILTON**  
 16.3 ACRES  
 Great value, 3 bedroom side-split, family room w/fireplace, inground 32' pool, pond, new bathrooms, new broadroom, new paint, double garage, tennis court, move-in-condition.



**HALTON HILLS 19.8 ACRES**  
 \*925,000 - What A Location!  
 1/2 km north of Steeles  
 1 mile to the 401 James Snow exit.  
 Century farmhouse, 2700 sq. ft. 4 bedrooms, green-solar-house with 50' inground pool, large road frontage, stream, very pretty, interesting property.



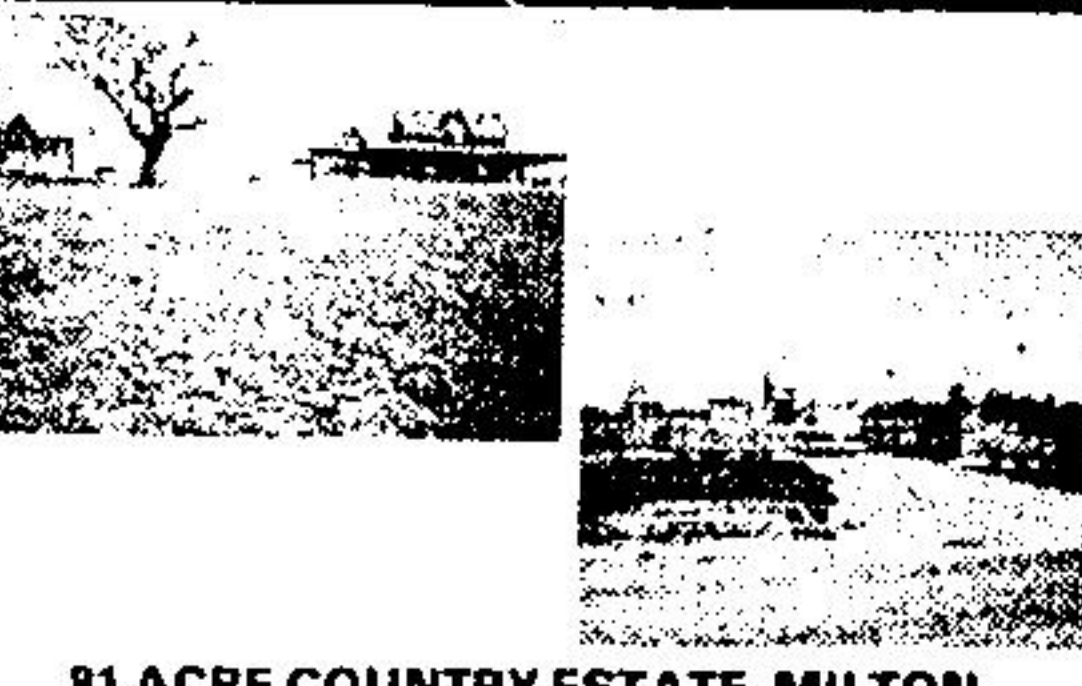
**HALTON HILLS - 76 ACRES**  
 Offered at \*1,150,000 - Super  
 Century brick home, lovingly restored, 4 plus bedrooms, barn, overlooks rolling land - 5 min. to the 401 or Georgetown.



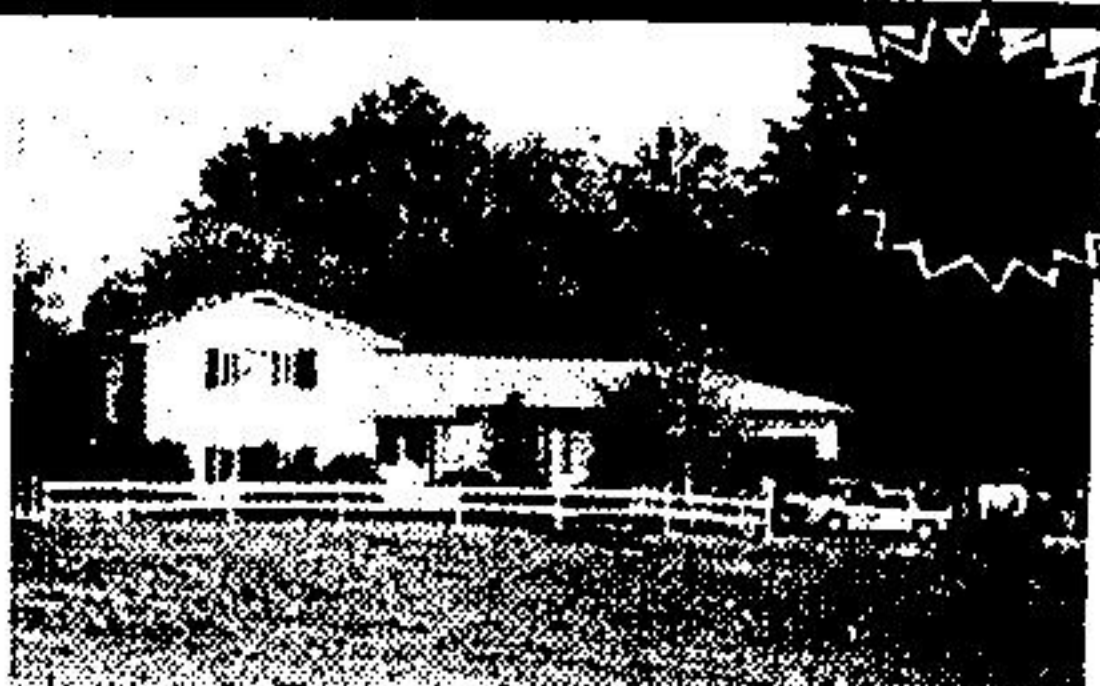
**MILTON/HALTON HILLS TOWN LINE**  
 83 CORNER ACRES  
 8% VENDOR FINANCING FOR 5 YEARS  
 Over 3000' road frontage, 4 bedroom, 2200 sq. ft. home, large barn, listed at \*845,000.



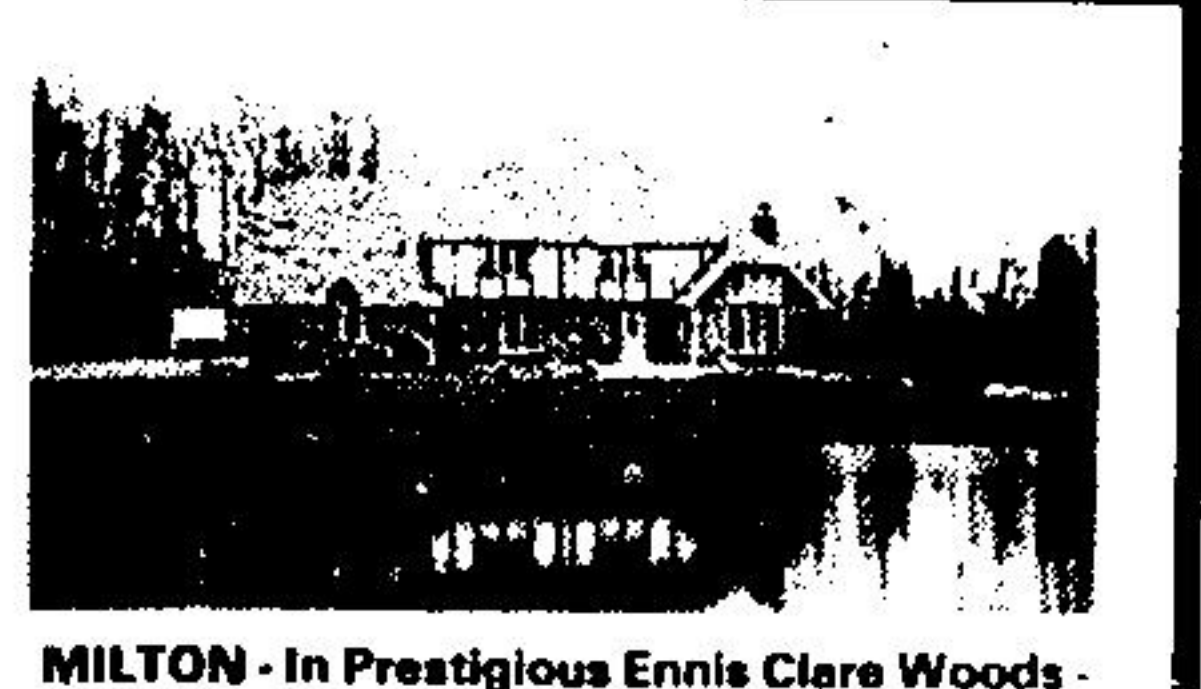
**8430 MacARTHUR CRT. - CAMPBELLVILLE**  
 5 private wooded acres, \*544,000 - 4000 sq. ft., 4 extra large bedrooms, huge European style kitchen w/skylights, garage - Excellent Value.



**81 ACRE COUNTRY ESTATE, MILTON**  
 "WUTHERING HEIGHTS"  
 Offered at \*1,975,000 this hilltop home boasts in excess of 5000 sq. ft. of Victorian styled living space, majestic driveway and entrance. Part Century original home, part recent duplication, large 3 car garage w/loft for future construction. 5 minutes to the 401 and Mohawk Raceway.



**MILTON HWY 7 - 23 ACRES**  
 \*495,000 - Beautiful property, home sits 600' back from the hwy. for privacy, 3 bedrooms, rolling land. Great future investment.



**MILTON - In Prestigious Ennis Clare Woods -**  
 4.4 ACRES  
 \*838,000 - Fantastic English style, 2 1/2 storeys, 5600 sq. ft. of finished living space above grade. Great family home. 6 bedrooms, large decks, set amongst private estate area plus a 90 acre common area for use for the 29 member assoc.



**MILTON 10 ACRES -**  
 \*845,000 beautiful 6 column Georgian, 6 bedrooms, 400 sq. ft., full Grandma suite, fully finished basement, pool, central air - up to date renovations and landscaping. Wow!

**Vendor Financing**  
**9%**  
**For Up to 5 Years**

**MILTON - CAMPBELLVILLE**  
 103 ACRES  
 8229 - 2ND LINE  
 Plus a good 3 bedroom home about 20 acres clear - Listed at \*810,000.



**MILTON - ON 11 ACRES**  
 \*639,000 - Beautiful 3600 sq. ft. Tudor style, mint finishing, 4 bedrooms, skylights. WHAT A KITCHEN - 2 fireplaces.

- MILTON - 51 corner acres - \*595,000
- MILTON - Steeles Ave., 42 Acres - \*550,000
- MILTON/PUSLINCH TOWNLINE - 10 Acres Bldg. Lot - Well & Spring \*248,000
- MILTON/ACTON 8.3 Acre Bldg. Lot on Hwy 7 - \*329,000
- MILTON GUELPH LINE - Dutch Clean and Style Home - 3 b/rms - Barn - 9 Acres - \*425,000

- MILTON/MOFFAT 120 acres with 2 imm. severances possible \*1,600,000
- ROCKWOOD COMMERCIAL - 5200 sq. ft. Bldg. - Let the rent pay for it - \*585,000
- BRAMALEA - Near Hwy 7 & Dixie - New Bldg With All The Toys - Super 2 Bedroom Condo - 1100 sq. ft. - 16th Floor - Great View \*151,800

For a **FREE**, no obligation market opinion, please call Georges A. Jansen, your neighbour and Town & Country Sales Representative for Canada Trust/Realtor

*Indicates either a vendor take back mortgage, or vendor assisted buy down on new mortgage for different time periods. Please contact agent for complete details.*