

VICTOR'S  
GLASS  
ENCLOSURES

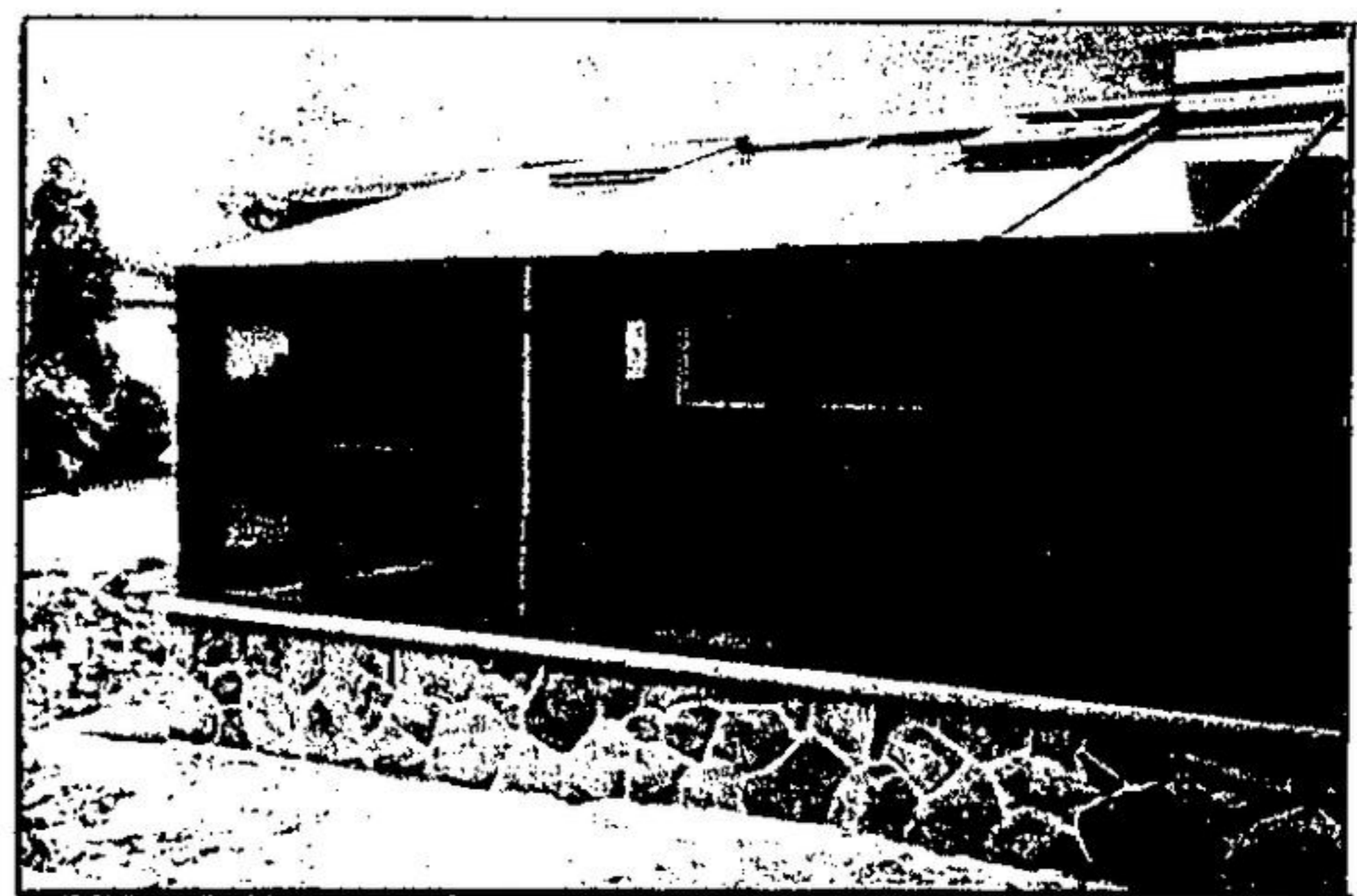
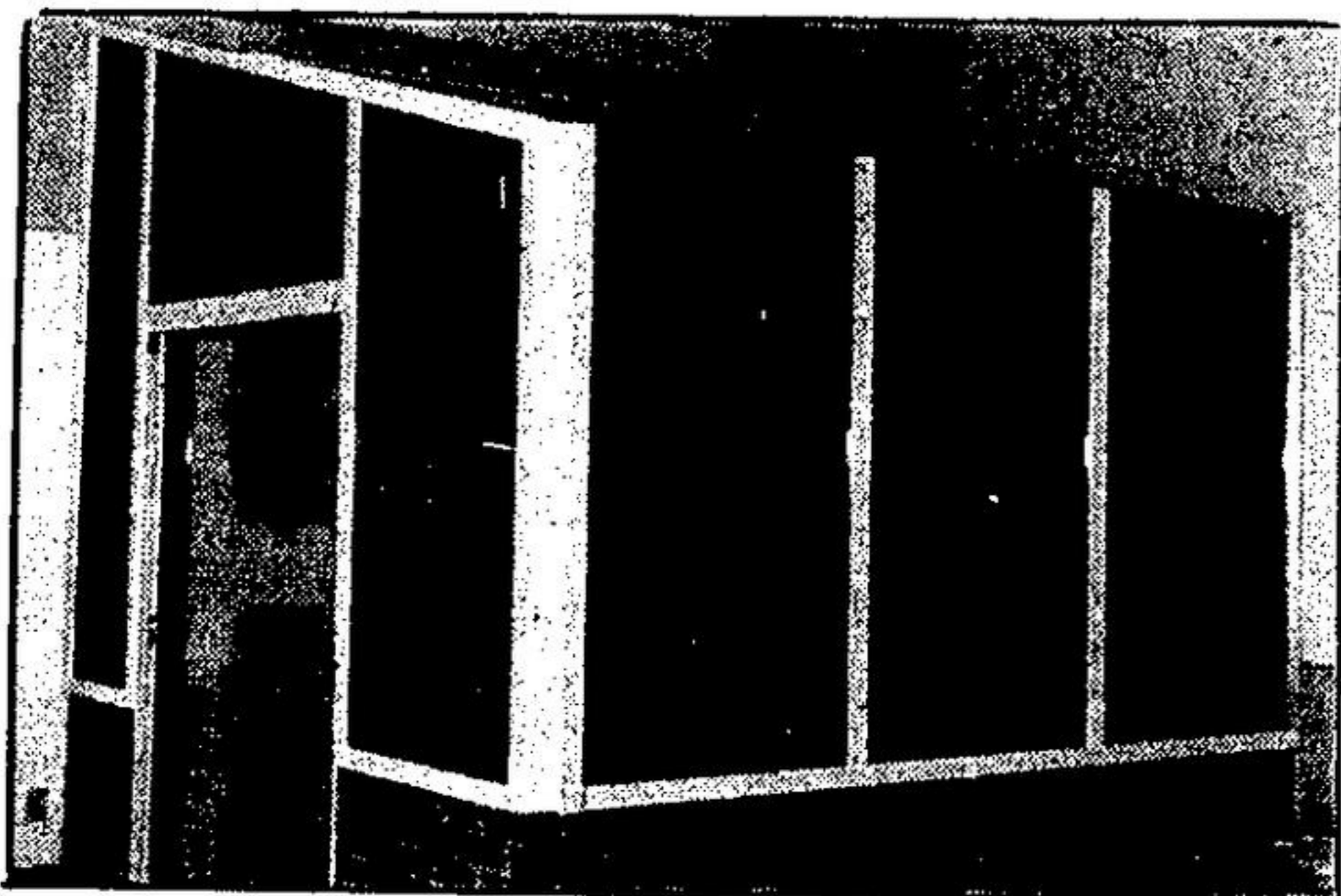
**BEAT THE  
SPRING RUSH!!**

**Call Now!! FREE ESTIMATES**

**AT OUR NEW LOCATION  
150 ARMSTRONG AVE., UNIT 4  
SOLARIUMS — SUN PORCHES  
in Cedar and Aluminum**

- ★ POOL ENCLOSURES
- ★ ENTRANCES, etc.
- ★ SUN DECKS

**Sell & Install — Aluminum Windows and Doors**



**GLASS ENCLOSURES**

**BUILT WITH FIR LAMINATED BEAMS FOR  
AN IMPROVED LOOK AND WARMTH!**

**VICTOR'S  
GLASS ENCLOSURES**

**150 ARMSTRONG AVE.  
UNIT 4  
GEORGETOWN, ONTARIO**

**(Over 25 Years Experience)**

**873-1258**