

# THE WEEK

## THE WORLD ALMANAC DATE BOOK

April 12, 1989

Today is the 102nd day of 1989 and the 23rd day of spring.

S	M	T	W	T	F	S

compass to tell us where we are headed.

If the boss is a woman and someone always agrees with her, what you have as a co-worker is a yes, ma'am.

## OUR LANGUAGE

by Jeffrey McQuain

In the atom, an electron is a negatively charged particle. Check your spelling of electron: split it after the t to find Reagan's campaign slogan.

Something wretched appears miserable or inferior. Wretched, like rugged, has two syllables; otherwise, its pronunciation is wretched.

**Q.** Do you say "Economics is," or is "Economics are" correct?

**A.** Although plural in form, economics usually takes a singular verb, as in "Economics is a complicated subject." In the looser sense of "financial matters," the noun takes a plural verb: "The economics of your proposal are complicated." (Some people always use the shorter is; though, as a matter of economics.)

Do you have a question or comment about our language? Please write to Jeffrey McQuain, in care of this paper

**TODAY'S HISTORY:** On this day in 1961, Yuri Gagarin of the Soviet Union became the first man in space when he made a 108-minute voyage around the earth.

**TODAY'S BIRTHDAYS:** Henry Clay (1777), Tiny Tim (1922), Herbie Hancock (1940), David Letterman (1947), David Cassidy (1950).

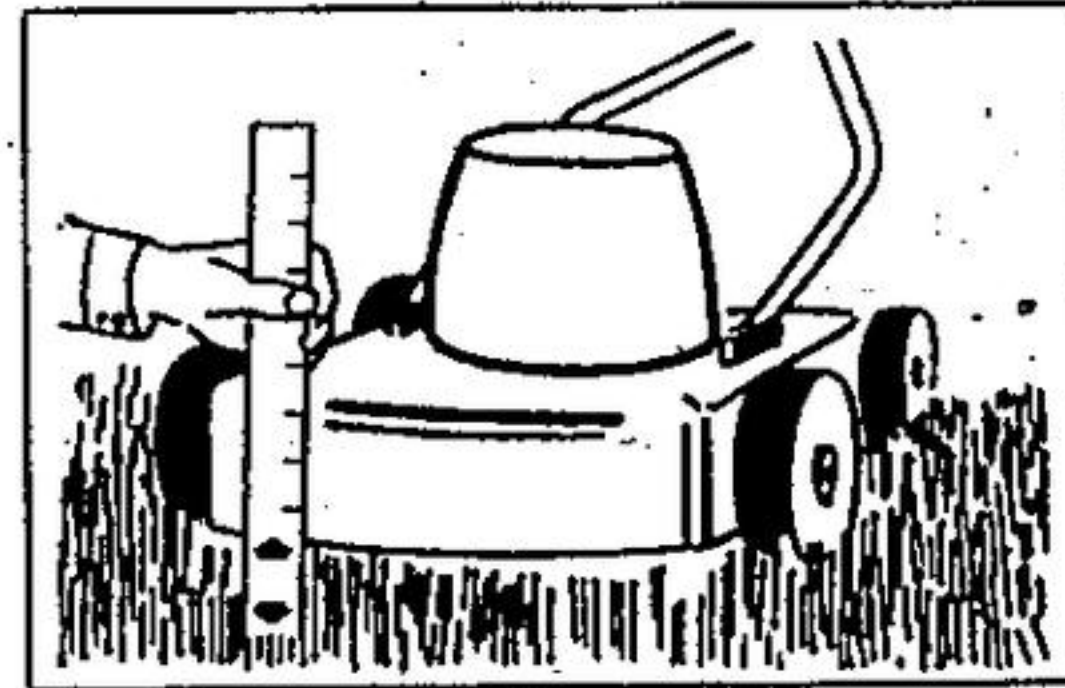
**TODAY'S QUOTE:** "Fall is by favorite season in Los Angeles, watching the birds change colors and fall from the trees." — David Letterman

**TODAY'S MOON:** First quarter.



**TODAY'S BARBS BY PHIL PASTORET**  
Of course we know where we're coming from, but we'd appreciate the loan of

## Professional Advice from the Professionals . . .



Your lawn should be kept 2" to 2½" (5-6 cm) long.

This means that your lawn may require mowing twice weekly in spring and in fall. Mowing may only be necessary once every two weeks during the hot summer. Since the root system of a grass plant grows proportionately to the above ground parts of the plant, a longer cutting height results in a stronger, deeper root system.

Calculate your mower blade height by measuring the distance between the ground and the base of your lawn mower.

Lawn mower blades should be kept razor sharp.

A sharp blade makes a clean, precise cut of each grass blade. This crisp cut allows the blade to heal quickly and the lawn looks very tidy. A dull blade chews and frays grass blades. This messy chopping results in straggly, rough tips which give the lawn an ugly, gray appearance and exposes wounded tissue to disease attack.

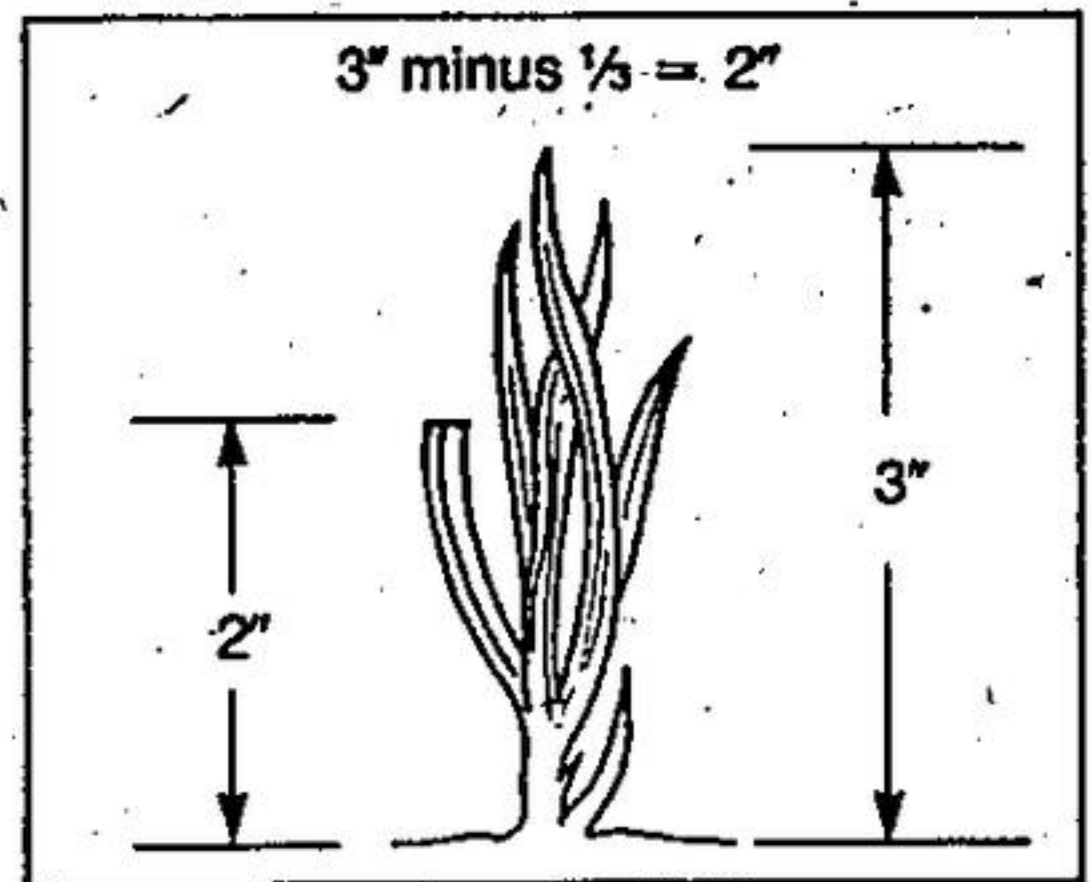
To maintain a razor-sharp blade, it may be necessary to have the blade sharpened 3 times yearly. Remember to sharpen the blade, or even a new lawn mower, as a safety precaution. Few new lawn mowers are sold with a pre-sharpened blade. A sharp blade results in a longer life and less wear and tear on your lawn mower engine.

No more than 1/3 of a grass plant should be removed with each mowing.

It is only necessary to remove lawn clippings if they are long and will smother the lawn.

Lawn mowings are most tidy when done when grass blades are dry.

The mowing direction should be altered upon each mowing. This procedure will keep the grass growing strong and straight while reducing weed grass infestation.



When a lawn grows to 3 inches, it should be mowed down only to 2 inches. If the lawn gets ahead of you and grows to 6 inches, reduce mowing height by 1/3 to 4 inches, the next mowing 3 inches and finally 2 inches.

THESE GARDENING TIPS ARE BROUGHT TO YOU BY "THE WEEDMAN"

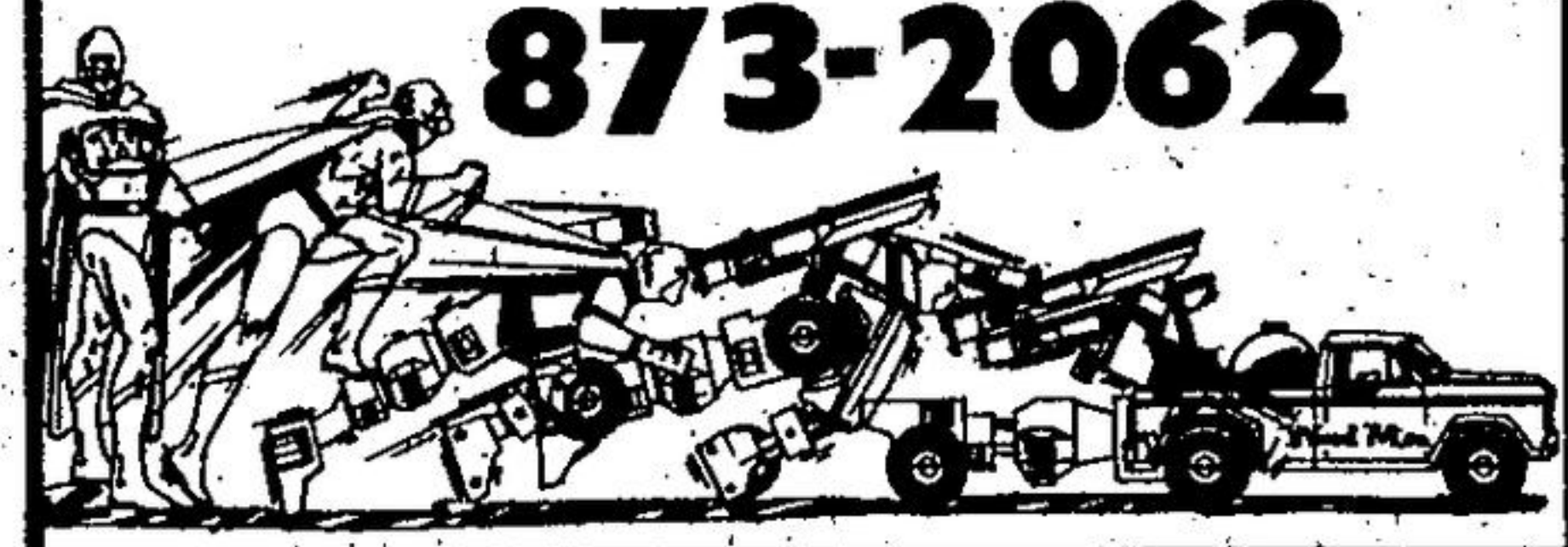
# TRANSFORM YOUR LAWN!

- SEASON LONG FERTILIZATION
- WEED AND INSECT CONTROL
- WRITTEN GUARANTEE
- GOVERNMENT CERTIFIED

**Weed Man®**

WE CARE FOR YOUR LAWN.

**873-2062**



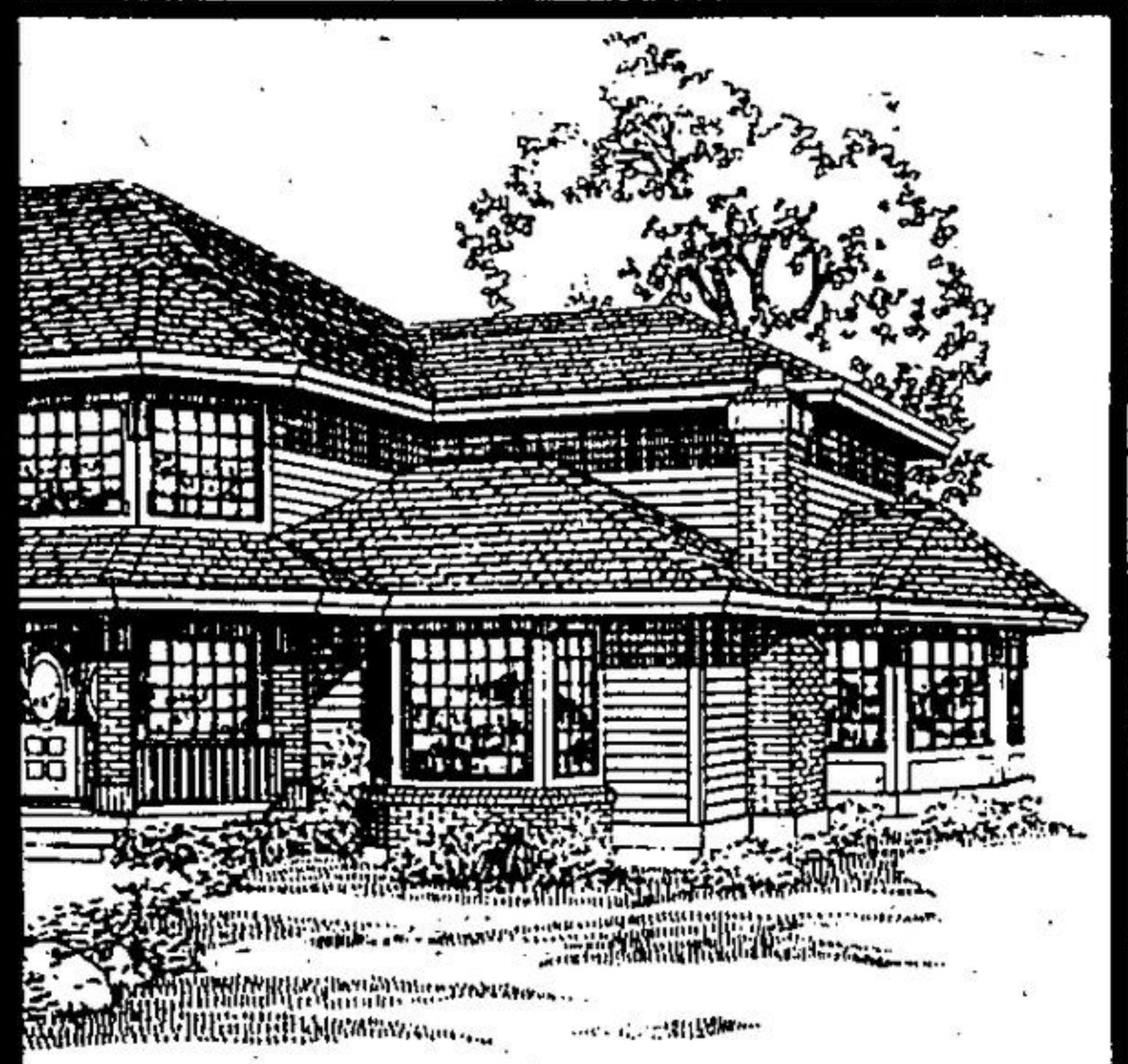
**CHER MINUM**  
BRAND  
SIDING  
• Soffit & Fascia  
• 2" Seamless  
• Earthstrong  
• Storm Doors  
• Storm Windows  
OF COLOURS  
SIMILAR  
-8830

**TIPAR**  
★ FREE ESTIMATES ★  
for  
Custom Built Homes  
Commercial/Industrial Buildings  
Additions/Restorations  
Foundations/Concrete  
Carpentry/Rough & Finish  
Roofing - all types  
Siding/Windows/Doors  
No Job too small!  
Reasonable/Competitive Rates  
**873-0530**

**TWISS FUELS LTD**  
24 HR BURNER SERVICE  
INSTALLATIONS  
AUTOMATIC DELIVERY  
HEATING OIL GASOLINE LUBRICANTS DIESEL  
EQUIALIZED PAYMENT PLAN  
BY THE  
**878-6380**  
32 Steeles Ave E

**BASMENT WATERPROOFING SPECIALISTS**  
LOW PRICES MODERN METHODS  
24 HR SERVICE  
18 YEAR UNCONDITIONAL WARRANTY  
**GORD'S**  
BASMENT WATERPROOFING  
24 HR SERVICE  
FREE ESTIMATES  
**451-0595**

**Les Lafferty Construction LTD.**  
"RENOVATIONS FROM ROOF TO BASEMENT"  
• Drywall Taping  
• Ceramic Tile  
• Carpentry  
AFTER 6 CALL  
**877-4080**



## INGLISH LUXURIOUS HOME

Double doors open to a grand foyer with sweeping curved staircase. The foyer spills to a sunken living room with bay window, planter shelf and fireplace with wood storage bin. Adjoining the living room is an octagonal shaped dining room with wide windows on four sides - perfect for formal entertaining. The kitchen is a gourmet's delight, with centre preparation island, long peninsular counter, walk-in pantry and breakfast bay. The large sunken family room is separated from the hallway and kitchen by a low, open railing. A large laundry room, off the two car garage, has ample space for a sewing station.

The open staircase ascends to a railed gallery which views the foyer below. The master bedroom features a spacious walk-in closet and ensuite with raised whirlpool spa, his and hers vanity and shower. The four additional bedrooms, two with bay windows share a main bathroom with twin vanity and soaking tub.

The finished floor area of this exciting home is 3,254 square feet.

Send for Canada's largest Plan book with over 300 designs, only \$9.95, including shipping. To build Plan No. 1989-3254, order an 8 set blueprint package for \$475.00, or 5 sets for \$425.00, plus \$14.00 shipping. Send payment to HOME OF THE WEEK, c/o The Halton Hills Herald, Unit 6-2624 Dunwin Drive, Mississauga, Ontario L5L 3T5. For fastest service, use Visa/MasterCard and call toll free 1-800-663-8739, 9:00 a.m.-8:00 p.m., Eastern Time, Monday to Saturday. Metro Toronto residents, please call 828-5657, 8:30 a.m.-5:00 p.m.

**MOLLY MAID**  
"SPECIALIZING IN HOUSE CLEANING FOR PARTICULAR PEOPLE"  
• Domestic Light Housekeeping on Regular Basis  
• Bonded, Insured, Uniformed  
• Supplies Provided  
Call Us For A Complete Estimate Of Your Need  
**876-1672 853-4720**

**HOME HARDWARE**  
Home hardware  
FOR ALL YOUR HARDWARE NEEDS  
• Keys Cut  
• Screen & Window Repair  
• Beaut-Tone Paints  
• Electrical & Plumbing Supplies  
• Housewares  
• Small Appliances  
FRIENDLY, COURTEOUS SERVICE  
265 GUELPH STREET  
**877-8277**

**HALTON HILLS ELECTRICAL CONTRACTING LIMITED**  
• INDUSTRIAL  
• COMMERCIAL  
• RESIDENTIAL  
• RURAL  
23½ HOUR SERVICE  
PROP. LYLE PRUETER  
**853-2572**

**DASHWOOD WINDOW AND DOOR CENTRE**  
The Window and Door Centre supplying you with quality products, factory service and installation.  
SEE US TODAY!  
DASHWOOD WINDOW AND DOOR CENTRE  
100 Wilkinson Rd. Brampton  
**(416) 454-5362**

**HENK'S**  
Lawn & Garden Equipment  
SALES & SERVICE OF LAWN, GARDEW AND SMALL INDUSTRIAL EQUIPMENT  
Winter is the time to get your lawn equipment serviced to avoid lineups in spring  
Also, now is the time to start shopping for that new lawnmower, riding mower, tiller, etc.  
28 Stewarttown Rd.  
**877-0788**

**ABC ROOFING**  
NEW CONSTRUCTION AND RE-ROOF  
FREE ESTIMATES  
**(519) 833-2934**

Peel Heating and Air Conditioning  
**LENNOX COMFORT PLUS CASH BACK**  
Lennox and Independent Lennox Dealers are now offering you savings of up to \$425.00 on selected products — air conditioning, heating, heat pumps and accessories.  
For a lifetime of comfort and savings, call your participating Lennox Dealer now and be assured of early installation.  
Don't delay! Take advantage of the Lennox "Comfort Plus Cashback."  
Offer expires May 15, 1989  
**LENNOX**  
All Conditioning Systems

To Place Your Ad CALL **877-2201**

**MAXIVAC**  
Built-in Vacuum Systems  
ASK ABOUT OUR IN-HOME CONSULTATION!  
GEORGETOWN Mon.-Fri. 9:00-9:00  
Saturday 9:00-6:00

**ED. OLDFORD CONSTRUCTION LTD.**  
General Contracting  
• Alterations • Garages  
• Rec Rooms • Repairs  
• Custom Woodwork • Decks  
LICENSED ELECTRICIAN  
Free Estimates **877-1390**

**G.W. WOODWORKING**  
SPECIALIZING IN CUSTOM KITCHENS  
• VANITIES • WALL UNITS • BARS  
FREE ESTIMATES  
348 GUELPH ST. **877-9796**

INSULATED EXTERIOR DOORS QUALITY INSTALLATIONS WITH GUARANTEE  
HANDCRAFTED GLASS OAK . . . CEDAR . . . PINE . . . INTERIOR DOOR SOLID VINYL WINDOWS  
**THE DOOR STOP**  
545 Main Street East  
Milton, Ontario L9T 3J2  
Toronto: 821-3329  
Milton: 876-4631

**COLONIAL TREE SERVICE**  
• TREE SURGEON • FREE PROPERTY ANALYSIS  
Certified by Ontario Hydro  
17 YEARS EXPERIENCE  
TREE TRIMMING & REMOVAL  
• STUMPS REMOVED  
• FULLY INSURED  
BRIAN BUTLER **877-8591**

**PLUMBING SUPPLIES**  
• Acrylic Bath & Shower Units  
• Whirlpools  
• Spas • Pedestals  
• Vanities & Medicine Cabinets  
**877-2293 453-8911**  
**PLUMBING SHOWROOM**  
11 Armstrong Ave., Georgetown

Peel Heating and Air Conditioning  
32 Sully Rd., Brampton **451-7085**  
21 Consumers Ctr. MISSISSAUGA  
Authorised Dealer **546-1728**