

Vito's considers postal contract

By DONNA KELL
Herald Staff

After a month of speculation on how Canada Post planned to service the postal needs of residents in the Limehouse area, an offer has been put forward.

Vito's Fruit Market, situated at the intersection of Highway 7 and Regional Road 43 has been offered the postal service contract, and the owners are now carefully considering the proposal.

Officials from Canada Post arranged a meeting with Vito's when Limehouse General Store cancelled its postal service Dec. 2. But officials did not show for a scheduled meeting with storeowners Chris

and Marion Vito the first week in December, and a postal contract was left up in the air until last week.

Rural post office representative Janessa Hawke arrived unannounced last week at Vito's, situated two kilometres from the former Limehouse facilities, offering the Vitos a contract to receive several hundred dollars a month to provide postal services, said Marion Vito.

"We'll probably put the service in," she said. But the couple added the contract must go under review with their lawyer and an insurance company must be consulted before a final decision is made.

"I want to read the contract. I want to know we won't be bound to doing money orders and other postal services," said Mrs. Vito.

The Vitos recently applied for stamp vendor status from the local postmaster.

A contract with Canada Post would mean increased service - at least the addition of parcel pick-up, said Mrs. Vito.

Canada Post spokesmen would not reveal the terms of the contract, saying "there is no set model" for contracts with storeowners, and that "each contract is individual."

Media Relations spokesman

Continued on Page 3



Grade 2 students at George Kennedy School found it was "better late than never" last week as they were finally able to stage their Christmas concert. Originally, the

Christmas event was to have been held Dec. 15 - the same day Halton Hills was left in darkness due to a widespread power blackout. (Herald photo)

OPEN 10-10, 7 DAYS A WEEK
"Canada's Largest Leather Store"

the olde Hide House
Built in 1892

49 EASTERN AVE., ACTON (519) 853-1031
It's Worth the Drive to Acton!

LOOK
What's Happening To Us!
See Next Week's Herald For Details

Mister Donut



FREE DISTRIBUTION

WEDNESDAY, JANUARY 11, 1989

28 PAGES

Traffic turmoil

By BRIAN MacLEOD
Herald Staff

POWER members are not pleased with a new transportation study which would bring trucks destined for the proposed Acton landfill from the north, straight through downtown Acton.

The study, prepared by Marshall Macklin Monaghan Ltd. for dump proponents Reclamation Systems Inc., reroutes all proposed truck traffic to come north or south on Highway 25, then east on Regional Road 43 to the landfill site at the Acton Quarry on the Third Line.

"It is very naive or very stupid on their part to think that they can route trucks through the main street of Acton without causing more problems than are already there," said Ruth French, co-chairman of the citizens group POWER (Protect Our Water and Environmental Resources).

RSI was told to re-do the transportation study last year during the public information meetings. The study group, organized for RSI by Eco Logic Laboratories, said the proposed transportation routes were unacceptable because they brought more truck traffic onto roads which are already heavily travelled by trucks.

The group also instructed RSI to study the implications of bringing waste in from Metropolitan Toronto. That component of the study had been missed, although the proponents have admitted Toronto could be a client for the proposed 20 million-tonne landfill site, study group members said.

The original study proposed trucks travel along Highway 25, then east on Regional Road 43 to the landfill site, or north on Trafalgar Road then west on Sideroad 17, north on the Fourth Line and west on Regional Road 43. The new study eliminates the Fourth Line and Sideroad 17 from

the truck haul routes to and from the landfill site.

RSI expects about 436 trucks per day to enter the site between 8 a.m. and 5 p.m. Monday to Friday when the site is opened.

The company has two transportation proposals. The first would allow waste from surrounding municipalities including the City of Guelph and the Region of Peel and Halton Region on the proposed routes.

Under the second proposal, RSI would only accept waste from Metropolitan Toronto and the town of Halton Hills. Waste from Toronto would be brought in on much larger trucks, thereby reducing numbers to about 241 trucks a day, RSI says.

Advantages to the new proposed routes are that "Highway 25 is a King's highway and it is expressly designed to carry the proposed volume and type of truck traffic," RSI says. "As well, the main truck route does not pass through any urban areas."

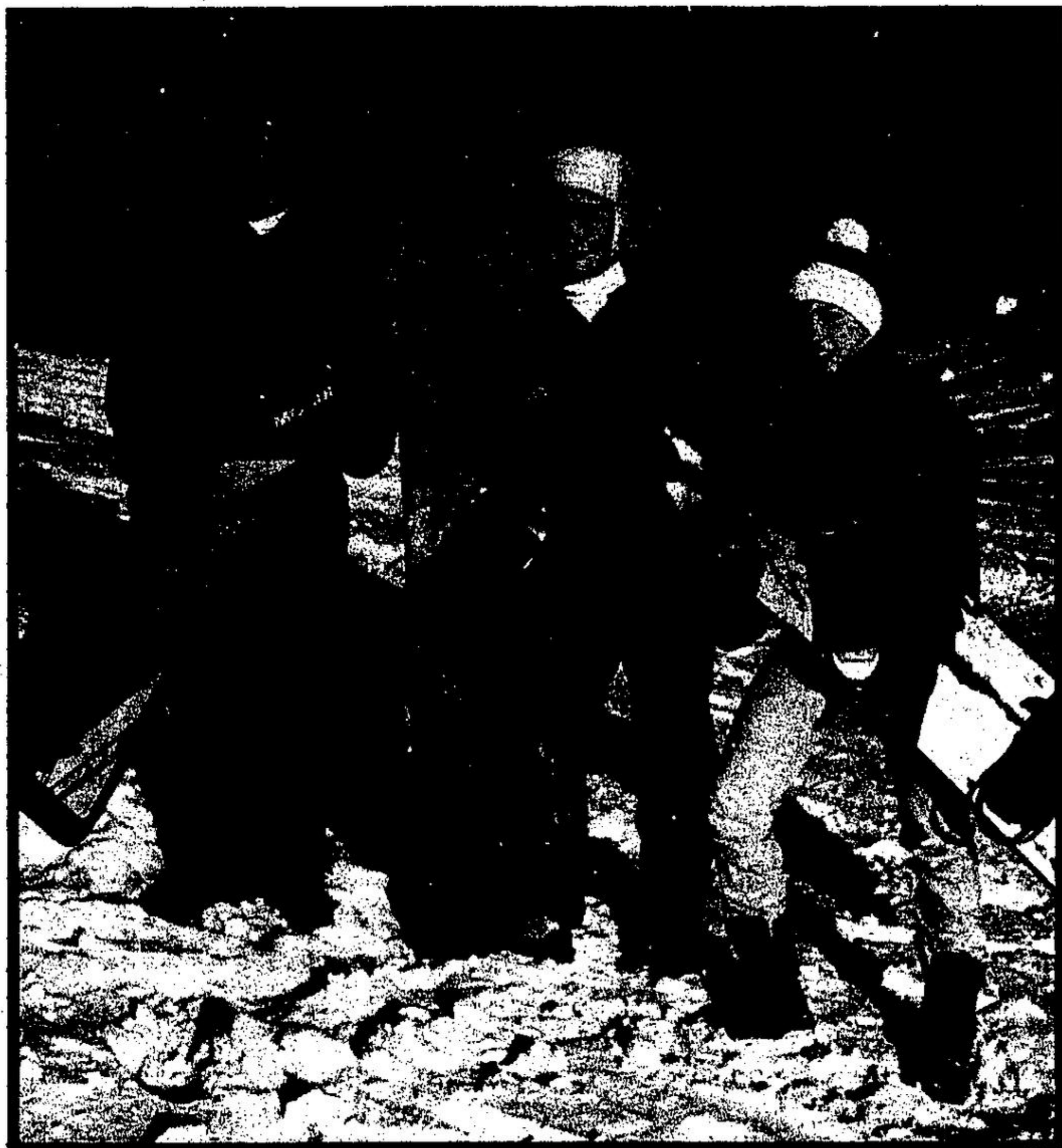
"Truck traffic generated by the landfill will not endanger the safety of the community," RSI says.

The landfill issue has been in hiatus since the study group walked out on the public information meetings in September at a meeting in Milton, unhappy with the format. While the POWER group is continuing its fundraising activities (the group has raised more than \$10,000 to date), RSI is preparing draft documents to submit to the Ministry of Environment for review.

Once those documents are finalized, Eco Logic will attempt to continue the public information process - probably in a different form.

A consolidated hearings board will then listen to arguments for and against the dump.

A final decision is not expected on the landfill site proposal before 1990.



Not Cold Enough . . .

The coldest day of the year so far didn't stop these youngsters from hitting the slopes Wednesday afternoon. Temperatures dipped down to 23 Celsius, but felt a lot colder with the wind chill factor. Gliding

down the slopes of North Halton Golf Course were Simon Johnston, Jeff Williams and Matt Anderson, all 12, of Stewarttown Public School. (Herald photo by Donna Kell)

