

## Norval news

### Norval WI members meet

**NORVAL**—The Christmas meeting of Norval Women's Institute was held at the home of Jean May, Dec. 1 at 8 p.m.

President Norine Van Leeuwen welcomed 13 members and five guests and opened the meeting by reading a poem entitled "A True Friend."

The WI is giving \$100 to the Georgetown Lions Club for Christmas baskets again this year and gifts of flowers and cookies are going to the shut-in members.

President Norine reported lots of interest in recycling at the Federated Women's Institute of Ontario booth at the Royal Winter Fair.

Six members from Norval attended Newfoundland night in Limehouse Hall Nov. 29, hosted by five District ladies who had attended the national conference this year. Each lady gave a report on a different phase of the convention and Joan Playle, alternate district director, showed slides of Newfoundland. It was a very enjoyable evening complete with salmon for lunch.

Federated Women's Institute of Canada is promoting the sale of an excellent "National cook book."

The collection from the meeting will be donated to the Erland Lee Museum Home in memory of the late May Cleave.

The roll call "a decorating idea either new or traditional in your home" brought forth many interesting crafts and comments.

The WI had a special video taken of the meeting by a guest.

Kay Wilson, the WI public relations officer, was in charge of the musical program. Readings of the eternal Christmas story by members and guests were interspersed by solos of Christmas music rendered by the lovely voice of Glenn Laidlaw accompanied at the organ by June Fries. A carol sing-song followed and Santa came with gifts for all. A social hour followed with a delicious lunch of goodies served by Jean May.

The next meeting is at the home of Kay Wilson on Jan. 5 with a speaker from Halton Farm Safety. Everyone is welcome.

### Halton's top farmer

**NORVAL**—Congratulations to Bruce and Aileen Nixon of RRI, Norval on Bruce being chosen Halton's Farmer of the Year. The evening was held at the Acton Legion on Nov. 25 where 225 people attended the dinner. Bruce was nominated by the Halton Milk Committee and the Halton and Peel Jersey Club. Frank Anthony of Limehouse, a cash crop farmer, was nominated by the Federation of Agriculture.

Phyllis McMaster, Halton's Agricultural Representative, made the announcement and Norm Biggar, President of the Federation of Agriculture made the presentation of a plaque to Bruce. Linda Cullingham, second vice-president of Halton Federation of Agriculture presented roses to Aileen.

Peter Pomeroy, chairman of Halton Region and Marilyn Serjeantson, representing Mayor Russ Miller et al. presented a plaque.

The award is presented annually and is sponsored by the family of the late Ross Segaworth to recognize agricultural achievements.

### Euchre night

**NORVAL**—Pinegrove community euchre had five tables last Monday. Winners were Marion Hunter, May Tost, Marie Murray, Sid Felkema. Lucky draw winner was Vera Thatcher. Committee - Webbs Flowers and Marie Murray.

### Special service

**NORVAL**—The White Gift Service was held last Sunday in Norval United Church. Much credit is due the Sunday School teachers who conducted the service and guided their classes through musical numbers, as well as skits representing the wise men, shepherds, angels and Joseph, Mary and the baby Jesus.

### Celebrating 50th anniversary

**NORVAL**—Congratulations to Norman and Vera Wilson of Thornhill on their 50th wedding anniversary. Their two daughters and husbands, Joy and Brian Taylor of Toronto and Gloria and Jim Hunt of Richmond Hill, entertained for their parents on Nov. 26. Their four grandsons, Jamie Helm and his wife Terry, Brian and Greg Helm and Darryl Taylor attended. Also from Milton was Mrs. Rena Cox and Stan and Olive Joe of Acton, Elmer and Debbie Joe of Cambridge and Hardy and Ruby Barnhill of Brampton, Jim and Marlon (Humphrey) Montgomery of

Brampton, John and Ria Wilson of Norwood, Jean Wilson and Dean Hancock of Georgetown and Spencer and Kay Wilson of Norval.

### Top winners

**NORVAL**—Norval community euchre had six tables on Thursday. Winners were: Marjorie Harrison, Isabel Landry, Phil Landry, Elizabeth McMenemy, Lone Hands - George Burt, Lucky Draw - Eva Presswood. The committee was comprised of Pearl Burt, Kay McMillan and Marg Davidson.

# Bruce Nixon named top farmer

By DONNA KELL  
Herald Staff

Norval farmer Bruce Nixon was named Outstanding Farmer of the Year for Halton at a recent ceremony held at the Acton Legion.

Mr. Nixon has been dairy farming since 1951, receiving his first dairy cattle from his father, who also farmed.

The Nixon farm spans over 200 acres near the Sidroad 10 and Ninth Line intersection. The Jersey herd is tended by Bruce, his wife Aileen and their son John.

"This is a family farm. I don't really deserve all the credit for this," said Mr. Nixon.

But, he added, "it's quite an honor to be singled out by your fellow farmers." (He was nominated by the Halton Milk Committee and the Halton-Peel Jersey Club). He claims "there are other farmers in the Region deserving of an award."

Like other farmers in Halton Region, Mr. Nixon's farm suffered somewhat through this year's drought. Spring rains were down 50 per cent and the pasture for feeding cattle, "didn't come back the way it should have," after the farm received some rainfall.

But corn was a success. "Corn was really good, better than average," he said. "We had enough moisture in the spring of the year and enough at the end of the year to keep things going."

Mr. Nixon's dairy farm is renowned for a substantial butter fat con-

tent from the cow's milk. And although it was a tough battle to keep the fat over five per cent this year with the lower quality hay fed to cattle, Mr. Nixon dealt with the situation.

"We had to feed a lot of hay this summer, more than usual because of the drought."

The Nixon Jersey legacy at Roselea Jersey farms in Norval could be passed on to one or several of the family's 13 grandchildren, but it will be their choice, said Mr. Nixon. "We allow them to make up their own minds."

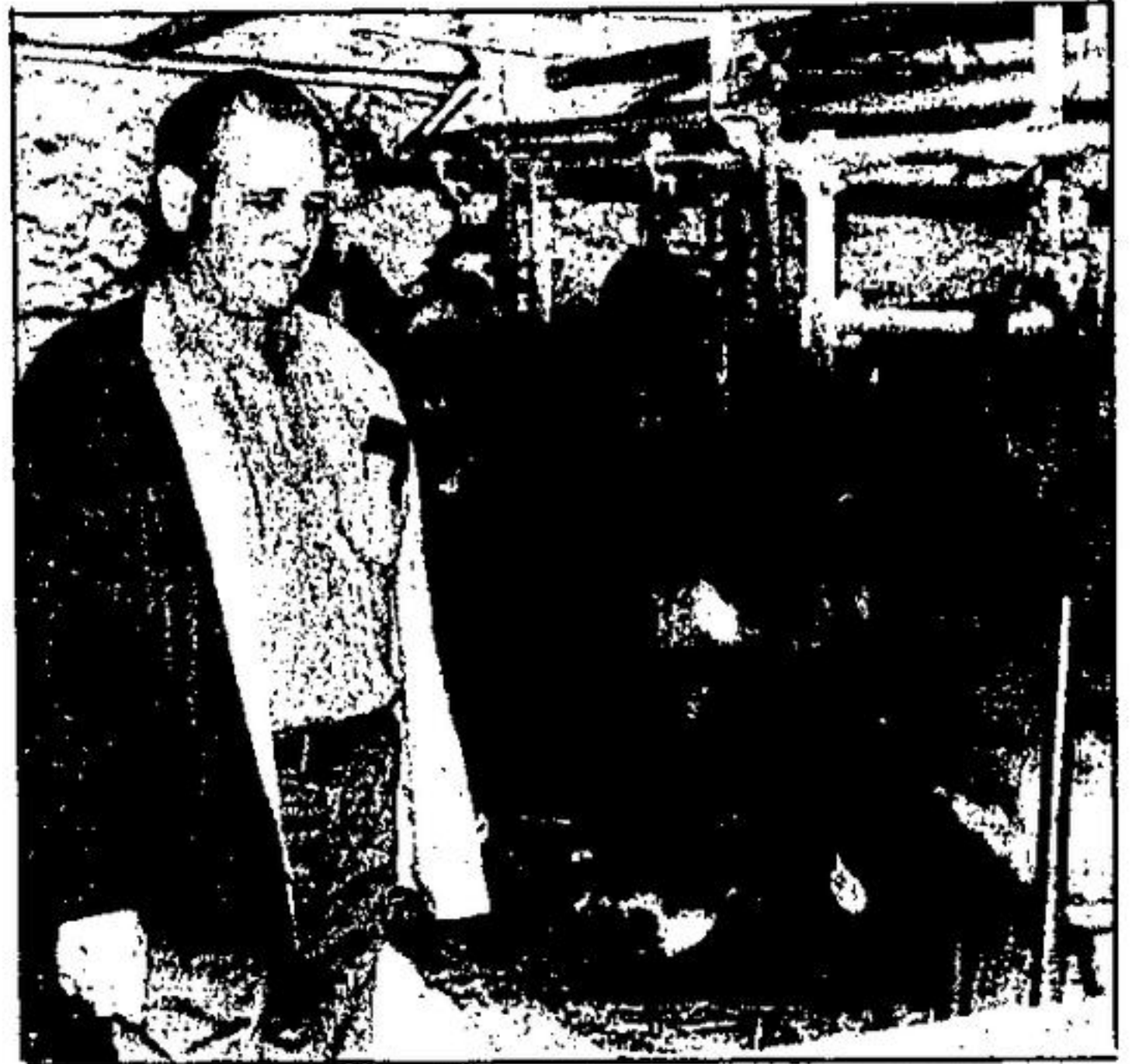
That is, of course, assuming that Bruce Nixon ever retires. "I'll probably never retire. I'll always be doing something," he said.

Bruce and his wife, Aileen, fear that they are being "pushed back" by urban growth in Georgetown and nearby areas. "Speculators are pushing us back... the urban area is getting closer and closer," said Mr. Nixon.

But he won't be stopped by possible land rezoning. "We're going to keep working and farming. (If) we get shoved out of here... we'll just locate somewhere else," said Mr. Nixon, whose first farm was located in present-day Streetsville.

And the quality of his 125 cattle, 50 of which are for milking, will get better.

"We'll still keep working, trying to improve our herd," said Halton's Outstanding Farmer of the Year.



Bruce Nixon, Halton's Outstanding Farmer of the Year, poses with his prize-winning Jersey selection, General's Xenia. In 1985 this cow was the Ontario Class Leader in the Senior 3-year-old class. She produced 7,201 kg milk and 356 kg fat. (Herald photo)

## Farmers salvage fair yields

"This year's crop yields have been 'better than expected,' but are still down from 1987 because of the past summer's drought.

According to Phyllis MacMaster from the local Ministry of Agriculture office, 1987 was 'excellent,' causing this year's yields to dull in comparison.

However, Mrs. MacMaster added that some areas in Halton Region received more rainfall than others.

President of the Ontario Corn Producers' Federation and Limehouse cash crop farmer Frank Anthony said that mid-Halton was hardest hit by the drought.

"That area from Georgetown to the 401 was dry," said Mr. Anthony. He pointed to the 15 inches of rainfall the Brownbridge farm in Ashgrove, received in July, as compared to the eight inches that fell in Limehouse.

Murray Brownbridge, whose dairy and cash crop farm is south of Ashgrove, says this season produced only two hay cuttings (there are usually three), forcing him to purchase more hay for his cattle.

And corn was also down for the Brownbridges. While the Ashgrove farm usually produces enough corn for both silage and grain corn, the 75-per-cent yield forced the farmer to buy more grain corn to feed livestock.

"Our grain yields were reduced by about one-third. Our grain corn was 75 per cent of normal (yields) and our corn silage was 50 per cent of normal. And that's just because the stocks were so short."

"We're going to have to purchase our grain and all of our grain corn until next year's crop," said Mr. Brownbridge.

But things are not so tough at the 2,000-acre Anthony farm in Limehouse. Mr. Anthony managed to export some hay to the United States, albeit less hay than usual, and although the hay drop "was down by 50 per cent," there were three cuttings, with the third cutting classified as "light."

Spring rains were ruined this year because their growing season coincided with the spring-summer drought. But corn was healthier.

"The rain (in July) really got things moving," said Mr. Anthony. "Corn and soybean did well in the last half of the season."

While the first 90 days of the growing season were not so good, he said, the last half ushered in "an amazing turnout" of crops.

And what about next year?

"Well, we can only look ahead in the forecasts," said Mr. Anthony, who added that weather conditions change from "day to day."

## Be a legion early bird

By J.T. HAYES  
Branch 120 PRO

Membership Chairman Pat Chamberlain asks me to remind you all about the earlybird draw. This is held for those who pay 1989 dues before Dec. 31, 1988.

A total of 10 lucky members will have their dues returned to them, just for paying on time. Those who were really earlybirds should be checking with the stewards for their new cards. A large number are already back from command.

Still with membership, have you moved lately? Why not let Pat know? Santa's little helpers, Gord King wishes to remind us all that the Children's Christmas Party is this Thursday, Dec. 8. Have you returned your Christmas draw tickets yet? The Clown Band from Brampton will be out to show the children a good time, and they do a good job with the parents as well.

The Saturday afternoon turkey dart shoot was well supported and the following will be assured of a bird this Christmas: Bob Reynolds, Norm Ward, Jim McDowell, May Swanson, Bill Collier, Bryan Gray, Marry Allen also ran a roast draw, to round out the afternoon and the winner was Jim McKee.

(CAR CLUB: The draw held Dec. 1 produced the following \$25 winners: 368 Gary Alton; 279 Al McFadyen; 398 Jim McGill; 283 Janet Beneteau; 487 Jim Jones; and 323 Joanie Zona.

The half-time draw will be held on Dec. 15. Read the rules on your ticket.

**FRIDAY NIGHT EUCHRE:** 1st lady, Myra Peasey; 2nd Lily Maybanks; and most lone hands, Myrtle Zillo. Gents 1st Charles Sheppard; 2nd Jean Harley; and most lone hands, Lois Richardson.

**NEW YEARS EVE PARTIES:** These are the same as last year, \$40 a couple upstairs, \$15 a couple downstairs. Tickets are at the bar.

### Legion Auxiliary

By YVONNE GRAHAM  
Herald Special

Thanks go to Trudy Paul, May Lawr and their committee for the wonderful job they did running the Legion Auxiliary Bazaar.

The Branch will be holding the children's Christmas Party at 7 p.m. Thursday, Dec. 8.

Our Christmas meeting on Dec. 15 begins at 7 p.m. and will be followed by a potluck supper and Christmas party.

Following are a list of some of the draw winners from the bazaar:

Penny Draw, Trevor Cash; Hat Draw, M. MacDonald; Sports Draw: 1st E. Wilde; 2nd S. Brunelly; 3rd A. McSimm; Children's Draw: 1st B. Richardson; L. Bottoms Bazaar: 1st C. Taylor; 2nd A. Nicholson; 3rd D. Herrington.

### Landscaping seminar planned

By NANCY BERG  
Ballinafad Correspondent

Paul and Helga Schwarz are looking for people who would be interested in attending a seminar on "Landscaping Your Home" in February or March. If you'd like to attend a workshop (to be held in Ballinafad), give Helga a call at 877-7000.

We're having a clean-up in the old basement at the Community Centre on Wednesday, Dec. 28 at 1 p.m. Bring your brooms and buckets and we'll see if we can't get the place looking a little better than it does now. I know it's during school break, but if the kids can push a broom or wash with a rag, bring them along and we'll drain some of that energy.

Annual elections for the Hall Board at the Community Centre will be held Sunday, Jan. 8 at 2 p.m. The Hall Board at present consists of a chairperson, vice chairperson, secretary, treasurer, maintenance chairperson, finance committee chairperson, fundraising chairperson, and entertainment chairperson. The position of secretary is vacant, and we're also looking for someone who could take over publicity for us, as it seems to have grown into a category by itself as the Community Centre gets more and more activities.

Publicity consists of notifying the papers when we're having a "do," putting out the Ballinafad Newsletter, and doing our newspaper col-

## Ballinafad News

urns. A car and a typewriter are handy, but not essential. Any position requires a commitment to attend approximately one meeting per month, and to be willing to lend a hand at assorted little tasks that come up. Our Ballinafad Community Centre is turning out a profit this year, and I see no reason why it should not continue to do so as long as we can keep up community involvement. If you'd like to give advance notice that you'd like to stand for one of the offices, drop a letter to Murray Clark, Clerk at the Township of Erin in Hillsburgh. Of course you can always surprise us at the meeting. Whatever, please come out on the 6th and let us know that the village still cares about us.

Archie Lawr is ready to string me up by my thumbs (or make me accompany him on one of his morning treks) because I forgot to thank Alec Lulham for the help he gave in constructing our new garbage bin at the Community Centre. I apologize for missing out on that in my talks with Archie, and I promise that every time I use the garbage bin I will say thank you Archie and Alec.

### Authorities crackdown

The Metropolitan Toronto and Region Conservation Authority has increased surveillance of Authority-owned lands during the Christmas season in an effort to stop the illegal operation of all-terrain vehicles and snowmobiles, poaching, and the theft of firewood and Christmas trees.

The Authority owns more than 12,000 hectares of land from Ajax to Mississauga, and from the Lake Ontario shoreline to Highway 9, including conservation areas, waterfront parks, and education centres. All lands are posted.

The Authority's mandate includes the protection and management of the natural environment. Consequently, Authority enforcement of-

ficers, in co-operation with local police forces, will lay charges against people who break Authority regulations.

People convicted of cutting down Christmas trees may be directed by the court to pay a penalty, make restitution to the Authority, report to a probation officer, and perform community services.

For more information, call the Conservation Authority at (416) 661-6600, ext. 218.

**GEORGETOWN SPA & FITNESS CENTRE**  
"EXCLUSIVELY YOURS"  
877-1924

## ANNUAL CHRISTMAS PARTY

SAT., DEC. 10, 1988  
9:00 P.M.

"KENT TOCHER"  
Entertaining In The  
STATION HOUSE LOUNGE

• Door Prize • Spot Dances  
ENTERTAINMENT FRI., DEC. 9th — 8:30 P.M.

EXCHANGE TAVERN  
37 KING STREET  
GEORGETOWN, ONT.

877-3541

ACROSS FROM  
GO STATION



# Christmas at your house?

... make it extra special with a new dining room suite!

 <p><b>BEAUTY OF OAK</b> Round table with "SUNBURST" veneer top and fully detailed ball and claw pedestal base. Opens to 48"x72" (with 24" leaf) 4838-901-1</p> <p>Buffet and hutch with etched glass and Bombay fronts. 4838-466-1 <b>\$1299.</b></p> <p>Solid oak, double press back chairs 4838-448-1 <b>\$149.</b></p>	 <p><b>STONEBRIDGE COLLECTION</b> Master dining suite with a full 40"x60" (78") trestle table and high back spindle chairs. Suite includes table and 4 side chairs. 4838-965-1</p> <p>Side chair 4838-983-2# <b>\$169.</b></p> <p>Arm chair 4838-992-1 <b>\$189.</b></p> <p>Buffet/Hutch 4838-974-1 <b>\$999.</b></p>	 <p><b>CLASSY CONTEMPORARY</b> Pecan veneers and hardwood solids blend perfectly to produce this 5 piece suite that includes a 40"x48" (extended with 1 leaf) parsons table and 4 side chairs. 4838-929-1</p> <p>Side chair 4838-947-2# <b>\$169.</b></p> <p>Arm chair 4838-956-1 <b>\$189.</b></p> <p>Buffet/Hutch 4838-938-1 <b>\$1099.</b></p>
 <p><b>TRADITIONAL ELEGANCE</b> Elegant diamond matched cherry veneer. Suite includes table and 4 side chairs. 4838-199-1</p> <p>Side chair 4838-206-1 <b>\$269.</b></p> <p>Arm chair 4838-215-1 <b>\$299.</b></p>	 <p><b>OAK PARQUET ENHANCED</b> Oak parquet veneer dining suite includes a 42"x60" (78") parsons table, 3 side chairs and 1 arm chair. 4838-279-1</p> <p>Side Chair 4838-297-1 <b>\$149.</b></p> <p>Arm Chair 4838-304-1 <b>\$169.</b></p>	 <p><b>DISTINCTLY TRADITIONAL</b> 3 pce. suite constructed of solid oak and oak veneers 4838-242-1</p> <p>3 pce. suite <b>\$2295.</b></p>

**WE MAKE YOU FEEL RIGHT AT HOMELAND**



**DOWNTOWN GEORGETOWN**  
SINCE 1937  
877-3577

# GOODLET'S

Homeland Furniture and Appliances.

**SALE ENDS DECEMBER 17, 1988**




Make shopping more convenient! Apply for our Homeland Charge Card Today.