

Halton Hills Outlook

Community Calendar

OCTOBER						
S	M	T	W	T	F	S
2	3	4	5	6	7	8
9	10	11	12	13	14	15
16	17	18	19	20	21	22
23	24	25	26	27	28	29
30	31					

OCT. 1—The Credit Valley Artists are holding a Fall Sale, 10 a.m.-5 p.m. at the Bellfontaine Community Hall on Mississauga Road. Admission is \$1.00 each.

OCT. 7—The Acton and Georgetown libraries are presenting *March to the Movies*, 1:00-1:30 p.m., followed by Totem Pole Making, 1:30-2:30 p.m. Register by calling 853-0301 (Acton) or 873-2881 (Georgetown).

Century 21

Realty of Distinction Inc., Realtor
 MEMBER BROKER
 112 MAIN ST. S., GEORGETOWN
 (CORNER OF CHURCH & MAIN)
 873-1881

Local schools are keeping the status quo, despite surprise ruling Pg. 2
 A St. Catharines resident paints a shocking picture of what it's like living next to a quarry landfill Pg. 3

OPEN 10 - 10 DAILY

It's Worth
the Drive
to Acton!



49 EASTERN
AVE.
ACTON
853-1031

The summer drought not only affected crops but it also created a decline in the duck population Pg. 5
 Halton Region will down-size Centennial Manor rather than expand the facility Pg. 6

Fendley Florists

SEND A BASKET OF COLOUR ONLY AUTUMN COULD COLLECT!
 THANKSGIVING, OCTOBER 10, 1988 - CALL TODAY!

NORTHVIEW CENTRE
 211 Guelph St., Georgetown

877-6901

Georgetown bowler Bill Anderson is tuning up for the Skins Game Pg. 8
 A review is done on a controversial book depicting the life of John Lennon Pg. 10

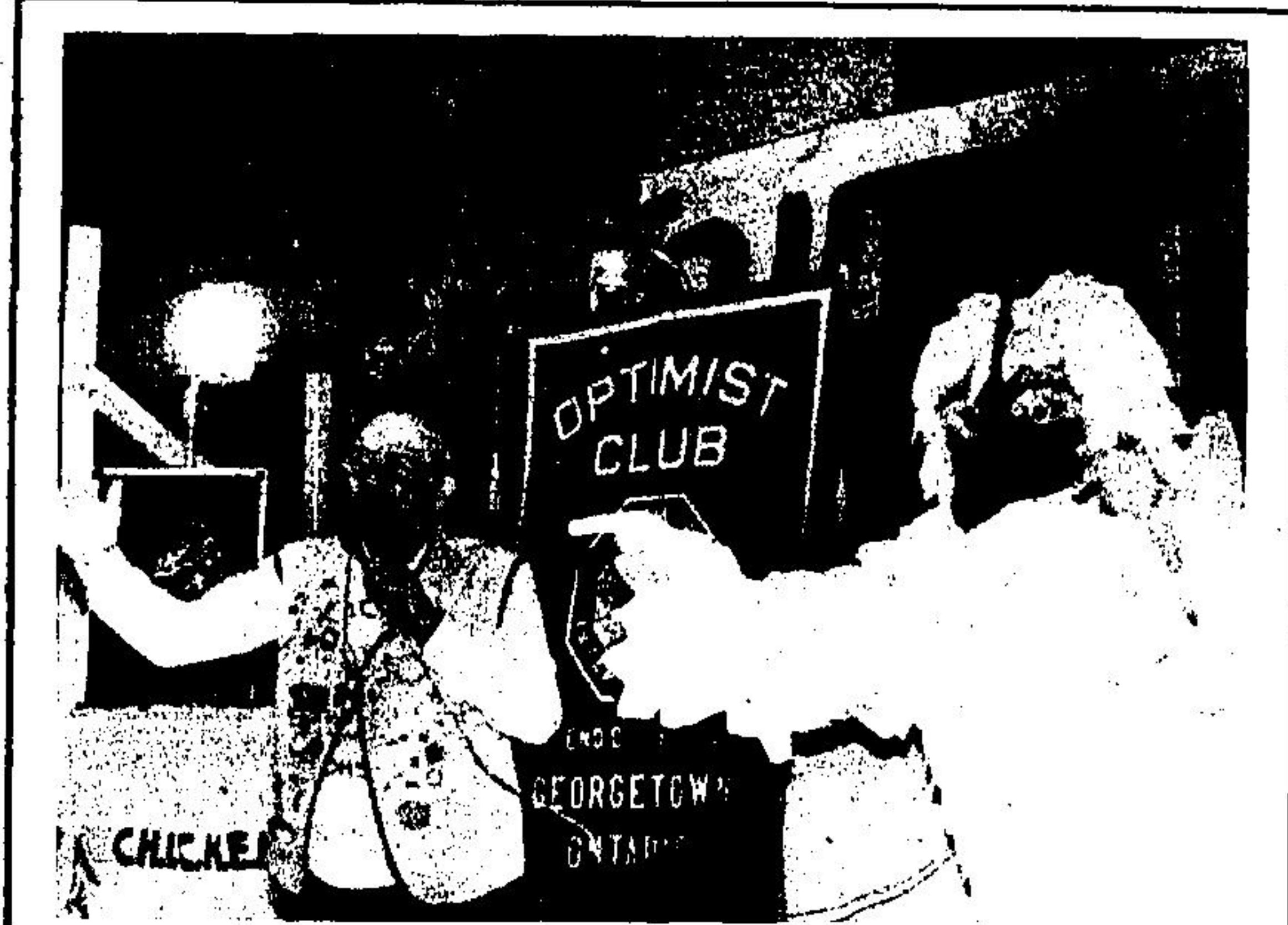
Poppy's
RESTAURANT L.L.B.O.

CORNER OF GUELPH ST. (HWY. 7) & MOUNTAINVIEW RD. S., GEORGETOWN
877-2418
 BANQUET HALL AVAILABLE

Every Fri. & Sat. PRIME RIB \$10.95 <small>Includes Saled Bar</small>	MON.-THURS. 2 FOR 1 THIS WEEK NEW YORK STEAK \$15.95 <small>Includes Saled Bar</small>
--	--

REGULAR FEATURES

Their Outlook Pg. 4
 GDHS Report Pg. 5
 Dr. Gett Pg. 7
 Leisure Lines Pg. 9
 Kids Page Pg. 12
 Comics Pg. 13



CHICKEN Dance

Optimist member Gord Hull and the big CHICKEN sing their CHICKEN song to a full house of elementary students at Georgetown Memorial Arena. Tuesday's CHICKEN (students against drug abuse) opening for September 1988. CHICKEN stands for Cool, Honest, Intelligent, Clear-headed, Keen, Energetic and Not interested in drugs. Members of the Halton Police Force, Mayor Russ Miller, Regional Chairman Pete Pomeroy and television celebrity Dave Hatch attended.

Landfill Study Group

Members walk out on meeting

Members of the Acton quarry landfill study group have walked out bringing the public information process to an abrupt halt.

Led by committee member Barbara Halsall and POWER (Protect Our Water and Environmental Resources) president Ruth French, the committee said the proponents of the landfill, Reclamation Systems Inc. (RSI), have not been following the environmental assessment process.

The walkout took place at the Sept. 28 meeting at the Milton's Lion's Club Hall.

Committee members said the minutes of previous meetings were taking far too long to be sent out and scrutinized so they voted that all previous meetings for which the

minute have not been approved (the last five) be invalidated.

"While we, the members of this proposed Acton quarry presubmission consultation participated in good faith, we have come to understand that this particular process does not conform with the policy of the Ministry of the Environment under the Environmental Assessment Act," a motion passed by the committee said. "Therefore, until this proposal is designated under the Environmental Assessment Act, we withdraw our members from this group immediately after the adjournment of this meeting."

Group members then passed a motion to adjourn the meeting.

Eco Logic President Dr. Douglas Hallett who is conducting the public

information process, never made the presentation on dust and noise that was scheduled.

The walkout effectively ends the pre-submission consultation process by RSI, a process demanded by the environmental assessment act. There were two meetings of the committee group remaining before the final documents are submitted by RSI to the Ministry of the Environment in the late fall.

Dr. Hallett, said the public consultation process will continue in a different form, after the final documents are filled.

But the long process towards gaining final approval for the landfill site has not been delayed as a result of the walkout, said Dr. Hallett.

G.S.S. OFFICE SUPPLIES
 877-2282 846-6947

HOURS: Monday-Friday 9:00 a.m. - 5:30 p.m.
 Saturday 9:30 a.m. - 1:00 p.m.

INTRODUCING THE NEW LASER / FAX STAND

- Model PS 1850
- Compact Size - 21" W x 18 1/2" D
- Comfortable Height - 32"
- Roll Out Surface For Telephone Numbers And Log-Book
- 16 Slots Ideal For Keeping Facsimile Organized
- Storage For Paper And Toner
- Supports Most Laser Models
- Roll Out Surface For Manuals, User Instructions, Etc.
- Locking Compartment For Expensive Font Cartridges
- Slots For Different Paper Types
- Great For Organizing Network Printouts To Multiple Users
- Colours: Grey, Almond, Lt. Oak, Med. Oak and Walnut

91-1850 (PS-1850) List \$240.00

SPECIAL **\$181⁰⁰**

SALE ENDS OCTOBER 31, 1988